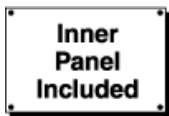


# Type 12 Mild Steel Wallmount Enclosure 1418 Series

## Continuous Hinge Door with Clamps

[Home](#) / [Electrical](#) / [Industrial](#) / [Wallmount Enclosures](#)[English](#) | [Français](#)

[+/-] Zoom



### Application

- Designed to house electrical, electronic, hydraulic or pneumatic controls and instruments.
- Provides a degree of protection from falling dirt, dust, oil and water.

### Standards

- UL 508 Type 12 and 13
- CSA Type 12 and 13
- Complies with
  - NEMA Type 12 and 13
  - JIC EGP-1-1967 unless marked
  - IEC 60529, IP54

### Construction

- Formed 14 gauge steel bodies and doors.
- Smooth, continuously welded seams without knockouts, cutouts or holes.
- Door and body stiffeners are provided in the larger enclosures for extra rigidity. Welded brackets provide for enclosure mounting.
- Formed lip on door and enclosure exclude flowing liquids and contaminants.
- Continuously hinged door may be removed by pulling the hinge pin.
- Door is secured with easily operated stainless steel clamps.
- Provision for padlocking.
- Oil resistant gaskets are permanently secured.
- A removable 12 gauge inner panel is included.
- Collar studs are provided for mounting inner panels.
- A bonding stud is provided on the door and a grounding stud is provided in the enclosure.
- A literature pocket is provided for the inside of the door.

### Finish

- Cover and enclosure are finished in recoatable smooth ANSI 61 gray powder coating on the outside, with white powder coating on the inside.
- Removable inner panel is finished in white powder coating.

### Accessories

[Inner Panels](#)[Cooling Products](#)[Blowers and Fans](#)

#### PRODUCT RESOURCES

 [Specification Sheet](#) [Print Page](#) [Part Table](#)



[Ventilation](#)



[Door Clamping Hardware](#)



[Door Stop Kit](#)



[Drip Shield Kit](#)



[Enclosure Stabilizers](#)



[Filtered Fans](#)



[Floor Stand Kit](#)



[Gland Plates](#)



[Heaters](#)



[Lock kit](#)



[Type 1 Louvered Ventilating Plates](#)



[Wallmount Quick Release Clamp](#)



[Swing Panel Kit](#)



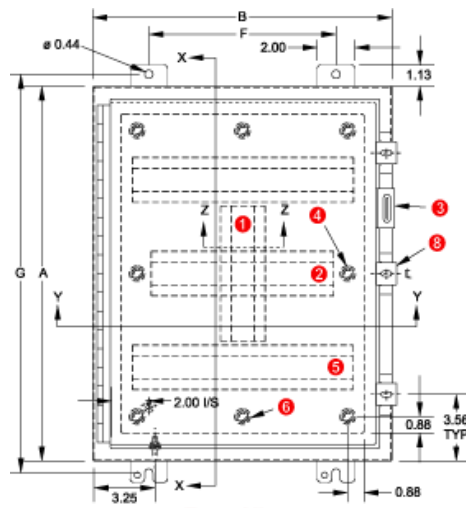
[Terminal Kits](#)



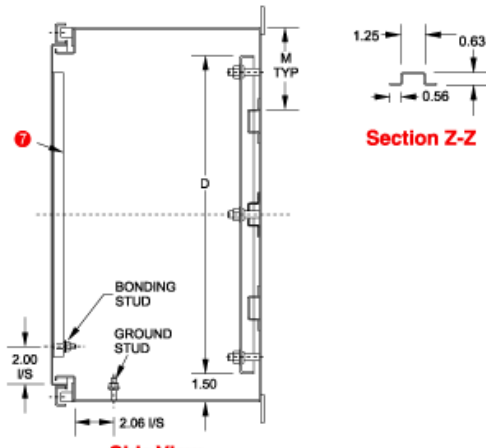
[Temperature Controls](#)



[Window Kits](#)

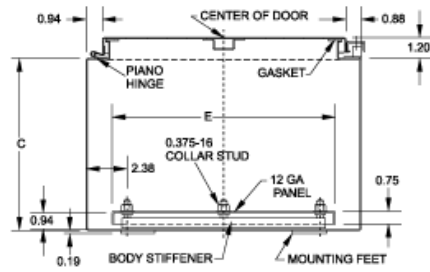


**Front View**



**Side View**

**Section Z-Z**



**Bottom View**

- ① Vertical stiffener required on KK, M, MR and LL only.
- ② Omit center body stiffener if A is less than 41".
- ③ Padlocking hasp and staple.
- ④ Omit 2 middle studs if A is less than 31".
- ⑤ Omit body stiffeners if A or B is less than 29".
- ⑥ Omit 2 middle studs if B is less than 31".
- ⑦ Omit door stiffener if A or B is less than 31" except if AxB is 42"x30", 48"x30" or 72"x30".
- ⑧ Omit if A is less than 48".

Click part number for details (e.g., CAD files, assembly instructions)

Units shown: **inch**. Switch units to: [mm](#)

Part No.	Panel Size					Centers		Ship Wt. (lbs)
	A	B	C	D	E	F	G	
<a href="#">1418A6</a>	12.00	24.00	6.00	9.00	21.00	18.00	13.25	34
<a href="#">1418B6</a>	16.00	12.00	6.00	13.00	9.00	9.50	17.25	26
<a href="#">1418G6</a>	16.00	16.00	6.00	13.00	13.00	10.00	17.25	32
<a href="#">1418CR6</a>	16.00	20.00	6.00	13.00	17.00	14.00	17.25	38
<a href="#">1418CA6</a>	20.00	12.00	6.00	17.00	9.00	9.50	21.25	32
<a href="#">1418C6</a>	20.00	16.00	6.00	17.00	13.00	10.00	21.25	38
<a href="#">1418D6</a>	20.00	20.00	6.00	17.00	17.00	14.00	21.25	48
<a href="#">1418ER6</a>	20.00	24.00	6.00	17.00	21.00	18.00	21.25	54
<a href="#">1418AR6</a>	24.00	12.00	6.00	21.00	9.00	9.50	25.25	36
<a href="#">1418H6</a>	24.00	16.00	6.00	21.00	13.00	10.00	25.25	46
<a href="#">1418E6</a>	24.00	20.00	6.00	21.00	17.00	14.00	25.25	54
<a href="#">1418J6</a>	24.00	24.00	6.00	21.00	21.00	18.00	25.25	62
<a href="#">1418FG6</a>	30.00	16.00	6.00	27.00	13.00	10.00	31.25	56
<a href="#">1418F6</a>	30.00	20.00	6.00	27.00	17.00	14.00	31.25	66
<a href="#">1418K6</a>	30.00	24.00	6.00	27.00	21.00	18.00	31.25	76
<a href="#">1418L6</a>	36.00	24.00	6.00	33.00	21.00	18.00	37.25	91
<a href="#">1418M6</a>	36.00	30.00	6.00	33.00	27.00	24.00	37.25	114
<a href="#">1418A8</a>	12.00	24.00	8.00	9.00	21.00	18.00	13.25	38
<a href="#">1418B8</a>	16.00	12.00	8.00	13.00	9.00	9.50	17.25	28
<a href="#">1418G8</a>	16.00	16.00	8.00	13.00	13.00	10.00	17.25	34
<a href="#">1418CR8</a>	16.00	20.00	8.00	13.00	17.00	14.00	17.25	43
<a href="#">1418CA8</a>	20.00	12.00	8.00	17.00	9.00	9.50	21.25	35
<a href="#">1418C8</a>	20.00	16.00	8.00	17.00	13.00	10.00	21.25	40
<a href="#">1418D8</a>	20.00	20.00	8.00	17.00	17.00	14.00	21.25	48
<a href="#">1418ER8</a>	20.00	24.00	8.00	17.00	21.00	18.00	21.25	61
<a href="#">1418AR8</a>	24.00	12.00	8.00	21.00	9.00	9.50	25.25	40

<u>1418H8</u>	24.00	16.00	8.00	21.00	13.00	10.00	25.25	50
<u>1418E8</u>	24.00	20.00	8.00	21.00	17.00	14.00	25.25	58
<u>1418J8</u>	24.00	24.00	8.00	21.00	21.00	18.00	25.25	68
<u>1418KR8</u>	24.00	30.00	8.00	21.00	27.00	24.00	25.25	82
<u>1418KA8</u>	30.00	12.00	8.00	27.00	9.00	9.50	31.25	50
<u>1418KG8</u>	30.00	16.00	8.00	27.00	13.00	10.00	31.25	60
<u>1418F8</u>	30.00	20.00	8.00	27.00	17.00	14.00	31.25	70
<u>1418K8</u>	30.00	24.00	8.00	27.00	21.00	18.00	31.25	82
<u>1418KK8</u>	30.00	30.00	8.00	27.00	27.00	24.00	31.25	102
<u>1418MR8</u>	30.00	36.00	8.00	27.00	33.00	30.00	31.25	124
<u>1418L8</u>	36.00	24.00	8.00	33.00	21.00	18.00	37.25	96
<u>1418M8</u>	36.00	30.00	8.00	33.00	27.00	24.00	37.25	120
<u>1418LL8</u>	36.00	36.00	8.00	33.00	33.00	30.00	37.25	142
<u>1418N8</u>	42.00	24.00	8.00	39.00	21.00	18.00	43.25	110
<u>1418O8</u>	42.00	30.00	8.00	39.00	27.00	24.00	43.25	132
<u>1418P8</u>	42.00	36.00	8.00	39.00	33.00	30.00	43.25	182
<u>1418Q8</u>	48.00	24.00	8.00	45.00	21.00	18.00	49.25	122
<u>1418R8</u>	48.00	30.00	8.00	45.00	27.00	24.00	49.25	173
<u>1418S8</u>	48.00	36.00	8.00	45.00	33.00	30.00	49.25	201
<u>1418T8</u>	60.00	36.00	8.00	57.00	33.00	30.00	61.25	246
<u>1418B10</u>	16.00	12.00	10.00	13.00	9.00	9.50	17.25	30
<u>1418C10</u>	20.00	16.00	10.00	17.00	13.00	10.00	21.25	44
<u>1418D10</u>	20.00	20.00	10.00	17.00	17.00	14.00	21.25	52
<u>1418AR10</u>	24.00	12.00	10.00	21.00	9.00	9.50	25.25	42
<u>1418E10</u>	24.00	20.00	10.00	21.00	17.00	14.00	25.25	64
<u>1418J10</u>	24.00	24.00	10.00	21.00	21.00	18.00	25.25	73
<u>1418F10</u>	30.00	20.00	10.00	27.00	17.00	14.00	31.25	76
<u>1418K10</u>	30.00	24.00	10.00	27.00	21.00	18.00	31.25	86
<u>1418L10</u>	36.00	24.00	10.00	33.00	21.00	18.00	37.25	105
<u>1418M10</u>	36.00	30.00	10.00	33.00	27.00	24.00	37.25	124
<u>1418O10</u>	42.00	30.00	10.00	39.00	27.00	24.00	43.25	140
<u>1418P10</u>	42.00	36.00	10.00	39.00	33.00	30.00	43.25	192
<u>1418R10</u>	48.00	30.00	10.00	45.00	27.00	24.00	49.25	162
<u>1418S10</u>	48.00	36.00	10.00	45.00	33.00	30.00	49.25	208
<u>1418T10</u>	60.00	36.00	10.00	57.00	33.00	30.00	61.25	258
<u>1418C12</u>	20.00	16.00	12.00	17.00	13.00	10.00	21.25	48
<u>1418E12</u>	24.00	20.00	12.00	21.00	17.00	14.00	25.25	68
<u>1418J12</u>	24.00	24.00	12.00	21.00	21.00	18.00	25.25	76
<u>1418K12</u>	30.00	24.00	12.00	27.00	21.00	18.00	31.25	90
<u>1418KK12</u>	30.00	30.00	12.00	27.00	27.00	24.00	31.25	114
<u>1418L12</u>	36.00	24.00	12.00	33.00	21.00	18.00	37.25	108
<u>1418M12</u>	36.00	30.00	12.00	33.00	27.00	24.00	37.25	132
<u>1418LL12</u>	36.00	36.00	12.00	33.00	33.00	30.00	37.25	156
<u>1418O12</u>	42.00	30.00	12.00	39.00	27.00	24.00	43.25	150
<u>1418P12</u>	42.00	36.00	12.00	39.00	33.00	30.00	43.25	198
<u>1418S12</u>	48.00	36.00	12.00	45.00	33.00	30.00	49.25	222
<u>1418T12</u>	60.00	36.00	12.00	57.00	33.00	30.00	61.25	264
<u>1418U12</u>	72.00	30.00	12.00	69.00	27.00	24.00	73.25	272
<u>1418V12</u>	72.00	36.00	12.00	69.00	33.00	30.00	73.25	312
<u>1418J16</u>	24.00	24.00	16.00	21.00	21.00	18.00	25.25	86
<u>1418K16</u>	30.00	24.00	16.00	27.00	21.00	18.00	31.25	102
<u>1418M16</u>	36.00	30.00	16.00	33.00	27.00	24.00	37.25	140
<u>1418P16</u>	42.00	36.00	16.00	39.00	33.00	30.00	43.25	214
<u>1418S16</u>	48.00	36.00	16.00	45.00	33.00	30.00	49.25	238

<a href="#">1418T16</a>	60.00	36.00	16.00	57.00	33.00	30.00	61.25	290
<a href="#">1418U16</a>	72.00	30.00	16.00	69.00	27.00	24.00	73.25	290
<a href="#">1418K20</a>	30.00	24.00	20.00	27.00	21.00	18.00	31.25	112
<a href="#">1418M20</a>	36.00	30.00	20.00	33.00	27.00	24.00	37.25	152
<a href="#">1418S20</a>	48.00	36.00	20.00	45.00	33.00	30.00	49.25	256
<a href="#">1418T20</a>	60.00	36.00	20.00	57.00	33.00	30.00	61.25	300
<a href="#">1418U20</a>	72.00	30.00	20.00	69.00	27.00	24.00	73.25	308
<a href="#">1418K24</a>	30.00	24.00	24.00	27.00	21.00	18.00	31.25	142
<a href="#">1418U24</a>	72.00	30.00	24.00	69.00	27.00	24.00	73.25	332

Does not meet JIC requirements

**[Need Assistance? Contact Us.](#)**

*Data subject to change without notice.*