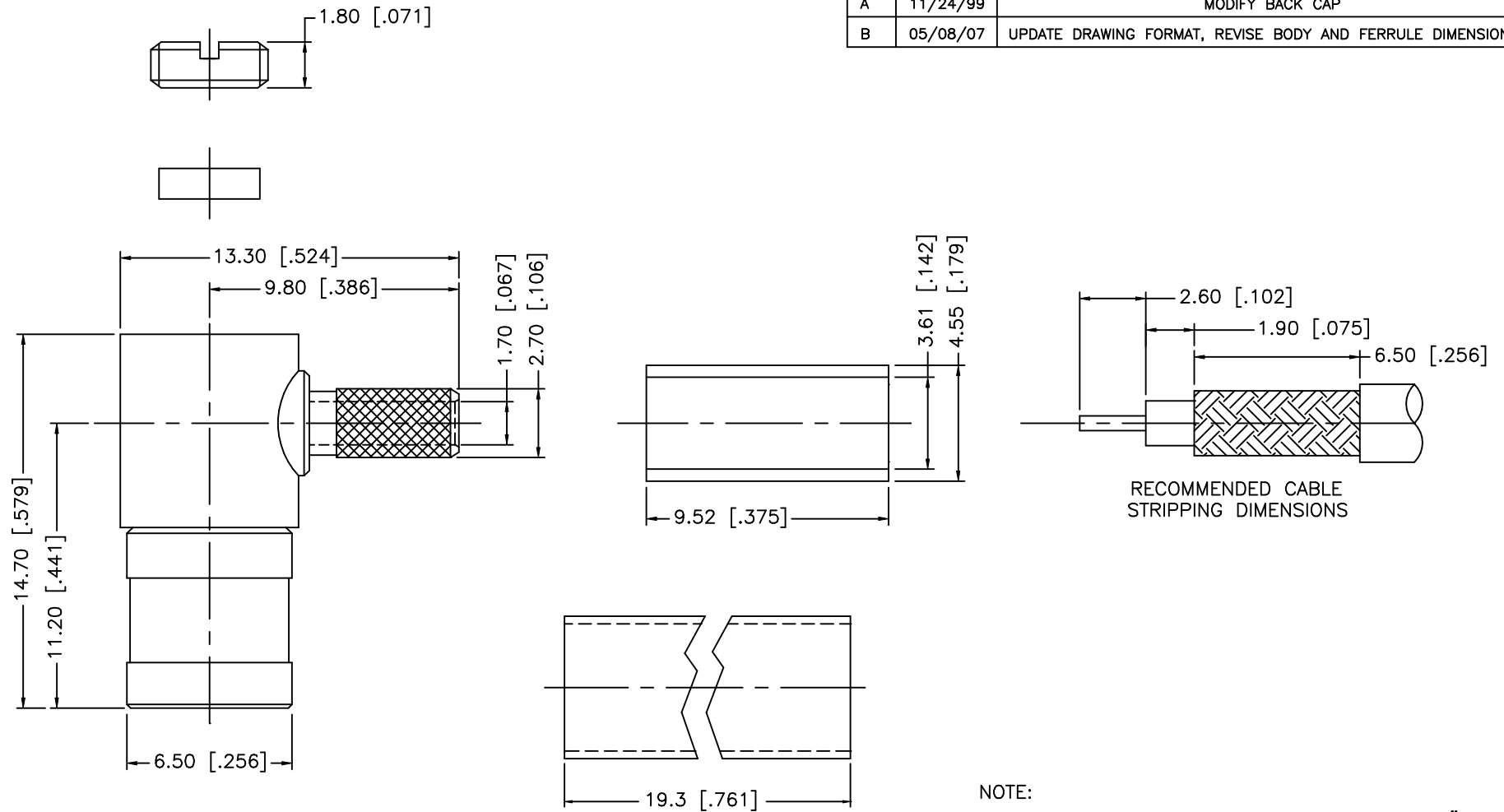


| REV. | DATE | DESCRIPTION |
|------|----------|---|
| A | 11/24/99 | MODIFY BACK CAP |
| B | 05/08/07 | UPDATE DRAWING FORMAT, REVISE BODY AND FERRULE DIMENSIONS |



NOTE:

1. CRIMPED FERRULE HEX CRIMP SIZE .151"
2. CONTACT PIN TO SOLDER.

| | | | | UNLESS OTHERWISE SPECIFIED DIMENSIONS ARE IN MILLIMETERS. DIMENSIONS IN [] ARE IN INCHES AND FOR CUSTOMER REFERENCE ONLY. | APPROVALS | DATE | Amphenol Connex | | | | | |
|---|------------------|-------------|---------|--|--|--------|------------------------|---------------------------|--------|----------|----------|---|
| 8 | | | | | DRAWN | G.R.S. | | | | | 05/08/07 | PART DESCRIPTION SMB R/A CRIMP PLUG (FOR RG-316U/D CABLE) |
| 7 | | | | | CHECKED | | | PART NO. 142188 | | | | |
| 6 | HEAT SHRINK TUBE | | | 1 | ISSUED | | | | | | | DWG. NO. 142188.DWG |
| 5 | COVER | BRASS | NICKEL | 1 | SHEET | 1 OF 1 | | REV. B | SIZE A | SCALE NA | | |
| 4 | FERRULE | COPPER | NICKEL | 1 | UNLESS OTHERWISE SPECIFIED TOLERANCES FOR MILLIMETERS ARE: 0.5 - 8mm ± 0.20mm 8 - 30mm ± 0.40mm 30 - 120mm ± 0.50mm | | | | | | | |
| 3 | CONTACT PIN | BER. COPPER | GOLD | 1 | UNLESS OTHERWISE SPECIFIED TOLERANCES FOR INCHES ARE: .020 - .315 = ± 0.007" .315 - 1.180 = ± 0.015" 1.180 - 4.724 = ± 0.020" | | | | | | | |
| 2 | INSULATOR | TEFLON | NATURAL | 1 | DO NOT SCALE DRAWING | | | | | | | |
| 1 | BODY | BRASS | NICKEL | 1 | CAD FILE C:/142/142188.DWG | | | | | | | |

Mouser Electronics

Authorized Distributor

Click to View Pricing, Inventory, Delivery & Lifecycle Information:

[Amphenol:](#)

[142188](#)