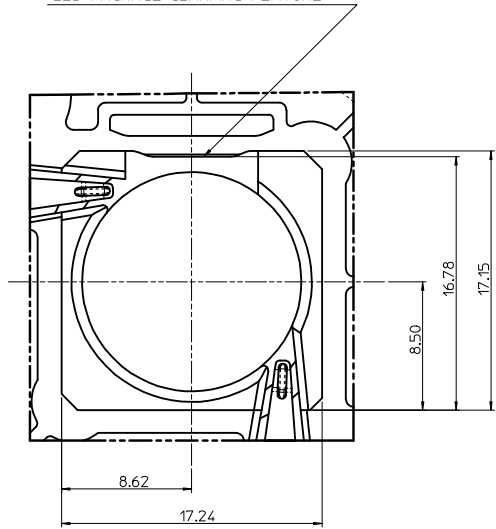
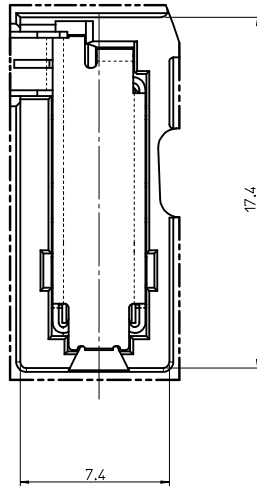


LED PACKAGE CLAMPING FEATURE

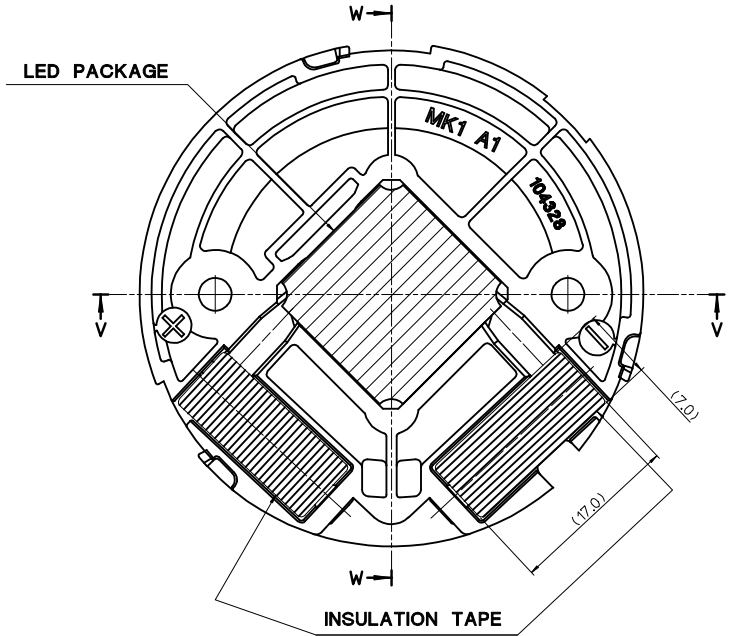


DETAIL "A"
(S=3:1)

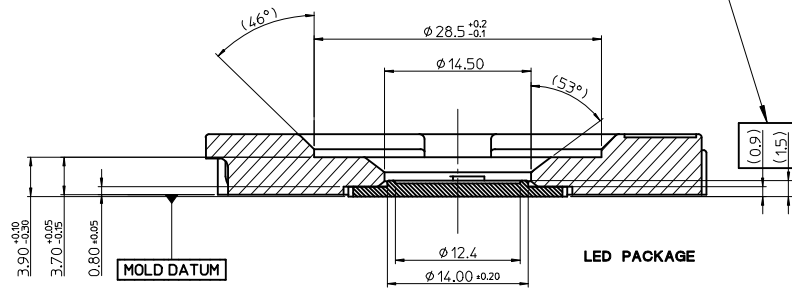


DETAIL "B"
(S=4:1)

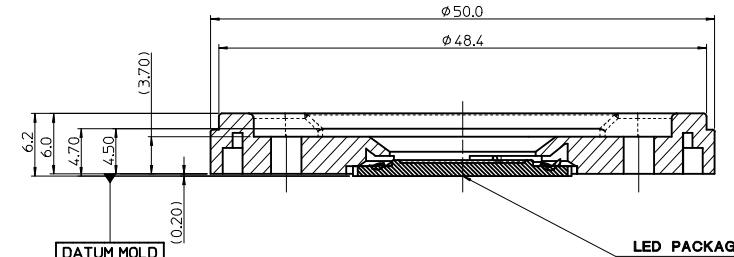
ILLUSTRATION OF HOLDER WITH LED PACKAGE ATTACHED
BOTTOM VIEW (REFERENCE)



RECOMMENDED LED PACKAGE THICKNESS



Section W-W



SECTION V-V

RELEASED EC NO: KOR2015-0147 DRWN: SCHONG03 CHKD: SHCHU APPR: YSK1M02	2015/06/16 2015/06/16 2015/06/18	DESCRIPTION A	QUALITY SYMBOLS	GENERAL TOLERANCES (UNLESS SPECIFIED)	DIMENSION STYLE	SCALE	DESIGN UNITS	THIRD ANGLE PROJECTION
			$\nabla = 0$ $\nabla = 0$	mm INCH 4 PLACES ± --- ± --- 3 PLACES ± --- ± --- 2 PLACES ± 0.15 ± --- 1 PLACE ± 0.25 ± --- 0 PLACE ± --- ± ---	MM ONLY	2:1	METRIC	
			ANGULAR ± 1 ° DRAFT WHERE APPLICABLE MUST REMAIN WITHIN DIMENSIONS	DRAWN BY: SCHONG03 CHECKED BY: SHCHU APPROVED BY: YSK1M02 MATERIAL NO: 1043280210	DATE: 2015/06/16 DATE: 2015/06/16 DATE: 2015/06/18	TITLE	14.5MM DIAMETER LED HOLDER HEADER ASS'Y	
						DOCUMENT NO: SD-104328-001 SHEET NO: 2 OF 2		

molex