



Quality Products. Service Excellence.

## Type 4X, 6P Polycarbonate & General Purpose ABS Enclosures 1555

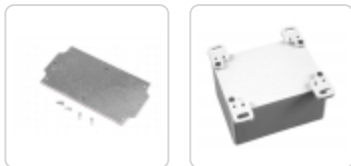
Series

Watertight, Styled Lid, UL Listed Options



### Key Features

- Ideally suited for mounting printed circuit boards or DIN rail mounted components (see photo features below for details).
- “Styled” lid version has three main advantages over our flat lid (1554 series) - also see photo features below:
  - Smooth recessed surface on lid for a membrane keypad or label
  - Standoffs molded in the interior of the lid (except for size “B”). Designed for #6 self tapping screws
  - More modern “styled” look vs. our traditional flat lid (1554 series)
- ABS Versions are molded from general purpose material which carries a flammability rating of UL94-HB. For indoor use.
- Polycarbonate versions are UV stabilized for outdoor use. Gray polycarb carries a UL94-5VA rating.
- Polycarbonate versions are UL 508A listed (File # E65324).
- Enclosure color is a light gray (RAL 7035).
- Gasketed lid with two piece “tongue & groove” construction provides protection against access of oil, dust and water.
- Replaceable gasket is one piece made from high temperature, U.L. listed silicone. Supplied loose inside the enclosure (not pre-installed).
- Polycarb versions are designed to meet NEMA Type 4, 4X, 6, 6P, 12 & 13 ratings which meet and exceed IP ratings up to and including IP68. (Except 1554/55 V size which is 4,4X only)
- ABS Plastic versions are designed to meet IP66.
- Lid is secured with included M4 stainless steel machine screws which are threaded into corrosion resistant bushings for repetitive assembly & disassembly. All hardware is designed to avoid corrosion caused by harsh environments over time.
- Lid screws are self captivating (lid holes are threaded with the first installation of lid screws).
- Internal features are maximized for mounting options and vary with size:
- Internal DIN rail mounting tabs molded into most models, except sizes “C” and “D”.
- Threaded (M3) integral brass inserts and/or standoffs (for #6 self tapping screws) for P.C. board or inner panel mounting in all but the smallest size (“B”).
- Vertical P.C. card guides (for 1.5 mm thick P.C. boards) are molded in all but the smallest size (“B”).



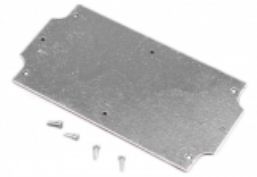
### Photo Features:



Styled lid offers a modern look and a smooth recess perfect for membrane keypads or labels



Standoffs molded in the interior of the lid (except for size "B"). Designed for #6 self tapping screws

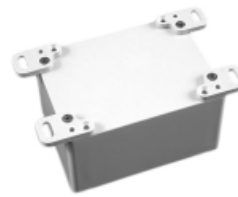
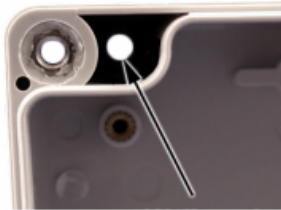


Galvanized steel inner panels are available (refer to table below).

Wall-mounting holes are located outside of the gasket channel

Same wall mounting holes can be used to install an accessory foot kit, **1554FT**

Internal mounting posts can be used to mount accessory inner panels, PC boards, or DIN rails (inner panel shown)



### Accessories

- Inner Panels
- Pole Mount Kit
- Breather Kit
- Liquid-Tight, Strain Relief Cordgrips
- Replacement Gaskets
- Pressure Compensation Plug
- Small Rainproof Ventilator
- Hole Plugs

### Part Numbers

ABS	Polycarbonate (UL Listed)									Replacement
Gray Lid	Gray Lid	Qty of Lid Screws	Length	Width	Total Height	Inner Panel	Foot Kit	Replacement Gasket	Lid Screws (50-pack)	
1555BGY	1555B2GY	4	2.60	2.60	1.60	1554BPL	1554FT	1554BGASKET	SC576-50	
1555EGY	1555E2GY	4	3.50	3.50	2.40	1554EPL	1554FT	1554EGASKET	SC576-50	
1555EEGY	1555EE2GY	4	3.50	3.50	3.50	1554EPL	1554FT	1554EGASKET	SC576-50	
1555LGY	1555L2GY	4	4.13	4.13	2.36	1554LPL	1554FT	1554LGASKET	SC576-50	
1555LAGY	1555LA2GY	4	4.13	4.13	3.54	1554LPL	1554FT	1554LGASKET	SC576-50	
1555CGY	1555C2GY	4	4.70	2.60	1.60	1554CPL	1554FT	1554CGASKET	SC576-50	
1555DGY	1555D2GY	4	4.70	2.60	2.40	1554CPL	1554FT	1554CGASKET	SC576-50	
1555FGY	1555F2GY	4	4.70	3.50	2.40	1554FPL	1554FT	1554FGASKET	SC576-50	
1555GGY	1555G2GY	4	4.70	3.50	3.15	1554FPL	1554FT	1554FGASKET	SC576-50	
1555NGY	1555N2GY	4	4.70	4.70	2.40	1554NPL	1554FT	1554NGASKET	SC576-50	
1555PGY	1555P2GY	4	4.70	4.70	3.50	1554NPL	1554FT	1554NGASKET	SC576-50	
1555QGY	1555Q2GY	4	5.51	5.51	2.36	1554QPL	1554FT	1554QGASKET	SC576-50	
1555QAGY	1555QA2GY	4	5.51	5.51	3.54	1554QPL	1554FT	1554QGASKET	SC576-50	
1555JLGY	1555JL2GY	4	6.30	3.50	1.80	1554JPL	1554FT	1554JGASKET	SC576-50	
1555JGY	1555J2GY	4	6.30	3.50	2.40	1554JPL	1554FT	1554JGASKET	SC576-50	
1555KGY	1555K2GY	4	6.30	3.50	3.50	1554JPL	1554FT	1554JGASKET	SC576-50	
1555RGY	1555R2GY	4	6.30	6.30	2.40	1554RPL	1554FT	1554RGASKET	SC576-50	

ABS Gray Lid	Polycarbonate (UL Listed)		Qty of Lid Screws	Length	Width	Total Height	Inner Panel	Foot Kit	Replacement Gasket	Replacement
	Gray Lid	Gray Lid								Lid Screws (50-pack)
1555SGY	1555S2GY		4	6.30	6.30	3.50	1554RPL	1554FT	1554RGASKET	SC576-50
1555HLGY	1555HL2GY		4	7.10	4.70	1.80	1554HPL	1554FT	1554HGASKET	SC576-50
1555HGY	1555H2GY		4	7.10	4.70	2.40	1554HPL	1554FT	1554HGASKET	SC576-50
1555TGY	1555T2GY		4	7.10	4.70	3.50	1554HPL	1554FT	1554HGASKET	SC576-50
1555WGY	1555W2GY		4	7.10	7.10	2.36	1554WPL	1554FT	1554WGASKET	SC576-50
1555WAGY	1555WA2GY		4	7.10	7.10	3.54	1554WPL	1554FT	1554WGASKET	SC576-50
1555UGY	1555U2GY		4	7.90	4.70	3.50	1554UPL	1554FT	1554UGASKET	SC576-50
1555VGY	1555V2GY		4	9.40	6.30	3.50	1554VPL	1554FT	1554VGASKET	SC583-50
1555VALGY	1555VAL2GY		6	9.40	6.30	2.36	1554VAPL	1554FT	1554VAGASKET	SC583-50
1555VAGY	1555VA2GY		6	9.40	6.30	3.50	1554VAPL	1554FT	1554VAGASKET	SC583-50
1555VBGY	1555VB2GY		6	9.40	6.30	4.70	1554VAPL	1554FT	1554VAGASKET	SC583-50
1555XGY	1555X2GY		6	11.81	7.87	3.54	1554XPL	1554FT-XY	1554XGASKET	SC583-50
1555XAGY	1555XA2GY		6	11.81	7.87	4.72	1554XPL	1554FT-XY	1554XGASKET	SC583-50
1555YGY	1555Y2GY		6	11.81	9.45	3.74	1554YPL	1554FT-XY	1554YGASKET	SC583-50
1555YAGY	1555YA2GY		6	11.81	9.45	4.72	1554YPL	1554FT-XY	1554YGASKET	SC583-50

*Data subject to change without notice*

© 2021. Hammond Manufacturing Ltd. All rights reserved.

# Mouser Electronics

Authorized Distributor

Click to View Pricing, Inventory, Delivery & Lifecycle Information:

## Hammond:

[1555E2GY](#) [1555JGY](#) [1555NGY](#) [1555S2GY](#) [1555FGY](#) [1555SGY](#) [1555GGY](#) [1555D2GY](#) [1555V2GY](#) [1555F2GY](#)  
[1555J2GY](#) [1555EGY](#) [1555K2GY](#) [1555B2GY](#) [1555T2GY](#) [1555KGY](#) [1555TGY](#) [1555R2GY](#) [1555DGY](#) [1555PGY](#)  
[1555G2GY](#) [1555CGY](#) [1555BGY](#) [1555RGY](#) [1555P2GY](#) [1555N2GY](#) [1555HGY](#) [1555C2GY](#) [1555H2GY](#) [1555U2GY](#)  
[1555UGY](#) [1555VGY](#) [1555VA2GY](#) [1555VB2GY](#) [1555EE2GY](#) [1555EEGY](#) [1555LGY](#) [1555WAGY](#) [1555QAGY](#)  
[1555WGY](#) [1555LAGY](#) [1555LA2GY](#) [1555Q2GY](#) [1555QA2GY](#) [1555WA2GY](#) [1555QGY](#) [1555W2GY](#) [1555L2GY](#)  
[1555VAGY](#) [1555X2GY](#) [1555XA2GY](#) [1555XAGY](#) [1555XGY](#) [1555Y2GY](#) [1555YA2GY](#) [1555YAGY](#) [1555YGY](#)  
[1555VBGY](#) [1555HL2GY](#) [1555HLGY](#) [1555JL2GY](#) [1555JLGY](#) [1555VAL2GY](#) [1555VALGY](#)