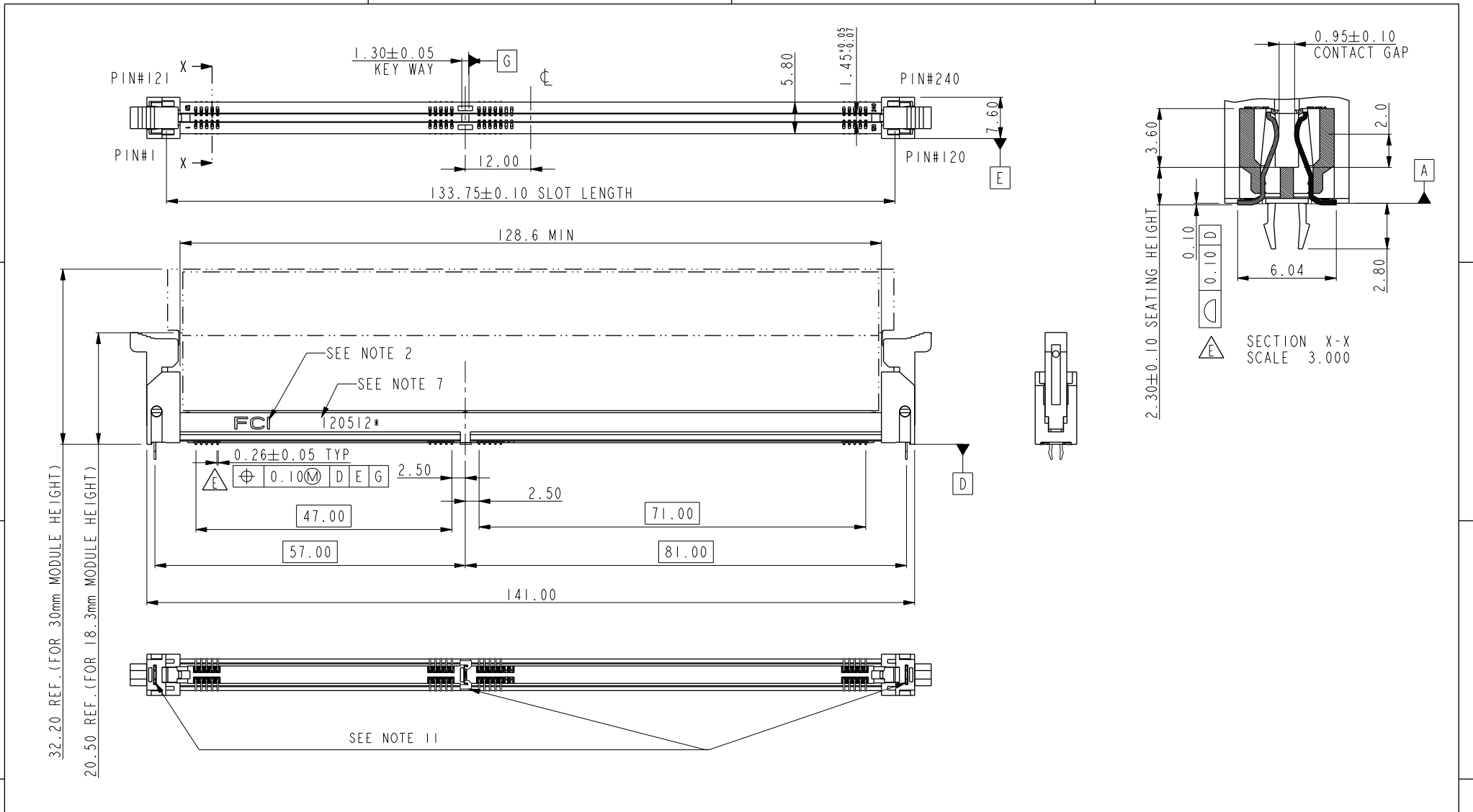




Copyright FCI.

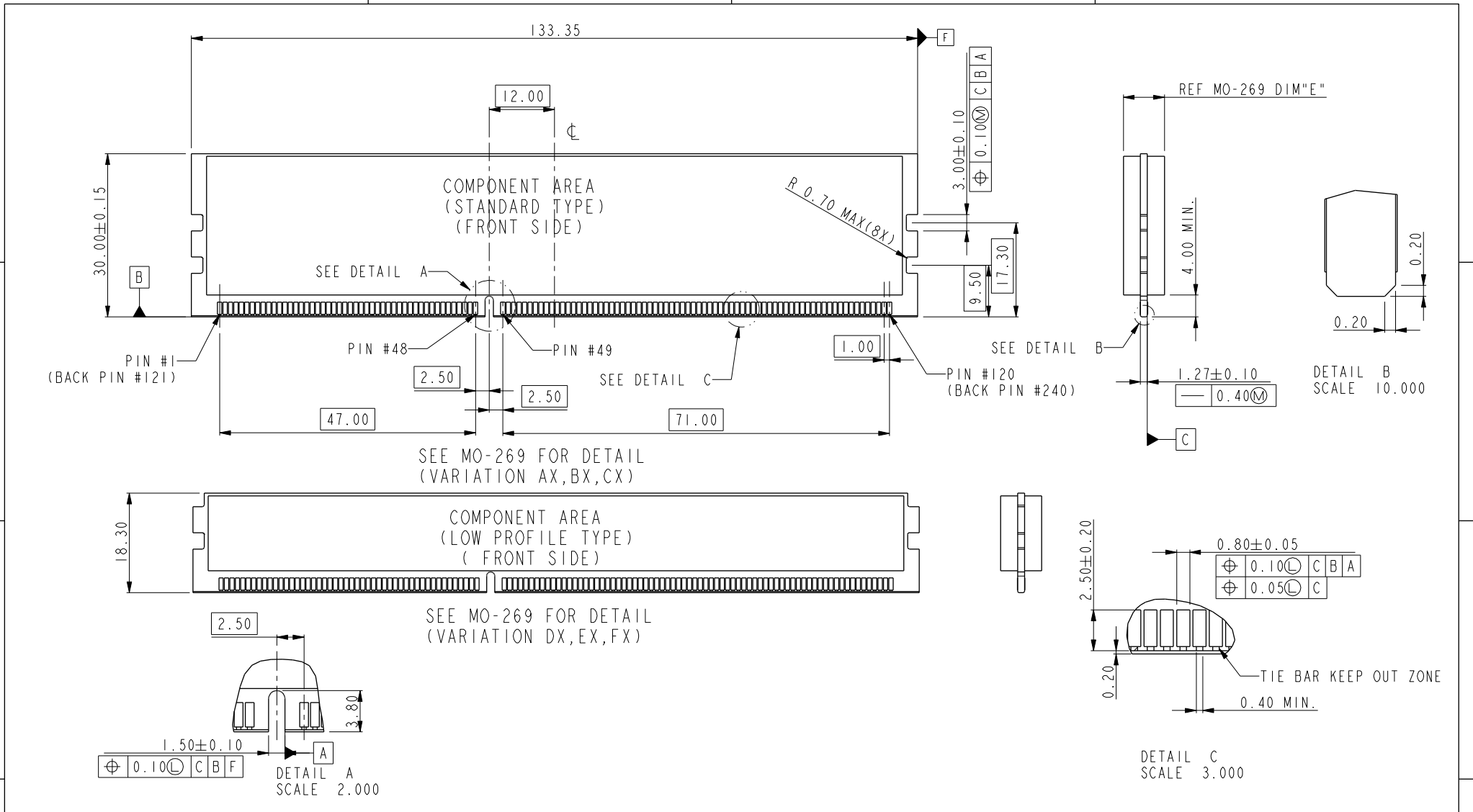


spec ref	*	dr	Rick Bian	2010/07/03	projection	MM	size	A4	scale	1.000
tolerance std	TOLERANCES UNLESS OTHERWISE SPECIFIED	eng	Eric Jiang	2014/07/31				ecn no	ELX-DG-18366-1	
		chr	Jian Huang	2014/08/04					rel level	Released
surface	✓	appr	Pei-Ming Zheng	2014/08/04	product family	product family	rel level	Released		
	linear	0.X	±0.5		title DDR III SMT SOCKET ASS'Y (WITH LCP HOUSING)	dwg no 10104389	rev E			
		0.XX	±0.30							
		0.XXX	±0.15							
	angular	0°	±2°	www.fci.com	cat. no.	*	Product - Customer Drw		sheet 1 of 4	

Pre/E File - REV C - 2009-06-09



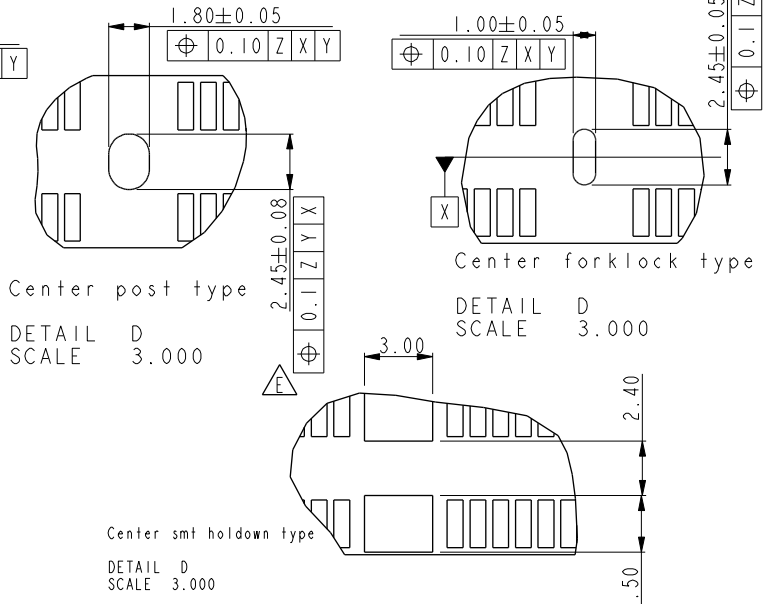
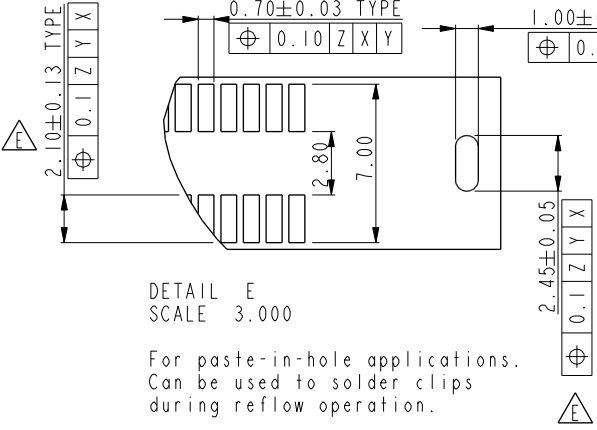
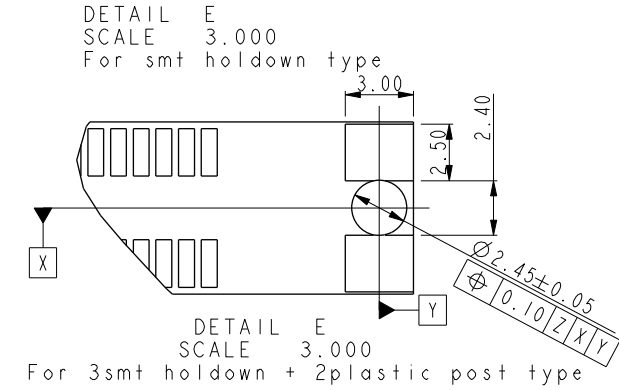
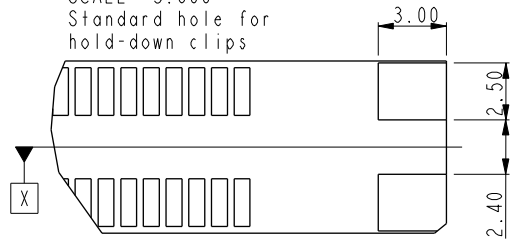
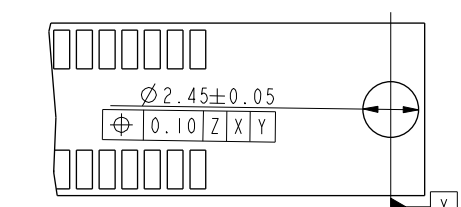
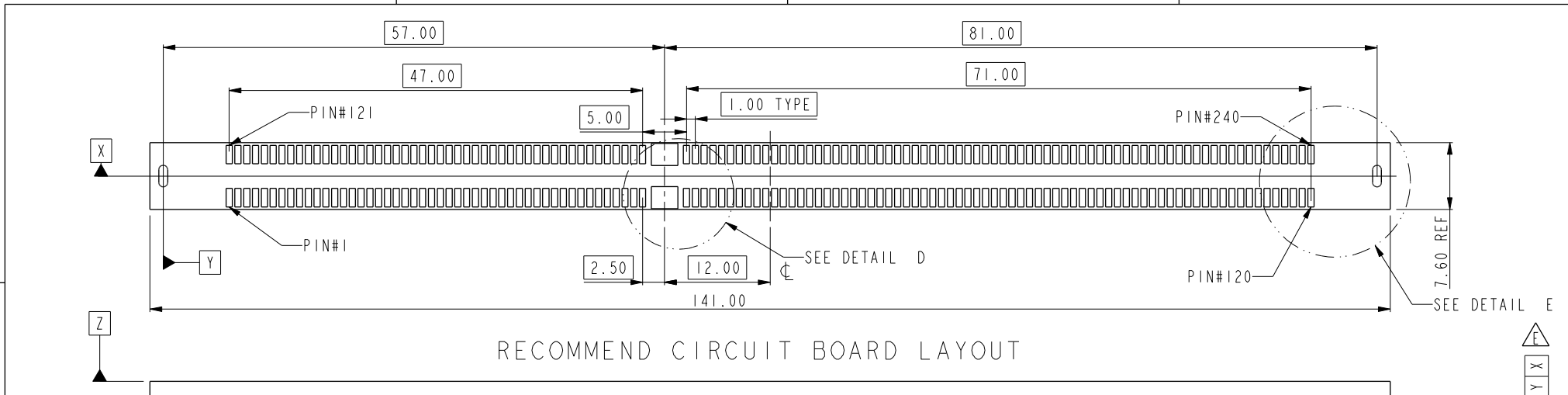
Copyright FCI.



dr	Rick Bian	2010/07/03	projection 	MM ←→	size	A4	scale	1.000
eng	Eric Jiang	2014/07/31			ecn no	ELX-DG-18366-1		
chr	Jian Huang	2014/08/04			rel level	Released		
appr	Pei-Ming Zheng	2014/08/04	product family					
		title		DDR III SMT SOCKET ASS'Y (WITH LCP HOUSING)		dwg no		10104389
www.fci.com		cat. no.		*		Product - Customer Drw		sheet 2 of 4
						rev		E



Copyright FCI.



dr	Rick Bian	2010/07/03	projection 	MM ←→	size	A4	scale	1.000
eng	Eric Jiang	2014/07/31			ecn no	ELX-DG-18366-1		
chr	Jian Huang	2014/08/04			rel level	Released		
appr	Pei-Ming Zheng	2014/08/04			product family			
www.fci.com			title	DDR III SMT SOCKET ASS'Y (WITH LCP HOUSING)		dwg no	10104389	
			cat. no.	*	Product - Customer Drw		sheet 3 of 4	
					rev		E	

ProjE File - REV C - 2009-06-09



Copyright FCI.



SCALE 0.500
10104389-10***
CENTER SMT HOLDOWN TYPE



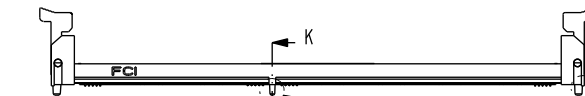
SCALE 0.500
10104389-11***
3 FORK LOCK TYPE



SCALE 0.500
10104389-12***
3 SMT HOLDOWN TYPE



SCALE 0.500
10104389-13***
3 SMT HOLDOWN AND 2 PLASTIC POST TYPE



SCALE 0.500
10104389-15***
3 PLASTIC POST TYPE

NOTES:

- MATERIAL:
HOUSING: HIGH PERFORMANCE RESINS, GLASS FILLED UL94V-0 RATED.
EJECTOR: HIGH PERFORMANCE RESINS, GLASS FILLED UL94V-0 RATED.
TERMINAL: HIGH PERFORMANCE COPPER ALLOY
METAL CLIP: COPPER ALLOY.
- FCI LOGO TO BE APPROXIMATELY LOCATED AS SHOWN ON PRINT.
- PRODUCT SPECIFICATION: GS-12-486.
- PACKAGING SPECIFICATION: GS-14-899.
- RECOMMENDED STENCIL THICKNESS NO LESS THAN 0.15 mm.
- FOR OPTIMUM PERFORMANCE, THE TIE BAR IS TO BE ON AN INTERNAL LAYER SO THAT THE REMNANT CANNOT CAUSE CONTACT DAMAGE.
- THE DATE CODE IS SHOWN "MMDDYY*.". "*" MEANS PRODUCTION LINE.
- THIS PRODUCT MEETS EUROPEAN UNION DIRECTIVES AND OTHER COUNTRY REGULATIONS AS DESCRIBED IN GS-22-008.
- THE HOUSING WILL WITH STAND EXPOSURE TO 260°C PEAK TEMPERATURE FOR 10 SECONDS IN AN IR REFLOW SOLDERING APPLICATION.
- PRODUCT APPLICATION SPEC GS-20-089.
- THE HOLDOWN TYPES ARE OPTION FOR HOLDOWN OR FORKLOCK.
- A Δ SYMBOL WILL BE NEXT TO ANY DIMENSION, VIEW, OR NOTE WHICH HAS BEEN MODIFIED WITH THE CURRENT DRAWING REVISION.

2

STYLE : MECHANICAL KEYING

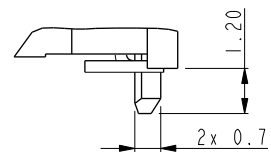
1 : 1.5 VOLT. W/ CENTER KEY

HOLD DOWN TYPE

- 0 : CENTER HOLD DOWN, FORKLOCK AT BOTH END
- 1: 3 FORKLOCK TYPE
- 2: 3 SMT HOLDOWN TYPE
- 3: 3 SMT HOLDOWN AND 2 PLASTIC POST
- 5: 3 PLASTIC POST TYPE

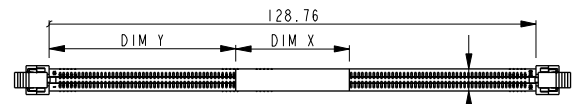
PACKAGE AND MYLAR OPTION

- Δ 0: SOFT TRAY WITHOUT MYLAR (OBSOLETE)
- 1: HARD TRAY WITH MYLAR
- 2: HARD TRAY WITHOUT MYLAR
- Δ 3: SOFT TRAY WITH MYLAR (OBSOLETE)
- 4: SPECIAL HARD TRAY WITH MYLAR
- 5: SPECIAL HARD TRAY WITHOUT MYLAR
- 6: SPECIAL HARD TRAY WITH MYLAR(24PCS/TRAY)



DETAIL N
SCALE 5.000

3



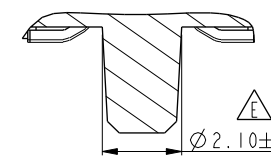
SCALE 0.500
WITH MYLAR TAPE (OPTIONAL)

PLATING

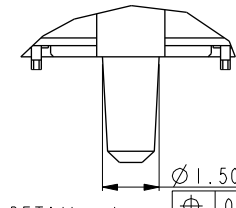
CODE	CONTACT	SOLDERTAIL	UNDERPLATE	NOTE
1LF	10u" (0.25um) MIN. GOLD			CONTACT NON-LUBRICANT
2LF	15u" (0.38um) MIN. GOLD			
3LF	30u" (0.76um) MIN. GOLD			
4LF	GOLD FLASH	100u" (2.54um) MIN. 100% MATT TIN	50u" (1.27um) MIN. NICKEL OVERALL	CONTACT LUBRICATED
5LF	10u" (0.25um) MIN. GOLD			
6LF	15u" (0.38um) MIN. GOLD			
7LF	30u" (0.76um) MIN. GOLD			
8LF	GOLD FLASH			

COLOR OF HOUSING AND EJECTOR

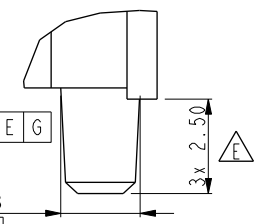
- 0 : BLACK HOUSING + IVORY EJECTOR
- 1 : BLACK HOUSING + BLACK EJECTOR
- 2 : IVORY HOUSING + IVORY EJECTOR
- 9 : IVORY HOUSING + BLACK EJECTOR



SECTION K-K
SCALE 5.000



DETAIL J
SCALE 5.000



DETAIL M
SCALE 5.000

dr	Rick Bian	2010/07/03	projection	MM	size	A4	scale	1.000
eng	Eric Jiang	2014/07/31	product family	← →	ecn no			
chr	Jian Huang	2014/08/04			ELX-DG-18366-1			
appr	Pei-Ming Zheng	2014/08/04	product family		rel level		Released	
www.fci.com		title		dwg no		rev		
		DDR III SMT SOCKET ASS'Y (WITH LCP HOUSING)		10104389		E		
cat. no.		*		Product - Customer Drw		sheet 4 of 4		

2

3

PDS: Rev :E

STATUS:Released

Printed: Aug 05, 2014

Mouser Electronics

Authorized Distributor

Click to View Pricing, Inventory, Delivery & Lifecycle Information:

[FCI / Amphenol:](#)

[10104389-13697LF](#) [10104389-13617LF](#) [10104389-13627LF](#) [10104389-13603LF](#) [10104389-13613LF](#) [10104389-13607LF](#) [10104389-13623LF](#) [10104389-13693LF](#)