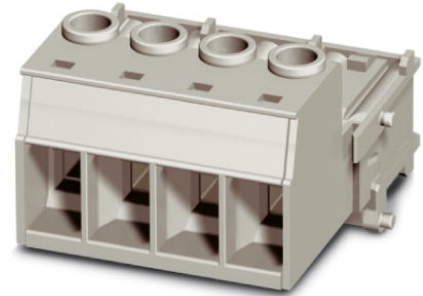


## VC-AMS 7

Order No.: 1607751

The illustration shows the product version VC-AMS 4

<http://eshop.phoenixcontact.de/phoenix/treeViewClick.do?UID=1607751>

Contact insert module, for panel mounting frames, with screw connection, 6-pos. + PE, 690 V / 70 A

### Commercial data

EAN	4017918969219
Pack	5 pcs.
Customs tariff	85366990
Weight/Piece	0.07829 KG
Catalog page information	Page 353 (PC-2009)

### Product notes

WEEE/RoHS-compliant since:  
03/27/2007



<http://www.download.phoenixcontact.com>  
Please note that the data given here has been taken from the online catalog. For comprehensive information and data, please refer to the user documentation. The General Terms and Conditions of Use apply to Internet downloads.

### Technical data

#### General data

Note	Plug connectors may only be connected/disconnected when under no load.
Connection method	Screw connection
	Screw connection
Tightening torque	1.2 Nm ... 1.8 Nm

Ambient temperature (operation)	-40 °C ... 100 °C
Pollution degree	3
Surge voltage category	III
Number of positions	7
Insertion/withdrawal cycles	≥ 500
Design	VC4
Conductor cross section AWG/kcmil min.	20
Conductor cross section AWG/kcmil max	6
Connection in acc. with standard	IEC / EN
Conductor cross section	0.5 mm <sup>2</sup> ... 16 mm <sup>2</sup>
Connection cross section AWG	20 ... 5
Stripping length of the individual wire	12 mm

**Material data**

Inflammability class acc. to UL 94	V0
Contact material	CuZn
Contact surface material	hard-silver plated
Contact carrier material	PA

**Electrical characteristics**

Rated voltage (III/3)	690 V
Rated surge voltage	6 kV
	6 kV
Rated current	70 A
	70 A

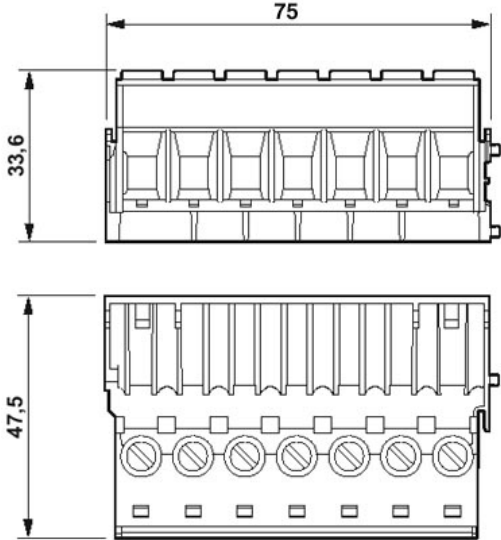
**Accessories**

Item	Designation	Description
<b>Plug/Adapter</b>		
1600027	CP-HCC 4	Keying profile for contact inserts, Color: red

**Drawings**

Dimensioned drawing

---



**Address**

PHOENIX CONTACT GmbH & Co. KG  
Flachsmarktstr. 8  
32825 Blomberg, Germany  
Phone +49 5235 3 00  
Fax +49 5235 3 41200  
<http://www.phoenixcontact.com>



© 2009 Phoenix Contact  
Technical modifications reserved;