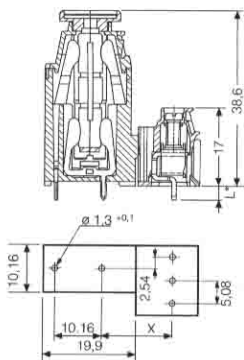
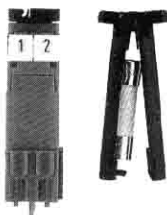


Fuse Holders



In combination with	X mm (in)
LP 5.08/.../90	12.84 (0.51)
LPP 5.08/.../90	15.24 (0.60)

The LPA SI fuse holder will accept G-fuses 5 x 20 or 5 x 25 (DIN 820 or IEC127/part 2). The power loss is 1.6 W.

It can be latched onto the rear of the **LP 5.08/90** and **LPP 5.08/90** terminals. It can also be used separately on the PCB or dovetailed (also in combination with LPA TR), whereby a maximum of 12 fuse holders can be dovetailed together.

Technical data

	VDE	UL	CSA
Rated voltage	250 V	300 V	300 V
Rated current	6.3 A	10 A	10 A

Ordering data

Type	can be used with	Solder pin length		Qty.
		3.2 mm	4.5 mm	
LPA SI OR	LP 5.08/90 and LPP 5.08/90	1495060000	1495160000	50

Test Plugs



Ø 2.00 mm

The test plug permits a simple and easy check on whether terminals with a test point are live or not.

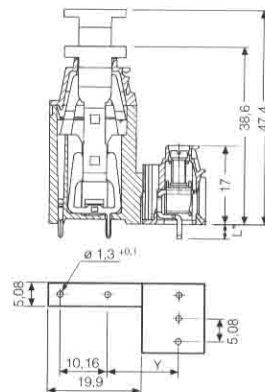
The following terminals have a test point:

LP 5.08/135	LPP 5.08/90
LP 5.00/135	LPP 5.00/90
LPP 7.50/135	LPP 7.62/90
LP 7.62/135	LPP 7.50/90
GSE 10	LX 15.00

Ordering data

Type	for max. cable	Part No.	Qty.
PS 2.0	0.75 mm ²	0310000000	20

Disconnect Elements



In combination with	Y mm (in)
LP 5.08/.../90	12.84 (0.51)
LPP 5.08/.../90	15.24 (0.60)

The LPA TR disconnect element can be latched to the rear of the **LP 5.08/90** and **LPP 5.08/90**. It can also be dovetailed (also in combination with LPA SI) on the PCB, whereby a maximum of 24 disconnect elements can be dovetailed together.

Technical data

	VDE	UL	CSA
Rated voltage	250 V	300 V	300 V
Rated current	9 A	10 A	10 A

Ordering data

Type	can be used with	Solder pin length		Qty.
		3.2 mm	4.5 mm	
LPA TR OR	LP 5.08/90 and LPP 5.08/90	1495460000	1495560000	100