

Bus system flat-type plug - SACC-DSIV-MSD-4CON-L180 SCOTHR - 1552175


Please be informed that the data shown in this PDF Document is generated from our Online Catalog. Please find the complete data in the user's documentation. Our General Terms of Use for Downloads are valid (<http://phoenixcontact.com/download>)



Bus system flush-type plug, 4-pos., M12 SPEEDCON, D-coded, rear/screw mounting with M12 thread, with straight THR solder connection



Key commercial data

Packing unit	60 pc
Minimum order quantity	60 pc
GTIN	 4 046356 162036
Weight per Piece (excluding packing)	9.4 g
Custom tariff number	85366990
Country of origin	Germany
Note	Made to Order (non-returnable)

Technical data

Ambient conditions

Ambient temperature (operation)	-25 °C ... 85 °C (Plug)
Degree of protection	IP67

General

Rated current at 40°C	4 A
Rated voltage	250 V
Number of positions	4
Contact resistance	≤ 3 mΩ
Insulation resistance	≥ 100 MΩ
Coding	D - data
Status display	No
Surge voltage category	II
Pollution degree	3

Bus system flat-type plug - SACC-DSIV-MSD-4CON-L180 SCOTHR - 1552175

Technical data

General

Connection method	THR solder connection
Mounting type	Rear mounting M12 x 1 With flat nut

Material

Inflammability class according to UL 94	V0
Contact material	CuZn
Contact surface material	Au
Contact carrier material	PA 66
Material, knurls	Zinc die-cast, nickel-plated
Sealing material	FKM / EPDM

Classifications

eCl@ss

eCl@ss 4.0	27250313
eCl@ss 4.1	27250313
eCl@ss 5.0	27143423
eCl@ss 5.1	27143423
eCl@ss 6.0	27143423
eCl@ss 7.0	27449001
eCl@ss 8.0	27440103

ETIM

ETIM 3.0	EC002061
ETIM 4.0	EC000830
ETIM 5.0	EC002061

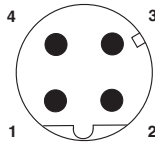
UNSPSC

UNSPSC 6.01	31251501
UNSPSC 7.0901	31251501
UNSPSC 11	31251501
UNSPSC 12.01	31251501
UNSPSC 13.2	31251501

Drawings

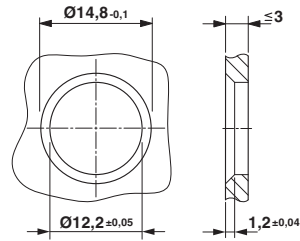
Bus system flat-type plug - SACC-DSIV-MSD-4CON-L180 SCOTHR - 1552175

Schematic diagram



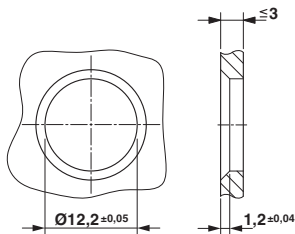
Pin assignment M12 male connector, 4-pos., D-coded, male side

Dimensioned drawing

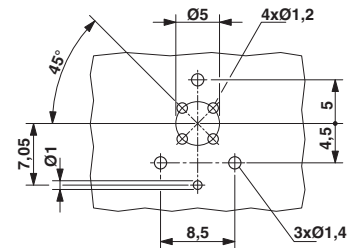


Housing cut-out for two-part M12 flush-type connectors with THR and wave soldering connection, version 1

Dimensioned drawing

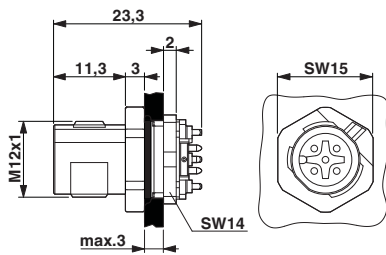


Drilling diagram



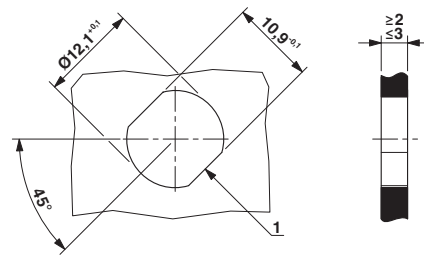
Housing cut-out for two-part M12 flush-type connectors with THR and wave soldering connection, version 2

Dimensioned drawing



M12 flush-type plug

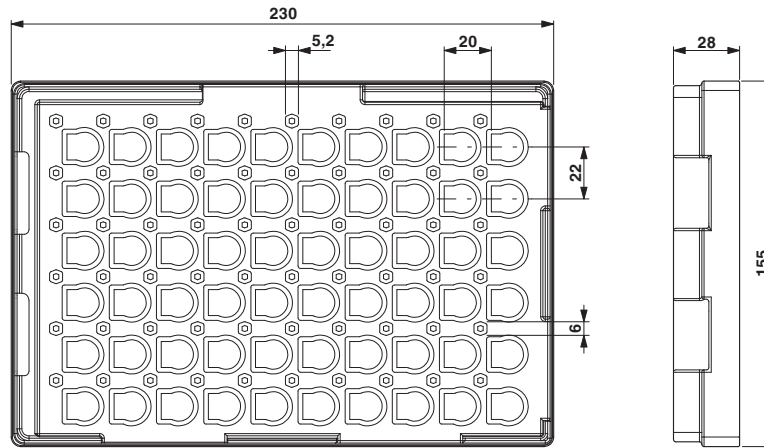
Dimensioned drawing



Housing cutout for M12 fastening thread, mounting panel with feed-through hole (alternative with surface as protection against rotation)

Bus system flat-type plug - SACC-DSIV-MSD-4CON-L180 SCOTHR - 1552175

Dimensioned drawing



THR tray packaging