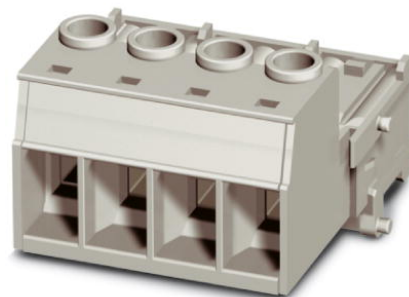


VC-AMS 4

Order No.: 1607745



<http://eshop.phoenixcontact.de/phoenix/treeViewClick.do?UID=1607745>

Contact insert module, for panel mounting frames, with screw connection, 3-pos. + PE, 690 V / 70 A

Commercial data

EAN	4017918969196
Pack	5 pcs.
Customs tariff	85366990
Weight/Piece	0.04848 KG
Catalog page information	Page 353 (PC-2009)

Product notes

WEEE/RoHS-compliant since:
12/15/2006



<http://www.download.phoenixcontact.com>
Please note that the data given here has been taken from the online catalog. For comprehensive information and data, please refer to the user documentation. The General Terms and Conditions of Use apply to Internet downloads.

Technical data

General data

Note	Plug connectors may only be connected/disconnected when under no load.
Connection method	Screw connection
	Screw connection
Tightening torque	1.2 Nm ... 1.8 Nm

Ambient temperature (operation)	-40 °C ... 100 °C
Pollution degree	3
Surge voltage category	III
Number of positions	4
Insertion/withdrawal cycles	≥ 500
Design	VC2/3/4
Conductor cross section AWG/kcmil min.	20
Conductor cross section AWG/kcmil max	6
Connection in acc. with standard	IEC / EN
Conductor cross section	0.5 mm ² ... 16 mm ²
Connection cross section AWG	20 ... 5
Stripping length of the individual wire	12 mm

Material data

Inflammability class acc. to UL 94	V0
Contact material	CuZn
Contact surface material	hard-silver plated
Contact carrier material	PA

Electrical characteristics

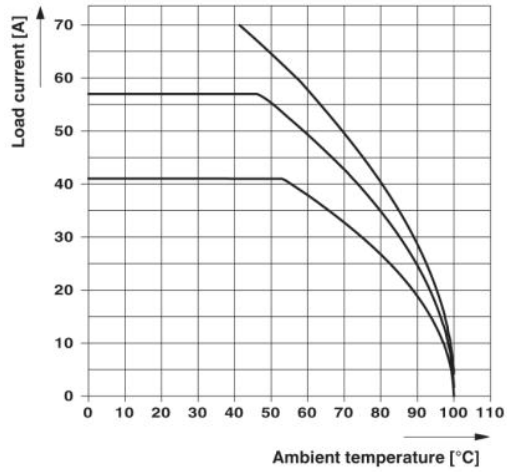
Rated voltage (III/3)	690 V
Rated surge voltage	6 kV
	6 kV
Rated current	70 A
	70 A

Accessories

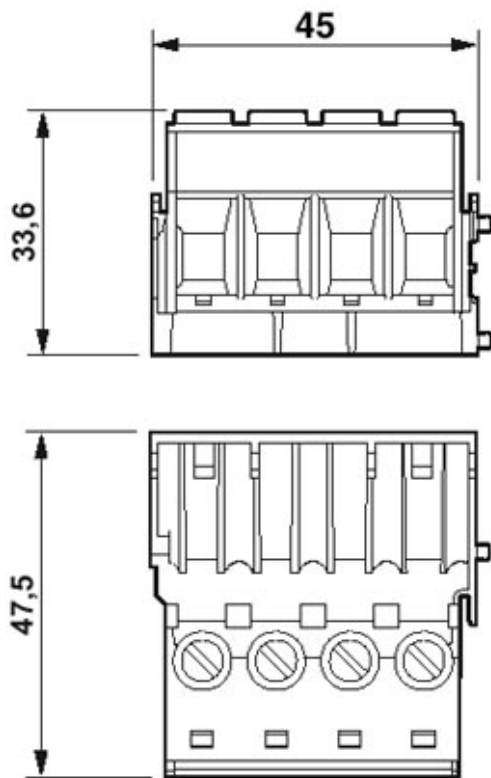
Item	Designation	Description
Plug/Adapter		
1600027	CP-HCC 4	Keying profile for contact inserts, Color: red

Drawings

Diagram



Dimensioned drawing



Address

PHOENIX CONTACT GmbH & Co. KG
Flachsmarktstr. 8
32825 Blomberg, Germany
Phone +49 5235 3 00
Fax +49 5235 3 41200
<http://www.phoenixcontact.com>



© 2009 Phoenix Contact
Technical modifications reserved;