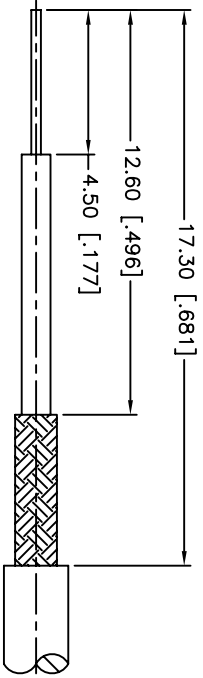
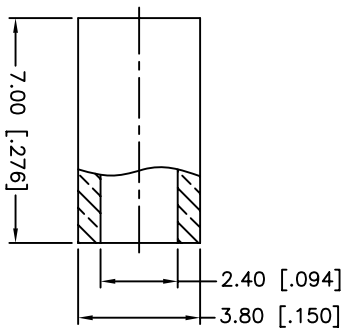
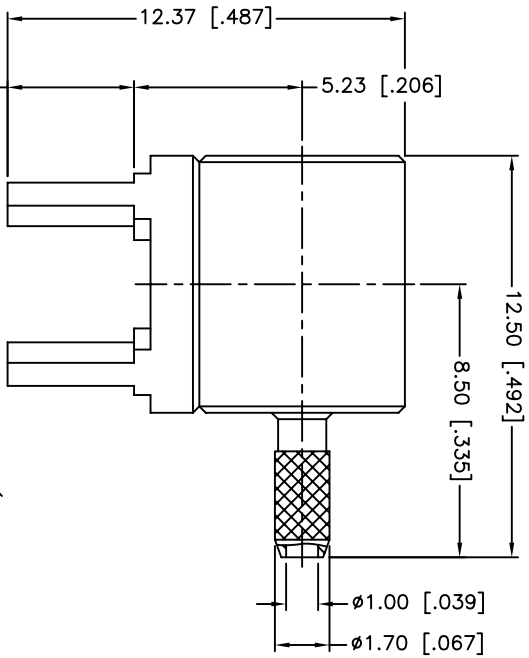
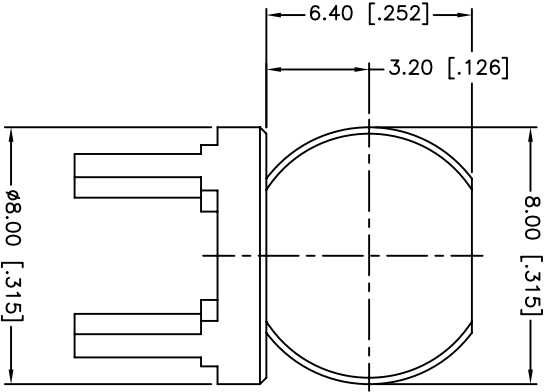
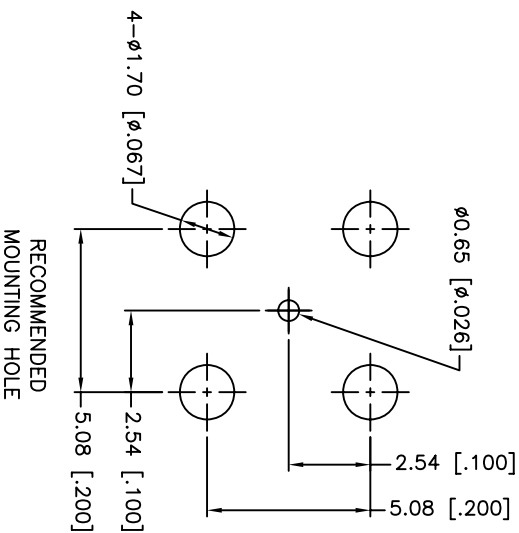
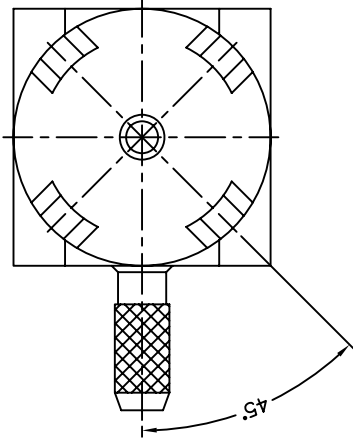


REV.	DATE	ECR NO.	DESCRIPTION
NC	01/04/00	XXXXXX	INITIAL RELEASE
A	04/06/06	XXXXXX	UPDATE DRAWING FORMAT
B	07/02/13	XXXXXX	CHANGE FERRULE LENGTH



RECOMMENDED
CABLE STRIPPING DIM'S



1. CRIMPED FERRULE
HEX CRIMP SIZE .128"

QTY	FINISH	MATERIAL	DESCRIPTION
1	GOLD	COPPER	FERRULE
1	GOLD	BRASS	BODY
1	GOLD	BRASS	BARREL

UNLESS OTHERWISE SPECIFIED DIMENSIONS ARE IN MILLIMETERS DIMENSIONS IN [] ARE IN INCHES AND FOR CUSTOMER REFERENCE ONLY. TOLERANCES FOR MILLIMETERS ARE:
 <math>< .05 \pm 0.05\text{mm}</math>
 0.5 - 6mm $\pm 0.10\text{mm}</math>
 6 - 30mm $\pm 0.20\text{mm}</math>
 30 - 120mm $\pm 0.30\text{mm}</math>
 ANGLES $\pm 1^\circ$
 UNLESS OTHERWISE SPECIFIED TOLERANCES FOR INCHES ARE:
 <math>< .020 \pm 0.002''</math>
 .020 - .236 = $\pm 0.004''</math>
 .236 - 1.180 = $\pm 0.007''</math>
 1.180 - 4.724 = $\pm 0.012''</math>
 ANGLES $\pm 1^\circ$
 DO NOT SCALE DRAWING$$$$$$

APPROVALS	DATE
M.ZHANG	07/02/13
CHECKED	
ISSUED	
SHEET	1 OF 1
CAD FILE	C:/CONNEX/142270.DWG

Amphenol Connex

PART DESCRIPTION
R/A PCB CABLE TERMINAL
(FOR RG-178B/U, 196A/U)

PART NO. 142270

DWG. NO. 142270.DWG

REV. B

SIZE A

SCALE NA