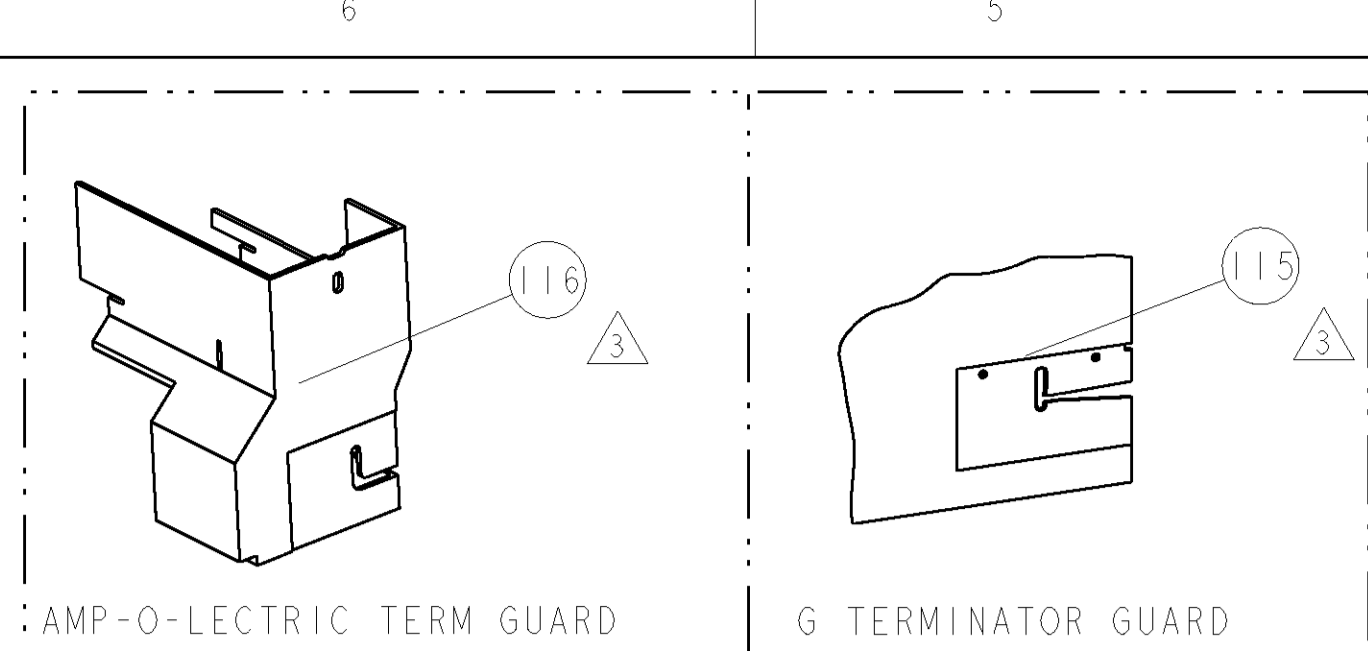


PART NUMBER	REV	FIRST USED	POWER UNIT	FEED TYPE	DESCRIPTION
1855116-1	A	122500-1	LEADMAKER	POST FEED	CUTS CARRIER
1855116-2	A	565435-5	BENCH MODEL K	PRE FEED	CUTS CARRIER
1855116-3	A	354500-1	BENCH MODEL G	PRE FEED	CUTS CARRIER
1855116-6	A	122500-1	LEADMAKER	POST FEED	CONTINUOUS CARRIER
7-1855116-7	A	-	-	-	SPARE PARTS

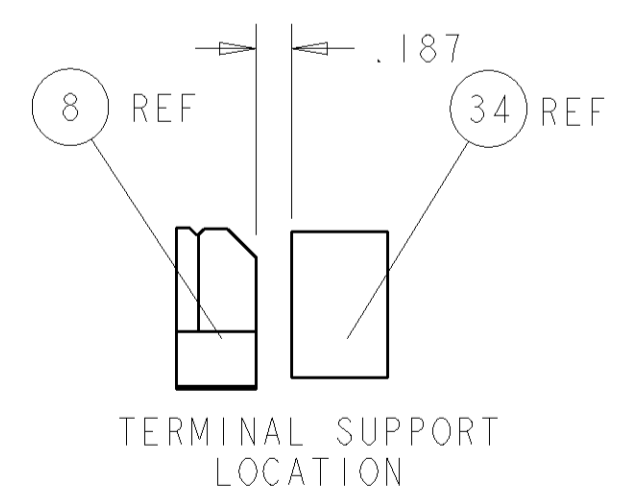
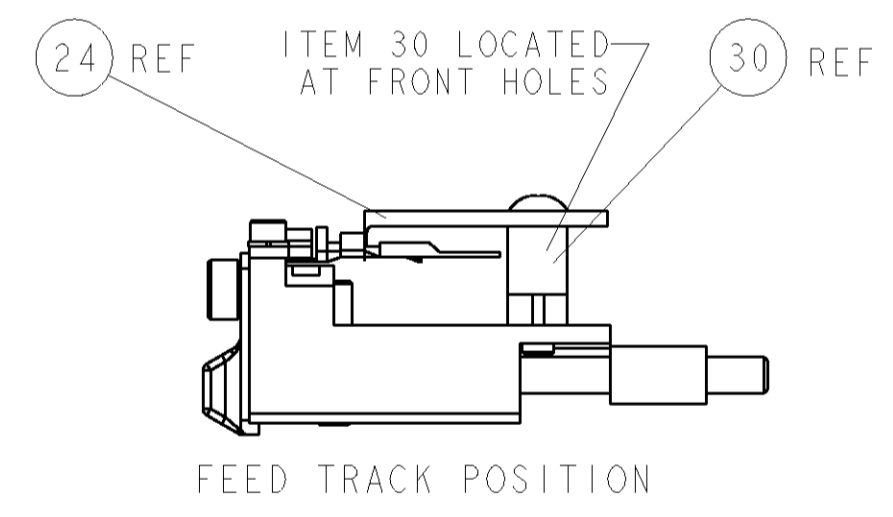
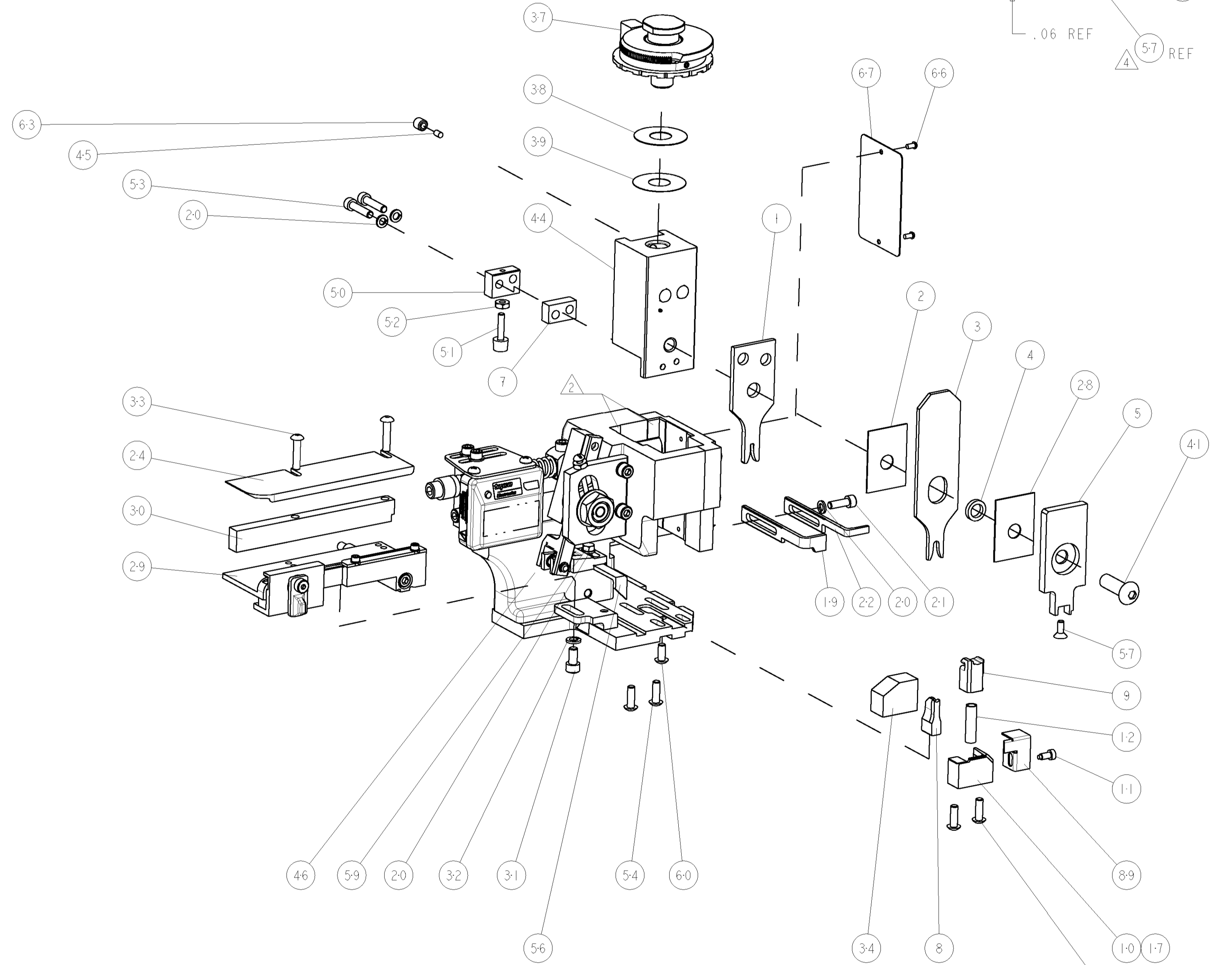
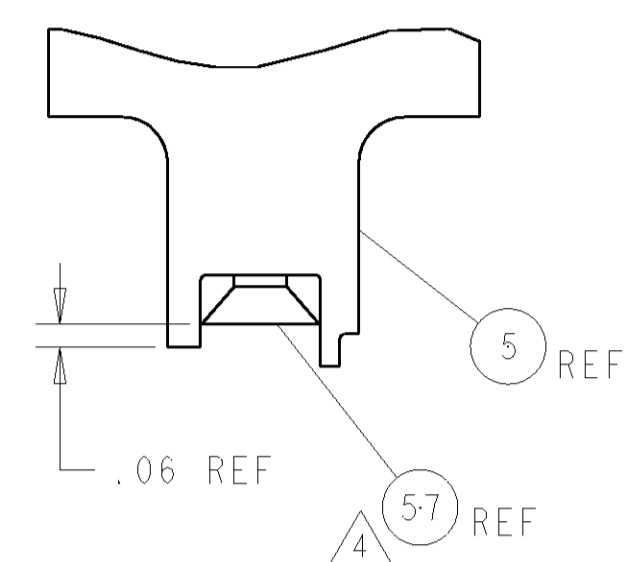


TYCO PN		MFG PN		FURUKAWA TERMINAL - AMP CRIMP SPECS		
1949113	-	FW-M-085	-	CRIMP HEIGHT	WIRE SIZE	REF SETTING
-	-	-	-	1.40±0.05mm [.055±.002]	1.25mm2	C4
-	-	-	-	1.35±0.05mm [.053±.002]	0.85mm2	C6
-	-	-	-	1.25±0.05mm [.049±.002]	0.5mm2	D4
SEAL PN.	CRIMP	SIZE	TYPE	RANGE		
1949114	FW-W-B031	WIRE	1.98mm [.078]	F	0.50-1.25mm2	
-	-	INSUL	3.71mm [.146]	O	Ø2.95mm MAX	
WIRE STRIP LENGTH	TERM APPL SPEC	FEED	APPLICATOR INSTRUCTIONS		SET UP GAGE	
3.96-4.34mm	NONE	11.1mm	408-8040		458637-1	

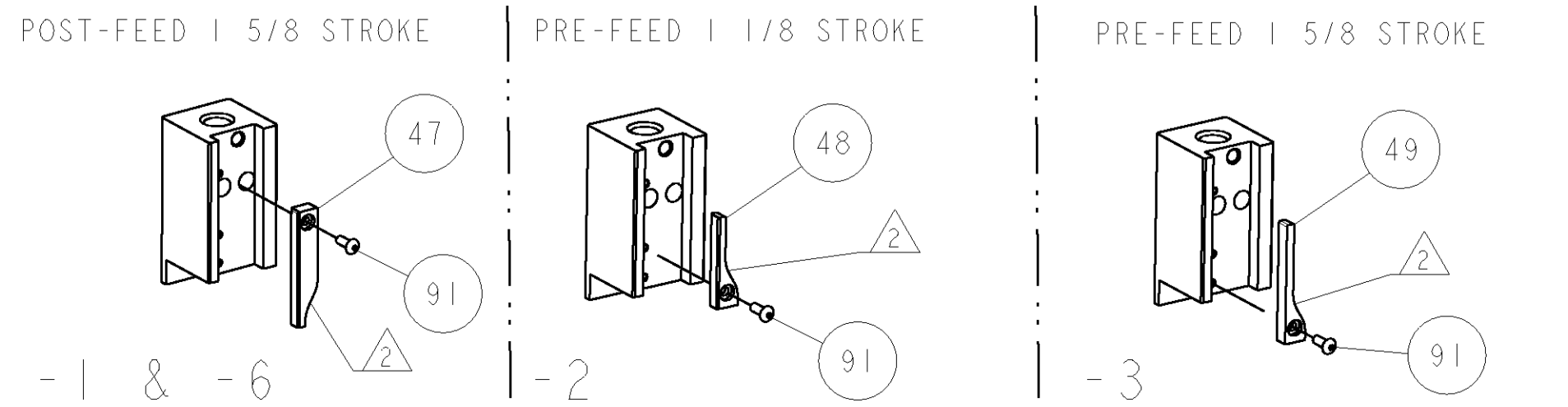
LOC	DIST	REV	DESCRIPTION	DATE	BY	APPD
A	66	A	RELEASED	21SEP2006	LG	GB

- △ RECOMMENDED SPARE PARTS
- △ GREASE LIGHTLY
- △ GUARD MUST BE IN PLACE WHEN OPERATING APPLICATOR IN A BENCH MACHINE
- △ APPLY TORQ-SEAL IN ALLEN SOCKET TO FILL HOLE AFTER FLAT HD HAS BEEN ADJUSTED TO CORRECT HEIGHT AT QUALIFICATION. APPLY PN 1-23419-5 LOC-TITE TO THREADS.
- △ IF THE INSULATION DIAMETER IS LESS THAN 1.8mm THE INSULATION HEIGHT SHOULD BE 3.0±0.1mm. IF THE INSULATION DIAMETER IS BETWEEN 1.8-2.2mm THE INSULATION HEIGHT SHOULD BE 3.4±0.1mm

*** WARNING**
ON INSTALLATION, SET WIRE DISC TO LARGEST WIRE SIZE SETTING. USE OF SETTINGS BELOW MIN. REQUIRED CRIMP HEIGHT SETTING WILL CAUSE DAMAGE TO CRIMP TOOLING.



QTY	REF	DESCRIPTION	ITEM NO
1	REF	GUARD WINDOW	116
1	REF	INSERT, GUARD	115
1	1	SCR, BTN SKT HD CAP 6-32 X .375	91
1	1	GUARD, FRONT CHIP	89
1	1	SF APPL INST 408-8040	72
1	1	GENERAL INSTRUCTION PKG	71
1	1	PLATE, IDENTIFICATION	67
2	2	SCREW, DRIVE	66
1	1	SCR, SET, SELF LOCKING 1/4-20 X .250	63
1	1	SCR, BHSC, SELF-LOCKING, 8-32 X .375	60
1	1	SCR, HEX HD CAP 8-32 X .312	59
1	1	SCR, FLT SKT HD CAP 6-32 X .375	57
1	1	PAWL, FEED	56
4	4	SCR, BTN SKT HD CAP 8-32 X .500	54
2	2	SCR, SKT HD CAP 8-32 X .750	53
1	1	NUT, HEX, REG 6-32	52
1	1	BUMPER, HOLD DOWN	51
1	1	SPACER, TONKER	50
1	1	CAM, PRE FEED, 1 5/8	49
1	1	CAM, PRE FEED, 1 1/8	48
1	1	CAM, POST FEED, 1 5/8	47
1	1	APPL. BASIC SUB ASSY (SIDE WISE MOCA)	46
1	1	PLUG, NYLON	45
1	1	RAM, SIDE FEED	44
1	1	SCR, BTN SKT HD CAP 5/16-24 X 1.00	41
1	1	SHIM SUB-ASSY	39
1	1	SHIM	38
1	1	FINE ADJUST HEAD ASSEMBLY	37
1	1	TERMINAL SUPPORT	34
2	2	SCR, BTN SKT HD CAP 8-32 X .750	33
1	1	WASHER, SPRG LOCK, REG NO 10	32
1	1	SCR, SKT HD CAP 10-32 X .375	31
1	1	SPACER, STRIP GUIDE	30
1	1	ASSEMBLY, STRIP GUIDE	29
1	1	SPACER, CRIMPER	28
1	1	PLATE, STRIP GUIDE	24
1	1	STRIPPER	22
1	1	SCR, SKT HD CAP 8-32 X .500	21
4	4	WASHER, SPRG LOCK, REG NO 8	20
1	1	STRIPPER	19
1	1	SHEAR HOLDER, FRONT (NO CUT)	17
1	1	SPRING, COMPRESSION	12
1	1	STOP, SHEAR	11
1	1	SHEAR HOLDER, FRONT	10
1	1	FLOATING SHEAR, FRONT	9
1	1	ANVIL, COMBINATION	8
1	1	SPACER	7
1	1	DEPRESSOR, SHEAR	5
1	1	BLOCK, CRIMPER SPACER	4
1	1	CRIMPER, INSUL O	3
1	1	SPACER, CRIMPER	2
1	1	CRIMPER, WIRE PREMIUM	1



DIMENSIONS: INCHES 	TOLERANCES UNLESS OTHERWISE SPECIFIED: 0 PLC ±.001 1 PLC ±.001 2 PLC ±.001 3 PLC ±.001 4 PLC ±.001 ANGLES ±.001	DWG NO: 05AUG2006 CHK: T. ELBIN APD: T. BENCHOFF PRODUCT SPEC: APPLICATION SPEC: MATERIAL: FINISH:	tyco Tyco Electronics Harrisburg, PA 17105-3608 Electronic NAME: FINE ADJUST SIDE FEED HDM APPLICATOR SIZE: A1 CAGE CODE: 00779 DRAWING NO: 1855116 SCALE: 3:5 SHEET: 1 OF 1 REV: A
---------------------------	---	--	---

CUSTOMER VIEWABLE ASSEMBLY

Mouser Electronics

Authorized Distributor

Click to View Pricing, Inventory, Delivery & Lifecycle Information:

[TE Connectivity:](#)

[1855116-3](#)