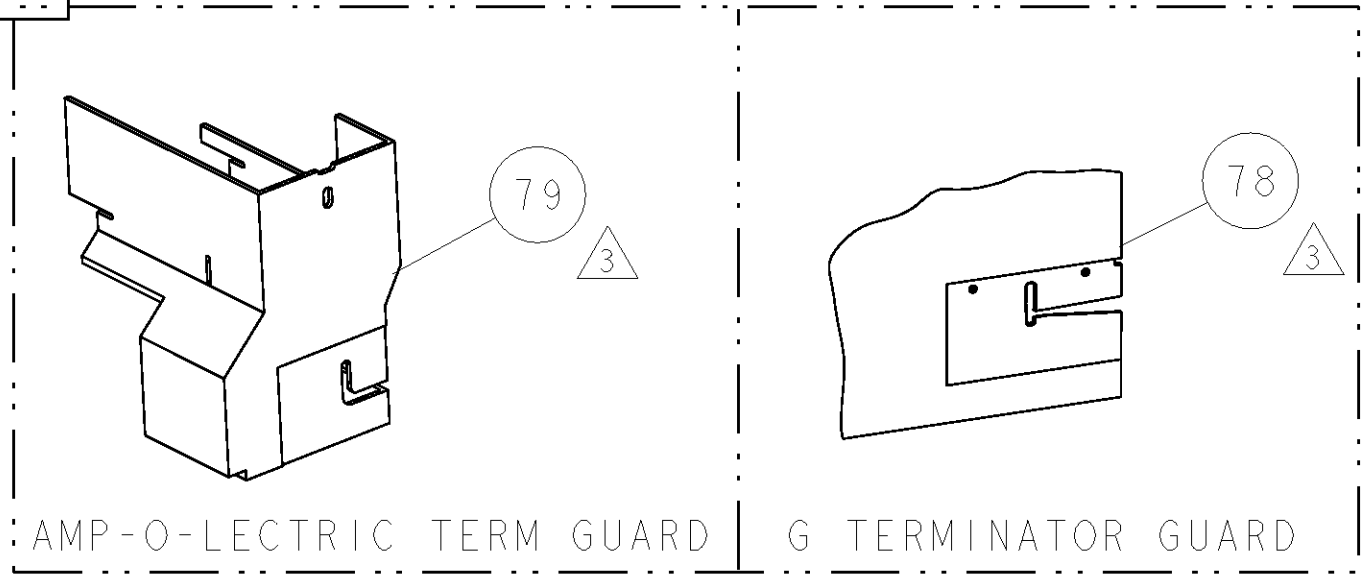
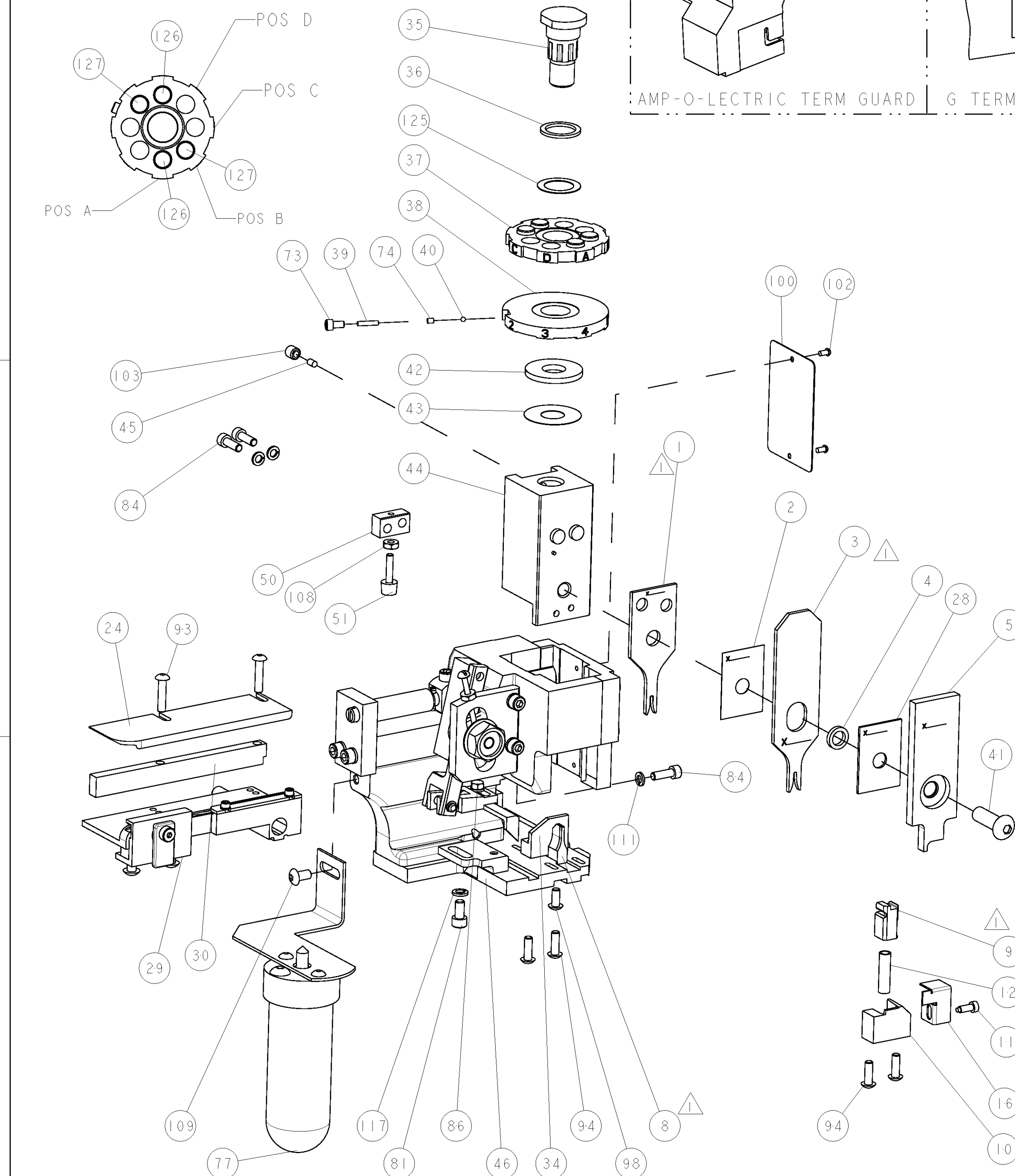


PART NUMBER	REV	FIRST USED	POWER UNIT	FEED TYPE
1385702-1	B	122500-1	LEADMAKER	POST FEED
1385702-2	B	565435-5	BENCH MODEL K	PRE FEED
1385702-3	B	354500-1	BENCH MODEL G	PRE FEED
7-1385702-7	B		SPARE PARTS KIT	



TERMINAL NAME: FLAT PLUG				
AMP TERM PN	MFR TERM PN	ITT CANNON TERMINAL - AMP CRIMP SPECS		
1572372-1	110238-0401			
1572372-2	110238-0480	PAD LTR	CRIMP HEIGHT	WIRE SIZE
-	-	A	.038±.002 [.97±0.05mm]	24
-	-	B	.036±.002 [.91±0.05mm]	26
-	-	C	-	-
-	-	D	-	-
SEAL PN.	CRIMP	SIZE	TYPE	RANGE
-	-	WIRE	.062 [1.57mm]	F 26 - 24
-	-	INSUL	.070 [1.78mm]	O Ø.047 MAX
WIRE STRIP LENGTH	TERM APPL SPEC	FEED	APPL INSTRUCTIONS	SET UP GAGE
.107-.137	NONE	.253	408-8040	458637-1

LOC	DIST	REV	DATE	BY	APPV
A	66				



- △ RECOMMENDED SPARE PARTS
- △ GREASE LIGHTLY
- △ GUARD MUST BE IN PLACE WHEN OPERATING APPLICATOR IN A BENCH MACHINE

QTY	U/M	PART NO	DESCRIPTION	ITEM NO
-	-	-	-	129
-	-	-	-	128
-	2	2	4-354779-9 PIN, WIRE DISC, .3235	127
-	2	2	4-354779-4 PIN, WIRE DISC, .3210	126
-	1	1	986950-1 WASHER, FLAT PRECISION	125
-	1	1	217238-1 GENERAL INSTRUCTION PKG	124
-	1	1	4088040 SF APPL INST 408-8040	123
-	-	-	-	122
-	-	-	-	121
-	-	-	-	120
-	-	-	-	119
-	-	-	-	118
-	1	1	21024-5 WASHER, SPRG LOCK, REG NO 10	117
-	-	-	-	116
-	-	-	-	115
-	-	-	-	114
-	-	-	-	113
-	-	-	-	112
-	4	4	21024-4 WASHER, SPRG LOCK, REG NO 8	111
-	-	-	-	110
-	1	1	2-21002-6 SCR, BTN SKT HD CAP 10-32 X .375	109
-	1	1	21018-5 NUT, HEX, REG 6-32	108
-	-	-	-	107
-	-	-	-	106
-	-	-	-	105
-	-	-	-	104
-	1	1	21007-2 SCR, SET, CUP POINT 1/4-20 X .250	103
-	2	2	21017-2 SCREW, DRIVE	102
-	-	-	-	101
-	1	1	461264-1 PLATE, IDENTIFICATION	100
-	-	-	-	99
-	1	1	22733-8 SCR, BHSC, SELF-LOCKING, 8-32 X .375	98
-	-	-	-	97
-	-	-	-	96
-	-	-	-	95
-	2	2	4 2-21002-2 SCR, BTN SKT HD CAP 8-32 X .500	94
-	2	2	2-21002-4 SCR, BTN SKT HD CAP 8-32 X .750	93
-	-	-	-	92
-	1	1	1-21002-7 SCR, BTN SKT HD CAP 6-32 X .375	91
-	-	-	-	90
-	-	-	-	89
-	-	-	-	88
-	2	2	2-21000-7 SCR, SKT HD CAP 8-32 X .500	87
-	1	1	2-22603-0 SCR, HEX HD CAP 8-32 X .312	86
-	-	-	-	85
-	1	1	2-21000-7 SCR, SKT HD CAP 8-32 X .500	84
-	-	-	-	83
-	-	-	-	82
-	1	1	3-21000-4 SCR, SKT HD CAP 10-32 X .375	81
-	-	-	-	80
-	-	-	-	79
-	REF	-	455749-1 GUARD WINDOW	78
-	REF	-	679532-1 INSERT, GUARD	77
-	1	1	1-465184-0 LUBRICATOR ASSY	76
-	-	-	-	75
-	1	1	690603-1 SPRING ASSIST AMP-O-MATOR APPLICATOR	74
-	-	-	-	73
-	-	-	-	72
-	-	-	-	71
-	-	-	-	70
-	-	-	-	69
-	-	-	-	68
-	-	-	-	67
-	-	-	-	66
-	-	-	-	65
-	-	-	-	64
-	-	-	-	63
-	-	-	-	62
-	-	-	-	61
-	-	-	-	60
-	-	-	-	59
-	-	-	-	58
-	-	-	-	57
-	-	-	-	56
-	-	-	-	55
-	-	-	-	54
-	-	-	-	53
-	-	-	-	52
-	-	-	-	51
-	-	-	-	50
-	-	-	-	49
-	-	-	-	48
-	-	-	-	47
-	-	-	-	46
-	-	-	-	45
-	-	-	-	44
-	-	-	-	43
-	-	-	-	42
-	-	-	-	41
-	-	-	-	40
-	-	-	-	39
-	-	-	-	38
-	-	-	-	37
-	-	-	-	36
-	-	-	-	35
-	-	-	-	34
-	-	-	-	33
-	-	-	-	32
-	-	-	-	31
-	-	-	-	30
-	-	-	-	29
-	-	-	-	28
-	-	-	-	27
-	-	-	-	26
-	-	-	-	25
-	-	-	-	24
-	-	-	-	23
-	-	-	-	22
-	-	-	-	21
-	-	-	-	20
-	-	-	-	19
-	-	-	-	18
-	-	-	-	17
-	-	-	-	16
-	-	-	-	15
-	-	-	-	14
-	-	-	-	13
-	-	-	-	12
-	-	-	-	11
-	-	-	-	10
-	-	-	-	9
-	-	-	-	8
-	-	-	-	7
-	-	-	-	6
-	-	-	-	5
-	-	-	-	4
-	-	-	-	3
-	-	-	-	2
-	-	-	-	1
-	-	-	-	0

QTY	U/M	PART NO	DESCRIPTION	ITEM NO
-	-	-	-	73
-	-	-	-	72
-	-	-	-	71
-	-	-	-	70
-	-	-	-	69
-	-	-	-	68
-	-	-	-	67
-	-	-	-	66
-	-	-	-	65
-	-	-	-	64
-	-	-	-	63
-	-	-	-	62
-	-	-	-	61
-	-	-	-	60
-	-	-	-	59
-	-	-	-	58
-	-	-	-	57
-	-	-	-	56
-	-	-	-	55
-	-	-	-	54
-	-	-	-	53
-	-	-	-	52
-	-	-	-	51
-	-	-	-	50
-	-	-	-	49
-	-	-	-	48
-	-	-	-	47
-	-	-	-	46
-	-	-	-	45
-	-	-	-	44
-	-	-	-	43
-	-	-	-	42
-	-	-	-	41
-	-	-	-	40
-	-	-	-	39
-	-	-	-	38
-	-	-	-	37
-	-	-	-	36
-	-	-	-	35
-	-	-	-	34
-	-	-	-	33
-	-	-	-	32
-	-	-	-	31
-	-	-	-	30
-	-	-	-	29
-	-	-	-	28
-	-	-	-	27
-	-	-	-	26
-	-	-	-	25
-	-	-	-	24
-	-	-	-	23
-	-	-	-	22
-	-	-	-	21
-	-	-	-	20
-	-	-	-	19
-	-	-	-	18
-	-	-	-	17
-	-	-	-	16
-	-	-	-	15
-	-	-	-	14
-	-	-	-	13
-	-	-	-	12
-	-	-	-	11
-	-	-	-	10
-	-	-	-	9
-	-	-	-	8
-	-	-	-	7
-	-	-	-	6
-	-	-	-	5
-	-	-	-	4
-	-	-	-	3
-	-	-	-	2
-	-	-	-	1
-	-	-	-	0

