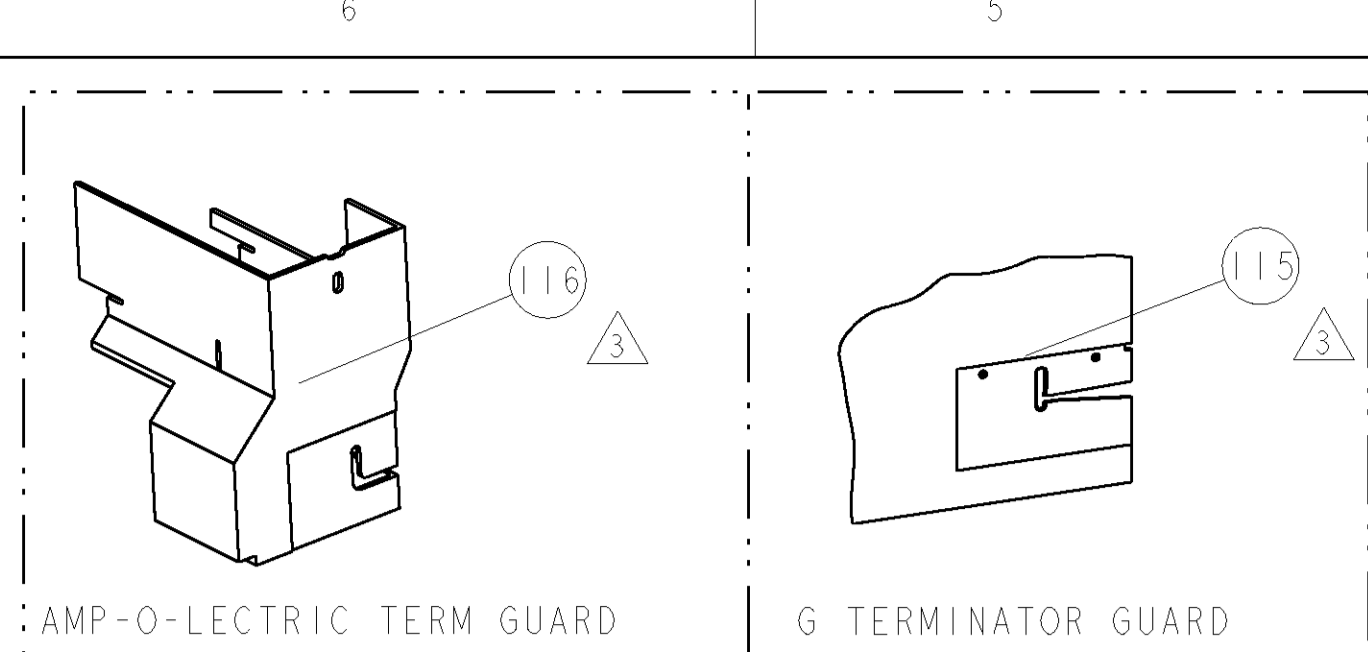
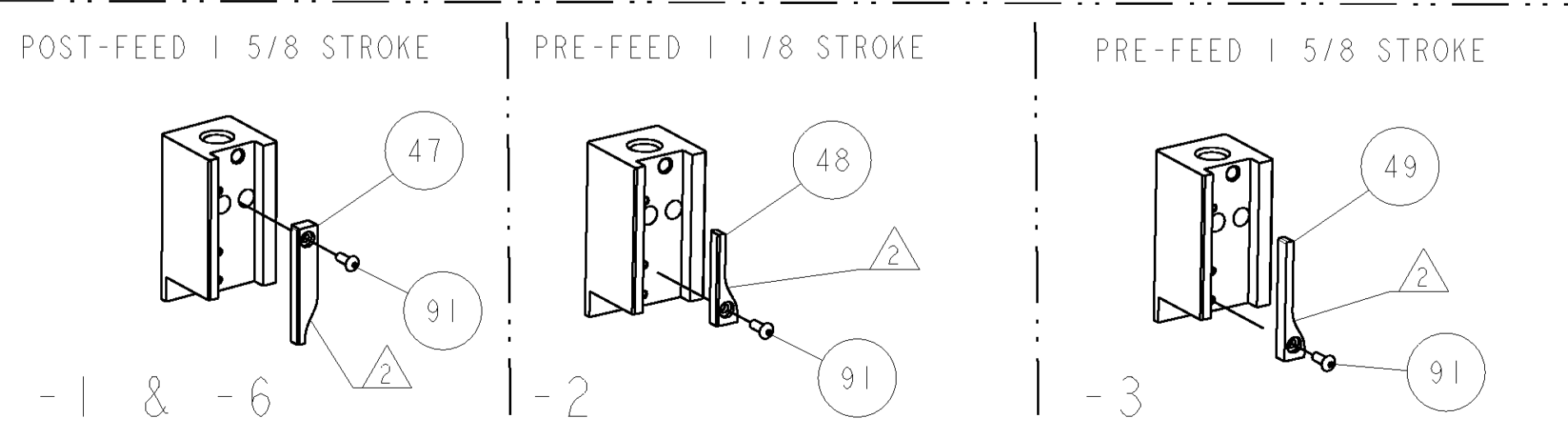
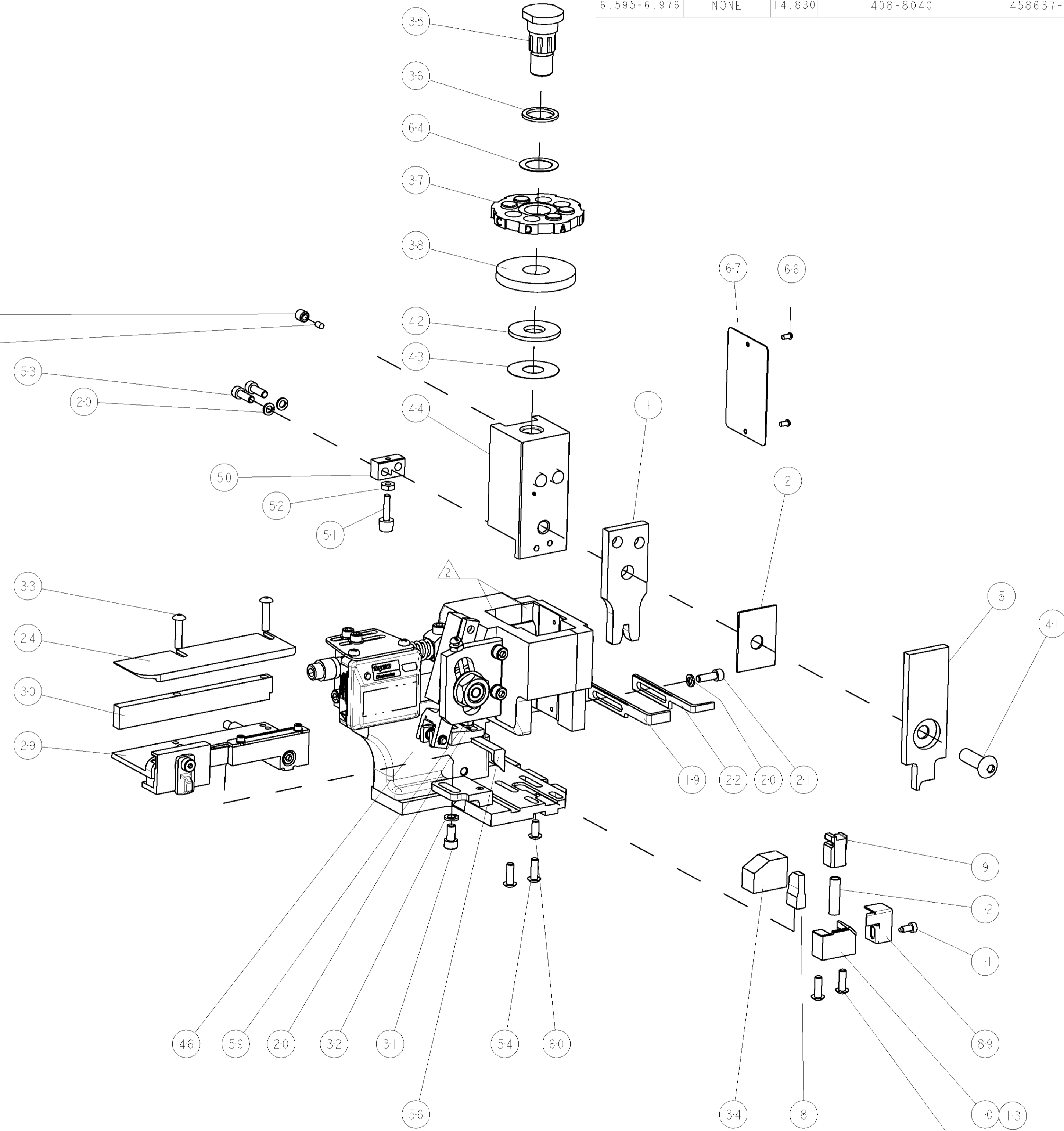
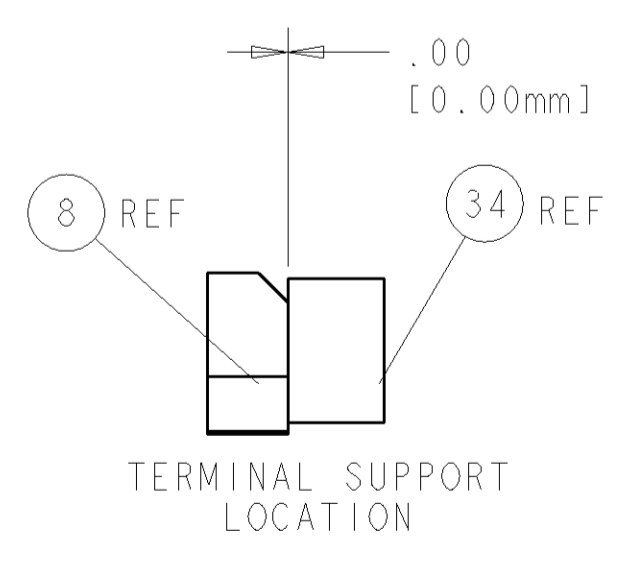
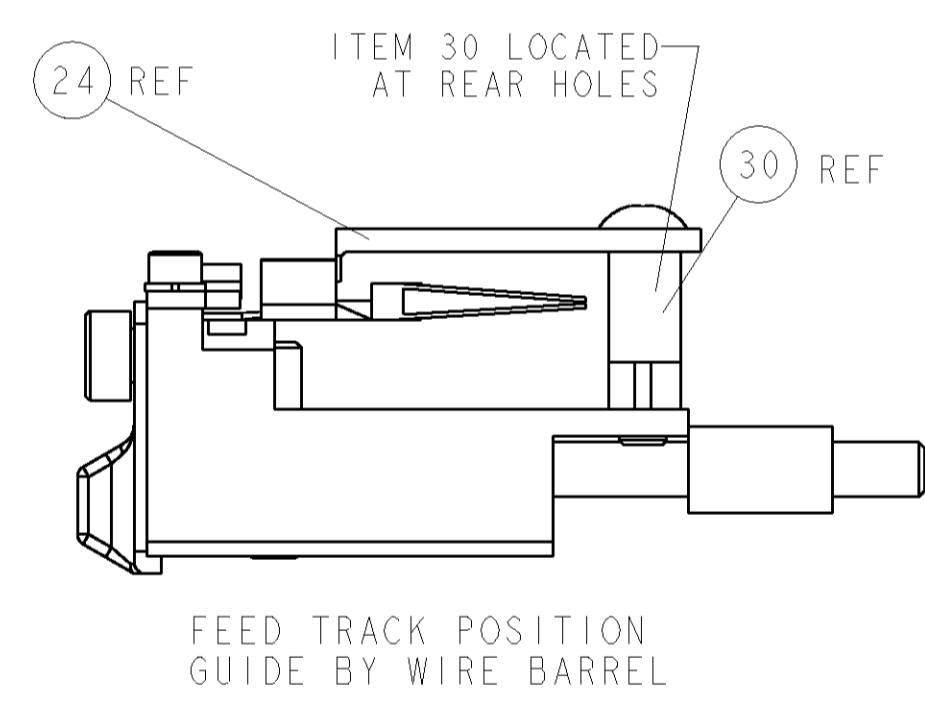
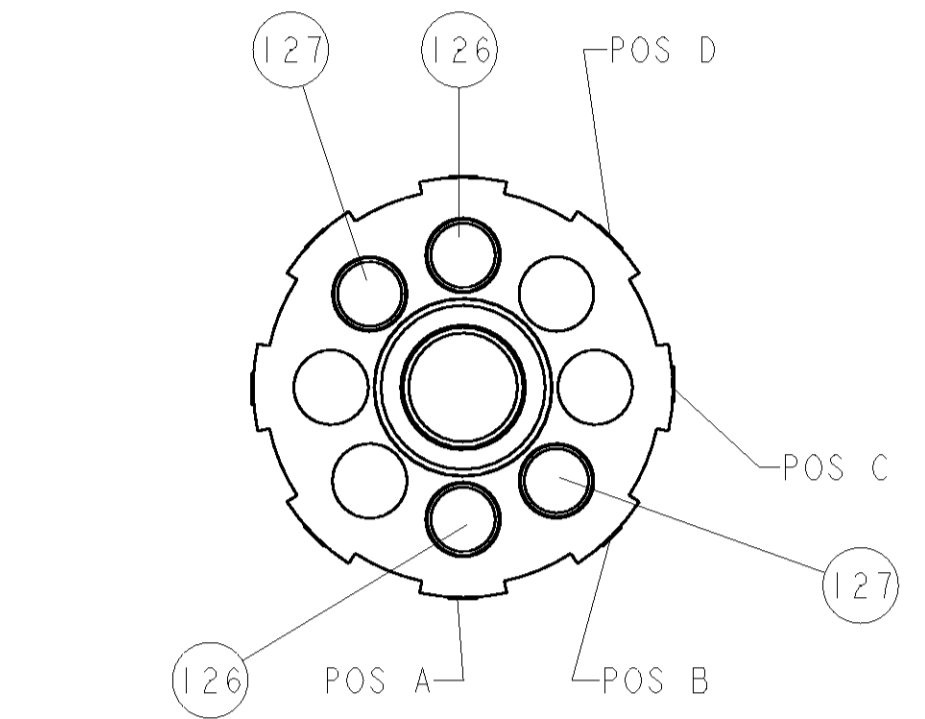


| PART NUMBER | REV | FIRST USED | POWER UNIT | FEED TYPE | DESCRIPTION |
|-------------|-----|------------|---------------|-----------|--------------------|
| 1852696-1 | A | 122500-1 | LEADMAKER | POST FEED | CUTS CARRIER |
| 1852696-2 | A | 565435-5 | BENCH MODEL K | PRE FEED | CUTS CARRIER |
| 1852696-3 | A | 354500-1 | BENCH MODEL G | PRE FEED | CUTS CARRIER |
| 1852696-6 | A | 122500-1 | LEADMAKER | POST FEED | CONTINUOUS CARRIER |
| 7-1852696-7 | A | - | - | - | SPARE PARTS |



| TERMINAL NAME: DEKKO FEMALE TERMINAL | | | |
|--------------------------------------|----------------|---------------------------------|---------------------------------------|
| TE PN | DEKKO PN | DEKKO TERMINAL - TE CRIMP SPECS | |
| 1949685-1 | 120208-4 | | |
| - | - | PAD LTR | CRIMP HEIGHT |
| - | - | A | 2.82mm+.05/- .05 [.111+.002/- .002] |
| - | - | B | 2.50mm+.05/- .05 [.098+.002/- .002] |
| - | - | C | - |
| - | - | D | - |
| - | - | CRIMP | SIZE |
| - | - | - | TYPE |
| - | - | - | RANGE |
| - | - | WIRE | 3.94mm [.155] |
| - | - | INSUL | - |
| WIRE STRIP LENGTH | TERM APPL SPEC | FEED | APPLICATOR INSTRUCTIONS |
| 6.595-6.976 | NONE | 14.830 | 408-8040 |
| | | | SET UP GAGE |
| | | | 458637-1 |

- △ RECOMMENDED SPARE PARTS
- △ GREASE LIGHTLY
- △ GUARD MUST BE IN PLACE WHEN OPERATING APPLICATOR IN A BENCH MACHINE



| LOC | DIST | P LTR | DESCRIPTION | DATE | DWN | APVD | | |
|-----|------|-------|-------------|-----------|-----|------------|---------------------------------------|-----|
| A | 66 | A | RELEASED | 16JUN2008 | BH | BH | | |
| - | 2 | 2 | 2 | 2 | - | 354779-7 | PIN, WIRE DISC, .3025 | 127 |
| - | 2 | 2 | 2 | 2 | - | 7-354778-9 | PIN, WIRE DISC, .2890 | 126 |
| - | - | REF | - | - | .. | 455749-1 | GUARD WINDOW | 116 |
| - | - | REF | - | - | .. | 679532-1 | INSERT, GUARD | 115 |
| - | 1 | 1 | 1 | 1 | - | 1-21002-7 | SCR, BTN SKT HD CAP 6-32 X .375 | 91 |
| - | 1 | 1 | 1 | 1 | - | 318563-1 | GUARD, FRONT CHIP | 89 |
| - | 1 | 1 | 1 | 1 | - | 4088040 | SF APPL INST 408-8040 | 72 |
| - | 1 | 1 | 1 | 1 | - | 217238-1 | GENERAL INSTRUCTION PKG | 71 |
| - | 1 | 1 | 1 | 1 | - | 461264-1 | PLATE, IDENTIFICATION | 67 |
| - | 2 | 2 | 2 | 2 | - | 21017-2 | SCREW, DRIVE | 66 |
| - | 1 | 1 | 1 | 1 | - | 986950-1 | WASHER, FLAT PRECISION | 64 |
| - | 1 | 1 | 1 | 1 | - | 21009-2 | SCR, SET, SELF LOCKING 1/4-20 X .250 | 63 |
| - | 1 | 1 | 1 | 1 | - | 22733-8 | SCR, BHSC, SELF-LOCKING, 8-32 X .375 | 60 |
| - | 1 | 1 | 1 | 1 | - | 2-22603-0 | SCR, HEX HD CAP 8-32 X .312 | 59 |
| - | 1 | 1 | 1 | 1 | - | 458537-2 | PAWL, FEED | 56 |
| - | 4 | 4 | 4 | 4 | - | 2-21002-2 | SCR, BTN SKT HD CAP 8-32 X .500 | 54 |
| - | 2 | 2 | 2 | 2 | - | 2-21000-7 | SCR, SKT HD CAP 8-32 X .500 | 53 |
| - | 1 | 1 | 1 | 1 | - | 21018-5 | NUT, HEX, REG 6-32 | 52 |
| - | 1 | 1 | 1 | 1 | - | 811242-2 | BUMPER, HOLD DOWN | 51 |
| - | 1 | 1 | 1 | 1 | - | 690753-1 | SPACER, TONKER | 50 |
| - | - | - | - | - | .. | 690602-6 | CAM, PRE FEED, 1 5/8 | 49 |
| - | - | - | - | - | .. | 690602-5 | CAM, PRE FEED, 1 1/8 | 48 |
| - | 1 | 1 | 1 | 1 | - | 690501-4 | CAM, POST FEED, 1 5/8 | 47 |
| - | 1 | 1 | 1 | 1 | - | 459456-2 | APPL. BASIC SUB ASSY (SIDE WISE MQCA) | 46 |
| - | 1 | 1 | 1 | 1 | - | 690191-1 | PLUG, NYLON | 45 |
| - | 1 | 1 | 1 | 1 | - | 455673-5 | RAM, SIDE FEED | 44 |
| - | 1 | 1 | 1 | 1 | - | 690125-1 | SHIM SUB-ASSY | 43 |
| - | 1 | 1 | 1 | 1 | - | 690124-7 | WASHER, RAM (.090) | 42 |
| - | 1 | 1 | 1 | 1 | - | 7-21002-9 | SCR, BTN SKT HD CAP 5/16-24 X 1.00 | 41 |
| - | 1 | 1 | 1 | 1 | - | 690223-2 | SPACER, INS. | 38 |
| - | 1 | 1 | 1 | 1 | - | 354777-1 | WIRE DISC, ASSEMBLY | 37 |
| - | 1 | 1 | 1 | 1 | - | 22480-5 | SPRING, COMPRESSION | 36 |
| - | 1 | 1 | 1 | 1 | - | 690212-1 | POST, RAM | 35 |
| - | 1 | 1 | 1 | 1 | - | 690786-6 | TERMINAL SUPPORT | 34 |
| - | 2 | 2 | 2 | 2 | - | 2-21002-4 | SCR, BTN SKT HD CAP 8-32 X .750 | 33 |
| - | 1 | 1 | 1 | 1 | - | 21024-5 | WASHER, SPRG LOCK, REG NO 10 | 32 |
| - | 1 | 1 | 1 | 1 | - | 3-21000-4 | SCR, SKT HD CAP 10-32 X .375 | 31 |
| - | 1 | 1 | 1 | 1 | - | 1320908-6 | SPACER, STRIP GUIDE | 30 |
| - | 1 | 1 | 1 | 1 | - | 1633091-2 | ASSEMBLY, STRIP GUIDE | 29 |
| - | 1 | 1 | 1 | 1 | - | 1320928-1 | PLATE, STRIP GUIDE | 24 |
| - | 1 | 1 | 1 | 1 | - | 690472-2 | STRIPPER | 22 |
| - | 1 | 1 | 1 | 1 | - | 2-21000-7 | SCR, SKT HD CAP 8-32 X .500 | 21 |
| - | 4 | 4 | 4 | 4 | - | 21024-4 | WASHER, SPRG LOCK, REG NO 8 | 20 |
| - | - | - | - | - | .. | 690472-1 | STRIPPER | 19 |
| - | 1 | 1 | 1 | 1 | - | 679625-2 | SHEAR HOLDER, FRONT (NO CUT) | 13 |
| - | 1 | 1 | 1 | 1 | - | 3-22280-3 | SPRING, COMPRESSION | 12 |
| - | 1 | 1 | 1 | 1 | - | 690461-2 | STOP, SHEAR | 11 |
| - | - | - | - | - | .. | 1-690459-0 | SHEAR HOLDER, FRONT | 10 |
| - | 1 | 1 | 1 | 1 | - | 454276-5 | FLOATING SHEAR, FRONT | 9 |
| - | 1 | 1 | 1 | 1 | - | 1633669-2 | ANVIL, WIRE | 8 |
| - | - | - | - | - | .. | - | - | 7 |
| - | - | - | - | - | .. | - | - | 6 |
| - | 1 | 1 | 1 | 1 | - | 2-455889-1 | DEPRESSOR, SHEAR | 5 |
| - | - | - | - | - | .. | - | - | 4 |
| - | - | - | - | - | .. | - | - | 3 |
| - | 1 | 1 | 1 | 1 | - | 1-455888-0 | SPACER, CRIMPER | 2 |
| - | 1 | 1 | 1 | 1 | - | 456415-9 | CRIMPER, WIRE .155 F PREMIUM | 1 |

| DIMENSIONS: | | TOLERANCES UNLESS OTHERWISE SPECIFIED: | |
|-------------|---------------|--|----------------|
| INCHES | 9 PLC ±.01 | 3 PLC ±.001 | 4 PLC ±.0001 |
| | 10 PLC ±.001 | 11 PLC ±.0001 | 12 PLC ±.0001 |
| | 13 PLC ±.001 | 14 PLC ±.0001 | 15 PLC ±.0001 |
| | 16 PLC ±.001 | 17 PLC ±.0001 | 18 PLC ±.0001 |
| | 19 PLC ±.001 | 20 PLC ±.0001 | 21 PLC ±.0001 |
| | 22 PLC ±.001 | 23 PLC ±.0001 | 24 PLC ±.0001 |
| | 25 PLC ±.001 | 26 PLC ±.0001 | 27 PLC ±.0001 |
| | 28 PLC ±.001 | 29 PLC ±.0001 | 30 PLC ±.0001 |
| | 31 PLC ±.001 | 32 PLC ±.0001 | 33 PLC ±.0001 |
| | 34 PLC ±.001 | 35 PLC ±.0001 | 36 PLC ±.0001 |
| | 37 PLC ±.001 | 38 PLC ±.0001 | 39 PLC ±.0001 |
| | 40 PLC ±.001 | 41 PLC ±.0001 | 42 PLC ±.0001 |
| | 43 PLC ±.001 | 44 PLC ±.0001 | 45 PLC ±.0001 |
| | 46 PLC ±.001 | 47 PLC ±.0001 | 48 PLC ±.0001 |
| | 49 PLC ±.001 | 50 PLC ±.0001 | 51 PLC ±.0001 |
| | 52 PLC ±.001 | 53 PLC ±.0001 | 54 PLC ±.0001 |
| | 55 PLC ±.001 | 56 PLC ±.0001 | 57 PLC ±.0001 |
| | 58 PLC ±.001 | 59 PLC ±.0001 | 60 PLC ±.0001 |
| | 61 PLC ±.001 | 62 PLC ±.0001 | 63 PLC ±.0001 |
| | 64 PLC ±.001 | 65 PLC ±.0001 | 66 PLC ±.0001 |
| | 67 PLC ±.001 | 68 PLC ±.0001 | 69 PLC ±.0001 |
| | 70 PLC ±.001 | 71 PLC ±.0001 | 72 PLC ±.0001 |
| | 73 PLC ±.001 | 74 PLC ±.0001 | 75 PLC ±.0001 |
| | 76 PLC ±.001 | 77 PLC ±.0001 | 78 PLC ±.0001 |
| | 79 PLC ±.001 | 80 PLC ±.0001 | 81 PLC ±.0001 |
| | 82 PLC ±.001 | 83 PLC ±.0001 | 84 PLC ±.0001 |
| | 85 PLC ±.001 | 86 PLC ±.0001 | 87 PLC ±.0001 |
| | 88 PLC ±.001 | 89 PLC ±.0001 | 90 PLC ±.0001 |
| | 91 PLC ±.001 | 92 PLC ±.0001 | 93 PLC ±.0001 |
| | 94 PLC ±.001 | 95 PLC ±.0001 | 96 PLC ±.0001 |
| | 97 PLC ±.001 | 98 PLC ±.0001 | 99 PLC ±.0001 |
| | 100 PLC ±.001 | 101 PLC ±.0001 | 102 PLC ±.0001 |