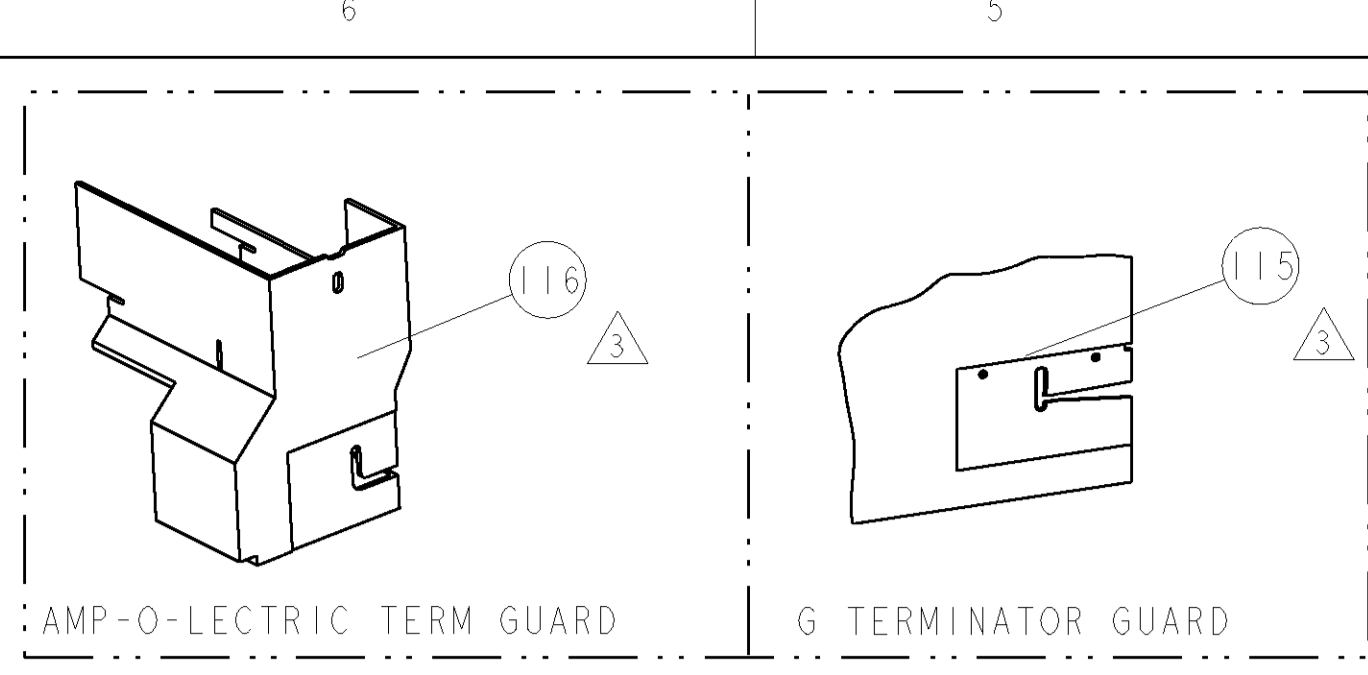


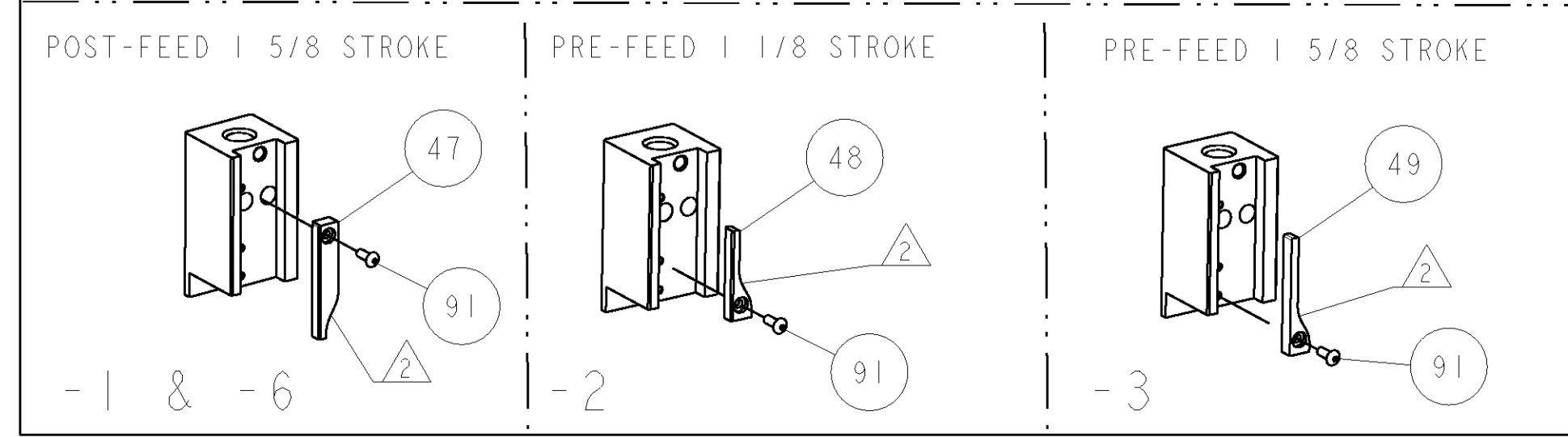
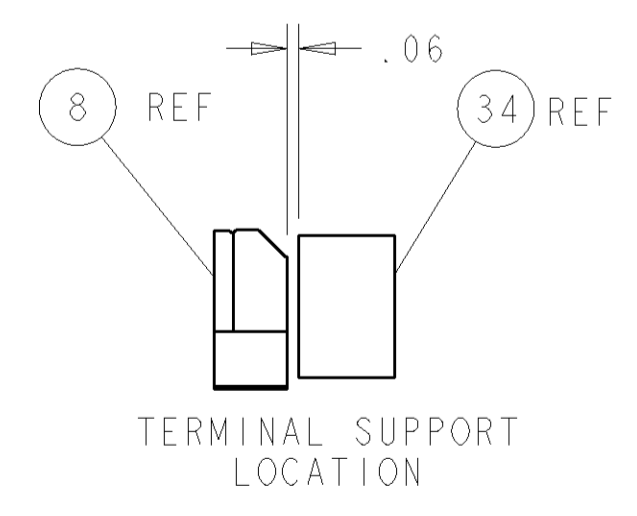
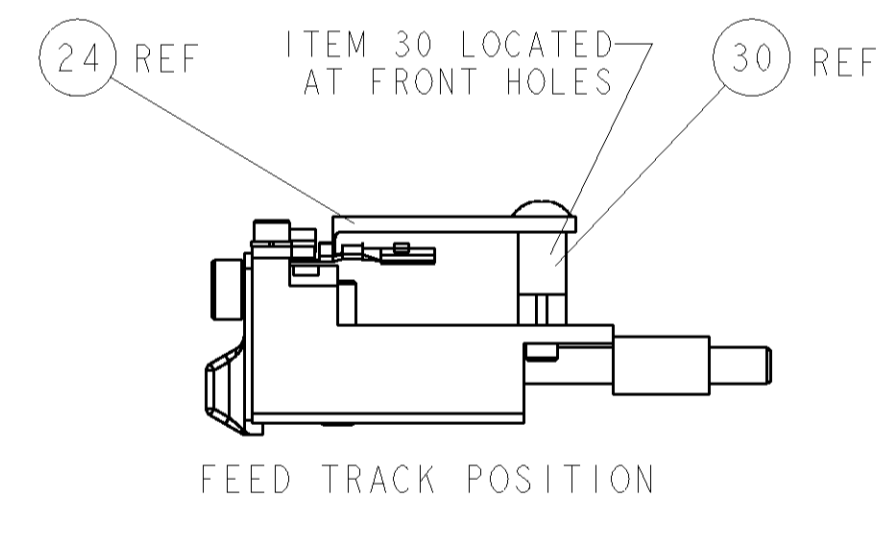
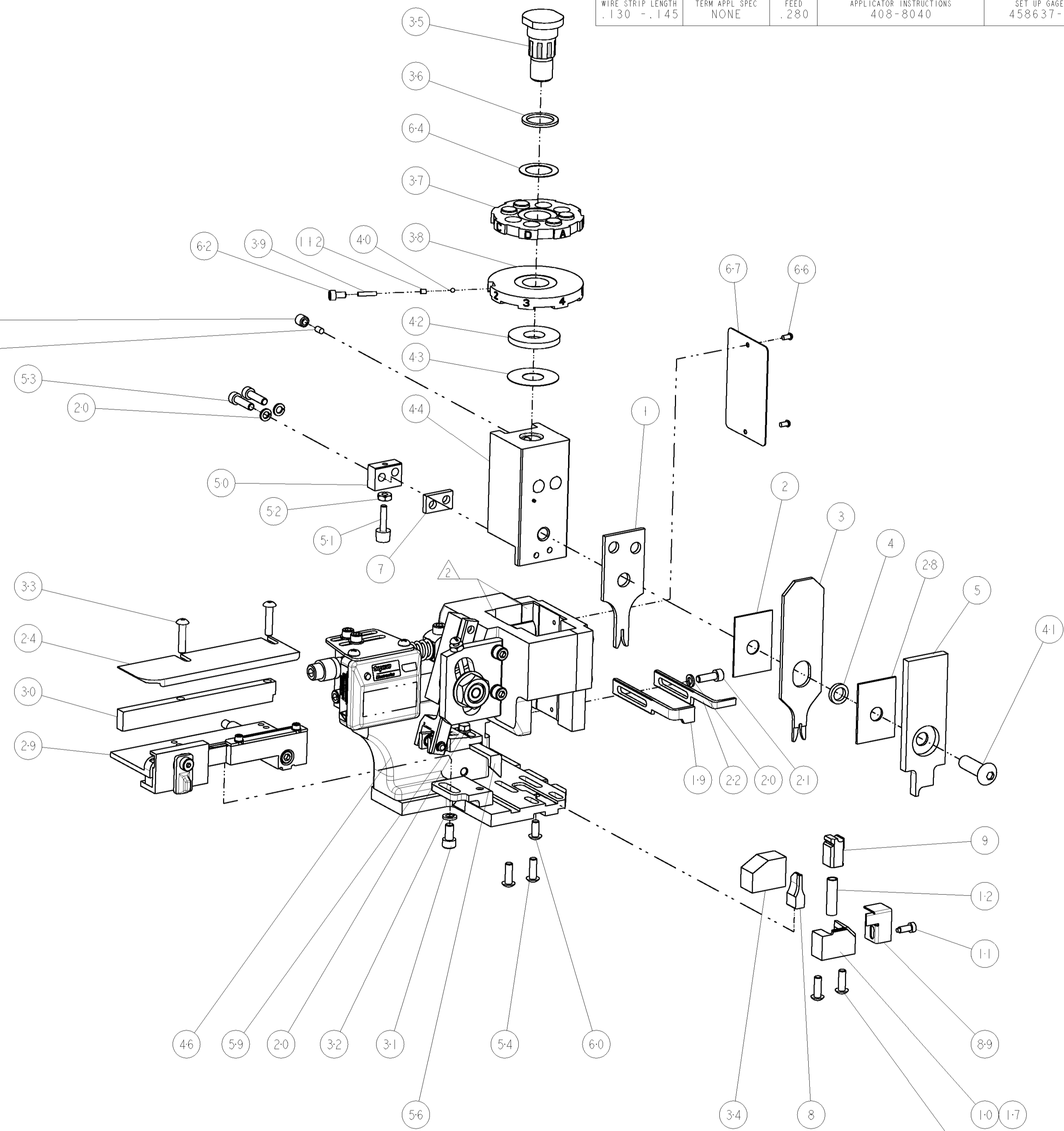
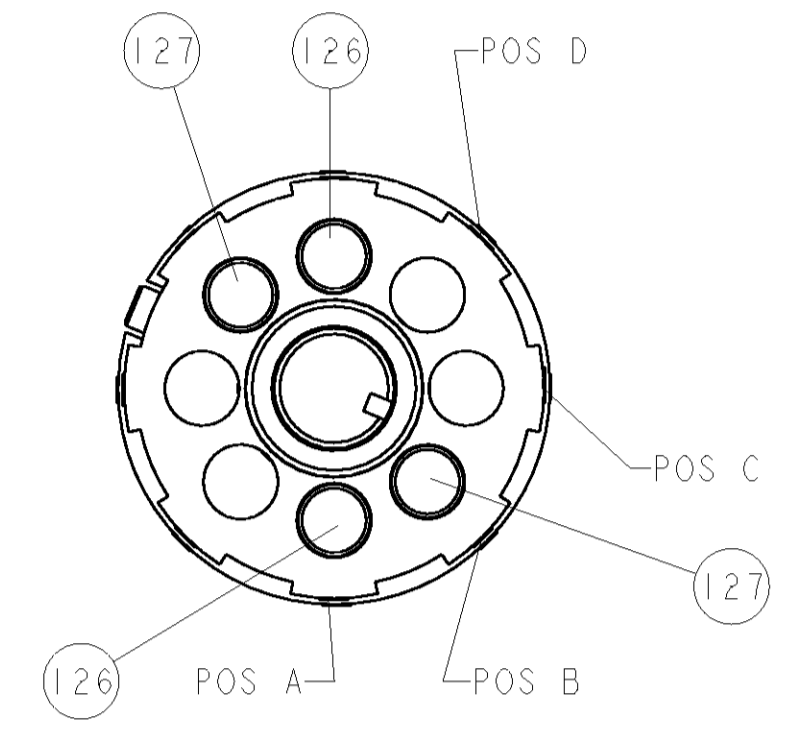
PART NUMBER	REV	FIRST USED	POWER UNIT	FEED TYPE	DESCRIPTION
1852422-1	B	122500-1	LEADMAKER	POST FEED	CUTS CARRIER
1852422-2	B	565435-5	BENCH MODEL K	PRE FEED	CUTS CARRIER
1852422-3	B	354500-1	BENCH MODEL G	PRE FEED	CUTS CARRIER
1852422-6	B	122500-1	LEADMAKER	POST FEED	CONTINUOUS CARRIER
7-1852422-7	B	-	-	-	SPARE PARTS



TERMINAL NAME: TERMINAL, FEMALE, TIN PLATED		MOLEX TERMINAL - AMP CRIMP SPECS	
TYCO PN	MANUF PN		
1949250	98913-1019		
-	-	PAD LTR	CRIMP HEIGHT
-	-	A	.030±.002 [.76±0.05mm]
-	-	B	.027±.002 [.69±0.05mm]
-	-	C	-
-	-	D	-
-	-	CRIMP	SIZE TYPE RANGE
-	-	WIRE	.055 [1.40mm] F 24-22 AWG
-	-	INSUL	.080 [2.03mm] O Ø1.60mm MAX
WIRE STRIP LENGTH	TERM APPL SPEC	FEED	APPLICATOR INSTRUCTIONS
.130 - .145	NONE	.280	408-8040
			SET UP GAGE 458637-1

LOC	DIST	REV	DESCRIPTION	DATE	BY	APPD
A	66					
		A	RELEASED	23FEB2007	MEH	TE
		B	ECR 07-005720	12MAR2007	MEH	TE

- △ RECOMMENDED SPARE PARTS
- △ GREASE LIGHTLY
- △ GUARD MUST BE IN PLACE WHEN OPERATING APPLICATOR IN A BENCH MACHINE



QTY	REV	DESCRIPTION	DATE	BY	APPD		
2	2	2	2	-	2-354779-4	PIN, WIRE DISC, .3110	127
2	2	2	2	-	1-354779-8	PIN, WIRE DISC, .3080	126
-	-	REF	-	..	455749-1	GUARD WINDOW	116
-	-	REF	-	..	679532-1	INSERT, GUARD	115
1	1	1	1	-	690603-1	SPRING ASSIST AMP-O-MATOR APPLICATOR	112
1	1	1	1	-	1-21002-7	SCR, BTN SKT HD CAP 6-32 X .375	91
1	1	1	1	-	318563-1	GUARD, FRONT CHIP	89
1	1	1	1	-	4088040	SF APPL INST 408-8040	72
1	1	1	1	-	217238-1	GENERAL INSTRUCTION PKG	71
1	1	1	1	-	461264-1	PLATE, IDENTIFICATION	67
2	2	2	2	-	21017-2	SCREW, DRIVE	66
1	1	1	1	-	986950-1	WASHER, FLAT PRECISION	64
1	1	1	1	-	21009-2	SCR, SET, SELF LOCKING 1/4-20 X .250	63
1	1	1	1	-	23030-1	SCR, SKT HD CAP 6-32 X .25	62
1	1	1	1	-	22733-8	SCR, BHSC, SELF-LOCKING, 8-32 X .375	60
1	1	1	1	-	2-22603-0	SCR, HEX HD CAP 8-32 X .312	59
1	1	1	1	-	458537-2	PAWL, FEED	56
4	4	4	4	-	2-21002-2	SCR, BTN SKT HD CAP 8-32 X .500	54
2	2	2	2	-	2-21000-8	SCR, SKT HD CAP 8-32 X .625	53
1	1	1	1	-	21018-5	NUT, HEX, REG 6-32	52
1	1	1	1	-	811242-2	BUMPER, HOLD DOWN	51
1	1	1	1	-	690753-1	SPACER, TONKER	50
-	-	1	-	..	690602-6	CAM, PRE FEED, 1 5/8	49
-	-	1	-	..	690602-5	CAM, PRE FEED, 1 1/8	48
1	1	1	1	-	690501-4	CAM, POST FEED, 1 5/8	47
1	1	1	1	-	459456-1	APPL. BASIC SUB ASSY (SIDE WISE MCCA)	46
1	1	1	1	-	690191-1	PLUG, NYLON	45
1	1	1	1	-	455673-1	RAM, SIDE FEED	44
1	1	1	1	-	690125-1	SHIM SUB-ASSY	43
1	1	1	1	-	690124-4	WASHER, RAM (.135)	42
1	1	1	1	-	7-21002-9	SCR, BTN SKT HD CAP 5/16-24 X 1.00	41
1	1	1	1	-	23241-6	BALL, STEEL	40
1	1	1	1	-	690170-1	SPRING, COMPRESSION	39
1	1	1	1	-	690142-2	DISC, INSULATION	38
1	1	1	1	-	354777-1	WIRE DISC, ASSEMBLY	37
1	1	1	1	-	22480-5	SPRING, COMPRESSION	36
1	1	1	1	-	690212-1	POST, RAM	35
1	1	1	1	-	2-690786-3	TERMINAL SUPPORT	34
2	2	2	2	-	2-21002-4	SCR, BTN SKT HD CAP 8-32 X .750	33
1	1	1	1	-	21024-5	WASHER, SPRG LOCK, REG NO 10	32
1	1	1	1	-	3-21000-4	SCR, SKT HD CAP 10-32 X .375	31
1	1	1	1	-	1-1320908-5	SPACER, STRIP GUIDE	30
1	1	1	1	-	1633091-2	ASSEMBLY, STRIP GUIDE	29
1	1	1	1	-	1-455888-0	SPACER, CRIMPER	28
1	1	1	1	-	1320928-1	PLATE, STRIP GUIDE	24
1	1	1	1	-	690472-2	STRIPPER	22
1	1	1	1	-	2-21000-7	SCR, SKT HD CAP 8-32 X .500	21
4	4	4	4	-	21024-4	WASHER, SPRG LOCK, REG NO 8	20
-	-	1	-	..	691353-1	STRIPPER	19
1	1	1	1	-	679625-1	SHEAR HOLDER, FRONT (NO CUT)	17
1	1	1	1	-	3-22280-3	SPRING, COMPRESSION	12
1	1	1	1	-	690461-1	STOP, SHEAR	11
-	-	1	-	..	690459-1	SHEAR HOLDER, FRONT	10
1	1	1	1	-	462006-1	FLOATING SHEAR, FRONT	9
1	1	1	1	-	1-1633106-5	ANVIL, COMBINATION .055	8
1	1	1	1	-	240641-5	SPACER	7
1	1	1	1	-	2-455889-0	DEPRESSOR, SHEAR	5
1	1	1	1	-	1-238011-0	BLOCK, CRIMPER SPACER	4
1	1	1	1	-	1633398-4	CRIMPER, INSULATION 0	3
1	1	1	1	-	455888-7	SPACER, CRIMPER	2
1	1	1	1	-	1-562108-5	CRIMPER, WIRE, F	1

QTY	REV	PART NO	DESCRIPTION	ITEM NO				
-77	-6	-3	-2	-1	U/M	PART NO	DESCRIPTION	ITEM NO