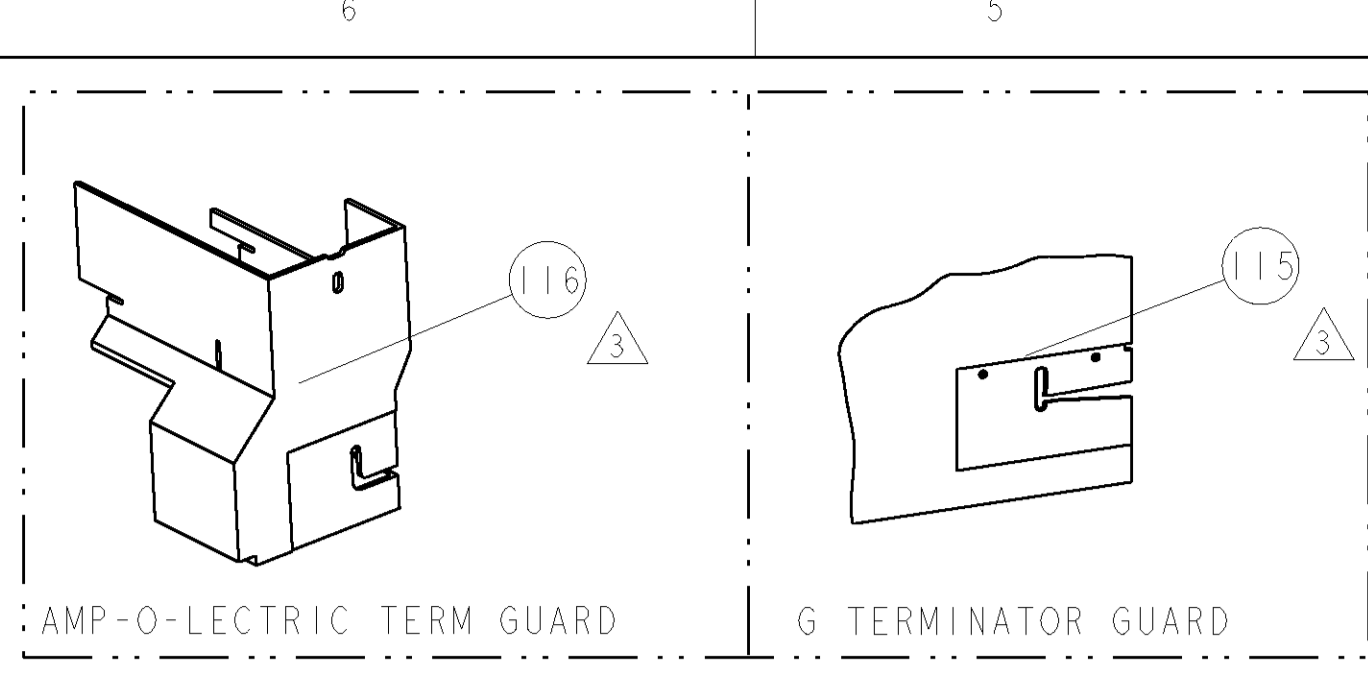


PART NUMBER	REV	FIRST USED	POWER UNIT	FEED TYPE	DESCRIPTION
1855378-1	A	122500-1	LEADMAKER	POST FEED	CUTS CARRIER
1855378-2	A	565435-5	BENCH MODEL K	PRE FEED	CUTS CARRIER
1855378-3	A	354500-1	BENCH MODEL G	PRE FEED	CUTS CARRIER
1855378-6	A	122500-1	LEADMAKER	POST FEED	CONTINUOUS CARRIER
7-1855378-7	A	-	-	-	SPARE PARTS

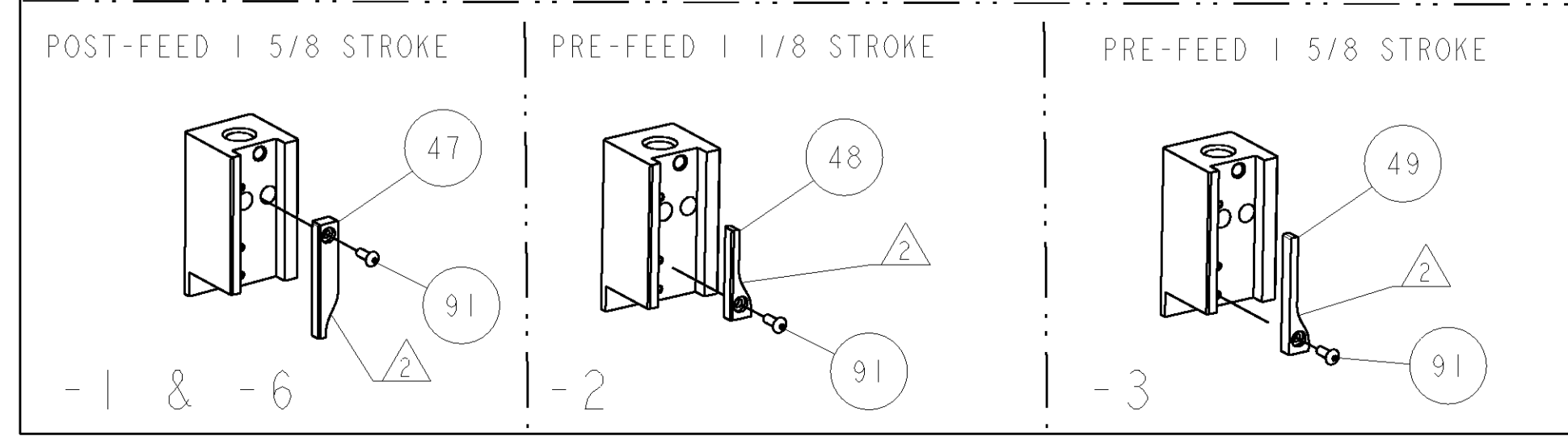
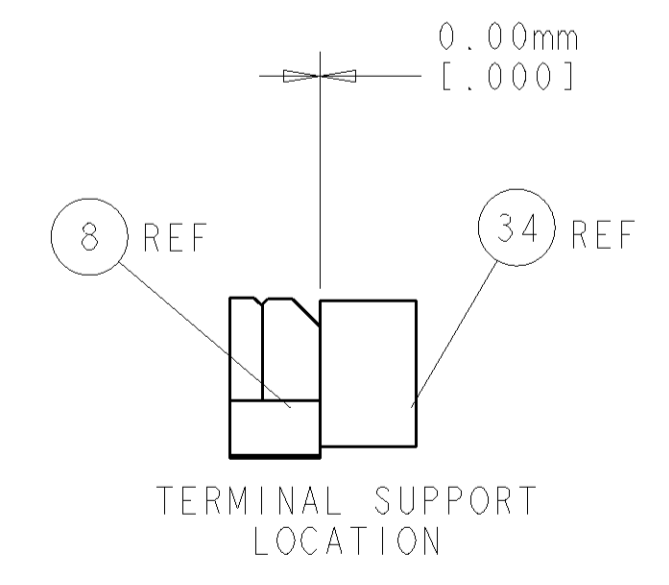
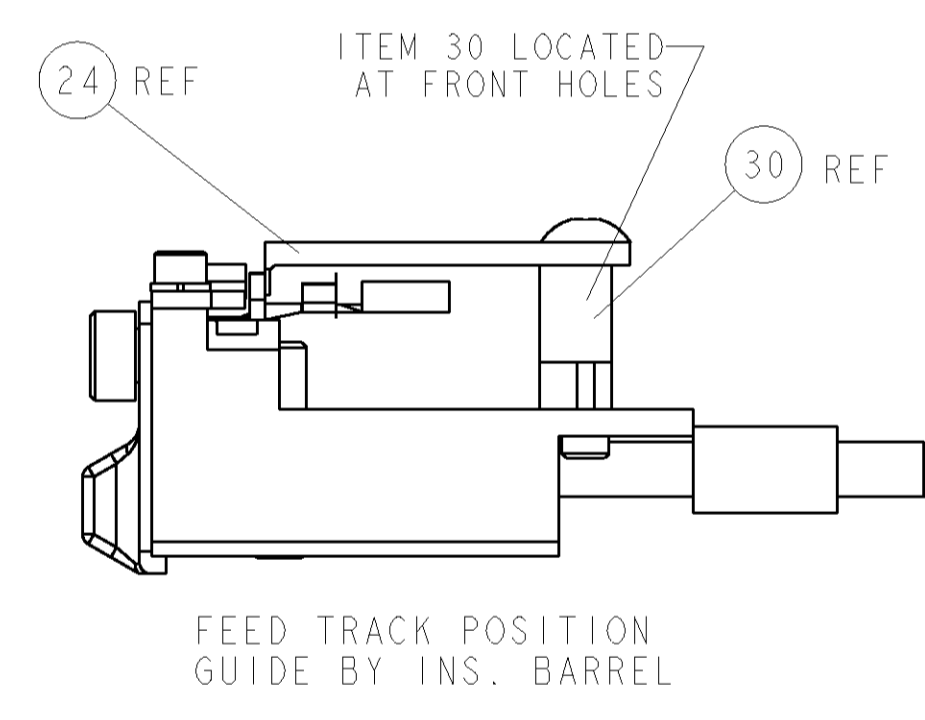
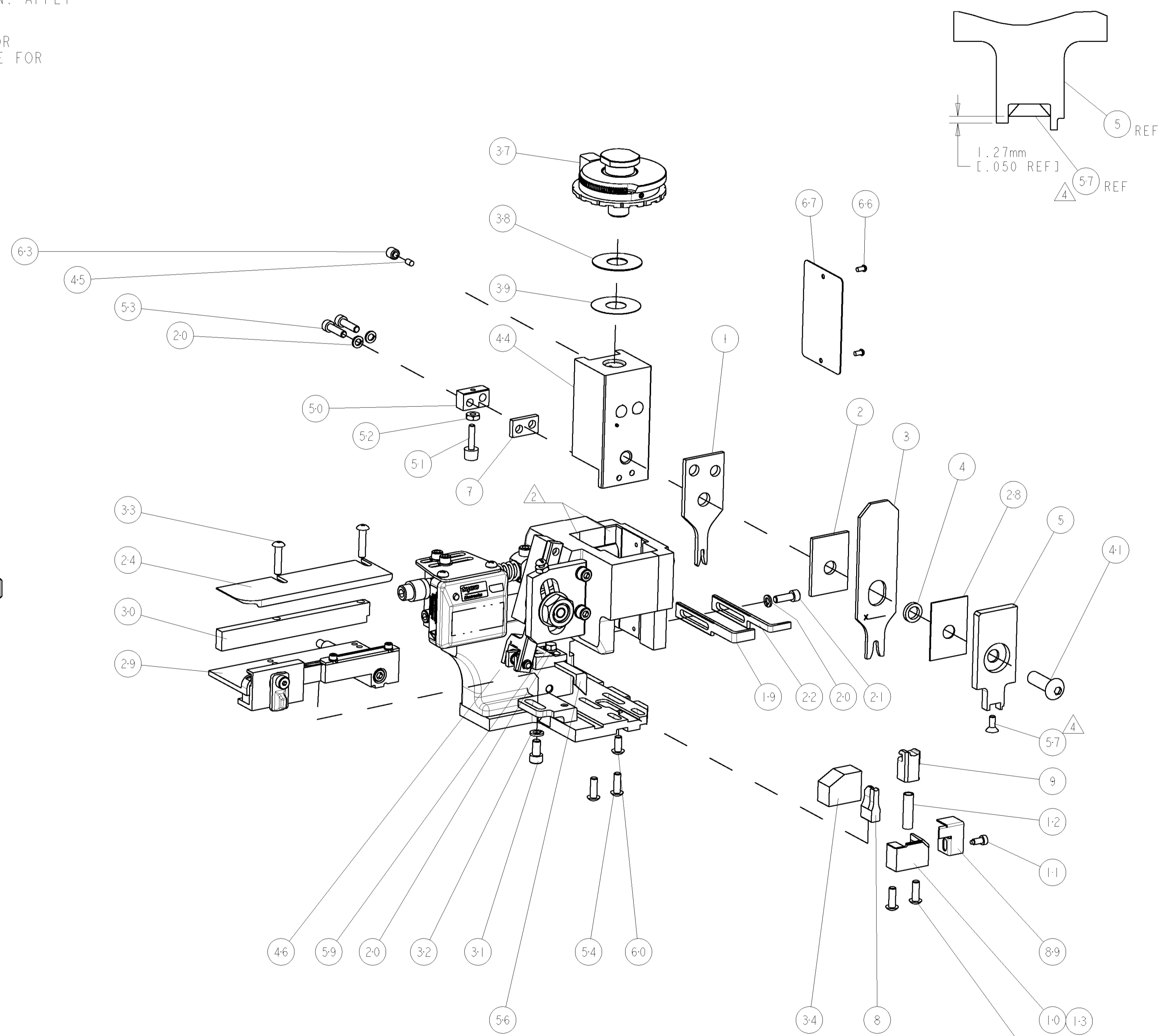


TERMINAL NAME: E TYPE			
TE P/N	YAZAKI P/N	YAZAKI TERMINAL - TE CRIMP SPECS	
1949641-1	7116-1530-08		
1949641-2	7116-1530	CRIMP HEIGHT	WIRE SIZE
-	-	1.24mm+0.05/-0.05 [0.049+0.002/-0.002]	0.85mm2
-	-	1.09mm+0.05/-0.05 [1.043+0.002/-0.002]	0.5mm2
-	-	0.99mm+0.05/-0.05 [1.039+0.002/-0.002]	0.3mm2
-	-	-	-
SEAL P/N	-	CRIMP	SIZE
1572988	7157-3791-60	WIRE	1.78mm [0.070]
-	-	INSUL	3.56mm [0.140]
WIRE STRIP LENGTH	TERM APPL SPEC	FEED	APPLICATOR INSTRUCTIONS
4.623-5.004	NONE	13.157	408-8040
-	-	-	SET UP GAGE
-	-	-	458637-1

LOC	DIST	REV	DESCRIPTION	DATE	DWN	APVD
A	66	A	RELEASED	19MAR2008	RK	TE

- △ RECOMMENDED SPARE PARTS
- △ GREASE LIGHTLY
- △ GUARD MUST BE IN PLACE WHEN OPERATING APPLICATOR IN A BENCH MACHINE
- △ APPLY TORO-SEAL IN ALLEN SOCKET TO FILL HOLE AFTER FLAT HD HAS BEEN ADJUSTED TO CORRECT HEIGHT AT QUALIFICATION. APPLY PN 1-23419-5 LOC-TITE TO THREADS.
- △ THE INSULATION RANGE LISTED IS FOR THE TERMINAL. THE INSULATION RANGE FOR THE SEAL IS Ø1.8-2.3mm.

*** WARNING**
ON INSTALLATION, SET WIRE DISC TO LARGEST WIRE SIZE SETTING. USE OF SETTINGS BELOW MIN. REQUIRED CRIMP HEIGHT SETTING WILL CAUSE DAMAGE TO CRIMP TOOLING.



△	-	-	-	REF	-	..	455749-1	GUARD WINDOW	116
△	-	-	-	REF	-	..	679532-1	INSERT, GUARD	115
-	-	-	-	-	-	-	1-21002-7	SCR, BTN SKT HD CAP 6-32 X .375	91
-	-	-	-	-	-	-	318563-1	GUARD, FRONT CHIP	89
-	-	-	-	-	-	-	4088040	SF APPL INST 408-8040	72
-	-	-	-	-	-	-	217238-1	GENERAL INSTRUCTION PKG	71
-	-	-	-	-	-	-	461264-5	PLATE, IDENTIFICATION	67
-	-	-	-	-	-	-	21017-2	SCREW, DRIVE	66
-	-	-	-	-	-	-	21009-2	SCR, SET, SELF LOCKING 1/4-20 X .250	63
-	-	-	-	-	-	-	22733-8	SCR, BHSC, SELF-LOCKING, 8-32 X .375	60
-	-	-	-	-	-	-	2-22603-0	SCR, HEX HD CAP 8-32 X .312	59
△	-	-	-	-	-	-	1-21003-9	SCR, FLT SKT HD CAP 6-32 X .375	57
-	-	-	-	-	-	-	458537-2	PAWL, FEED	56
-	-	-	-	-	-	-	2-21002-2	SCR, BTN SKT HD CAP 8-32 X .500	54
-	-	-	-	-	-	-	2-21000-8	SCR, SKT HD CAP 8-32 X .625	53
-	-	-	-	-	-	-	21018-5	NUT, HEX, REG 6-32	52
-	-	-	-	-	-	-	811242-2	BUMPER, HOLD DOWN	51
-	-	-	-	-	-	-	690753-1	SPACER, TONKER	50
-	-	-	-	-	-	-	690602-6	CAM, PRE FEED, 1 5/8	49
-	-	-	-	-	-	-	690602-5	CAM, PRE FEED, 1 1/8	48
-	-	-	-	-	-	-	690501-4	CAM, POST FEED, 1 5/8	47
-	-	-	-	-	-	-	459456-1	APPL. BASIC SUB ASSY (SIDE WISE MOCA)	46
-	-	-	-	-	-	-	690191-1	PLUG, NYLON	45
-	-	-	-	-	-	-	455673-1	RAM, SIDE FEED	44
-	-	-	-	-	-	-	7-21002-9	SCR, BTN SKT HD CAP 5/16-24 X 1.00	41
-	-	-	-	-	-	-	690125-1	SHIM SUB-ASSY	39
-	-	-	-	-	-	-	1-469367-2	SHIM	38
-	-	-	-	-	-	-	879103-2	FINE ADJUST HEAD ASSEMBLY	37
-	-	-	-	-	-	-	690786-3	TERMINAL SUPPORT	34
-	-	-	-	-	-	-	2-21002-4	SCR, BTN SKT HD CAP 8-32 X .750	33
-	-	-	-	-	-	-	21024-5	WASHER, SPRG LOCK, REG NO 10	32
-	-	-	-	-	-	-	3-21000-4	SCR, SKT HD CAP 10-32 X .375	31
-	-	-	-	-	-	-	1320908-1	SPACER, STRIP GUIDE	30
-	-	-	-	-	-	-	1633091-1	ASSEMBLY, STRIP GUIDE	29
-	-	-	-	-	-	-	455888-6	SPACER, CRIMPER	28
-	-	-	-	-	-	-	1320928-1	PLATE, STRIP GUIDE	24
-	-	-	-	-	-	-	690472-2	STRIPPER	22
-	-	-	-	-	-	-	2-21000-7	SCR, SKT HD CAP 8-32 X .500	21
-	-	-	-	-	-	-	21024-4	WASHER, SPRG LOCK, REG NO 8	20
-	-	-	-	-	-	-	690472-1	STRIPPER	19
△	-	-	-	-	-	-	679625-2	SHEAR HOLDER, FRONT (NO CUT)	13
-	-	-	-	-	-	-	3-22280-3	SPRING, COMPRESSION	12
-	-	-	-	-	-	-	690461-2	STOP, SHEAR	11
△	-	-	-	-	-	-	1-690459-0	SHEAR HOLDER, FRONT	10
△	-	-	-	-	-	-	318707-1	FLOATING SHEAR, FRONT	9
△	-	-	-	-	-	-	3-1633108-3	ANVIL, COMBINATION .070	8
-	-	-	-	-	-	-	240641-5	SPACER	7
-	-	-	-	-	-	-	-	-	6
-	-	-	-	-	-	-	318701-1	DEPRESSOR, SHEAR	5
-	-	-	-	-	-	-	1-238011-0	BLOCK, CRIMPER SPACER	4
△	-	-	-	-	-	-	5-683454-0	CRIMPER, INSULATION 0	3
△	-	-	-	-	-	-	2-455888-2	SPACER, CRIMPER	2
△	-	-	-	-	-	-	3-456404-5	CRIMPER, WIRE PREMIUM	1

DIMENSIONS:		TOLERANCES UNLESS OTHERWISE SPECIFIED:	
INCHES	0 PLC ±.001	1 PLC ±.001	2 PLC ±.001
	3 PLC ±.001	4 PLC ±.001	ANGLES ±.0001
MATERIAL	FINISH	WEIGHT	CUSTOMER DRAWING

DATE	BY	CHKD	APPVD	NAME	SCALE	SHEET	OF	REV
08MAR2008	R. KNEPPER	T. ELBIN	N. DEMING	FINE ADJUST SIDE FEED HDM APPLICATOR	3:5	1	1	A

CUSTOMER VIEWABLE ASSEMBLY