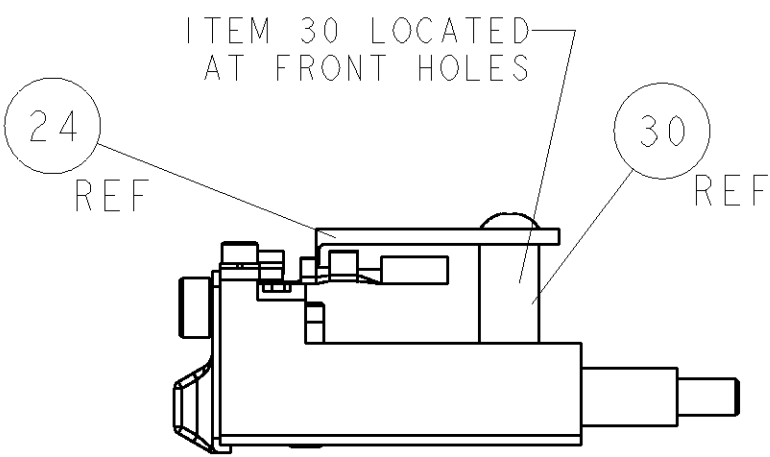
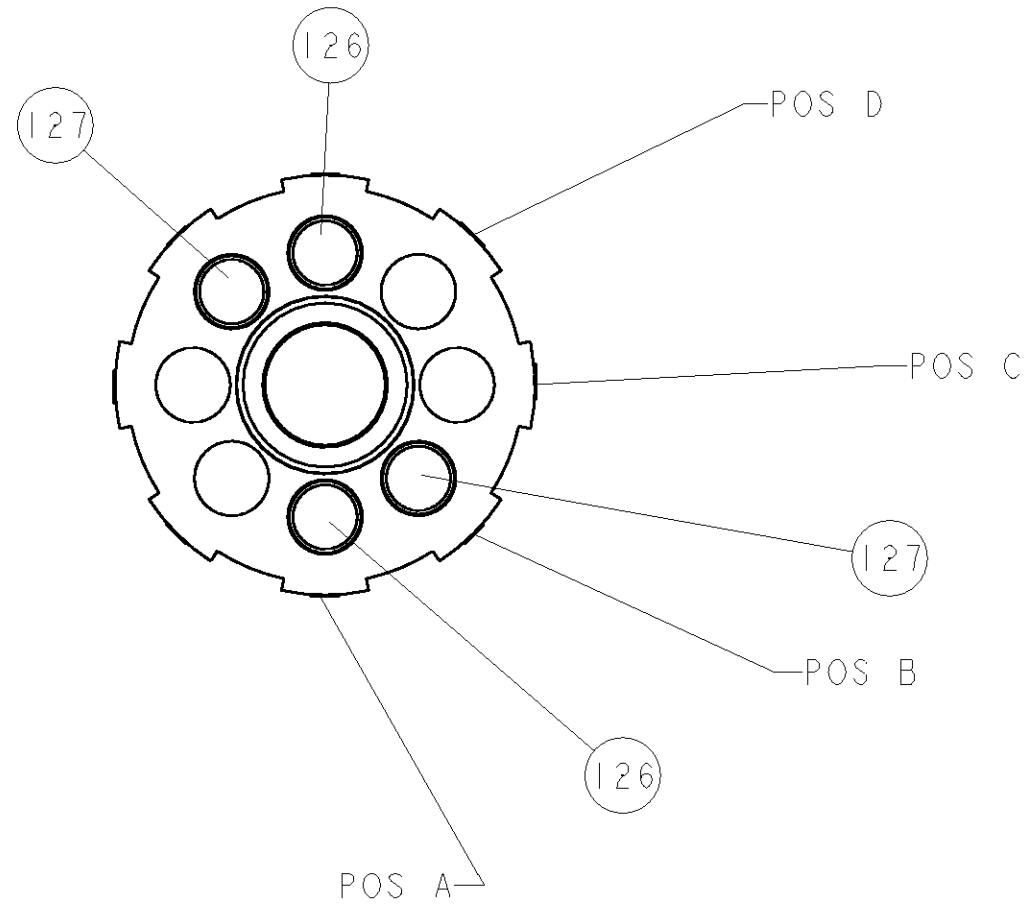
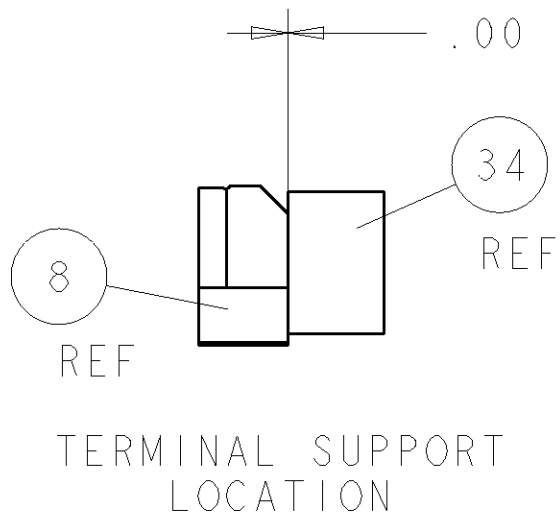


8				7			
THIS DRAWING IS UNPUBLISHED.				RELEASED FOR PUBLICATION			
COPYRIGHT 20				20			
BY TYCO ELECTRONICS CORPORATION. ALL RIGHTS RESERVED.							
PART NUMBER	REV	FIRST USED	POWER UNIT	FEED TYPE	DESCRIPTION		
1852238-1	A	122500-1	LEADMAKER	POST FEED	CUTS CARRIER		
1852238-2	A	565435-5	BENCH MODEL K	PRE FEED	CUTS CARRIER		
1852238-3	A	354500-1	BENCH MODEL G	PRE FEED	CUTS CARRIER		
1852238-6	A	122500-1	LEADMAKER	POST FEED	CONTINUOUS CARRIER		
7-1852238-7	A	-	-	-	SPARE PARTS		

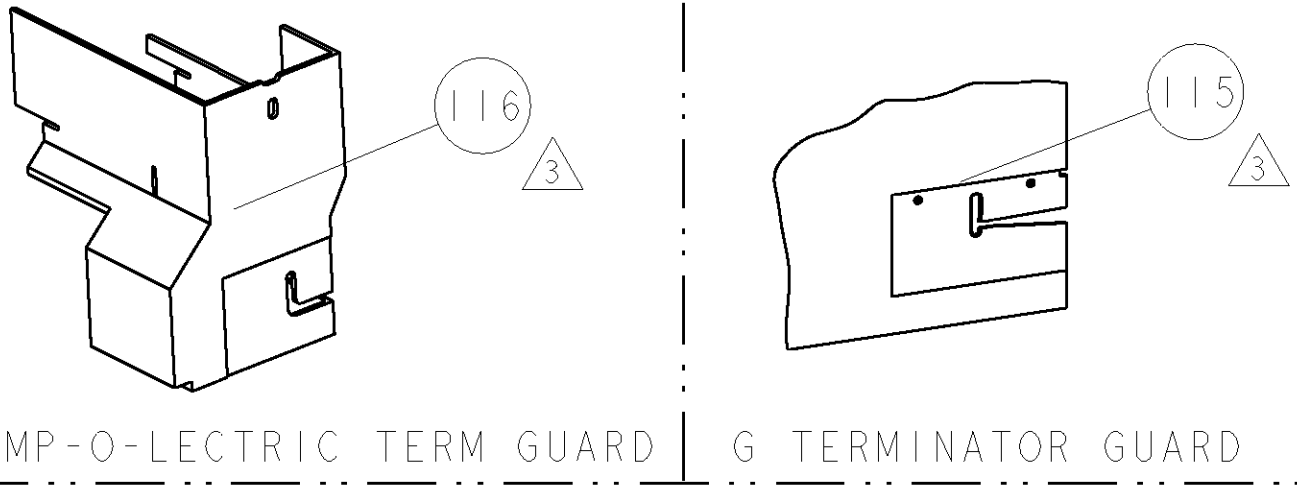
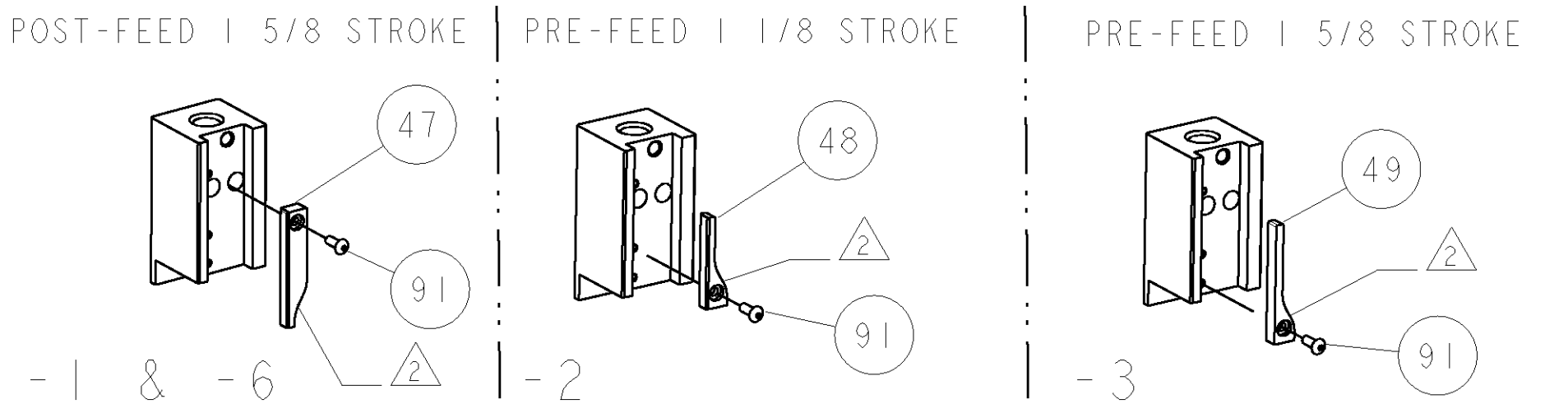
- 1 RECOMMENDED SPARE PARTS
2 GREASE LIGHTLY
3 GUARD MUST BE IN PLACE WHEN OPERATING APPLICATOR IN A BENCH MACHINE



FEED TRACK POSITION

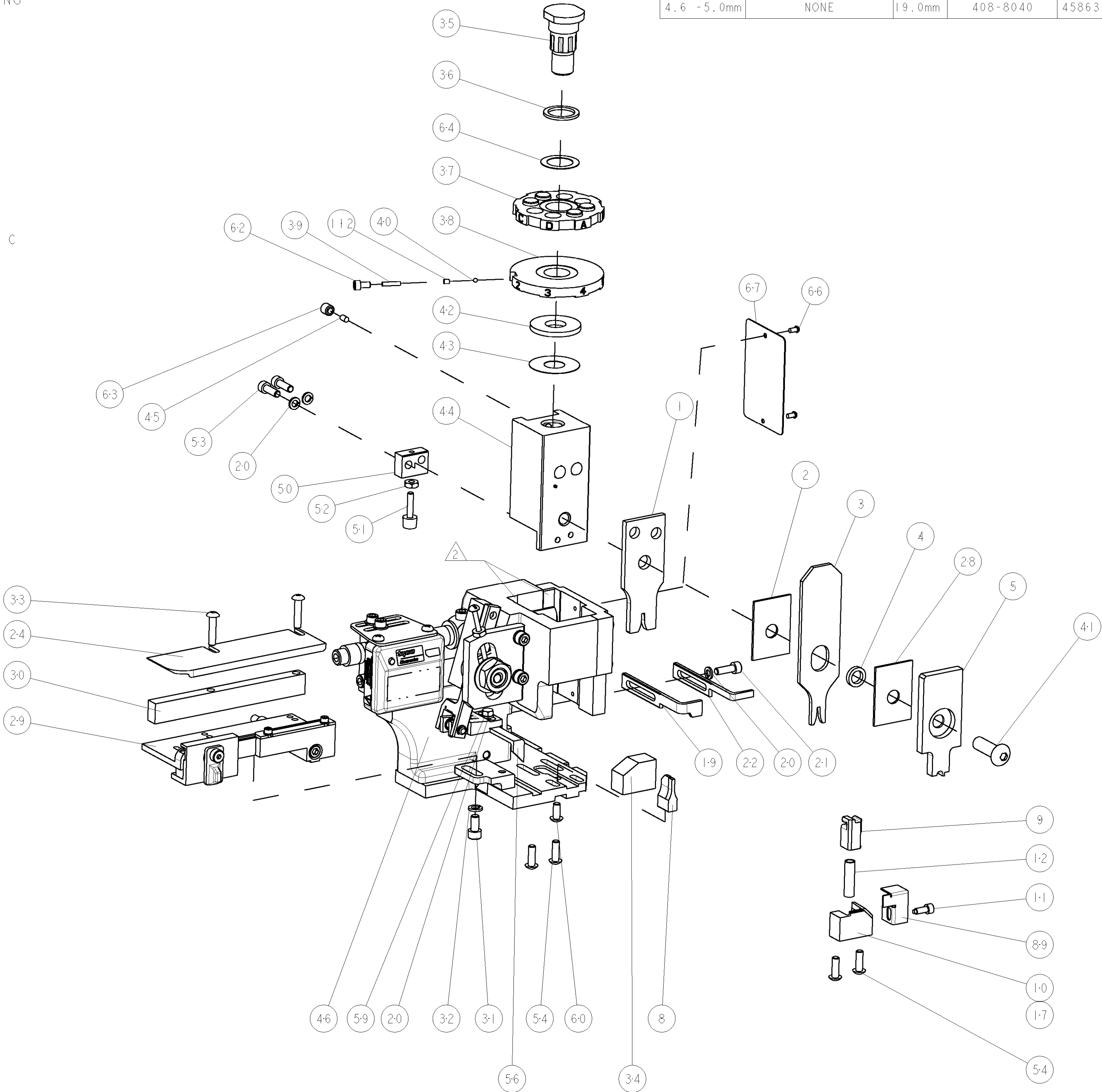


TERMINAL SUPPORT LOCATION




AMP-O-LECTRIC TERM GUARD G TERMINATOR GUARD

TERMINAL NAME: BLADE RCPT, RE					
AMP PN	MFR PN	MOLEX TERMINAL - CUSTOMER CRIMP SPECS			
1949014	F65B-14474-MB				
-	-	PAD LTR	CRIMP HEIGHT	WIRE SIZE	
-	-	A	1.30±0.05mm[.051±.002]	18 AWG	
-	-	B	1.15±0.05mm[.045±.002]	20 AWG	
-	-	C	-	-	
-	-	D	-	-	
-	-	CRIMP	SIZE	TYPE	RANGE
-	-	WIRE	1.88mm[.074]	F	18-20 AWG
-	-	INSUL	2.11mm[.083]	F	∅0.93mm max
WIRE STRIP LENGTH	TERM APPL SPEC	FEED	APPL INSTRUCTIONS	SET UP GAGE	
4.6 - 5.0mm	NONE	19.0mm	408-8040	458637-1	



-	2	2	2	2	-	3-354779-3	PIN, WIRE DISC, .3155	127
-	2	2	2	2	-	2-354779-1	PIN, WIRE DISC, .3095	126
-	-	-	REF	-	-	455749-1	GUARD WINDOW	116
-	-	REF	-	-	-	679532-1	INSERT, GUARD	115
-	1	1	1	1	-	690603-1	SPRING ASSIST AMP-O-MATOR APPLICATOR	112
-	1	1	1	1	-	1-21002-7	SCR, BTN SKT HD CAP 6-32 X .375	91
-	1	1	1	1	-	318563-1	GUARD, FRONT CHIP	89
-	1	1	1	1	-	4088040	SF APPL INST 408-8040	72
-	1	1	1	1	-	217238-1	GENERAL INSTRUCTION PKG	71
-	1	1	1	1	-	461264-1	PLATE, IDENTIFICATION	67
-	2	2	2	2	-	21017-2	SCREW, DRIVE	66
-	1	1	1	1	-	986950-1	WASHER, FLAT PRECISION	64
-	1	1	1	1	-	21009-2	SCR, SET, SELF LOCKING 1/4-20 X .250	63
-	1	1	1	1	-	23030-1	SCR, SKT HD CAP 6-32 x .25	62
-	1	1	1	1	-	22733-8	SCR, BHSC, SELF-LOCKING, 8-32 X .375	60
-	1	1	1	1	-	2-22603-0	SCR, HEX HD CAP 8-32 X .312	59
-	1	1	1	1	-	458537-2	PAWL, FEED	56
-	4	4	4	4	-	2-21002-2	SCR, BTN SKT HD CAP 8-32 X .500	54
-	2	2	2	2	-	2-21000-7	SCR, SKT HD CAP 8-32 X .500	53
-	1	1	1	1	-	21018-5	NUT, HEX, REG 6-32	52
-	1	1	1	1	-	811242-2	BUMPER, HOLD DOWN	51
-	1	1	1	1	-	690753-1	SPACER, TONKER	50
-	-	1	-	-	-	690602-6	CAM, PRE FEED, 1 5/8	49
-	-	-	1	-	-	690602-5	CAM, PRE FEED, 1 1/8	48
-	1	-	-	1	-	690501-4	CAM, POST FEED, 1 5/8	47
-	1	1	1	1	-	459456-1	APPL. BASIC SUB ASSY (SIDE WISE MOCA)	46
-	1	1	1	1	-	690191-1	PLUG, NYLON	45
-	1	1	1	1	-	455673-1	RAM, SIDE FEED	44
-	1	1	1	1	-	690125-1	SHIM SUB-ASSY	43
-	1	1	1	1	-	690124-1	WASHER, RAM (.115)	42
-	1	1	1	1	-	7-21002-9	SCR, BTN SKT HD CAP 5/16-24 X 1.00	41
-	1	1	1	1	-	23241-6	BALL, STEEL	40
-	1	1	1	1	-	690170-1	SPRING, COMPRESSION	39
-	1	1	1	1	-	690142-1	DISC, INSULATION	38
-	1	1	1	1	-	354777-1	WIRE DISC, ASSEMBLY	37
-	1	1	1	1	-	22480-5	SPRING, COMPRESSION	36
-	1	1	1	1	-	690212-1	POST, RAM	35
-	1	1	1	1	-	2-690786-3	TERMINAL SUPPORT	34
-	2	2	2	2	-	2-21002-4	SCR, BTN SKT HD CAP 8-32 X .750	33
-	1	1	1	1	-	21024-5	WASHER, SPRG LOCK, REG NO 10	32
-	1	1	1	1	-	3-21000-4	SCR, SKT HD CAP 10-32 X .375	31
-	1	1	1	1	-	1320908-8	SPACER, STRIP GUIDE	30
-	1	1	1	1	-	1633091-3	ASSEMBLY, STRIP GUIDE	29
-	1	1	1	1	-	1-455888-0	SPACER, CRIMPER	28
-	1	1	1	1	-	1320928-1	PLATE, STRIP GUIDE	24
-	1	-	-	1	-	690472-2	STRIPPER	22
-	1	1	1	1	-	2-21000-7	SCR, SKT HD CAP 8-32 X .500	21
-	4	4	4	4	-	21024-4	WASHER, SPRG LOCK, REG NO 8	20
-	-	1	1	-	-	691353-1	STRIPPER	19
-	1	-	-	-	-	679625-1	SHEAR HOLDER, FRONT (NO CUT)	17
-	1	1	1	1	-	3-22280-3	SPRING, COMPRESSION	12
-	1	1	1	1	-	690461-1	STOP, SHEAR	11
-	-	1	1	1	-	690459-1	SHEAR HOLDER, FRONT	10
-	1	1	1	1	-	1-454276-9	FLOATING SHEAR, FRONT	9
1	1	1	1	1	-	5-1633116-9	ANVIL, COMBINATION	8
-	1	1	1	1	-	1-455889-4	DEPRESSOR, SHEAR	5
-	1	1	1	1	-	238011-4	BLOCK, CRIMPER SPACER	4
1	1	1	1	1	-	8-1424909-2	CRIMPER, INSULATION F	3
-	1	1	1	1	-	1-455888-0	SPACER, CRIMPER	2
1	1	1	1	1	-	5-1633305-2	CRIMPER, WIRE PREMIUM	1
-77	-6	-3	-2	-1	U/M	PART NO	DESCRIPTION	ITEM NO

THIS IS A CUSTOMER DRAWING. IT IS THE CUSTOMER'S RESPONSIBILITY TO OBTAIN THE NECESSARY APPROVALS FOR THE USE OF THIS DRAWING IN THEIR OWN DESIGN. THE CUSTOMER SHALL BE RESPONSIBLE FOR THE PROTECTION OF THIS DRAWING FROM UNAUTHORIZED DISSEMINATION.				DRAWN BY: B. HIGMAN		05MAY2006		tyco		Tyco Electronics								
				CHECKED BY: R. KNEPPER		05MAY2006		Electronics		Harrisburg, PA 17105-3608								
<div>DIMENSIONS: INCHES</div> <div></div>				TOLERANCES UNLESS OTHERWISE SPECIFIED:		DRAWN BY: G. BAILEY		05MAY2006		NAME								
										SIDE FEED HDM APPLICATOR								
										PRODUCT SPEC								
										APPLICATION SPEC								
MATERIAL				FINISH		WEIGHT		SIZE		CAGE CODE	DRAWING NO	RESTRICTED TO						
-				-		-		A		00779	C=1852238	-						
						CUSTOMER DRAWING				SCALE		3:5	SHEET	1	OF	1	REV	A

Mouser Electronics

Authorized Distributor

Click to View Pricing, Inventory, Delivery & Lifecycle Information:

[TE Connectivity:](#)

[1852238-1](#)