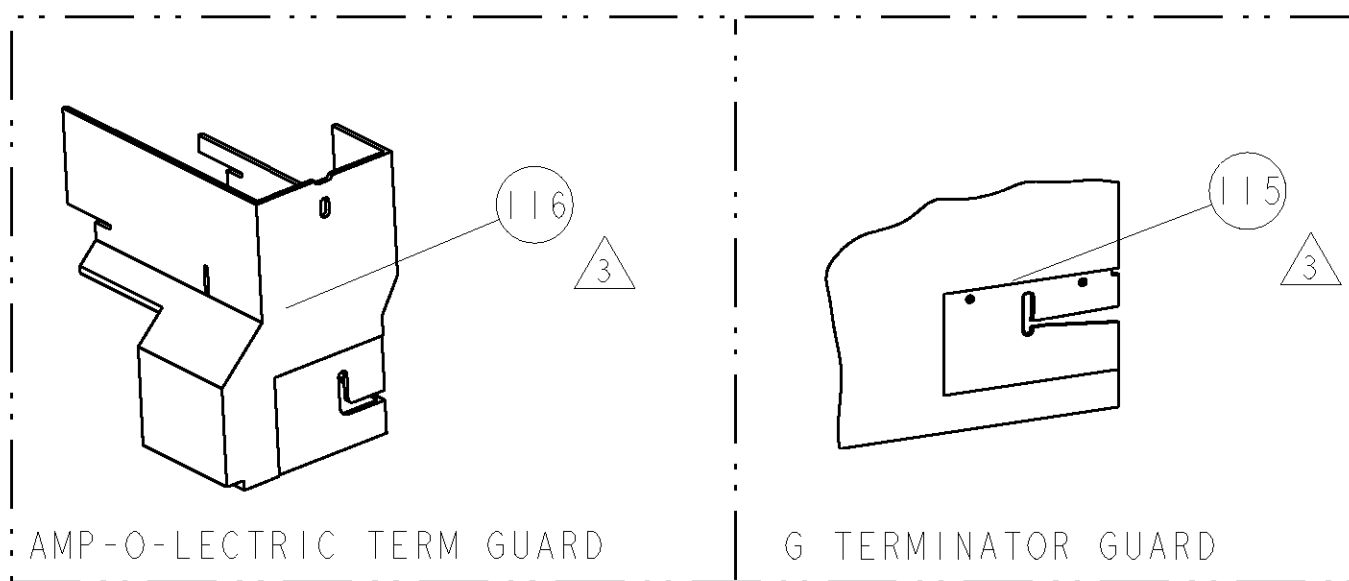
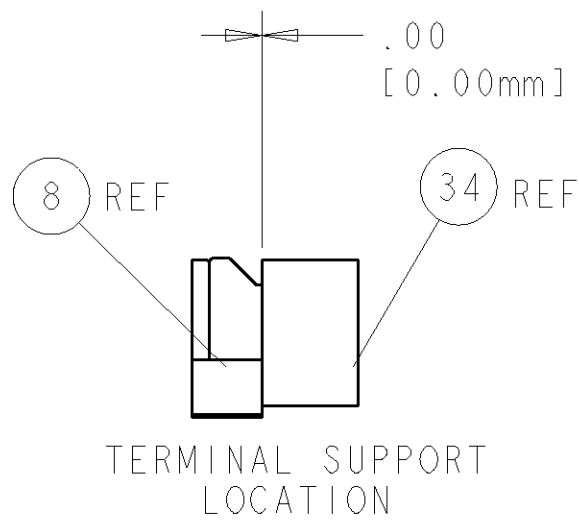
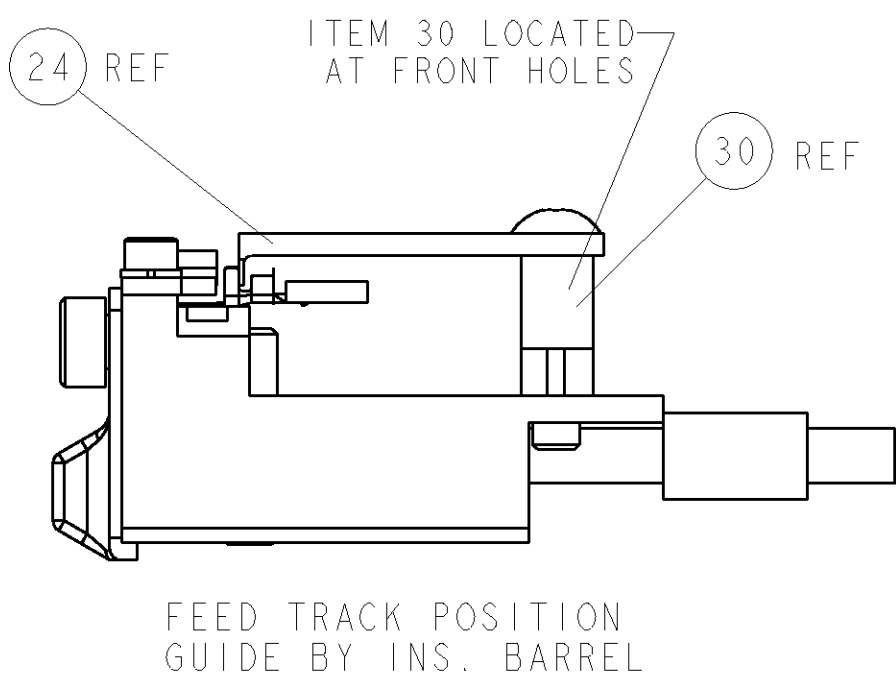
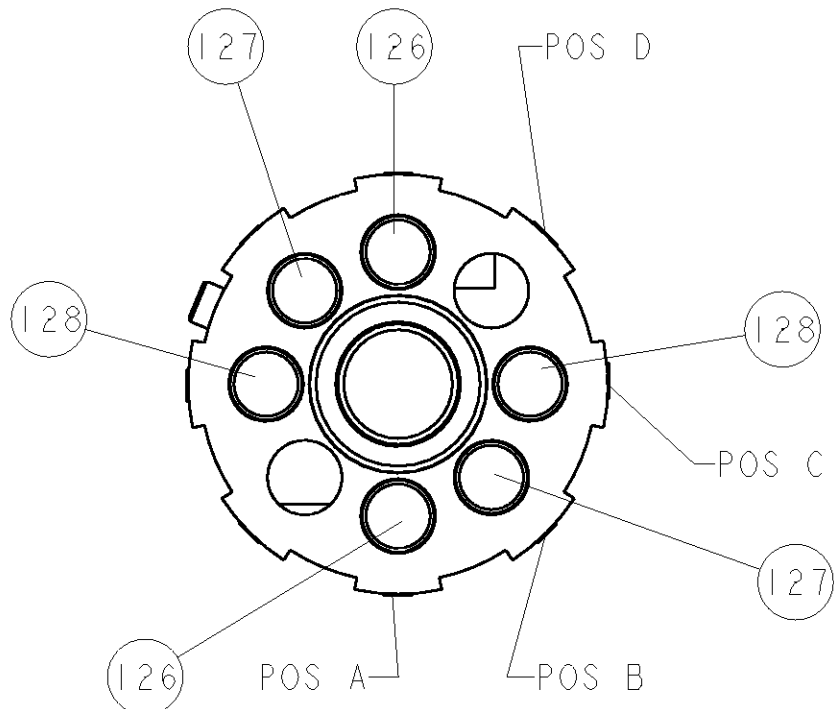
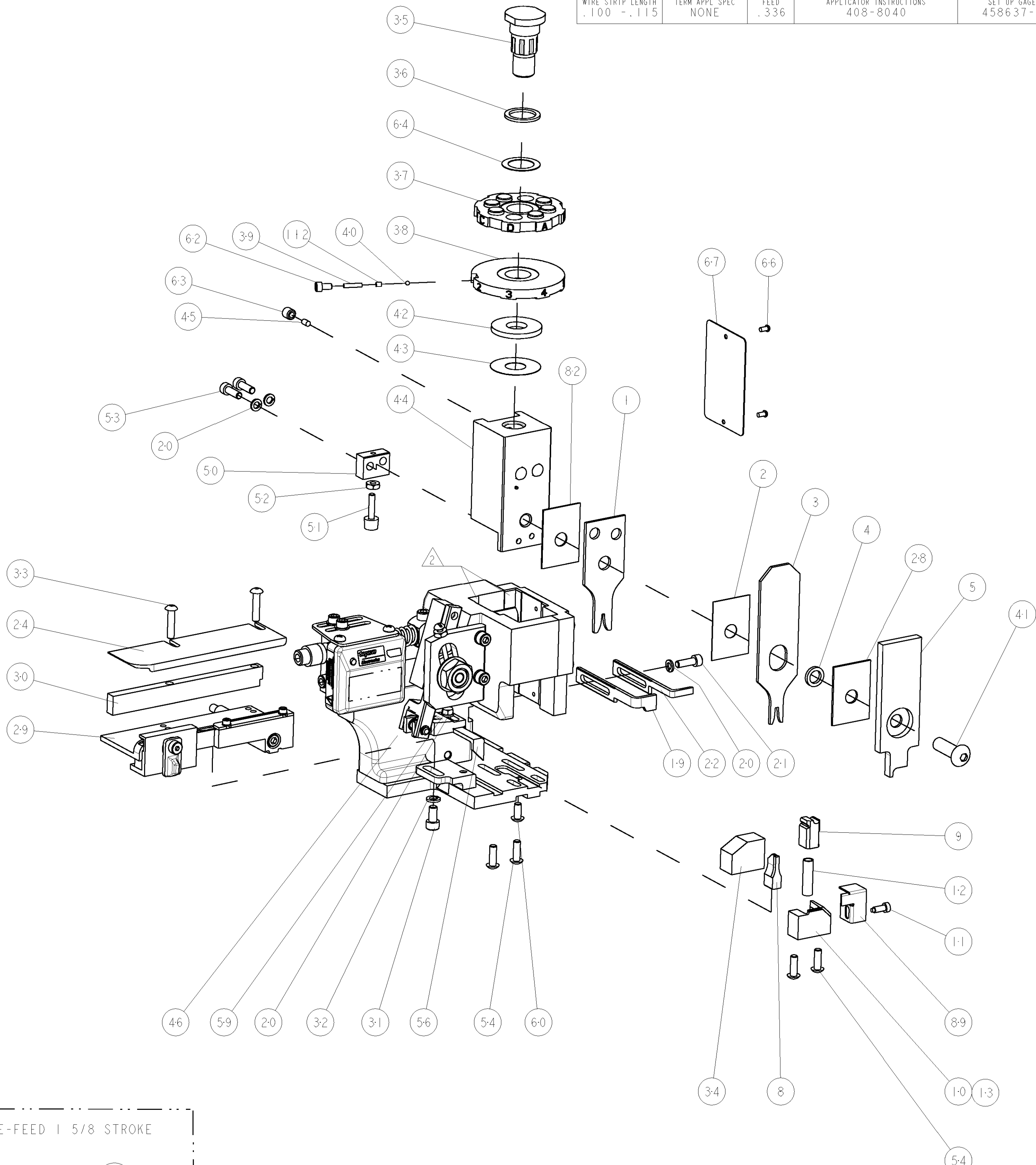


8				7			
THIS DRAWING IS UNPUBLISHED.				RELEASED FOR PUBLICATION			
COPYRIGHT 20				20			
BY TYCO ELECTRONICS CORPORATION. ALL RIGHTS RESERVED.							
PART NUMBER	REV	FIRST USED	POWER UNIT	FEED TYPE	DESCRIPTION		
1852571-1	A	122500-1	LEADMAKER	POST FEED	CUTS CARRIER		
1852571-2	A	565435-5	BENCH MODEL K	PRE FEED	CUTS CARRIER		
1852571-3	A	354500-1	BENCH MODEL G	PRE FEED	CUTS CARRIER		
1852571-6	A	122500-1	LEADMAKER	POST FEED	CONTINUOUS CARRIER		
7-1852571-7	A	-	-	-	SPARE PARTS		

- △ RECOMMENDED SPARE PARTS
△ GREASE LIGHTLY
△ GUARD MUST BE IN PLACE WHEN OPERATING APPLICATOR IN A BENCH MACHINE



TERMINAL NAME: HL MALE TERMINAL					
TE PN	MANF PN	JST TERMINAL - TE CRIMP SPECS			
1949522	SSF-21T-PI.4				
-	-	PAD LTR	CRIMP HEIGHT	WIRE SIZE	
-	-	A	.045±.002[1.14±0.05mm]	18 AWG	
-	-	B	.040±.002[1.02±0.05mm]	20 AWG	
-	-	C	.038±.002[.97±0.05mm]	22 AWG	
-	-	D	-	-	
-	-	CRIMP	SIZE	TYPE	RANGE
-	-	WIRE	.070 [1.78mm]	F	18-22 AWG
-	-	INSUL	.100 [2.54mm]	F	.059-.087
WIRE STRIP LENGTH	TERM APPL SPEC	FEED	APPLICATOR INSTRUCTIONS		SET UP GAGE
.100 -.115	NONE	.336	408-8040		458637-1



3 S	-	2	2	2	2	-	3-354779-5	PIN, WIRE DISC, .3165	128
	-	2	2	2	2	-	3-354779-1	PIN, WIRE DISC, .3145	127
	-	2	2	2	2	-	2-354779-1	PIN, WIRE DISC, .3095	126
-	-	-	REF	-	..	455749-1	GUARD WINDOW	116	
-	-	-	REF	-	..	679532-1	INSERT, GUARD	115	
-	-	1	1	1	1	-	690603-1	SPRING ASSIST AMP-O-MATOR APPLICATOR	112
-	-	1	1	1	1	-	1-21002-7	SCR, BTN SKT HD CAP 6-32 X .375	91
-	-	1	1	1	1	-	318563-1	GUARD, FRONT CHIP	89
-	-	1	1	1	1	-	455888-7	SPACER, CRIMPER	82
-	-	1	1	1	1	-	4088040	SF APPL INST 408-8040	72
-	-	1	1	1	1	-	217238-1	GENERAL INSTRUCTION PKG	7
-	-	1	1	1	1	-	461264-1	PLATE, IDENTIFICATION	6
-	-	2	2	2	2	-	21017-2	SCREW, DRIVE	66
-	-	1	1	1	1	-	986950-1	WASHER, FLAT PRECISION	64
-	-	1	1	1	1	-	21009-2	SCR, SET, SELF LOCKING 1/4-20 X .250	63
-	-	1	1	1	1	-	23030-1	SCR, SKT HD CAP 6-32 x .25	62
-	-	1	1	1	1	-	22733-8	SCR, BHSC, SELF-LOCKING, 8-32 X .375	60
-	-	1	1	1	1	-	2-22603-0	SCR, HEX HD CAP 8-32 X .312	59
-	-	1	1	1	1	-	458537-2	PAWL, FEED	56
-	-	4	4	4	4	-	2-21002-2	SCR, BTN SKT HD CAP 8-32 X .500	54
-	-	2	2	2	2	-	2-21000-7	SCR, SKT HD CAP 8-32 X .500	53
-	-	1	1	1	1	-	21018-5	NUT, HEX, REG 6-32	52
-	-	1	1	1	1	-	811242-2	BUMPER, HOLD DOWN	51
-	-	1	1	1	1	-	690753-1	SPACER, TONKER	50
-	-	-	1	-	-	..	690602-6	CAM, PRE FEED, 1 5/8	49
-	-	-	-	1	-	..	690602-5	CAM, PRE FEED, 1 1/8	48
-	-	1	-	-	1	-	690501-4	CAM, POST FEED, 1 5/8	47
-	-	1	1	1	1	-	459456-1	APPL. BASIC SUB ASSY (SIDE WISE MOCA)	46
-	-	1	1	1	1	-	690191-1	PLUG,NYLON	45
-	-	1	1	1	1	-	455673-1	RAM, SIDE FEED	44
-	-	1	1	1	1	-	690125-1	SHIM SUB-ASSY	43
-	-	1	1	1	1	-	1-690124-4	WASHER, RAM (.120)	42
-	-	1	1	1	1	-	7-21002-9	SCR, BTN SKT HD CAP 5/16-24 X 1.00	41
-	-	1	1	1	1	-	23241-6	BALL, STEEL	40
-	-	1	1	1	1	-	690170-1	SPRING, COMPRESSION	39
-	-	1	1	1	1	-	690142-1	DISC, INSULATION	38
-	-	1	1	1	1	-	354777-1	WIRE DISC, ASSEMBLY	37
-	-	1	1	1	1	-	22480-5	SPRING, COMPRESSION	36
-	-	1	1	1	1	-	690212-1	POST, RAM	35
-	-	1	1	1	1	-	690786-3	TERMINAL SUPPORT	34
-	-	2	2	2	2	-	2-21002-4	SCR, BTN SKT HD CAP 8-32 X .750	33
-	-	1	1	1	1	-	21024-5	WASHER, SPRG LOCK, REG NO 10	32
-	-	1	1	1	1	-	3-21000-4	SCR, SKT HD CAP 10-32 X .375	31
-	-	1	1	1	1	-	1-1320908-5	SPACER, STRIP GUIDE	30
-	-	1	1	1	1	-	1633091-1	ASSEMBLY, STRIP GUIDE	29
-	-	1	1	1	1	-	1-455888-0	SPACER, CRIMPER	28
-	-	1	1	1	1	-	1320928-1	PLATE, STRIP GUIDE	24
-	-	1	-	-	1	-	690472-2	STRIPPER	22
-	-	1	1	1	1	-	2-21000-7	SCR, SKT HD CAP 8-32 X .500	21
-	-	4	4	4	4	-	21024-4	WASHER, SPRG LOCK, REG NO 8	20
-	-	-	1	1	-	-	691353-1	STRIPPER	19
1	-	-	-	-	-	-	679625-1	SHEAR HOLDER, FRONT (NO CUT)	13
-	-	1	1	1	1	-	3-22280-3	SPRING, COMPRESSION	12
-	-	1	1	1	1	-	690461-1	STOP, SHEAR	11
-	-	-	1	1	1	-	690459-1	SHEAR HOLDER, FRONT	10
-	-	1	1	1	1	-	462006-1	FLOATING SHEAR, FRONT	9
1	1	1	1	1	1	-	4-1633535-6	ANVIL, COMBINATION	8
-	-	-	-	-	-	..	-	-	7
-	-	-	-	-	-	..	-	-	6
-	-	1	1	1	1	-	2-455889-0	DEPRESSOR, SHEAR	5
-	-	1	1	1	1	-	238011-7	BLOCK, CRIMPER SPACER	4
1	1	1	1	1	1	-	1213077-4	CRIMPER, INSULATION PREMIUM	3
-	-	1	1	1	1	-	455888-3	SPACER, CRIMPER	2
1	1	1	1	1	1	-	4-456404-6	CRIMPER, WIRE PREMIUM	1

Mouser Electronics

Authorized Distributor

Click to View Pricing, Inventory, Delivery & Lifecycle Information:

[TE Connectivity:](#)

[1852571-6](#)