

Flush-type connector - SACC-DSI-M8FS-5CON-M10-L90 DN - 1424239

Please be informed that the data shown in this PDF Document is generated from our Online Catalog. Please find the complete data in the user's documentation. Our General Terms of Use for Downloads are valid (<http://phoenixcontact.com/download>)




Sensor/actuator flush-type connector, socket, 5-pos., DeviceNet™, M8, rear/screw mounting with M10 fastening thread, with angled solder connection

Why buy this product

- ✓ Easy PCB assembly: one-piece connectors for wave soldering
- ✓ For high transmission reliability: optional shield connection to the housing and latching on the PCB



Key Commercial Data

Packing unit	1 STK
GTIN	 4 046356 712514
GTIN	4046356712514
Weight per Piece (excluding packing)	0.600 g
Custom tariff number	85366990
Country of origin	Germany

Technical data

Ambient conditions

Ambient temperature (operation)	-25 °C ... 85 °C
Degree of protection	IP67

General

Rated current at 40°C	3 A
Rated voltage	30 V AC
	30 V DC
Number of positions	5

Flush-type connector - SACC-DSI-M8FS-5CON-M10-L90 DN - 1424239

Technical data

General

Insulation resistance	≥ 100 MΩ
Coding	B - inverse
Standards/regulations	M8 connector IEC 61076-2-104
Status display	No
Overvoltage category	II
Degree of pollution	3
Connection method	Solder pins
Mounting type	Rear mounting M10 With flat nut

Material

Flammability rating according to UL 94	HB
Contact material	Cu alloy
Contact surface material	Au
Contact carrier material	PA 66
Material, knurls	Zinc die-cast, nickel-plated

Cable

Standards/specifications	M8 connector IEC 61076-2-104
--------------------------	------------------------------

Standards and Regulations

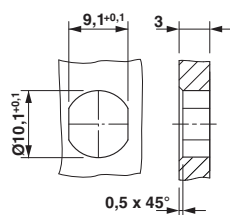
Standard designation	M8 connector
Standards/regulations	IEC 61076-2-104
Flammability rating according to UL 94	HB

Environmental Product Compliance

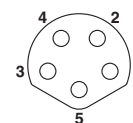
China RoHS	Environmentally Friendly Use Period = 50
	For details about hazardous substances go to tab "Downloads", Category "Manufacturer's declaration"

Drawings

Dimensional drawing



Schematic diagram

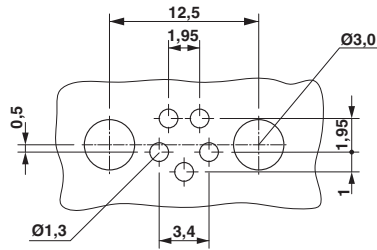


connector pin assignment of M8 socket, 4-pos., view of pin side

Housing cutout for M8 flush-type connector, socket, one-section

Flush-type connector - SACC-DSI-M8FS-5CON-M10-L90 DN - 1424239

Drilling diagram



Drilling diagram

Approvals

Approvals

Approvals

EAC

Ex Approvals

Approval details

EAC B.01742
