

Honeywell
M I C R O

SWITCH-ENCLOSED

CATALOGUE LISTING
ENI SERIES
CHART 7

—THIRD ANGLE PROJECTION

ENI SERIES
CHART 7

M

DRAWING NUMBER

2

1555

CHECK

REVISIONS
2 10 13 A
T. C. (6/67)
2 10 13 B
T. C. (7/71)

CHECK

J. M.

11. 5. 70.

TRAVEL

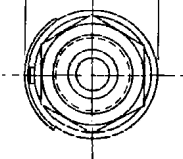
8. 5. 70.

T. C.

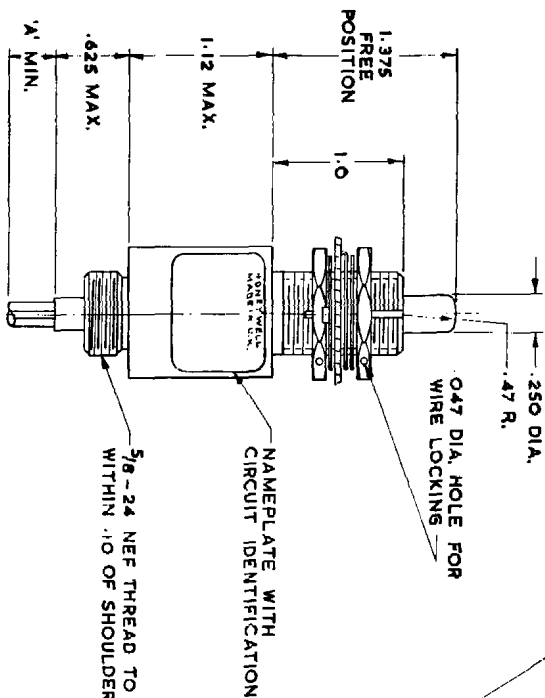
DRAWN		CHECKED		DATE	
8. 5. 70.		J. M.		11. 5. 70.	
OPERATING FORCE MULT. OPERATIONS: 4 LB. MAX. RELEASE FORCE PRETRAVEL DIFFERENTIAL TRAVEL OVERTRAVEL		ELECTRICAL DATA CONTACT ARRANGEMENT (2) S. P. D. T. BREAK D. STAGE (2) .010 MIN. RATING IN AMPERES SEA LEVEL 100,000 FT INFIN. RESIND. MOTOR INFIN. RESIND. MOTOR		SCALE 1:1 UNLESS OTHERWISE SPECIFIED DIMENSIONS IN INCHES TOLERANCES ARE ONE PLACE (1.0) .015 TWO PLACE (1.00) .005 THREE PLACE (1.000) .005 WEIGHT SEE NOTE 6	
30 LB. MAX. 4 LB. MIN. .040 MAX. .020 MAX. .250 MIN.		CONTRACT ARRANGEMENT (2) S. P. D. T. BREAK D. STAGE (2) .010 MIN. RATING IN AMPERES SEA LEVEL 100,000 FT INFIN. RESIND. MOTOR INFIN. RESIND. MOTOR		UNLESS OTHERWISE SPECIFIED DIMENSIONS IN INCHES TOLERANCES ARE ONE PLACE (1.0) .015 TWO PLACE (1.00) .005 THREE PLACE (1.000) .005 WEIGHT SEE NOTE 6	
28 VOLTS DC		24		5	
24		5		3	
5		3		4	
3		4		4	
4		4		4	

HONEYWELL LTD., SLOUGH, BUCKS. & NEWHOUSE, LAKESHIRE.

1.070 MAX. DIA.



.250 DIA.
.47 R.



.072 WIDE X .038 DEEP KEYWAY TO WITHIN .250 OF SHOULDER

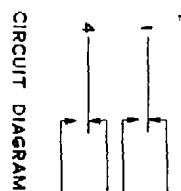
CORROSION RESISTANT STEEL PLUNGER AND BUSHING
5/8-24 NEF THREAD TO WITHIN .125 OF SHOULDER
(2) HEX NUT .812 ACROSS FLATS X .125 THICK
CORROSION RESISTANT STEEL KEYS WASHER .87 DIA. X .031 THICK, TAB .110 WIDE MOUNTING PANEL
CORROSION RESISTANT STEEL INTERNAL TOOTH LOCKWASHER (2) .87 DIA. X .022 REF. THICK
CORROSION RESISTANT STEEL CONDUIT FITTING

(6) NO20 FLEXEGLAS WIRE LEAD TO EL.2011 MARKED WITH CIRCUIT IDENTIFICATION AND WIRE GAUGE (1-20, 2-20 ETC)

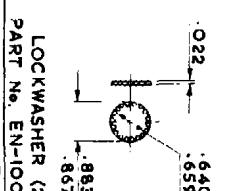
NOTE:-

- 1-ENCLOSURE FINISHED WITH GREEN EPOXY BASED ENAMEL
- 2-MATING RECEPTICLE FOR CONDUIT ASSEMBLY SUPPLIED BY SUPERFLEXIT LTD., SLOUGH AS PART No. 0090-09-001-17.
- 3-CONTACTS OPEN AND CLOSE WITHIN .010 PLUNGER TRAVEL
- 4-END OF WIRES ARE SOLDER DIPPED
- 5-CATALOGUE LISTING — STAMPED ON SIDE OF SWITCH
- 6-WEIGHT OF SWITCH IS 0.23 LBS. MAX., CABLE ONLY IS .0085 LBS. MAX. PER FOOT

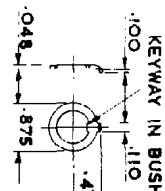
CATALOGUE LISTING	REL. No.	ISSUE	DIMENSION 'A' MIN.
ENI-15BN111	MS-10020	2	180.00



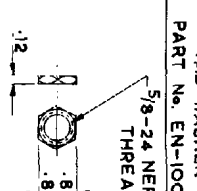
CIRCUIT DIAGRAM



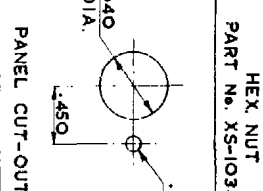
LOCKWASHER (2)
PART No. EN-10013



TAB WASHER
PART No. EN-10088



HEX NUT
PART No. XS-10349



PANEL CUT-OUT