

4

3

2

1


THIS DRAWING IS UNPUBLISHED. RELEASED FOR PUBLICATION  
© COPYRIGHT ALL RIGHTS RESERVED.

LOC	DIST	REVISIONS					
		P	LTR	DESCRIPTION	DATE	DWN	APVD
			A1	ECR-16-009822	14JUL2016	GK	SD

# REPLACED BY OCEAN STYLE APPLICATOR PART NUMBER 2266990-1

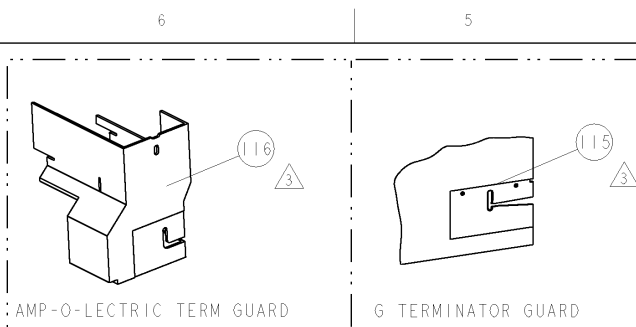
FOR REPLACEMENT PARTS FOR APPLICATOR 1852845  
REFER TO ADDITIONAL PAGE(S). SPARE PARTS KIT (IF LISTED)  
WILL REMAIN AVAILABLE.

THE REPLACEMENT OCEAN STYLE APPLICATOR HAS THE  
SAME TERMINATOR/PRESS INTERFACE AS APPLICATOR  
1852845

THIS DRAWING IS A CONTROLLED DOCUMENT.		DWN	GOPALAKRISHNA HV		 TE Connectivity
DIMENSIONS:		CHK	GOPALAKRISHNA HV		
TOLERANCES UNLESS OTHERWISE SPECIFIED:		APVD	STOUGH DALE		NAME SIDE FEED HDM APPLICATOR
0 PLC ±		PRODUCT SPEC			
1 PLC ±		APPLICATION SPEC			SIZE A3
2 PLC ±		WEIGHT	CAGE CODE	DRAWING NO	
3 PLC ±		MATERIAL	FINISH	C- 1852845	
4 PLC ±				CUSTOMER DRAWING	
ANGLES ±				REV	A1

PART NUMBER	REV	FIRST USED	POWER UNIT	FEED TYPE	DESCRIPTION
1852845-1	A	122500-1	LEADMAKER	POST FEED	CUTS CARRIER
1852845-2	A	565435-5	BENCH MODEL K	PRE FEED	CUTS CARRIER
1852845-3	A	354500-1	BENCH MODEL G	PRE FEED	CUTS CARRIER
1852845-6	A	122500-1	LEADMAKER	POST FEED	CONTINUOUS CARRIER
7-1852845-7	A	-	-	-	SPARE PARTS

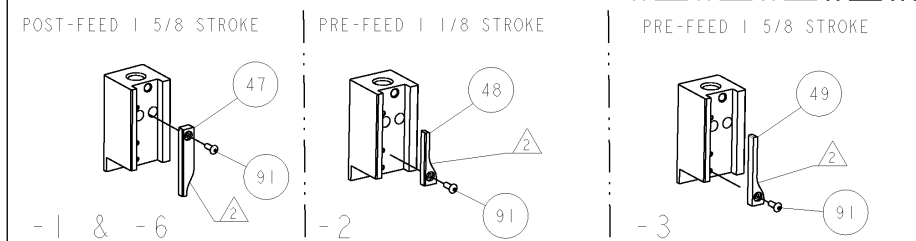
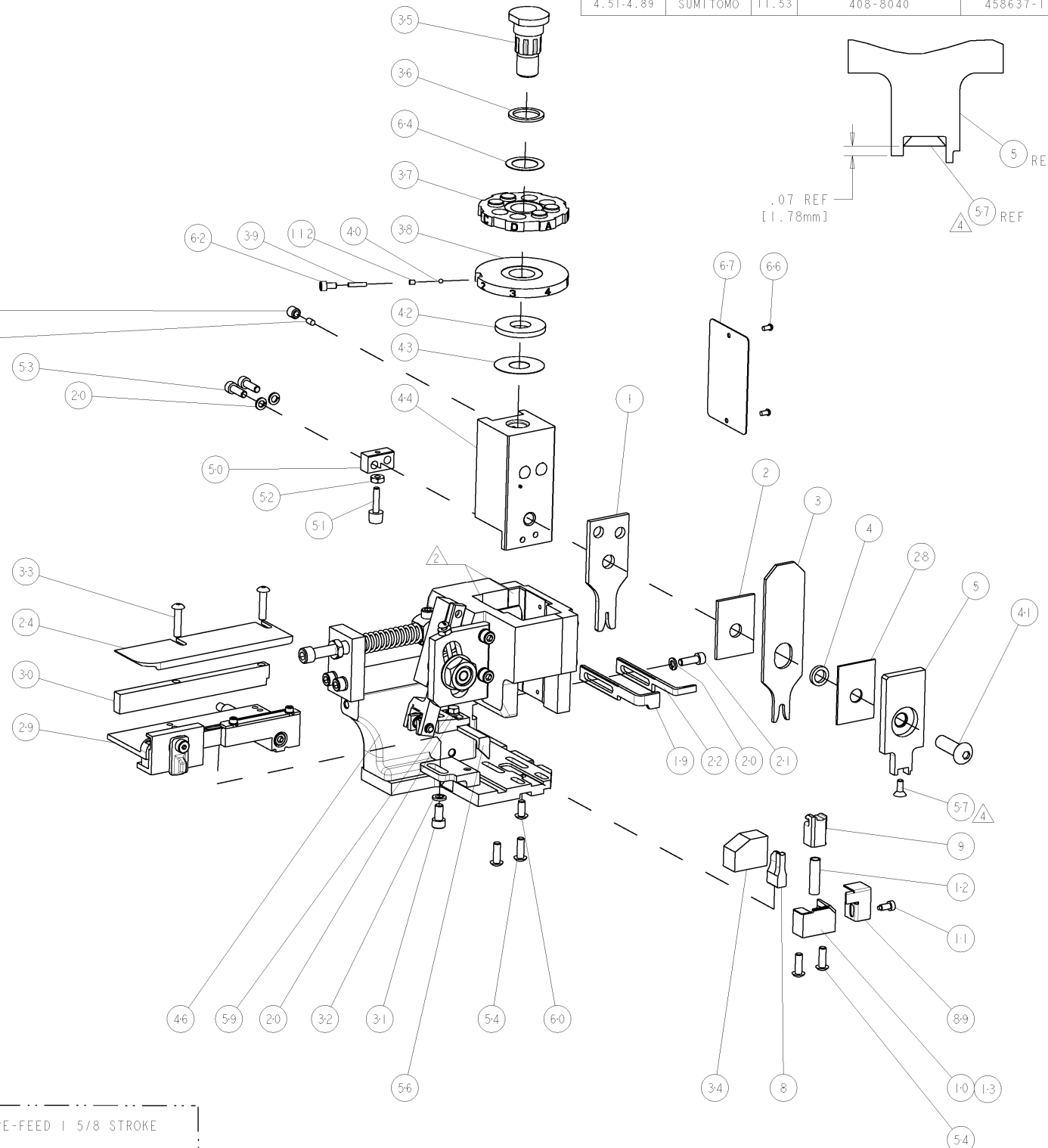
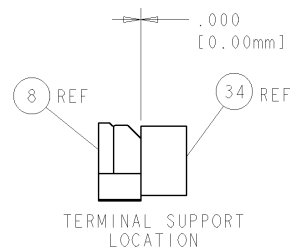
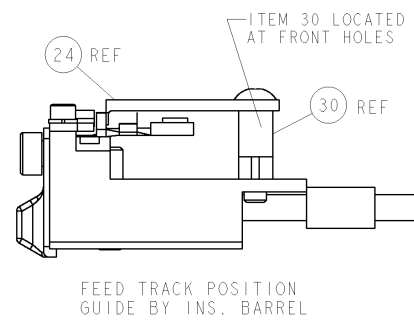
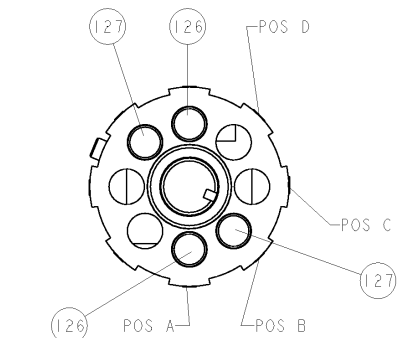
- △ RECOMMENDED SPARE PARTS
- △ GREASE LIGHTLY
- △ GUARD MUST BE IN PLACE WHEN OPERATING APPLICATOR IN A BENCH MACHINE
- △ APPLY TORO-SEAL IN ALLEN SOCKET TO FILL HOLE AFTER FLAT HD HAS BEEN ADJUSTED TO CORRECT HEIGHT AT QUALIFICATION. APPLY PN 1-23419-5 LOC-TITE TO THREADS.
- △ THE INSULATION RANGE LISTED IS FOR THE TERMINAL. THE INSULATION RANGE FOR THE SEAL IS Ø1.5-1.9mm



TE PN	SUMITOMO	SUMITOMO TERM - SUMITOMO CRIMP SPECS		
1949967	8240-0263			
-	-	PAD LTR		
-	-	CRIMP HEIGHT		
-	-	WIRE SIZE		
-	-	A 1.05mm ± .05/- .05 [ .041 ± .002/- .002 ]		
-	-	B .95mm ± .05/- .05 [ .037 ± .002/- .002 ]		
-	-	C		
-	-	D		
-	-	CRIMP		
-	-	SIZE		
-	-	TYPE		
-	-	RANGE		
SEAL PN	-	-		
1572860	7165-0473	WIRE 1.60mm [ .063 ]		
-	-	INSUL 3.76mm [ .148 ]		
-	-	F 0.30-0.50mm2		
-	-	O Ø3.300 MAX		
WIRE STRIP LENGTH	TERM APPL SPEC	FEED	APPLICATOR INSTRUCTIONS	SET UP GAGE
4.51-4.89	SUMITOMO	11.53	408-8040	458637-1

LOC	DIST	REV	DESCRIPTION	DATE	OWN	APPV
A	66		RELEASED	12MAY2009	MEH	TE

QTY	REV	DESCRIPTION	ITEM NO				
- 2	2	2	2	-	3-354779-8	PIN, WIRE DISC, .3180	127
- 2	2	2	2	-	2-354779-7	PIN, WIRE DISC, .3125	126
-	-	REF	-	...	455749-1	GUARD WINDOW	116
-	-	REF	-	...	679532-1	INSERT, GUARD	115
-	1	1	1	-	690603-1	SPRING ASSIST AMP-O-MATOR APPLICATOR	112
-	1	1	1	-	1-21002-7	SCR, BTN SKT HD CAP 6-32 X .375	91
-	1	1	1	-	318563-1	GUARD, FRONT CHIP	89
-	1	1	1	-	4088040	SF APPL INST 408-8040	72
-	1	1	1	-	217238-1	GENERAL INSTRUCTION PKG	71
-	1	1	1	-	461264-1	PLATE, IDENTIFICATION	67
-	2	2	2	2	21017-2	SCREW, DRIVE	66
-	1	1	1	-	986950-1	WASHER, FLAT PRECISION	64
-	1	1	1	-	21009-2	SCR, SET, SELF LOCKING 1/4-20 X .250	63
-	1	1	1	-	23030-1	SCR, SKT HD CAP 6-32 X .25	62
-	1	1	1	-	22733-8	SCR, BHSC, SELF-LOCKING, 8-32 X .375	60
-	1	1	1	-	2-22603-0	SCR, HEX HD CAP 8-32 X .312	59
-	1	1	1	-	1-21003-9	SCR, FLT SKT HD CAP 6-32 X .375	57
-	1	1	1	-	458537-2	PAWL, FEED	56
-	4	4	4	4	2-21002-2	SCR, BTN SKT HD CAP 8-32 X .500	54
-	2	2	2	2	2-21000-7	SCR, SKT HD CAP 8-32 X .500	53
-	1	1	1	-	21018-5	NUT, HEX, REG 6-32	52
-	1	1	1	-	811242-2	BUMPER, HOLD DOWN	51
-	1	1	1	-	690753-1	SPACER, TONKER	50
-	-	-	-	...	690602-6	CAM, PRE FEED, 1 5/8	49
-	-	-	-	...	690602-5	CAM, PRE FEED, 1 1/8	48
-	1	1	1	-	690501-4	CAM, POST-FEED 1 5/8	47
-	1	1	1	-	459456-1	APPL. BASIC SUB ASSY (SIDE WISE MOCA)	46
-	1	1	1	-	690191-1	PLUG, NYLON	45
-	1	1	1	-	455673-1	RAM, SIDE FEED	44
-	1	1	1	-	690125-1	SHIM SUB-ASSY	43
-	1	1	1	-	1-690124-4	WASHER, RAM (.120)	42
-	1	1	1	-	7-21002-9	SCR, BTN SKT HD CAP 5/16-24 X 1.00	41
-	1	1	1	-	23241-6	BALL, STEEL	40
-	1	1	1	-	690170-1	SPRING, COMPRESSION	39
-	1	1	1	-	1-690142-0	DISC, INSULATION	38
-	1	1	1	-	354777-1	WIRE DISC, ASSEMBLY	37
-	1	1	1	-	22480-5	SPRING, COMPRESSION	36
-	1	1	1	-	690212-1	POST, RAM	35
-	1	1	1	-	690786-3	TERMINAL SUPPORT	34
-	2	2	2	2	2-21002-4	SCR, BTN SKT HD CAP 8-32 X .750	33
-	1	1	1	-	21024-5	WASHER, SPRG LOCK, REG NO 10	32
-	1	1	1	-	3-21000-4	SCR, SKT HD CAP 10-32 X .375	31
-	1	1	1	-	1320908-1	SPACER, STRIP GUIDE	30
-	1	1	1	-	1633091-1	ASSEMBLY, STRIP GUIDE	29
-	1	1	1	-	1-455888-0	SPACER, CRIMPER	28
-	1	1	1	-	1320928-1	PLATE, STRIP GUIDE	24
-	1	1	1	-	690472-2	STRIPPER	22
-	1	1	1	-	2-21000-7	SCR, SKT HD CAP 8-32 X .500	21
-	4	4	4	4	21024-4	WASHER, SPRG LOCK, REG NO 8	20
-	-	-	-	...	691353-1	STRIPPER	19
-	1	1	1	-	679625-2	SHEAR HOLDER, FRONT (NO CUT)	13
-	1	1	1	-	3-22280-3	SPRING, COMPRESSION	12
-	1	1	1	-	690461-2	STOP, SHEAR	11
-	-	-	-	...	1-690459-0	SHEAR HOLDER, FRONT	10
-	1	1	1	-	318707-1	FLOATING SHEAR, FRONT	9
-	1	1	1	-	2-1633330-4	ANVIL, COMBINATION	8
-	-	-	-	...	-	-	7
-	-	-	-	...	-	-	6
-	1	1	1	-	318701-1	DEPRESSOR, SHEAR	5
-	1	1	1	-	238011-8	BLOCK, CRIMPER SPACER	4
-	1	1	1	-	4-1633510-1	CRIMPER, INSUL O	3
-	1	1	1	-	1-455888-8	SPACER, CRIMPER	2
-	1	1	1	-	8-1673600-5	CRIMPER, WIRE	1



DIMENSIONS: INCHES		TOLERANCES UNLESS OTHERWISE SPECIFIED:		DATE: 23APR2009		DRAWN: M. HERR		CHECKED: M. HERR		APPROVED: G. BAILEY		NAME: SIDE FEED HDM APPLICATOR			
0	PLC	±		0	PLC	±		1	PLC	±0.1		1	PLC	±0.01	
1	PLC	±0.1		2	PLC	±0.01		2	PLC	±0.01		2	PLC	±0.01	
2	PLC	±0.01		3	PLC	±0.001		3	PLC	±0.001		3	PLC	±0.001	
3	PLC	±0.001		4	PLC	±0.0001		4	PLC	±0.0001		4	PLC	±0.0001	
4	PLC	±0.0001													
MATERIAL:		FINISH:		WEIGHT:		SCALE: 3:5		SHEET: 1 OF 1		REV: A		CUSTOMER DRAWING			

# Mouser Electronics

Authorized Distributor

Click to View Pricing, Inventory, Delivery & Lifecycle Information:

[TE Connectivity:](#)

[1852845-2](#)