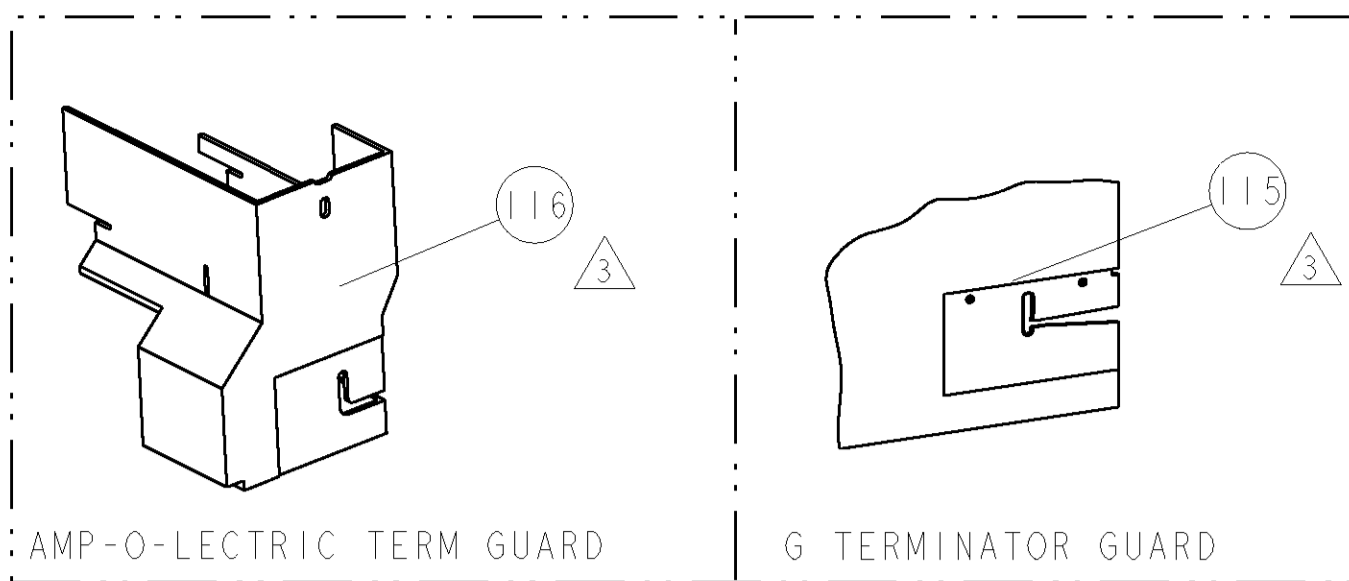


8				7			
THIS DRAWING IS UNPUBLISHED.				RELEASED FOR PUBLICATION			
COPYRIGHT 20				20			
BY TYCO ELECTRONICS CORPORATION. ALL RIGHTS RESERVED.							
PART NUMBER		REV	FIRST USED	POWER UNIT	FEED TYPE	DESCRIPTION	
1855226-1		A	122500-1	LEADMAKER	POST FEED	CUTS CARRIER	
1855226-2		A	565435-5	BENCH MODEL K	PRE FEED	CUTS CARRIER	
1855226-3		A	354500-1	BENCH MODEL G	PRE FEED	CUTS CARRIER	
1855226-6		A	122500-1	LEADMAKER	POST FEED	CONTINUOUS CARRIER	
7-1855226-7		A	-	-	-	SPARE PARTS	

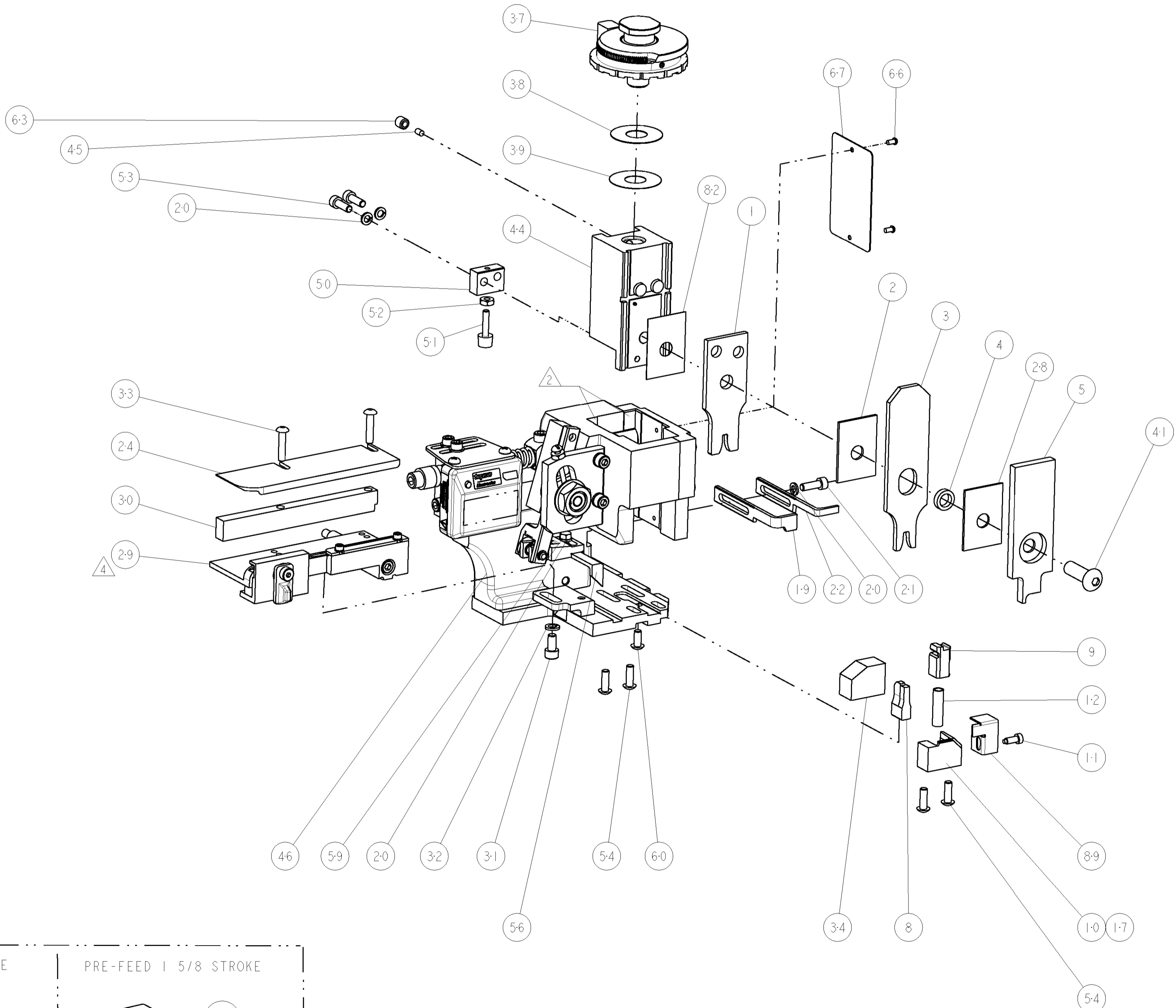
- △ RECOMMENDED SPARE PARTS
- △ GREASE LIGHTLY
- △ GUARD MUST BE IN PLACE WHEN OPERATING APPLICATOR IN A BENCH MACHINE
- △ ADJUST FRONT STRIP GUIDE PLATE SO FEED FINGER IS GUIDED BY OUTSIDE EDGE RATHER THAN THE SLOT.

*** WARNING**
ON INSTALLATION, SET WIRE DISC TO LARGEST WIRE SIZE SETTING. USE OF SETTINGS BELOW MIN. REQUIRED CRIMP HEIGHT SETTING WILL CAUSE DAMAGE TO CRIMP TOOLING.



TERMINAL NAME: TAXI TERMINAL, FEMALE, 56 SERIES					
TYCO PN	MANUF PN	PACKARD TERM. - PACKARD CRIMP SPECS			
1949310	12124517				
-	-	CRIMP HEIGHT		WIRE SIZE	REF SETTING
-	-	1.70±0.05mm[.067±.002]		2mm2	B-8
-	-	1.65±0.05mm[.065±.002]		1.5mm2	C-2
-	-	1.65±0.05mm[.065±.002]		1mm2	B-9
-	-	-		-	-
-	-	CRIMP	SIZE	TYPE	RANGE
-	-	WIRE	3.23mm [.127]	F	1.00-2.00mm2
-	-	INSUL	3.94mm [.155]	F	Ø2.48-3.05
WIRE STRIP LENGTH 4.83-5.21		TERM APPL SPEC NONE	FEED 17.53	APPLICATOR INSTRUCTIONS 408-8040	
				SET UP GAGE 458637-1	

LOC		DIST		REVISONS			
A		66		P	LTR	DESCRIPTION	DATE
				A		RELEASED	10APR2007
							MEH
							GB



△	-	-	-	REF	-	..	455749-1	GUARD WINDOW	116
△	-	-	REF	-	-	..	679532-1	INSERT, GUARD	115
-	1	1	1	1	1	-	1-21002-7	SCR, BTN SKT HD CAP 6-32 X .375	91
-	1	1	1	1	1	-	318563-1	GUARD, FRONT CHIP	89
-	1	1	1	1	1	-	455888-1	SPACER, CRIMPER	82
-	1	1	1	1	1	-	4088040	SF APPL INST 408-8040	72
-	1	1	1	1	1	-	217238-1	GENERAL INSTRUCTION PKG	71
-	1	1	1	1	1	-	461264-5	PLATE, IDENTIFICATION	67
-	2	2	2	2	2	-	21017-2	SCREW, DRIVE	66
-	1	1	1	1	1	-	21009-2	SCR, SET, SELF LOCKING 1/4-20 X .250	63
-	1	1	1	1	1	-	22733-8	SCR, BHSC, SELF-LOCKING, 8-32 X .375	60
-	1	1	1	1	1	-	2-22603-0	SCR, HEX HD CAP 8-32 X .312	59
-	1	1	1	1	1	-	458537-2	PAWL, FEED	56
-	4	4	4	4	4	-	2-21002-2	SCR, BTN SKT HD CAP 8-32 X .500	54
-	2	2	2	2	2	-	2-21000-7	SCR, SKT HD CAP 8-32 X .500	53
-	1	1	1	1	1	-	21018-5	NUT, HEX, REG 6-32	52
-	1	1	1	1	1	-	811242-2	BUMPER, HOLD DOWN	51
-	1	1	1	1	1	-	690753-1	SPACER, TONKER	50
-	-	-	-	-	..	-	690602-6	CAM, PRE FEED, 1 5/8	49
-	-	-	-	-	..	-	690602-5	CAM, PRE FEED, 1 1/8	48
-	1	-	-	-	1	-	690501-4	CAM, POST FEED, 1 5/8	47
-	1	1	1	1	1	-	459456-1	APPL. BASIC SUB ASSY (SIDE WISE MQCA)	46
-	1	1	1	1	1	-	690191-1	PLUG,NYLON	45
-	1	1	1	1	1	-	819307-1	RAM, SIDE FEED	44
-	1	1	1	1	1	-	7-21002-9	SCR, BTN SKT HD CAP 5/16-24 X 1.00	41
-	1	1	1	1	1	-	690125-1	SHIM SUB-ASSY	39
-	1	1	1	1	1	-	1-469367-0	SHIM	38
-	1	1	1	1	1	-	879103-3	FINE ADJUST HEAD ASSEMBLY	37
-	1	1	1	1	1	-	690786-3	TERMINAL SUPPORT	34
-	2	2	2	2	2	-	2-21002-4	SCR, BTN SKT HD CAP 8-32 X .750	33
-	1	1	1	1	1	-	21024-5	WASHER, SPRG LOCK, REG NO 10	32
-	1	1	1	1	1	-	3-21000-4	SCR, SKT HD CAP 10-32 X .375	31
-	1	1	1	1	1	-	1320908-1	SPACER, STRIP GUIDE	30
△	1	1	1	1	1	-	1633091-1	ASSEMBLY, STRIP GUIDE	29
-	1	1	1	1	1	-	1-455888-0	SPACER, CRIMPER	28
-	1	1	1	1	1	-	1320928-1	PLATE, STRIP GUIDE	24
-	1	-	-	-	1	-	690472-2	STRIPPER	22
-	1	1	1	1	1	-	2-21000-7	SCR, SKT HD CAP 8-32 X .500	21
-	4	4	4	4	4	-	21024-4	WASHER, SPRG LOCK, REG NO 8	20
-	-	1	1	-	-	-	691353-1	STRIPPER	19
△	1	-	-	-	-	-	679625-1	SHEAR HOLDER, FRONT (NO CUT)	17
-	1	1	1	1	1	-	3-22280-3	SPRING, COMPRESSION	12
-	1	1	1	1	1	-	690461-1	STOP, SHEAR	11
△	-	-	1	1	1	-	690459-1	SHEAR HOLDER, FRONT	10
△	1	1	1	1	1	-	454276-1	FLOATING SHEAR, FRONT	9
△	1	1	1	1	1	-	1-1633535-2	ANVIL, COMBINATION	8
-	1	1	1	1	1	-	3-455889-6	DEPRESSOR, SHEAR	5
-	1	1	1	1	1	-	238011-2	BLOCK, CRIMPER SPACER	4
△	1	1	1	1	1	-	3-456134-6	CRIMPER, INSULATION F PREMIUM	3
△	1	1	1	1	1	-	1-455888-2	SPACER, CRIMPER	2
△	1	1	1	1	1	-	6-1673600-5	CRIMPER, WIRE	1

-77		-6	-3	-2	-1	U/M	PART NO	DESCRIPTION		ITEM NO
THIS IS THE ONLY DRAWING TO BE USED FOR THE CONSTRUCTION OF THIS ORGANIZATION. NO OTHER DRAWINGS SHOULD BE CONSIDERED FOR THE LATEST REVISED.							DRAWN J.M. HERR 20MAR2007	Tyco Electronics Harrisburg, PA 17105-3608		
							CHKD G. BAILEY 20MAR2007	NAME		
							APVD T. BENCHOFF	PRODUCT SPEC		
								APPLICATION SPEC		
								WEIGHT		
								CUSTOMER DRAWING		
								SCALE		
								OF		
								REV		

Mouser Electronics

Authorized Distributor

Click to View Pricing, Inventory, Delivery & Lifecycle Information:

[TE Connectivity:](#)

[1855226-3](#)