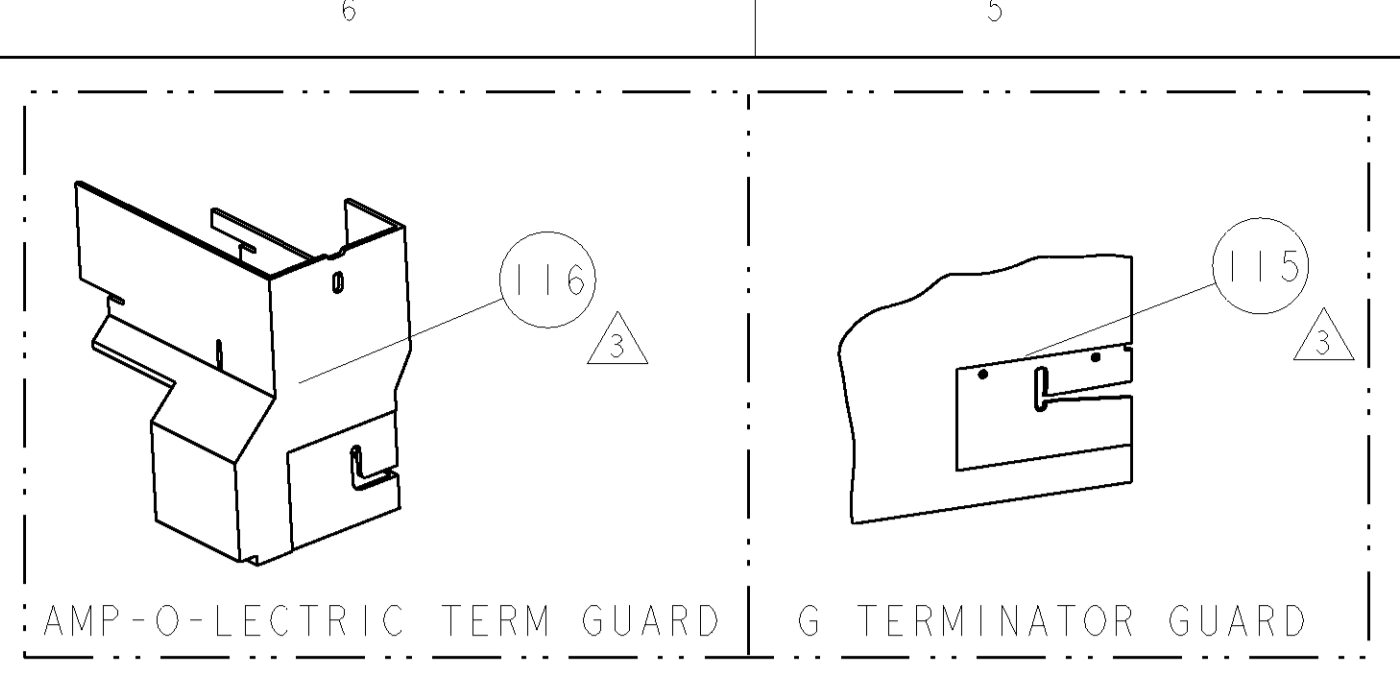


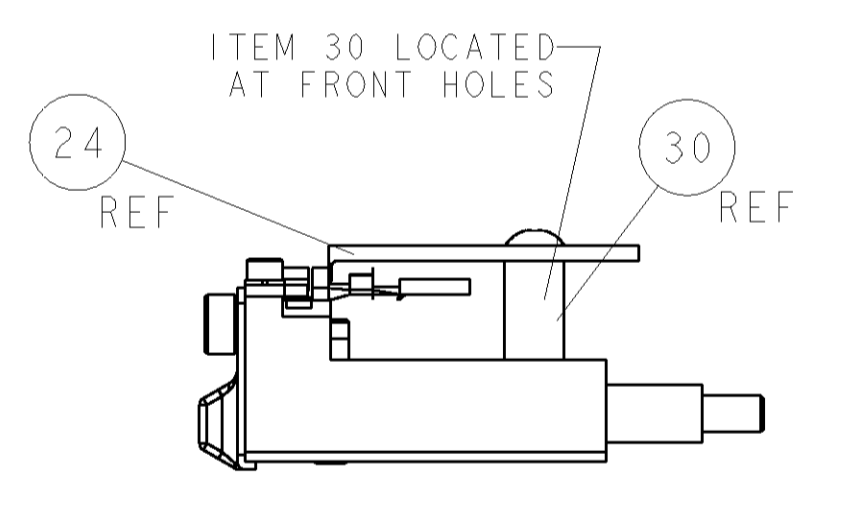
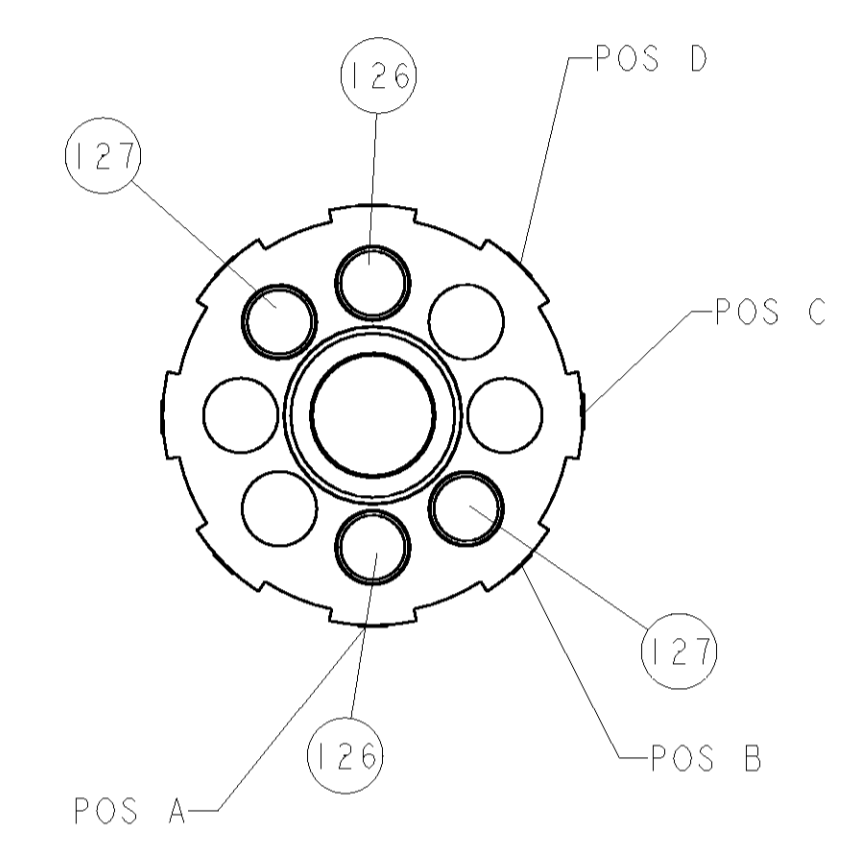
PART NUMBER	REV	FIRST USED	POWER UNIT	FEED TYPE	DESCRIPTION
1852223-1	A	122500-1	LEADMAKER	POST FEED	CUTS CARRIER
1852223-2	A	565435-5	BENCH MODEL K	PRE FEED	CUTS CARRIER
1852223-3	A	354500-1	BENCH MODEL G	PRE FEED	CUTS CARRIER
1852223-6	A	122500-1	LEADMAKER	POST FEED	CONTINUOUS CARRIER
7-1852223-7	A	-	-	-	SPARE PARTS



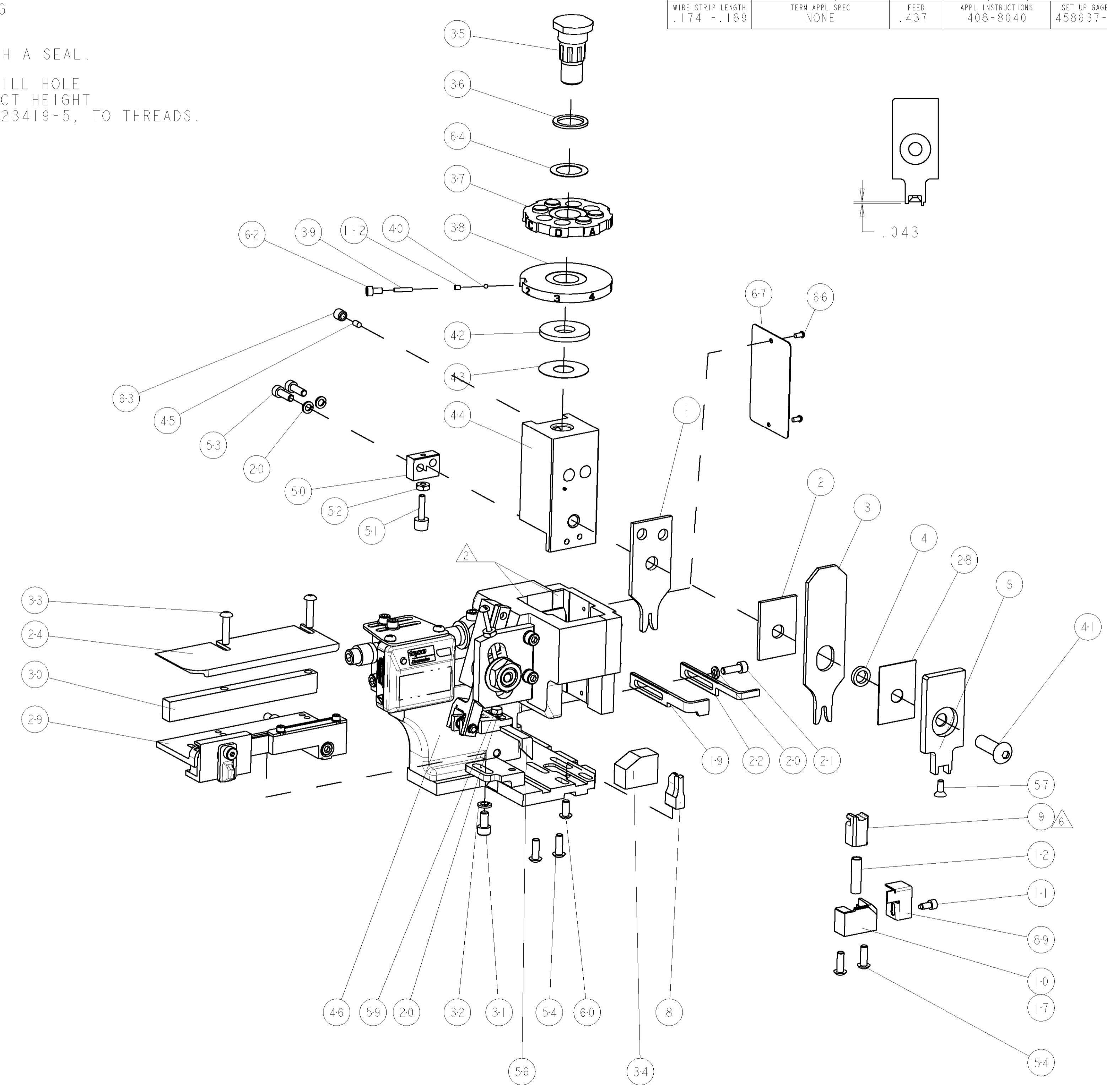
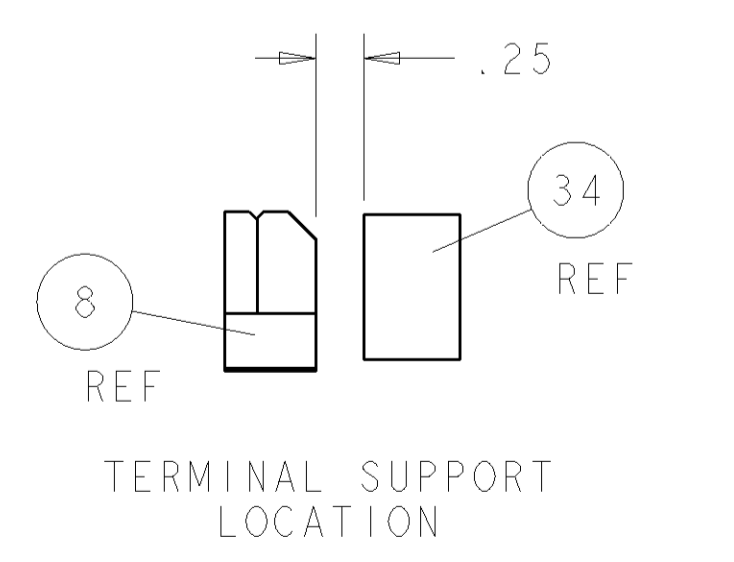
TERMINAL NAME: TERMINAL, Z-TYPE FEMALE (5)				
TYCO PN	COMP PN	YAZAKI TERMINAL - AMP CRIMP SPECS		
1572987-1	7116-1305			
-	-	PAD LTR	CRIMP HEIGHT	WIRE SIZE
-	-	A	.052±.002[1.32±0.05mm]	18 AWG
-	-	B	.046±.002[1.17±0.05mm]	20 AWG
-	-	C	-	-
-	-	D	-	-
SEAL PN.	-	CRIMP	SIZE	TYPE RANGE
1572988-1	-	WIRE	.070 [1.78mm]	F 18-20 AWG
-	-	INSUL	.140 [3.56mm]	O .110 MAX
WIRE STRIP LENGTH	TERM APPL SPEC	FEED	APPL INSTRUCTIONS	SET UP GAGE
.174 -.189	NONE	.437	408-8040	458637-1

LOC	DIST	REV	DESCRIPTION	DATE	BY	APPD
A	66					
		A	REVISED	29MAR2006	BH	BH

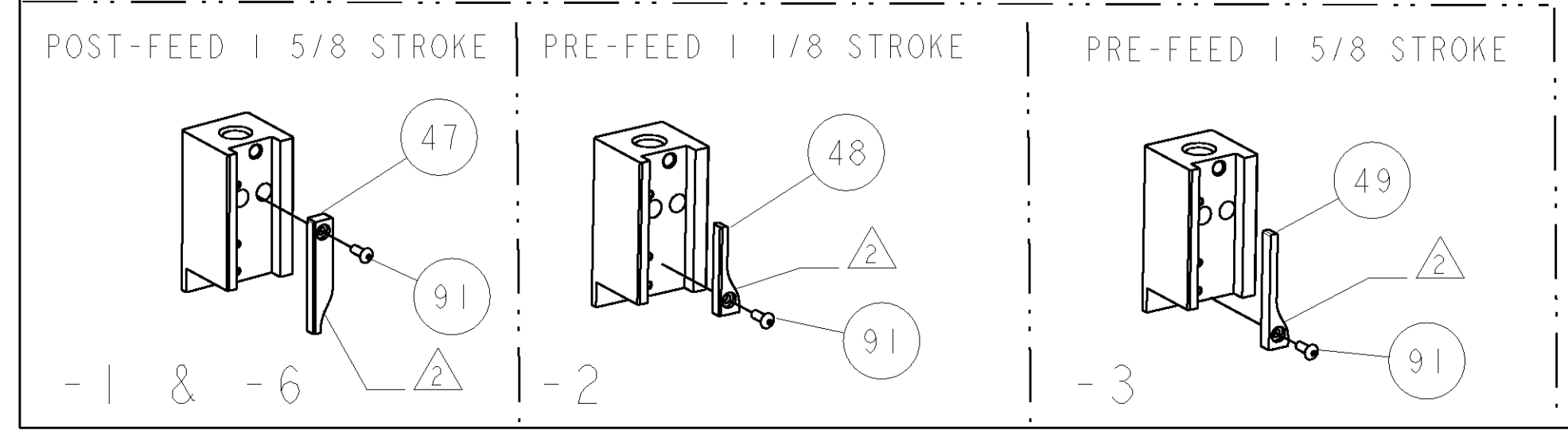
- △ RECOMMENDED SPARE PARTS
- △ GREASE LIGHTLY
- △ GUARD MUST BE IN PLACE WHEN OPERATING APPLICATOR IN A BENCH MACHINE
- △ THIS APPLICATOR APPLIES TERMINAL WITH A SEAL.
- △ APPLY TORO-SEAL IN ALLEN SOCKET TO FILL HOLE AFTER FLAT HEAD IS ADJUSTED TO CORRECT HEIGHT AT QUALIFICATION. APPLY LOC-TITE 1-23419-5, TO THREADS.



FEED TRACK POSITION



QTY	REV	LOC	DIST	REV	DESCRIPTION	DATE	BY	APPD	ITEM NO
-	2	2	2	2	-	3-354779-7			127
-	2	2	2	2	-	2-354779-3			126
-	-	-	REF	-	455749-1				116
-	-	REF	-	-	679532-1				115
-	1	1	1	1	690603-1				112
-	1	1	1	1	1-21002-7				91
-	1	1	1	1	318563-1				89
-	1	1	1	1	4088040				72
-	1	1	1	1	217238-1				71
-	1	1	1	1	461264-1				67
-	2	2	2	2	21017-2				66
-	1	1	1	1	986950-1				64
-	1	1	1	1	21009-2				63
-	1	1	1	1	23030-1				62
-	1	1	1	1	22733-8				60
-	1	1	1	1	2-22603-0				59
-	1	1	1	1	1-21003-9				57
-	1	1	1	1	458537-2				56
-	4	4	4	4	2-21002-2				54
-	2	2	2	2	2-21000-7				53
-	1	1	1	1	21018-5				52
-	1	1	1	1	811242-2				51
-	1	1	1	1	690753-1				50
-	-	1	-	-	690602-6				49
-	1	-	-	1	690602-5				48
-	1	-	-	1	690501-4				47
-	1	1	1	1	459456-1				46
-	1	1	1	1	690191-1				45
-	1	1	1	1	455673-1				44
-	1	1	1	1	690125-1				43
-	1	1	1	1	690124-1				42
-	1	1	1	1	7-21002-9				41
-	1	1	1	1	23241-6				40
-	1	1	1	1	690170-1				39
-	1	1	1	1	1-690142-0				38
-	1	1	1	1	354777-1				37
-	1	1	1	1	22480-5				36
-	1	1	1	1	690212-1				35
-	1	1	1	1	3-690786-3				34
-	2	2	2	2	2-21002-4				33
-	1	1	1	1	21024-5				32
-	1	1	1	1	3-21000-4				31
-	1	1	1	1	1320908-8				30
-	1	1	1	1	1633091-2				29
-	1	1	1	1	455888-5				28
-	1	1	1	1	1320928-3				24
-	1	-	-	1	690472-2				22
-	1	1	1	1	2-21000-7				21
-	4	4	4	4	21024-4				20
-	-	1	1	-	691353-1				19
-	1	-	-	-	679625-2				17
-	1	1	1	1	3-22280-3				12
-	1	1	1	1	690461-2				11
-	-	1	1	1	1-690459-0				10
-	1	1	1	1	318707-1				9
-	1	1	1	1	5-1633116-5				8
-	1	1	1	1	318701-1				5
-	1	1	1	1	238011-4				4
-	1	1	1	1	1-456135-8				3
-	1	1	1	1	2-455888-1				2
-	1	1	1	1	1-456404-8				1



DIMENSIONS: INCHES		TOLERANCES UNLESS OTHERWISE SPECIFIED:		DWG: B. HIGMAN 09MAR2006		Tyco Electronics Harrisburg, PA 17105-3608	
0 PLC	±	1 PLC	±0.01	APVD: J. ELBIN 09MAR2006	NAME: SIDE FEED HDM APPLICATOR		
2 PLC	±0.01	3 PLC	±0.001	PRODUCT SPEC: -			
4 PLC	±0.001	APPLICATION SPEC: NONE				SIZE: A1	
MATERIAL: -		FINISH: -		WEIGHT: -		SCALE: 3:5	
CUSTOMER DRAWING				DRAWING NO: 00779		REV: A	

CUSTOMER VIEWABLE ASSEMBLY

Mouser Electronics

Authorized Distributor

Click to View Pricing, Inventory, Delivery & Lifecycle Information:

[TE Connectivity:](#)

[1852223-3](#)