

Printed-circuit board connector - PTSM 0,5/ 4-HHI-2,5-THR WH R32 - 1815002


Please be informed that the data shown in this PDF Document is generated from our Online Catalog. Please find the complete data in the user's documentation. Our General Terms of Use for Downloads are valid (<http://phoenixcontact.com/download>)



Header, Nominal current: 6 A, Rated voltage (III/2): 250 V, Number of positions: 4, Pitch: 2.5 mm, Color: white, Contact surface: Tin, Mounting: Taped SMD/THT/THR components



Key commercial data

Packing unit	500 pc
Minimum order quantity	500 pc
GTIN	 4 046356 761284
Weight per Piece (excluding packing)	1.94 g
Custom tariff number	85369010
Country of origin	Germany
Note	Made to Order (non-returnable)

Technical data

Dimensions

Pitch	2.5 mm
Dimension a	7.5 mm
Pin dimensions	0,6 x 0,4 mm
Hole diameter	1 mm

General

Range of articles	PTSM 0,5/..-HHI-THR
Insulating material group	I
Rated surge voltage (III/3)	2.5 kV
Rated surge voltage (III/2)	2.5 kV
Rated surge voltage (II/2)	2.5 kV
Rated voltage (III/3)	160 V
Rated voltage (III/2)	250 V
Rated voltage (II/2)	400 V

Printed-circuit board connector - PTSM 0,5/ 4-HHI-2,5-THR WH R32 - 1815002

Technical data

General

Nominal current I _N	6 A
Maximum load current	6 A
Insulating material	PA
Inflammability class according to UL 94	V0
Color	white
Number of positions	4

Classifications

eCl@ss

eCl@ss 4.0	27141109
eCl@ss 4.1	27141109
eCl@ss 5.0	27141190
eCl@ss 5.1	27141190
eCl@ss 6.0	27261101
eCl@ss 7.0	27440401
eCl@ss 8.0	27440402

ETIM

ETIM 3.0	EC001121
ETIM 4.0	EC002643
ETIM 5.0	EC002637

UNSPSC

UNSPSC 6.01	30211801
UNSPSC 7.0901	39121432
UNSPSC 11	39121432
UNSPSC 12.01	39121432
UNSPSC 13.2	39121432

Approvals

Approvals

Approvals

UL Recognized / EAC


Ex Approvals

Printed-circuit board connector - PTSM 0,5/ 4-HHI-2,5-THR WH R32 - 1815002

Approvals

Approvals submitted

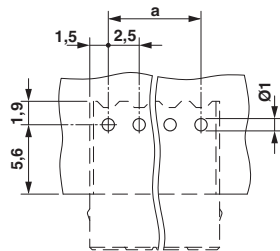
Approval details

UL Recognized 	
Nominal current I_N	B 5 A
Nominal voltage U_N	150 V

EAC

Drawings

Drilling diagram



Dimensioned drawing

