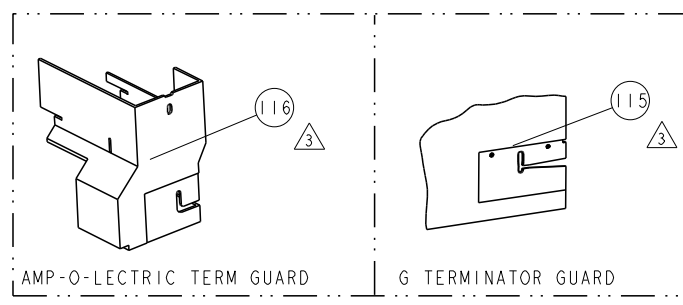


PART NUMBER	REV	FIRST USED	POWER UNIT	FEED TYPE	DESCRIPTION
1855228-1	A	122500-1	LEADMAKER	POST FEED	CUTS CARRIER
1855228-2	A	565435-5	BENCH MODEL K	PRE FEED	CUTS CARRIER
1855228-3	A	354500-1	BENCH MODEL G	PRE FEED	CUTS CARRIER
1855228-6	A	122500-1	LEADMAKER	POST FEED	CONTINUOUS CARRIER
7-1855228-7	A	-	-	-	SPARE PARTS

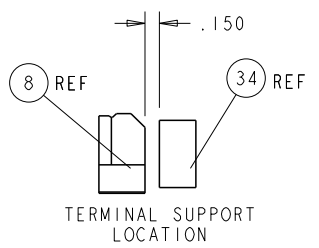
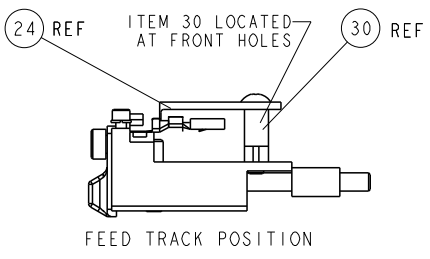
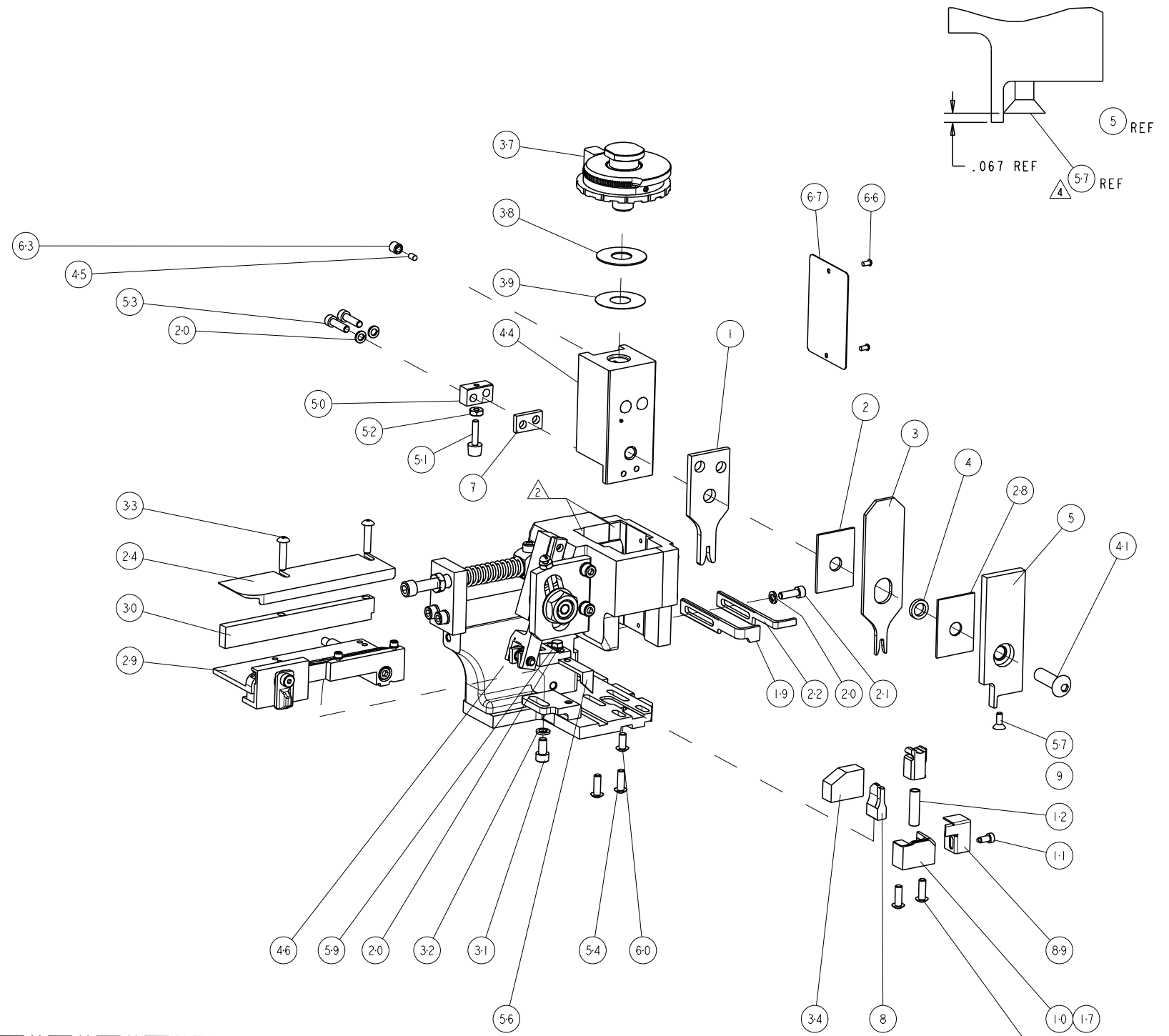


TE PN		MFR PN		PACKARD TERMINAL - PACKARD CRIMP SPECS		REF SETTING
1949312-1	15471370			CRIMP HEIGHT		WIRE SIZE
1949571-1	15326429			1.25±0.05mm [.049±.002]		0.8mm2
-	-			-		-
-	-			-		-
-	-			-		-
-	-			-		-
TE SEAL PN	MFR SEAL PN	CRIMP	SIZE	TYPE	RANGE	
1949045-1	15305351	WIRE	2.03mm [.080]	F	0.8mm	
-	-	INSUL	2.89mm [.114]	O	∅2.02-1.70	
WIRE STRIP LENGTH	TERM APPL SPEC	FEED	APPLICATOR INSTRUCTIONS		SET UP GAGE	
4.95-5.34	NONE	10.92mm	408-8040		458637-1	

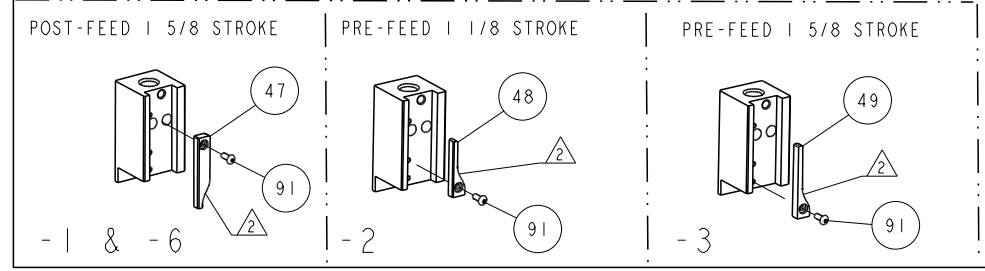
LOC	DIST	#	LYR	DESCRIPTION	DATE	DWN	APVD
A	66	A		RELEASED	07NOV2007	BH	BH
		A1		ECR-07-026795	07NOV2007	BH	BH
		A2		ECR-14-004963	08APR2014	YY	TE

- △ RECOMMENDED SPARE PARTS
- △ GREASE LIGHTLY
- △ GUARD MUST BE IN PLACE WHEN OPERATING APPLICATOR IN A BENCH MACHINE

* WARNING
ON INSTALLATION, SET WIRE DISC TO LARGEST WIRE SIZE SETTING. USE OF SETTINGS BELOW MIN. REQUIRED CRIMP HEIGHT SETTING WILL CAUSE DAMAGE TO CRIMP TOOLING.



QTY	REF	DESCRIPTION	ITEM NO
1	REF	GUARD WINDOW	116
1	REF	INSERT, GUARD	115
1		SCR, BTN SKT HD CAP 6-32 X .375	91
1		GUARD, FRONT CHIP	89
1		SF APPL INST 408-8040	72
1		GENERAL INSTRUCTION PKG	71
1		PLATE, IDENTIFICATION	67
2	2	SCREW, DRIVE	66
1		SCR, SET, SELF LOCKING 1/4-20 X .250	63
1		SCR, BHSC, SELF-LOCKING, 8-32 X .375	60
1		SCR, HEX HD CAP 8-32 X .312	59
1		SCR, FLT SKT HD CAP 6-32 X .375	57
1		PAWL, FEED	56
4	4	SCR, BTN SKT HD CAP 8-32 X .500	54
2	2	SCR, SKT HD CAP 8-32 X .625	53
1		NUT, HEX, REG 6-32	52
1		BUMPER, HOLD DOWN	51
1		SPACER, TONKER	50
1		CAM, PRE FEED, 1 5/8	49
1		CAM, PRE FEED, 1 1/8	48
1		CAM, POST-FEED 1 5/8	47
1		APPL. BASIC SUB ASSY (SIDE WISE MOCA)	46
1		PLUG, NYLON	45
1		RAM, SIDE FEED	44
1		SCR, BTN SKT HD CAP 5/16-24 X 1.00	41
1		SHIM SUB-ASSY	39
1		SHIM	38
1		FINE ADJUST HEAD ASSEMBLY	37
1		TERMINAL SUPPORT	34
2	2	SCR, BTN SKT HD CAP 8-32 X .750	33
1		WASHER, SPRG LOCK, REG NO 10	32
1		SCR, SKT HD CAP 10-32 X .375	31
1		SPACER, STRIP GUIDE	30
1		ASSEMBLY, STRIP GUIDE	29
1		SPACER, CRIMPER	28
1		STRIP GUIDE	24
1		STRIPPER	22
1		SCR, SKT HD CAP 8-32 X .500	21
4	4	WASHER, SPRG LOCK, REG NO 8	20
1		STRIPPER	19
1		SHEAR HOLDER, FRONT (NO CUT)	17
1		SPRING, COMPRESSION	12
1		STOP, SHEAR	11
1		SHEAR HOLDER, FRONT	10
1		FLOATING SHEAR, FRONT	9
1		ANVIL, COMBINATION	8
1		SPACER	7
1		DEPRESSOR, SHEAR	5
1		BLOCK, CRIMPER SPACER	4
1		CRIMPER, INSUL O PREMIUM	3
1		SPACER, CRIMPER	2
1		CRIMPER, WIRE PREMIUM	1



DIMENSIONS: INCHES		TOLERANCES UNLESS OTHERWISE SPECIFIED:		DWN B HIGMAN 25MAR2007		TE Connectivity Harrisburg, PA 17105-3608	
0 PLC	±	1 PLC	±0.1	CHK B HIGMAN 25MAR2007	NAME		
2 PLC	±0.01	3 PLC	±0.001	APVD T ELBIN 25MAR2007	PRODUCT SPEC		
4 PLC	±0.0001	ANGLES	±0.0001	APPLICATION SPEC			
MATERIAL		FINISH		WEIGHT		RESTRICTED TO	
-		-		-		-	
CUSTOMER DRAWING				SCALE 3:5		SHEET 1 OF 1	
A1 00779				C=1855228		REV A2	

CUSTOMER VIEWABLE ASSEMBLY