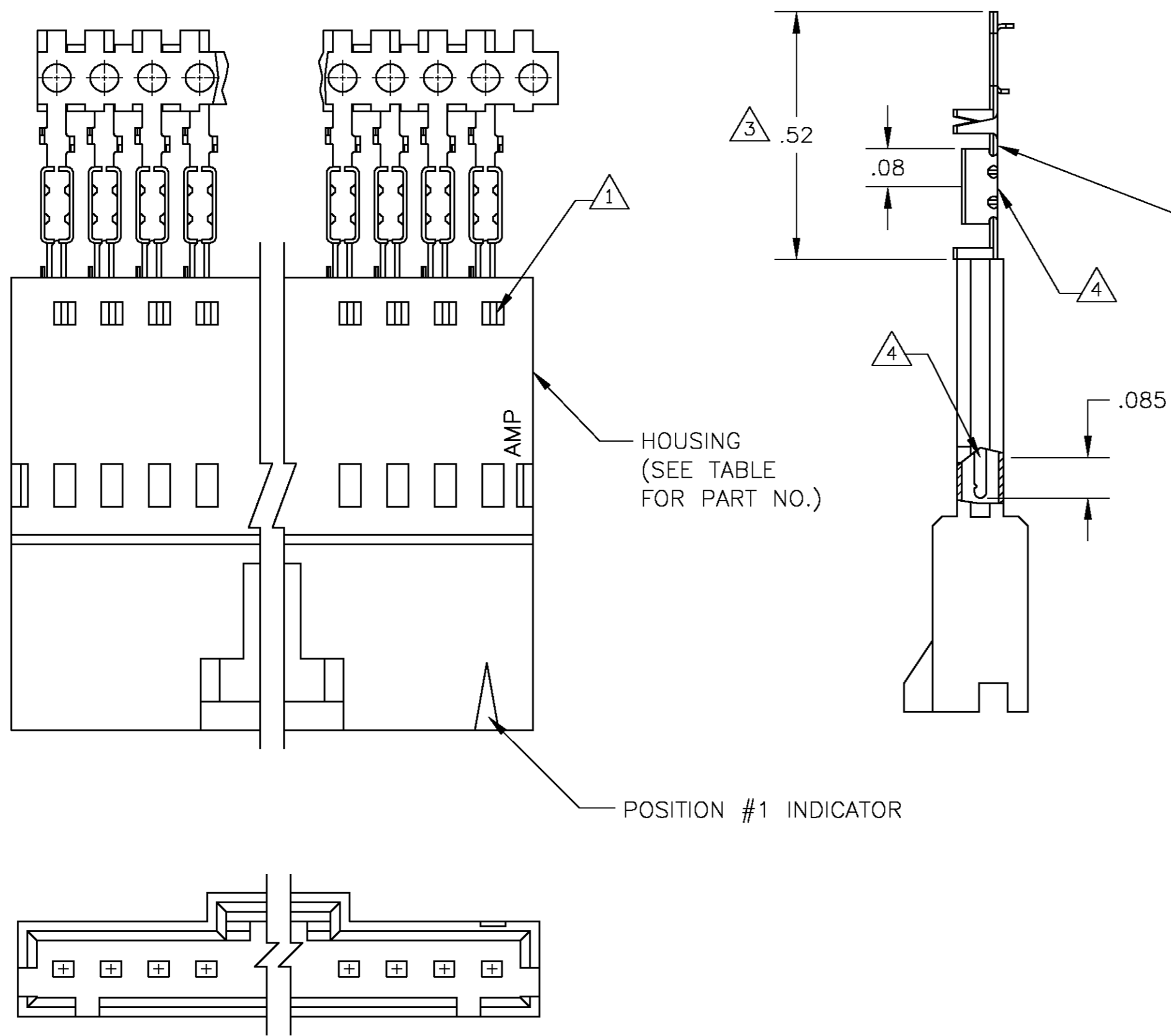


THIS DRAWING IS UNPUBLISHED. RELEASED FOR PUBLICATION
 © COPYRIGHT BY TYCO ELECTRONICS CORPORATION. ALL RIGHTS RESERVED.

| LOC | DIST | REVISIONS | | | | | |
|-----|------|-----------|-----|-----------------|---------|-----|------|
| AD | 00 | P | LTR | DESCRIPTION | DATE | DWN | APVD |
| | | M | | EC 0G3C 0766 04 | 27DEC04 | BSV | JLG |



CONTACT IDENTIFICATION LETTER "D" (LOCATED IN THIS AREA)

| | | | |
|----|------------|----|------------|
| △8 | 2-103653-4 | 25 | 7-103893-4 |
| △8 | 2-103653-3 | 24 | 7-103893-3 |
| △8 | 2-103653-2 | 23 | 7-103893-2 |
| △8 | 2-103653-1 | 22 | 7-103893-1 |
| △8 | 2-103653-0 | 21 | 7-103893-0 |
| △8 | 1-103653-9 | 20 | 6-103893-9 |
| △8 | 1-103653-8 | 19 | 6-103893-8 |
| △8 | 1-103653-7 | 18 | 6-103893-7 |
| △8 | 1-103653-6 | 17 | 6-103893-6 |
| △8 | 1-103653-5 | 16 | 6-103893-5 |
| △8 | 1-103653-4 | 15 | 6-103893-4 |
| △8 | 1-103653-3 | 14 | 6-103893-3 |
| △8 | 1-103653-2 | 13 | 6-103893-2 |
| △7 | 2-103653-4 | 25 | 2-103893-4 |
| △7 | 2-103653-3 | 24 | 2-103893-3 |
| △7 | 2-103653-2 | 23 | 2-103893-2 |
| △7 | 2-103653-1 | 22 | 2-103893-1 |
| △7 | 2-103653-0 | 21 | 2-103893-0 |
| △7 | 1-103653-9 | 20 | 1-103893-9 |
| △7 | 1-103653-8 | 19 | 1-103893-8 |
| △7 | 1-103653-7 | 18 | 1-103893-7 |
| △7 | 1-103653-6 | 17 | 1-103893-6 |
| △7 | 1-103653-5 | 16 | 1-103893-5 |
| △7 | 1-103653-4 | 15 | 1-103893-4 |
| △7 | 1-103653-3 | 14 | 1-103893-3 |
| △7 | 1-103653-2 | 13 | 1-103893-2 |
| △7 | 1-103653-1 | 12 | 1-103893-1 |
| △7 | 1-103653-0 | 11 | 1-103893-0 |
| △7 | 103653-9 | 10 | 103893-9 |
| △7 | 103653-8 | 9 | 103893-8 |
| △7 | 103653-7 | 8 | 103893-7 |
| △7 | 103653-6 | 7 | 103893-6 |
| △7 | 103653-5 | 6 | 103893-5 |
| △7 | 103653-4 | 5 | 103893-4 |
| △7 | 103653-3 | 4 | 103893-3 |
| △7 | 103653-2 | 3 | 103893-2 |
| △7 | 103653-1 | 2 | 103893-1 |

SUPERSEDED BY 1-103946-1
 SUPERSEDED BY 1-103946-0
 SUPERSEDED BY 103946-9
 SUPERSEDED BY 103946-8
 SUPERSEDED BY 103946-7
 SUPERSEDED BY 103946-6
 SUPERSEDED BY 103946-5
 SUPERSEDED BY 103946-4
 SUPERSEDED BY 103946-3
 SUPERSEDED BY 103946-2
 SUPERSEDED BY 103946-1

- △1 CONTACTS ARE LATCHED INTO THE PRELOAD WINDOWS
- △2 USE WITH #22-#26 AWG WIRE SIZE, .054/.030 INSULATION DIAMETER, .015 MAXIMUM INSULATION THICKNESS
- △3 THE DIMENSION APPLIES WITH THE FORWARD PRELOAD STOP IN CONTACT WITH THE HOUSING SURFACE
- △4 POINT OF MEASUREMENT FOR PLATING THICKNESS
- 5 FOR STRIP ASSEMBLIES SEE PART NUMBER 103946
- △6 MATERIAL- HOUSING: FLAME RETARDANT THERMOPLASTIC, COLOR: BLACK
PINS: PHOS. BRONZE
- △7 FINISH- PINS: .000030 GOLD IN THE CONTACT AREA, .000050-.000100 BRIGHT TIN-LEAD ON THE TERMINATION AREA, OVER .000050 NICKEL.
- △8 FINISH- PINS: .000030 GOLD IN THE CONTACT AREA, .000050-.000100 MATTE TIN ON THE TERMINATION AREA, OVER .000050 NICKEL.

| | | | | |
|--|--|----------------------------|--|------------------------------|
| THIS DRAWING IS A CONTROLLED DOCUMENT. | | DWN R BROWN 26JUL00 | Tyco Electronics Corporation Harrisburg, Pa 17105-3608 | |
| DIMENSIONS: INCHES | | CHK K WRIGHT 26JUL00 | NAME SHROUDED PIN ASSY, AMPMODU MTE, SINGLE ROW, .100 CL, POLARIZED, WITH LATCH WINDOWS, FOR #22-#26 AWG WIRE SIZE | |
| TOLERANCES UNLESS OTHERWISE SPECIFIED: 0 PLC ± - 1 PLC ± - 2 PLC ± .02 3 PLC ± .005 4 PLC ± - ± - ANGLES ± - ± - FINISH SEE TABLE | | APVD K WRIGHT 26JUL00 | PRODUCT SPEC 108-25034 | |
| MATERIAL △6 | | APPLICATION SPEC 114-25026 | SIZE A2 | CAGE CODE 00779 |
| | | WEIGHT - | DRAWING NO C=103893 | |
| | | CUSTOMER DRAWING | RESTRICTED TO - | SCALE 4:1 SHEET 1 OF 1 REV M |