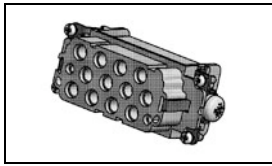


## 1103154-1 Product Details

[Share](#) [Print](#) [Email](#)



**1103154-1**

TE Internal Number: 1103154-1

 Active

 [View 3D PDF](#)

### HTS Connectors and Accessories

 Always EU RoHS/ELV Compliant (Statement of Compliance)

#### Product Highlights:

- HMX Series
- Insert
- Product Size = 6
- Insert Style = Socket
- Female

[View all Features](#)

### Quick Links

- [Pricing & Availability](#)
- [Search for Tooling](#)
- [Product Feature Selector](#)
- [Contact Us About This Product](#)

[Add to My Part List](#)

[Request Sample](#)

[Find Similar Products](#)

[Buy Product](#)

### Documentation & Additional Information

#### Product Drawings:

- [FEMALE INSERT ASSY HMX.12/2.Bu.C FEMALE INSERT ASSY \(PDF, English\)](#)

#### Catalog Pages/Data Sheets:

- None Available

#### Product Specifications:

- None Available

#### Application Specifications:

- None Available

#### Instruction Sheets:

- None Available

#### CAD Files: [\(CAD Format & Compression Information\)](#)

- [2D Drawing](#) (DXF, Version B)
- [3D Model](#) (IGES, Version B)
- [3D Model](#) (STEP, Version B)

[List all Documents](#)

#### Additional Information:

- [Product Line Information](#)

#### Related Products:

- [Tooling](#)

### Product Features (Please use the Product Drawing for all design activity)

#### Product Type Features:

- Product Type = Insert
- Product Size = 6
- Gender = Female
- Finish = Light Gray

#### Body Features:

- Insert Style = Socket
- Material = PBT-GF30

#### Contact Features:

- Number of Poles = 12+2

#### Industry Standards:

- [RoHS/ELV Compliance](#) = RoHS compliant, ELV compliant
- [Lead Free Solder Processes](#) = Not relevant for lead free process
- RoHS/ELV Compliance History = Always was RoHS compliant

#### Packaging Features:

- Packaging Method = Loose Piece
- Packaging Quantity = 5

#### Other:

- Series = HMX
- Brand = HTS

### Corporate Information

[About TE](#)  
[Investors](#)  
[News Room](#)  
[Supplier Portal](#)  
[Careers](#)  
[Terms & Conditions](#)  
[Privacy Policy](#)  
[AODA Accessibility Policy](#)  
[AODA Multi-Year Accessibility Plan](#)

### Quick Links

[Distributor Inventory](#)  
[Product Cross Reference](#)  
[Documents & Drawings](#)  
[Product Compliance Support Center](#)  
[Site Map](#)

### Customer Support

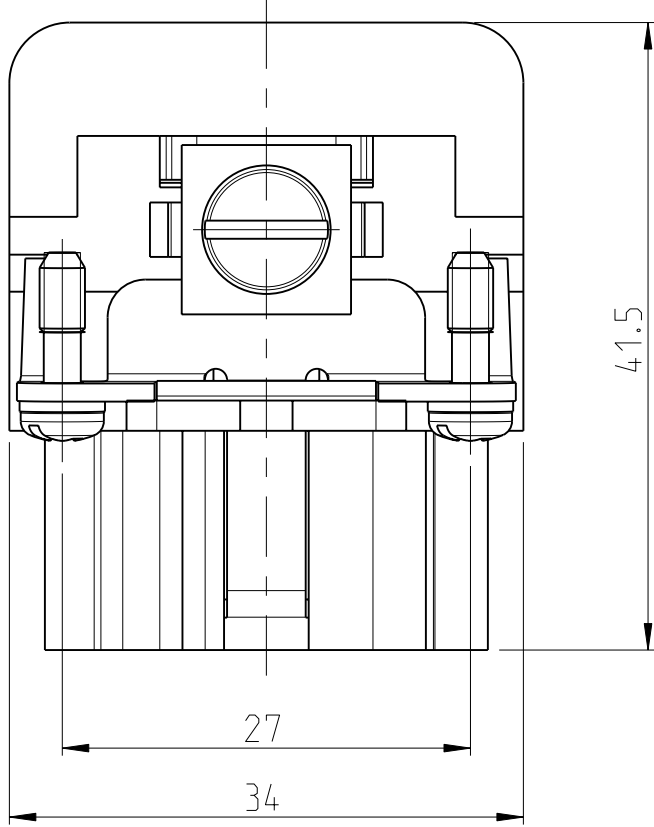
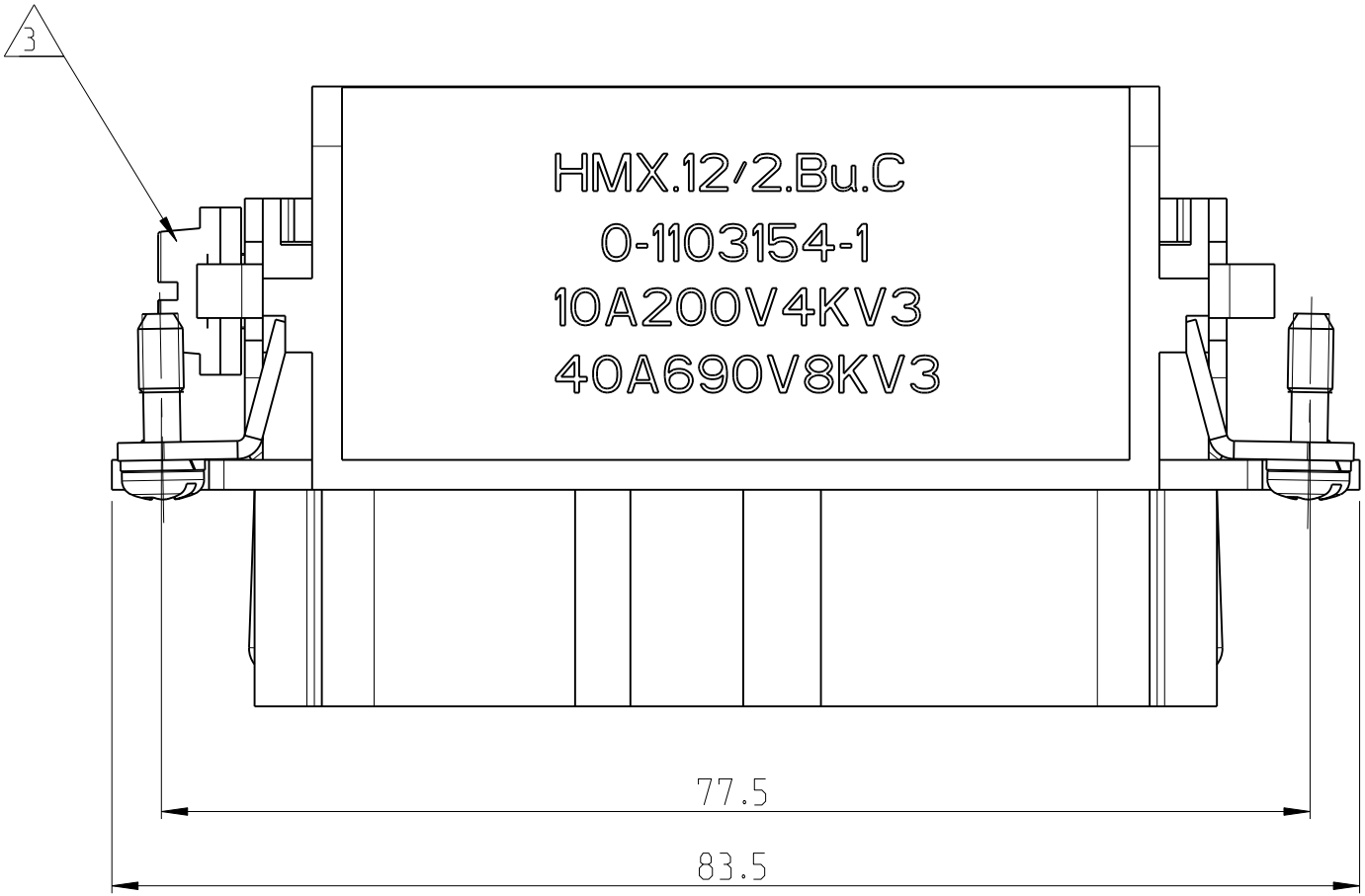
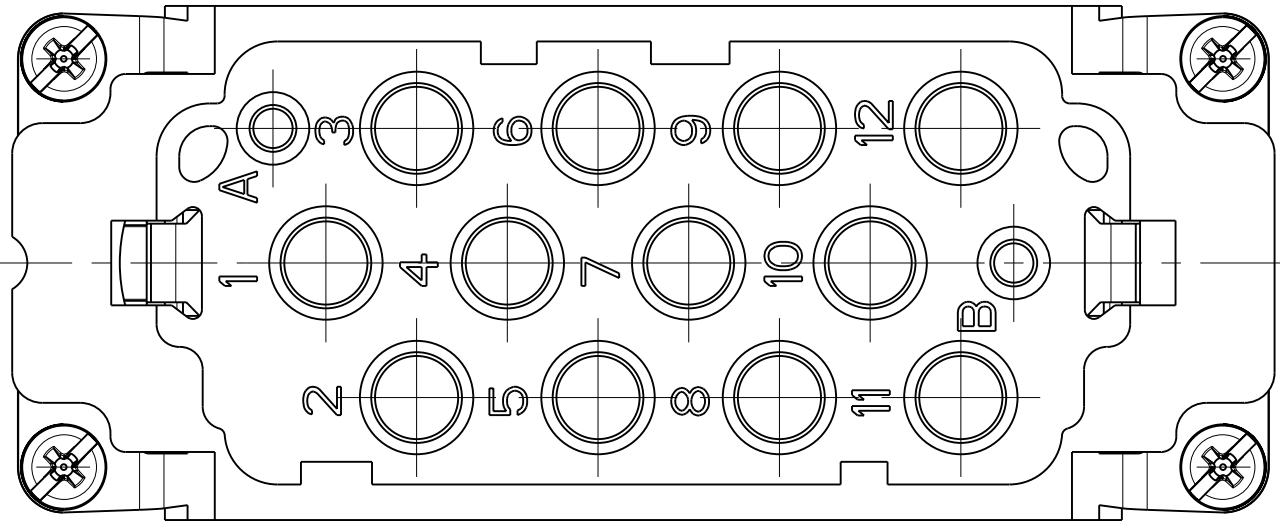
[Email or Chat With Us](#)  
[Find a Phone Number](#)  
[Knowledge Base](#)  
[Manage Your Account](#)

### Keep Me Informed

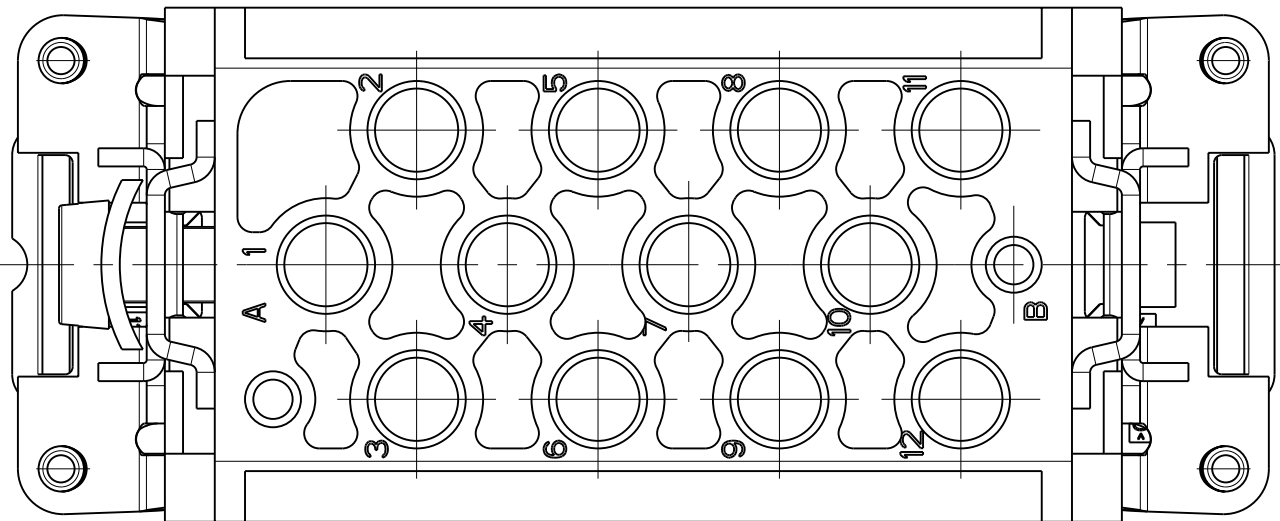


LOC		DIST		REVISIONS			
P	LYR	DESCRIPTION		DATE	DWN	APVD	
B1		ECR-09-026756		04FEB2010	SR	ME	

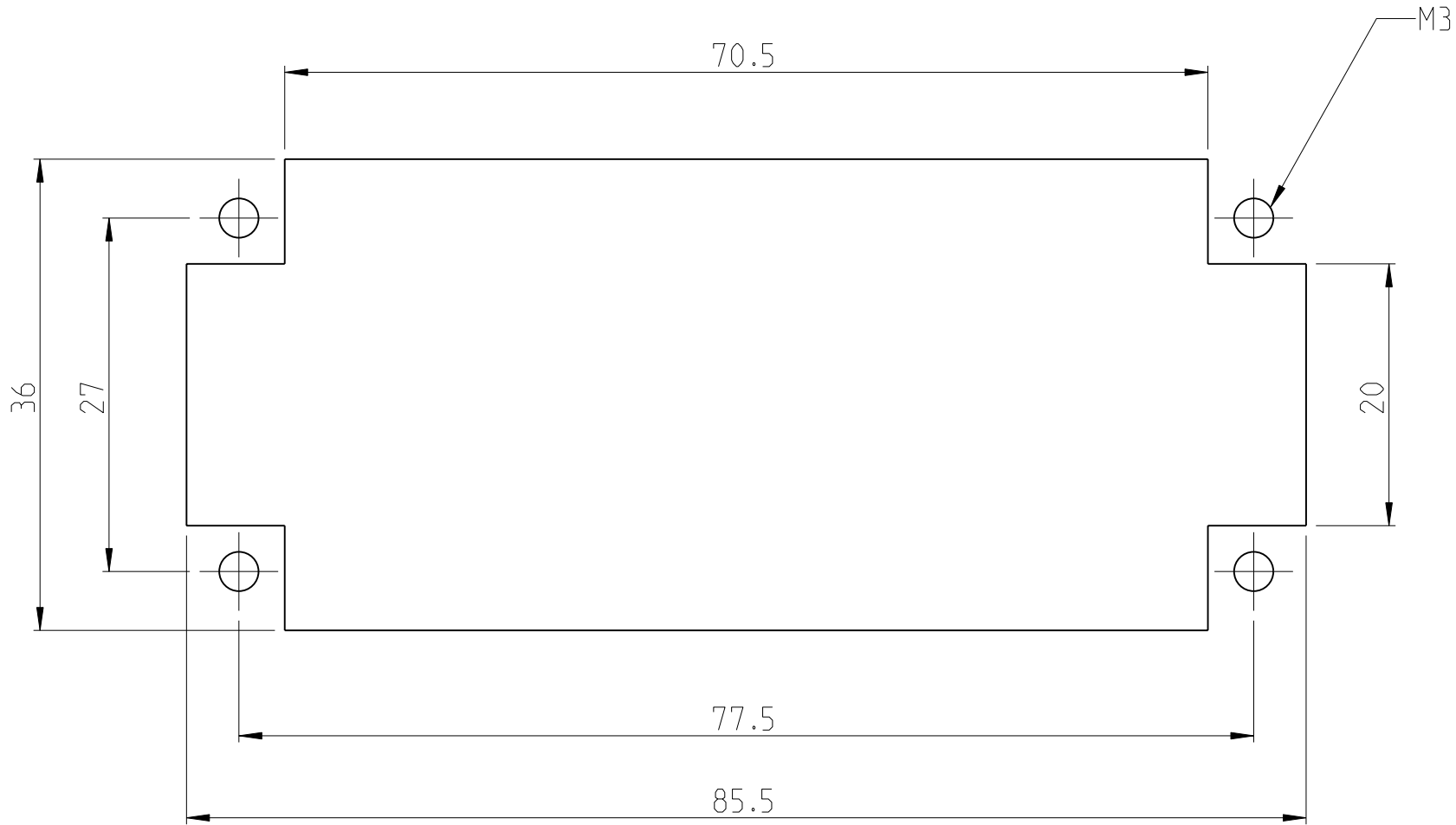
CONTACT ARRANGEMENT VIEW FROM  
TERMINATION SIDE



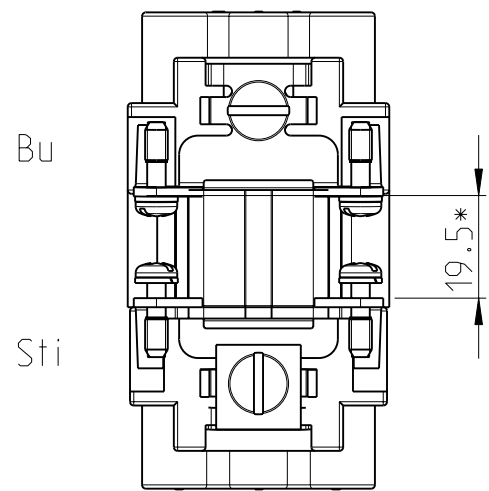
CONTACT ARRANGEMENT VIEW FROM  
CONNECTING SIDE



PANEL CUT-OUT FOR CONTACT INSERT  
WHEN USED WITHOUT HOUSING

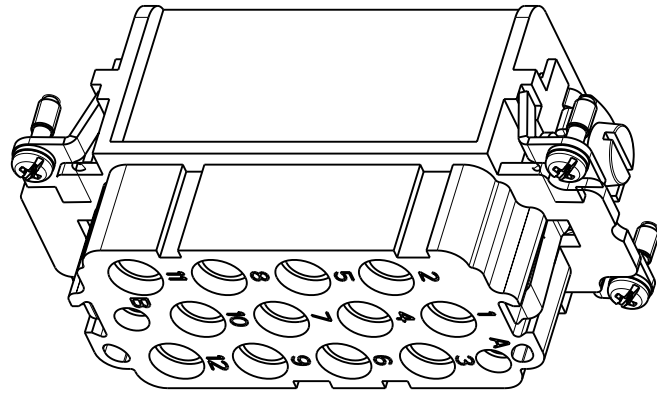
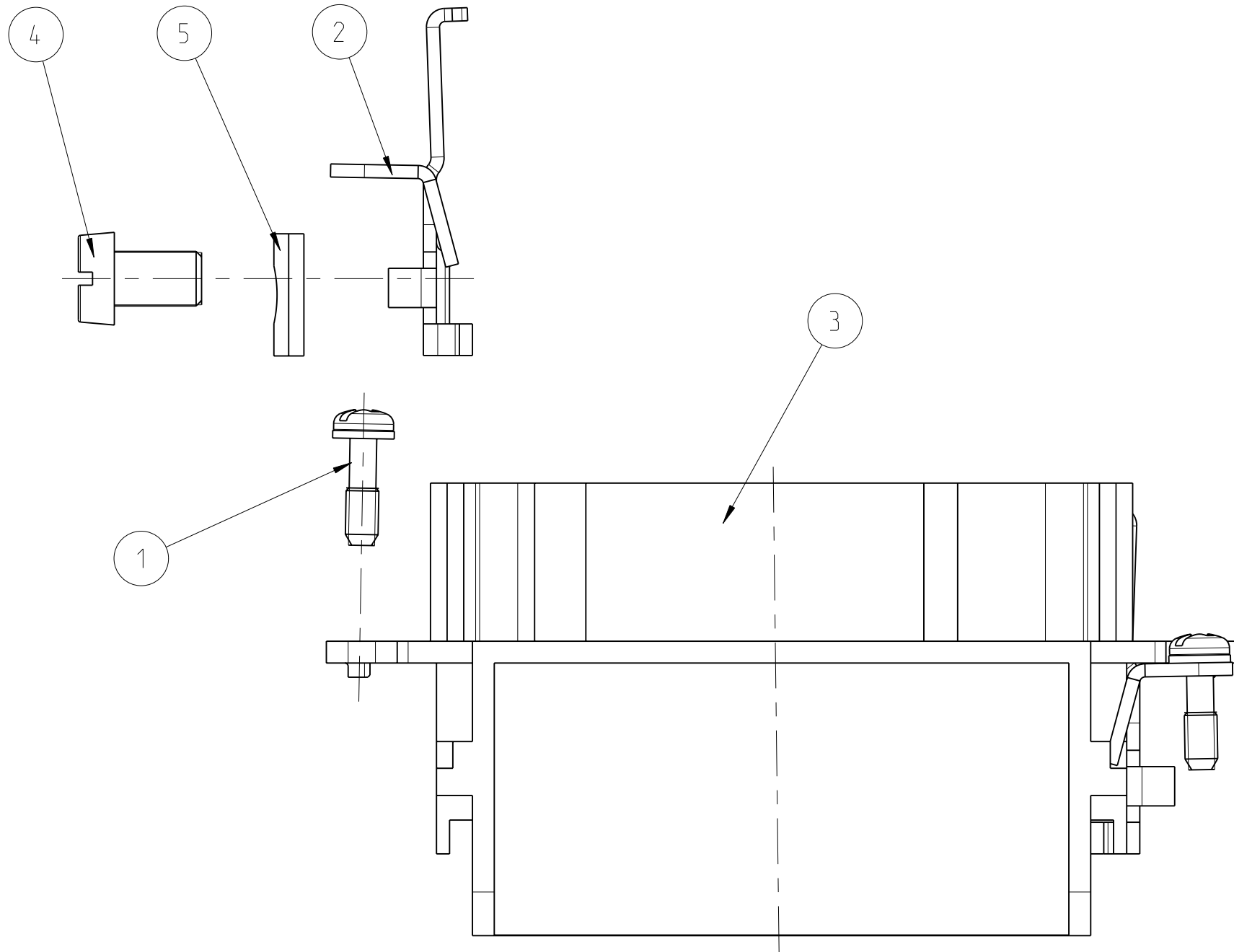


•DISTANCE ARRANGEMENT  
VIEW FROM TERMINATION SIDE



NOTES

- 1 POVER CONTACT : 1 TO 12  
OUTER DIMENSIONS OF INSULATION: MAX. Ø6.5mm  
SIGNAL CONTACT: A AND B  
OUTER DIMENSIONS OF INSULATION: MAX. Ø3.2mm
- 2 SUITABLE HOOD SIZE 6  
SERIES HB, HD, EMV, AND HIP
- △ GROUNDING CONTACT
- 4 STANDARDS:  
DIN EN 61984; DIN EN 60664-1
- 5 PACKAGING:  
5 PIECES IN A CARTON BOX



1	CLIP TAB	STEEL	NICKEL PLATED	5
1	CYLINDER SCREW , M5	STEEL	NICKEL PLATED	4
1	FEMALE INSERT	PBT GF30	VDI 3400-24	3
2	GRUNDING CONTACT-SOCKET	BRASS	Cu/Ni 5b	2
4	FIXING SCREW	STEEL	Ni	1
QTY	DESCRIPTION	MATERIAL	SURFACE	ITEM
0-1	HMX.12/2.Bu.C			

THIS DRAWING IS A CONTROLLED DOCUMENT.		DWN R.SCHNEIDER	04FEB2010	TE Connectivity	
		CHK T.SCHNURPFEL	04FEB2010		
DIMENSIONS:				NAME	
mm				FEMALE INSERT ASSY HMX.12/2.Bu.C FEMALE INSERT ASSY	
		TOLERANCES UNLESS OTHERWISE SPECIFIED:		PRODUCT SPEC	
		0 PLC ±		APPLICATION SPEC	
		1 PLC ±		WEIGHT	
		2 PLC ±		CUSTOMER DRAWING	
MATERIAL		FINISH		SIZE	
-		-		A1 00779 C=1103154	
				RESTRICTED TO	
				SCALE 5:1 SHEET 1 OF 1 REV B1	