

4

3

2

1

THIS DRAWING IS UNPUBLISHED
QUESTO DISEGNO NON DEVE ESSERE DIVULGATO O RIPRODOTTO

RELEASED FOR PUBLICATION
E' CONSENTITA LA DIVULGAZIONE

2003

© COPYRIGHT 2003 Tyco Electronics AMP GmbH
TUTTI I DIRITTI SONO RISERVATI

LOC
1

DIST
-

REVISIONS
REVISIONI

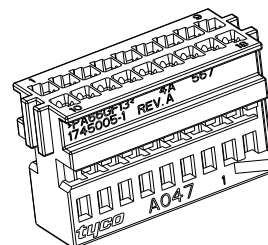
P	LTR	REV	DESCRIPTION DESCRIZIONE	DATE DATA	OWN DIS.	APVD APP.
0			EMISSIONE PRELIMINARE (PRELIMINARY ISSUE)	07MAR2003	M.S.	O.C.
1			ERA (WAS) P/N 03-51039-3	04NOV2003	M.S.	O.C.
A			PRIMA EMISSIONE (FIRST ISSUE) ET00-0043-04	11JUN2004	M.P.	O.C.
A1			RIASCIATO IN PRODUZIONE (RELEASED FOR PRODUCTION) ET00-0239-04	04FEB2005	M.P.	O.C.
A2			ECR-11-017843	05SEP2011	M.P.	O.C.

**NOTES:
(NOTE)**

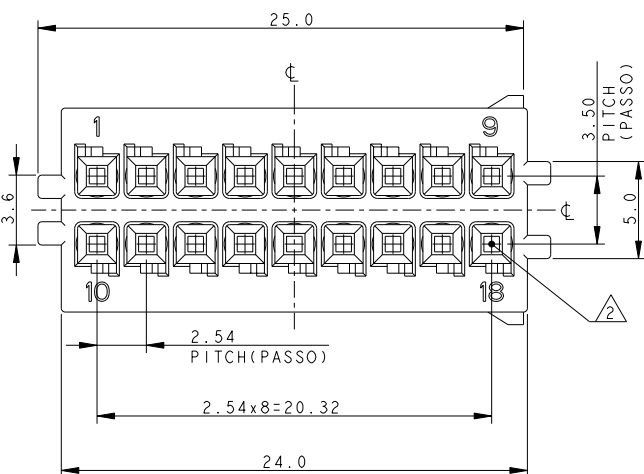
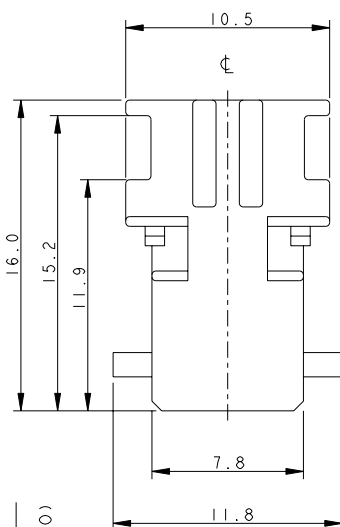
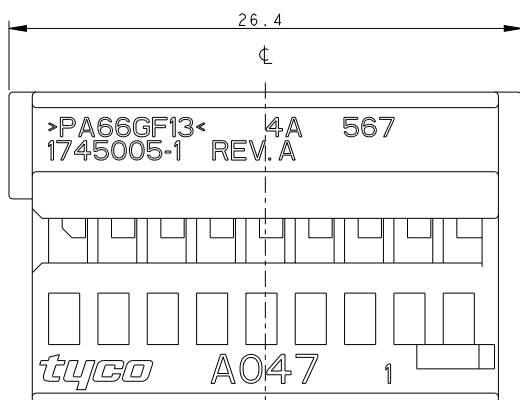
1) HOUSING MATERIAL: PA66 GF COLOUR BLACK
(MATERIALE BLOCCHETTO: PA66 CARICATO VETRO
COLORE NERO)

2) CAVITIES SUITABLE FOR REC. MQS CONTACT
P/N 928999-1
(CAVITA' ADATTE PER CONTATTO FEMMINA MQS
P/N 928999-1)

3) HOUSING SUITABLE FOR FRAME 18 POSITIONS
P/N 1745003-1
(PORTAFEMMINE ADATTO PER CORAZZA 18
POSIZIONI P/N 1745003-1)



**P/N 1745005-1 BLACK AS SHOWN
(NERO COME MOSTRATO)**



THIS DRAWING IS A CONTROLLED DOCUMENT. QUESTO DISEGNO È UN DOCUMENTO DI PROPRIETÀ E RESPONSABILITÀ DELL'AMP INCORPORATED. È SOGGETTO A VARIAZIONI. PER OTTENERE L'ULTIMA REVISIONE DEL DISEGNO CONTATTARE IL SERVIZIO TECNICO RESPONSABILE.		OWN/DIS. M. SARDI	07MAR2003	STE TE Connectivity
DIMENSIONS: DIMENSIONI: mm		CHK/CONT. O. CANUTO	07MAR2003	
	TOLERANCES UNLESS OTHERWISE SPECIFIED: TOLLERANZE SE NON DIVERSAMENTE SPECIFICATO	APVD/APP. A. GENTA	07MAR2003	NAME 18 POS. MQS RECEPTACLE HOUSING PITCH 2.54mm (PORTAFEMMINE MQS 18 VIE PASSO 2.54mm)
		FINISH FINITURA	PRODUCT SPEC SPEC DI PRODOTTO: 108-20182	
MATERIAL MATERIALE		APPLICATION SPEC SPEC DI APPLICAZIONE 411-20056	WEIGHT PESO -	CAGE CODE DRAWING NO 1745005
		CUSTOMER DRAWING	DISEGNO PER CLIENTE SOLO PER RIFERIMENTO	RESTRICTED TO -
			SCALE SCALA 5:1	SHEET FOGLIO 1
				OF DI 2
				REV A2

1470-19 (3/11)

Pro/ENGINEER DRAWING

4

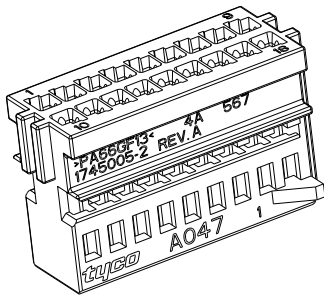
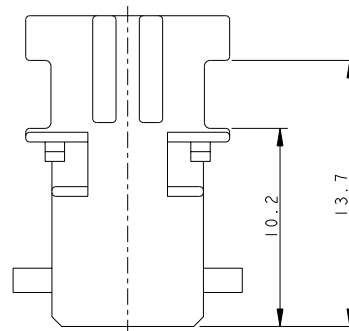
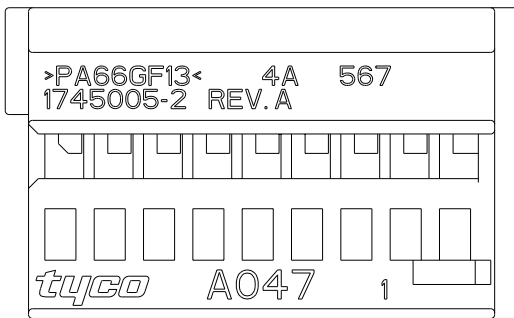
3

2

1

THIS DRAWING IS UNPUBLISHED. RELEASED FOR PUBLICATION 2003
 © COPYRIGHT 2003 Tyco Electronics AMP GmbH ALL RIGHTS RESERVED.

LOC	DIST	REVISIONS				
P	LTR	DESCRIPTION	DATE	DNW	APVD	
-		SEE SHEET 1	-	-	-	



SCALE 3:1

3) HOUSING SUITABLE FOR FRAME 18 POSITIONS
 P/N 1745003-2
 (PORTAFEMMINE ADATTO PER CORAZZA 18
 POSIZIONI P/N 1745003-2)

P/N 1745005-2 COLOUR GRAY AS SHOWN
 (COLORE GRIGIO COME MOSTRATO)

FOR MISSING DIMENSIONS AND NOTES SEE P/N 1745005-1 (SHEET 1/2)
 (PER LE DIMENSIONI E NOTE MANCANTI VEDI P/N 1745005-1 (FOGLIO 1/2))

THIS DRAWING IS A CONTROLLED DOCUMENT.		OWN M. SARDI 07MAR2003	TE Connectivity	
DIMENSIONS: mm		CHK O. CANUTO 07MAR2003		
TOLERANCES UNLESS OTHERWISE SPECIFIED: 0 PLC ±0.5 1 PLC ±0.3 2 PLC ±0.2 3 PLC ± 4 PLC ± ANGLES ±°		APVD A. GENTA 07MAR2003	NAME 18 POS. MOS RECEPTACLE HOUSING PITCH 2.54mm (PORTAFEMMINE MOS 18 VIE PASSO 2.54mm)	
		PRODUCT SPEC 108-20182	RESTRICTED TO	
MATERIAL		APPLICATION SPEC 411-20056	SIZE A3	CAGE CODE 00779
FINISH		WEIGHT -	DRAWING NO C-1745005	
		CUSTOMER DRAWING		SCALE 5:1 SHEET 2 OF 2 REV A2