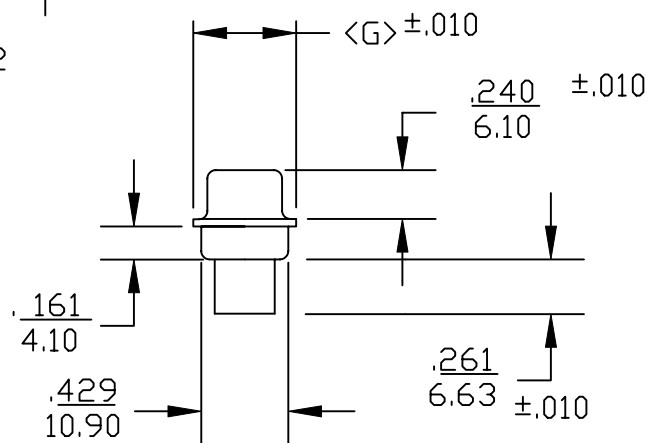
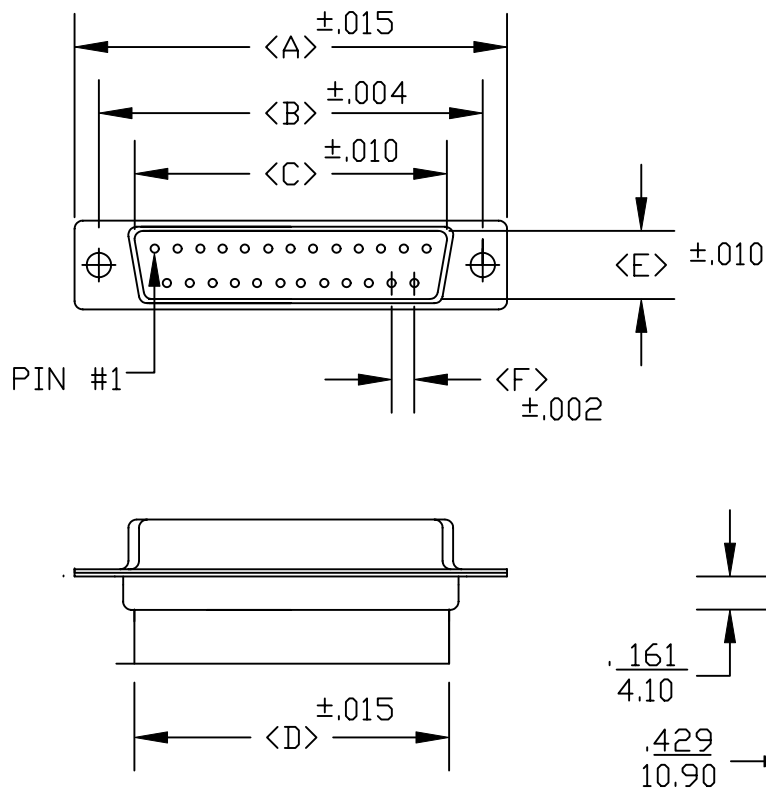


DESCRIPTION: **D-SUB MALE CRIMP & POKE**

POS	A	B	C	D	E	F	G
09	1.213 30.80	.984 24.99	.666 16.92	.756 19.20	.329 8.36	.109 2.77	.496 12.60
15	1.5413 39.15	1.312 33.32	.994 25.25	1.091 27.70	.329 8.36	.109 2.77	.496 12.60
25	2.087 53.00	1.852 47.04	1.534 38.96	1.618 41.10	.329 8.36	.109 2.77	.496 12.60
37	2.732 69.30	2.50 63.50	2.181 55.42	2.256 57.30	.329 8.36	.109 2.77	.496 12.60
50	2.638 67.00	2.406 61.00	2.079 52.80	2.169 55.10	.436 11.07	.109 2.77	.602 15.30



170-XXX-173L000

SERIES _____
 POSITIONS _____
 009
 015
 025
 037
 050
 GENDER _____
 1 = MALE
 2 = FEMALE
 TERMINATION _____
 7 = CRIMP/POKE
 SHELL PLATING _____
 3 = NICKEL

HARDWARE OPTIONS _____
 00 = NO HARDWARE
 01 = .098 4-40 CLINCH NUT (BOARD SIDE)
 02 = .250 4-40 CLINCH NUT (BOARD SIDE)
 03 = .250 4-40 CLINCH NUT (MATING SIDE)
 91 = .225 4-40 SPACER/BOARD LOCK

PLATING OPTIONS _____
 0 = NO CONTACTS


SPECIFICATIONS:

MATERIALS:

SHELL: STEEL, NICKEL PLATED
 INSULATOR: UL 94V-0 RATED BLACK PBT +30% FIBER-GLASS
 RoHS COMPLIANT

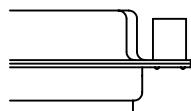
ELECTRICALS:

CURRENT RATING: 5 AMPS
 CONTACT RESISTANCE: 15 mOHMS MAX
 INSULTOR RESISTANCE: 1000 MOHMS MIN
 VOLTAGE: 500V AC FOR 1 MINUTE
 TEMPERATURE: -50°C TO +100°C

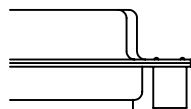
	THESE DRAWINGS AND SPECIFICATIONS ARE THE PROPERTY OF NorComp AND SHALL NOT BE REPRODUCED, COPIED OR USED AS THE BASIS FOR THE MANUFACTURE OR SALE OF APPARATUS WITHOUT WRITTEN PERMISSION.		DRAWN: PAM JENKINS	DATE: 7-25-05
			CHECKED:	DATE:
<h1>NorComp</h1>		SCALE:	SHEET OF	REV 1
		DWG NO.		

DESCRIPTION: CLINCH NUT HARDWARE

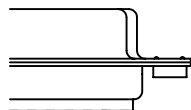
ALL CLINCH-NUTS ARE 4-40 INTERNAL THREADS



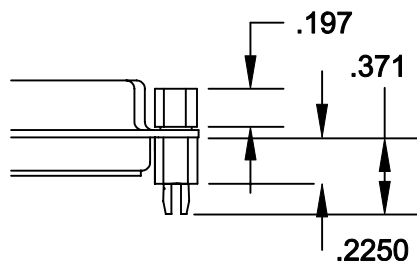
03X..... .250" (MATING SIDE) - CN8



02X250" (BOARD SIDE) - CN2



01X098" (BOARD SIDE) - CN1



91X225" (BOARD SIDE) - .197 MATING SIDE - CN10/SFS0440

NOTE: 4-40 FEMALE SCREW LOCK IS REMOVABLE



THESE DRAWINGS AND SPECIFICATIONS ARE THE PROPERTY OF NorComp AND SHALL NOT BE REPRODUCED, COPIED OR USED AS THE BASIS FOR THE MANUFACTURE OF SALE OF APPARATUS WITHOUT WRITTEN PERMISSION.

DRAWN:
WAYNE ROBBINS

DATE:
8-23-98

CHECKED:
PAM JENKINS

DATE:
8-24-98

NorComp

SCALE:	SHEET 1 OF 1	REV 3
--------	--------------	-------

DWG NO. CLINCH-NUT OPTIONS