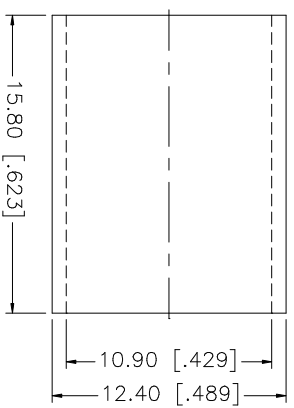
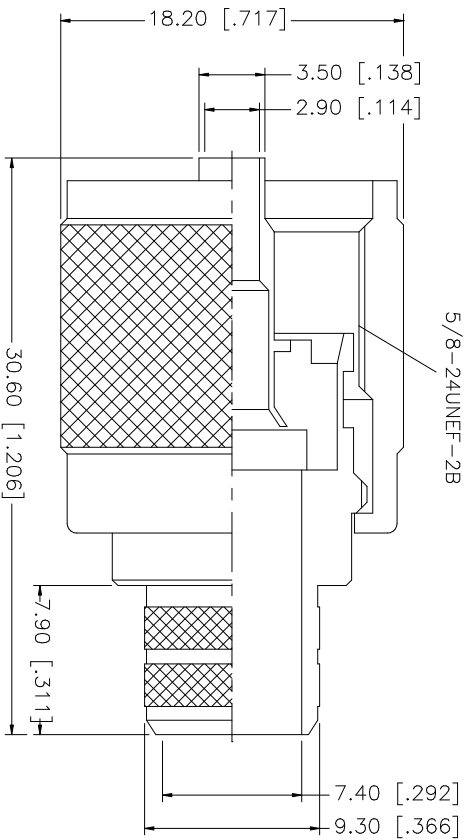
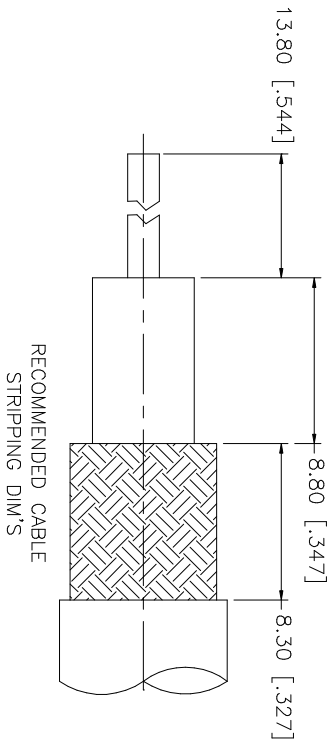


| REV. | DATE | DESCRIPTION |
|------|----------|-----------------|
| NC | 04/14/03 | INITIAL RELEASE |



- NOTE:
1. CRIMPED FERRULE
HEX CRIMP SIZE .429"
 2. CRIMPED CONTACT PIN
HEX CRIMP SIZE 118"

| 8 | | | | | | | | | | | | | | | | | | | | |
|--|-------------|----------|--------|-----|--|--|--|--|--|--|--|--|--|--|--|--|--|--|--|--|
| 8 | | | | | | | | | | | | | | | | | | | | |
| 7 | | | | | | | | | | | | | | | | | | | | |
| 6 | | | | | | | | | | | | | | | | | | | | |
| 5 | | | | | | | | | | | | | | | | | | | | |
| 4 | FERRULE | COPPER | NICKEL | 1 | | | | | | | | | | | | | | | | |
| 3 | CONTACT PIN | BRASS | GOLD | 1 | | | | | | | | | | | | | | | | |
| 2 | INSULATOR | PHENOLIC | YELLOW | 1 | | | | | | | | | | | | | | | | |
| 1 | BODY | BRASS | NICKEL | 1 | | | | | | | | | | | | | | | | |
| | DESCRIPTION | MATERIAL | FINISH | QTY | | | | | | | | | | | | | | | | |
| UNLESS OTHERWISE SPECIFIED DIMENSIONS ARE IN MILLIMETERS, DIMENSIONS IN [] ARE IN INCHES AND FOR CUSTOMER REFERENCE ONLY. | | | | | UNLESS OTHERWISE SPECIFIED DIMENSIONS ARE IN MILLIMETERS, DIMENSIONS IN [] ARE IN INCHES AND FOR CUSTOMER REFERENCE ONLY. | | | | | UNLESS OTHERWISE SPECIFIED DIMENSIONS ARE IN MILLIMETERS, DIMENSIONS IN [] ARE IN INCHES AND FOR CUSTOMER REFERENCE ONLY. | | | | | UNLESS OTHERWISE SPECIFIED DIMENSIONS ARE IN MILLIMETERS, DIMENSIONS IN [] ARE IN INCHES AND FOR CUSTOMER REFERENCE ONLY. | | | | | |
| TOLERANCES FOR MILLIMETERS ARE: | | | | | TOLERANCES FOR MILLIMETERS ARE: | | | | | TOLERANCES FOR MILLIMETERS ARE: | | | | | TOLERANCES FOR MILLIMETERS ARE: | | | | | |
| 0.5 - 8mm ± 0.20mm | | | | | 0.5 - 8mm ± 0.20mm | | | | | 0.5 - 8mm ± 0.20mm | | | | | 0.5 - 8mm ± 0.20mm | | | | | |
| 8 - 30mm ± 0.40mm | | | | | 8 - 30mm ± 0.40mm | | | | | 8 - 30mm ± 0.40mm | | | | | 8 - 30mm ± 0.40mm | | | | | |
| 30 - 120mm ± 0.50mm | | | | | 30 - 120mm ± 0.50mm | | | | | 30 - 120mm ± 0.50mm | | | | | 30 - 120mm ± 0.50mm | | | | | |
| UNLESS OTHERWISE SPECIFIED TOLERANCES FOR INCHES ARE: | | | | | UNLESS OTHERWISE SPECIFIED TOLERANCES FOR INCHES ARE: | | | | | UNLESS OTHERWISE SPECIFIED TOLERANCES FOR INCHES ARE: | | | | | UNLESS OTHERWISE SPECIFIED TOLERANCES FOR INCHES ARE: | | | | | |
| .020 - .315 = ± 0.007" | | | | | .020 - .315 = ± 0.007" | | | | | .020 - .315 = ± 0.007" | | | | | .020 - .315 = ± 0.007" | | | | | |
| .315 - 1.180 = ± 0.015" | | | | | .315 - 1.180 = ± 0.015" | | | | | .315 - 1.180 = ± 0.015" | | | | | .315 - 1.180 = ± 0.015" | | | | | |
| 1.180 - 4.724 = ± 0.020" | | | | | 1.180 - 4.724 = ± 0.020" | | | | | 1.180 - 4.724 = ± 0.020" | | | | | 1.180 - 4.724 = ± 0.020" | | | | | |
| DO NOT SCALE DRAWING | | | | | DO NOT SCALE DRAWING | | | | | DO NOT SCALE DRAWING | | | | | DO NOT SCALE DRAWING | | | | | |
| APPROVALS | | | | | DATE | | | | | APPROVALS | | | | | DATE | | | | | |
| DRAWN G.R.S. | | | | | 04/14/03 | | | | | DRAWN G.R.S. | | | | | 04/14/03 | | | | | |
| CHECKED | | | | | | | | | | CHECKED | | | | | | | | | | |
| ISSUED | | | | | | | | | | ISSUED | | | | | | | | | | |
| SHEET 1 OF 1 | | | | | | | | | | SHEET 1 OF 1 | | | | | | | | | | |
| CAD FILE C:/182/182130.DWG | | | | | | | | | | CAD FILE C:/182/182130.DWG | | | | | | | | | | |
| PART DESCRIPTION UHF CRIMP PLUG (FOR BELDEN 8214, 9913, 9914, LMR400 CABLE) | | | | | PART NO. 182130 | | | | | PART DESCRIPTION UHF CRIMP PLUG (FOR BELDEN 8214, 9913, 9914, LMR400 CABLE) | | | | | PART NO. 182130 | | | | | |
| DWG. NO. 182130.DWG | | | | | REV. NC | | | | | DWG. NO. 182130.DWG | | | | | REV. NC | | | | | |
| SIZE A | | | | | SCALE NA | | | | | SIZE A | | | | | SCALE NA | | | | | |

Amphenol Connex

Mouser Electronics

Authorized Distributor

Click to View Pricing, Inventory, Delivery & Lifecycle Information:

[Amphenol:](#)

[182130](#)