

Figure 1

1. INTRODUCTION

This document provides installation procedures for the SL Series Office Box Kits listed in Figure 1. These office box kits will accept various combinations of SL Series Shielded and Unshielded Jacks, MT-RJ Outlet Jacks, and SL Series Multimedia Inserts.

NOTE



Dimensions in this instruction sheet are in millimeters [with inch equivalents in brackets]. Figures and illustrations are for reference only and are not drawn to scale.

NOTE



Refer to Tyco Electronics AMP NETCONNECT product catalog for a listing of available jacks and inserts.

2. DESCRIPTION

The SL Series Office Box Kits are available in 2- and 4-port versions. The kits will cover furniture openings

with a maximum cutout of 48.26 x 76.2 mm [1.900 x 3.000 in.]. Each kit includes a cover, base, extender, foam tape, and two self-tapping screws. The kits are available in five standard colors: light almond, black, white, gray, and electrical ivory. The extender features a 19.81 mm wide x 12.19 mm high [.780 in. wide x .480 in. high] breakout for rear cable dress to accommodate various manufacture raceways.

3. MOUNTING PROCEDURES

Determine the following:

1. Desired mounting method
2. Office box and cable exit location
3. Raceway location (if applicable)

Mounting options are: self-tapping screw or double-faced foam tape.

NOTE

If using raceway, remove the rear breakout from extender.

NOTE

If mounting over a furniture outlet opening, use the extender as a gauge to ensure the furniture opening is fully covered once fully assembled.

3.1. Self-Tapping Screw Mounting

1. Position the office box base in the desired location. Mark and drill holes. (See note). Install the screw mounting anchors (customer supplied) if required.

NOTE

The appropriate hole size will vary according to the type of material used which best suits the particular application.

2. Align the base mount holes with the holes or mounting anchors. Install and tighten the screws until the box base is flat against the surface.

3.2. Foam Tape Mounting

1. Remove the protective adhesive paper from one side of the foam tape and place the tape on the bottom of the box base.

2. Remove the protective adhesive paper from the tape. Place the base in the desired location and push base against the flat clean surface to secure.

4. ASSEMBLY PROCEDURES**4.1. Jack and Insert Termination and Installation**

1. Route and pull 152 to 203 mm [6 to 8 in.] of appropriate cables through the furniture outlet opening or raceway.

2. Strip the cable jacket and terminate according to the jack or multi-media inserts to cable ends according to instructions packaged with the jacks or inserts.

3. Align the terminated jack or insert with deflecting latch facing downward.

NOTE

For 4-Port Kits, prebend the cable at rear of the jack opening for the two outside jacks so that the cable will exit through the extender opening when jacks are installed. Latch outside jacks first into the base by inserting the jack at a slight angle with stationary latch on the upper rail of the base. Gently pivot the jack until the deflecting latch engages onto the opposite rail and snaps into place. Position the cable through the extender opening. See Figure 2.

CAUTION

Do NOT exceed maximum bend radius as specified in TIA/EIA 568 Standards.



Figure 2

4. Align the terminated jacks in the center two port openings and repeat the latch procedure as needed. Allow the cable jacket to exit straight out the extender opening. See Figure 3.

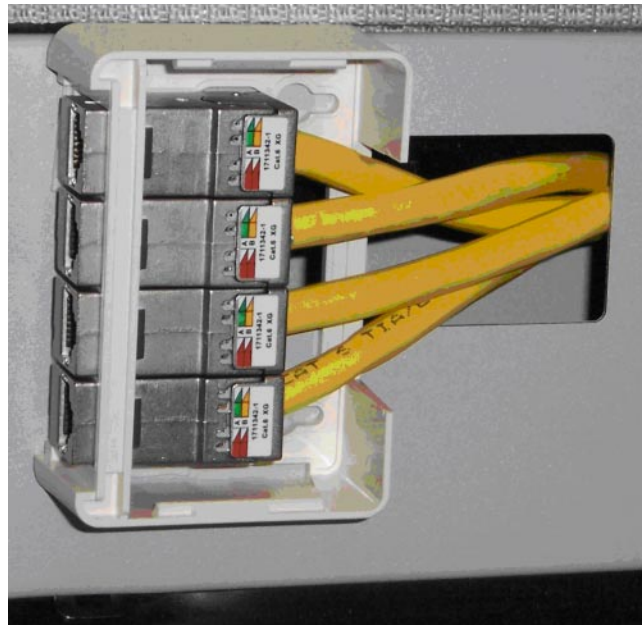


Figure 3

5. Using the extender as a gauge, mount the base with terminated jacks or inserts as described in Section 3, MOUNTING PROCEDURES.

NOTE

Push excess cable back into the raceway.



6. Assemble the extender on the rear of the base making sure the top of the extender is flush with the top of the base. See Figure 4.

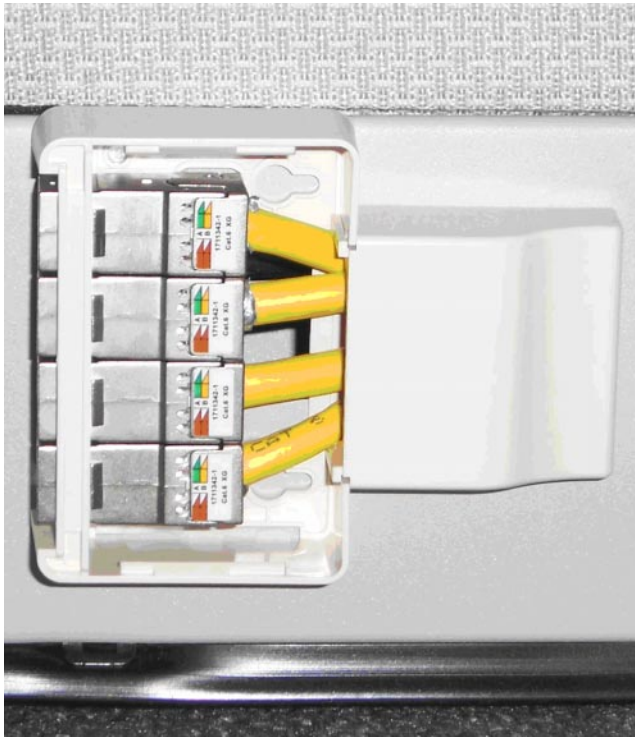


Figure 4

CAUTION



Ensure that the outer two cables do not hinder assembly of the extender or that the cable jacket is not damaged.

4.2. Cover Installation

Align the cover over the base and extender. Gently snap the cover down onto the base until the latches are secure. Icons may be installed into the cover at each port location if desired. An indented area in cover is provided for adhesive label placement. See Figure 5.

5. REMOVAL PROCEDURES

5.1. Cover Removal

Insert a small flat-bladed screwdriver into the slots provided on the cover and gently twist to lift the cover from the base.

CAUTION



Be careful not to damage the base or cover with the screwdriver blade.



Figure 5

5.2. Jack and Insert Removal

To remove a jack or insert from the base, insert a flat-bladed screwdriver tip under the deflecting latch and pry upward slightly to release the latch. Pull the jack or insert out of the base exiting the rear.

6. REPAIR/REPLACEMENT

CAUTION



Damaged product should not be used. If a damaged product is evident, it should be replaced with a new one.

7. REVISION SUMMARY

- Updated document to corporate requirements
- Deleted artwork from Figure 1 and replaced with new artwork
- Deleted table from Figure 1
- Deleted old Figures 2 and 3 and replaced with new photographs in Figures 2, 3, 4, and 5
- Deleted old text and added new text throughout