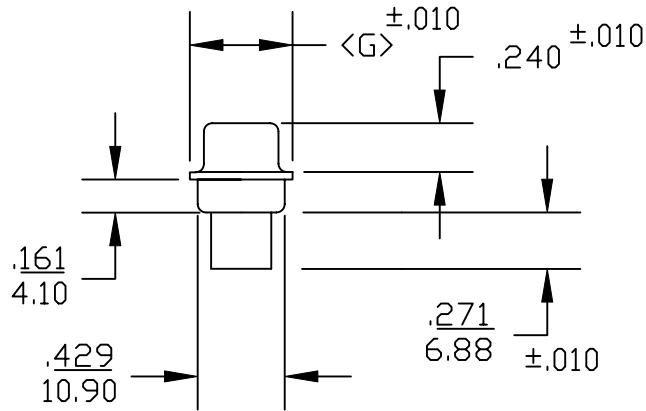
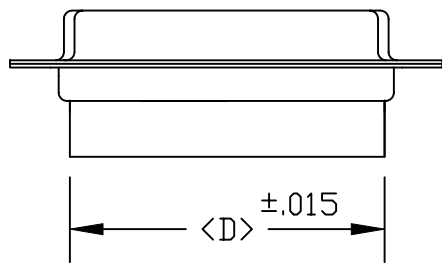
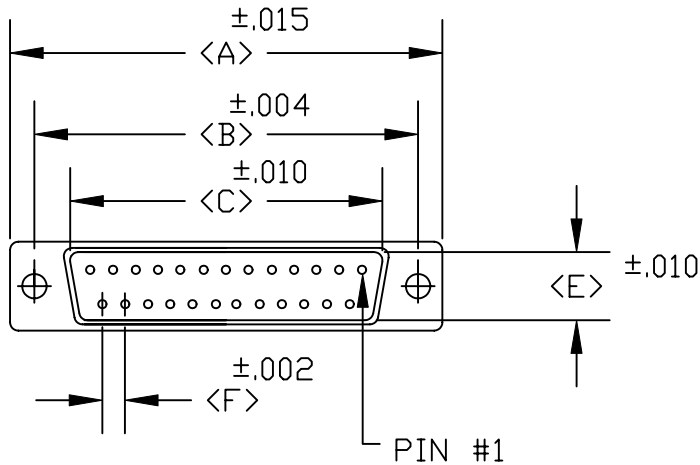


DESCRIPTION: **D-SUB FEMALE CRIMP & POKE**

POS	A	B	C	D	E	F	G
09	1.213 30.80	.984 24.99	.642 16.30	.756 19.20	.311 7.90	.109 2.77	.496 12.60
15	1.5413 39.15	1.312 33.32	.971 24.65	1.091 27.70	.311 7.90	.109 2.77	.496 12.60
25	2.087 53.00	1.852 47.04	1.512 38.40	1.618 41.10	.311 7.90	.109 2.77	.496 12.60
37	2.732 69.30	2.50 63.50	2.157 54.80	2.256 57.30	.311 7.90	.109 2.77	.496 12.60
50	2.638 67.00	2.406 61.00	2.055 52.20	2.169 55.10	.429 10.90	.109 2.77	.602 15.30



170-XXX-173L000

SERIES _____
 POSITIONS _____
 009
 015
 025
 037
 050
 GENDER _____
 1 = MALE
 2 = FEMALE
 TERMINATION _____
 7 = CRIMP/POKE
 SHELL PLATING _____
 3 = NICKEL

HARDWARE OPTIONS _____
 00 = NO HARDWARE
 01 = .098 4-40 CLINCH NUT BOARD SIDE
 02 = .250 4-40 CLINCH NUT BOARD SIDE
 03 = .250 4-40 CLINCH NUT MATING SIDE
 91 = .225 4-40 SPACER/BOARD LOCK

PLATING OPTIONS _____
 0 = NO CONTACTS

SPECIFICATIONS:

MATERIALS:

SHELL: STEEL, NICKEL PLATED

INSULATOR: UL 94V-O RATED BLACK PBT +30% FIBER-GLASS

RoHS COMPLIANT

ELECTRICALS:

CURRENT RATING: 5 AMPS

CONTACT RESISTANCE: 15 mOHMS MAX

INSULATOR RESISTANCE: 1000 MOHMS MIN

VOLTAGE: 500V AC FOR 1 MINUTE

TEMPERATURE: -50°C TO +100°C



THESE DRAWINGS AND SPECIFICATIONS ARE THE PROPERTY OF NorComp AND SHALL NOT BE REPRODUCED, COPIED OR USED AS THE BASIS FOR THE MANUFACTURE OR SALE OF APPARATUS WITHOUT WRITTEN PERMISSION.

DRAWN: **PAM JENKINS**

DATE: **7-28-05**

CHECKED:

DATE:

NorComp

SCALE:

SHEET OF

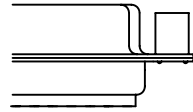
REV

DWG NO.

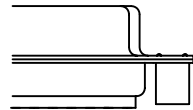
170-XXX-273L000

DESCRIPTION: CLINCH NUT HARDWARE

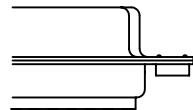
ALL CLINCH-NUTS ARE 4-40 INTERNAL THREADS



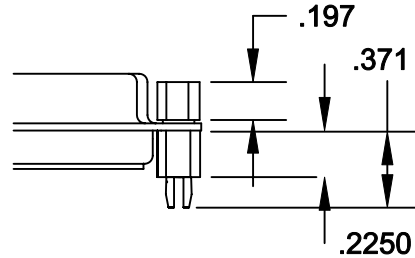
03X..... .250" (MATING SIDE) - CN8



02X250" (BOARD SIDE) - CN2



01X098" (BOARD SIDE) - CN1



91X225" (BOARD SIDE) - .197 MATING SIDE - CN10/SFS0440

NOTE: 4-40 FEMALE SCREW LOCK IS REMOVABLE



THESE DRAWINGS AND SPECIFICATIONS ARE THE PROPERTY OF NorComp AND SHALL NOT BE REPRODUCED, COPIED OR USED AS THE BASIS FOR THE MANUFACTURE OF SALE OF APPARATUS WITHOUT WRITTEN PERMISSION.

DRAWN: WAYNE ROBBINS		DATE: 8-23-98	
CHECKED: PAM JENKINS		DATE: 8-24-98	
SCALE:	SHEET 1	OF 1	REV 3
DWG NO. CLINCH-NUT OPTIONS			

NorComp