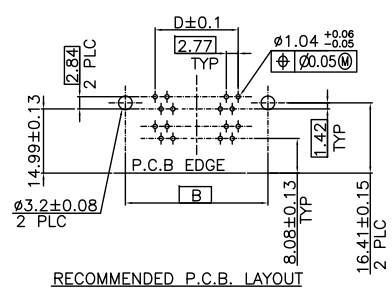
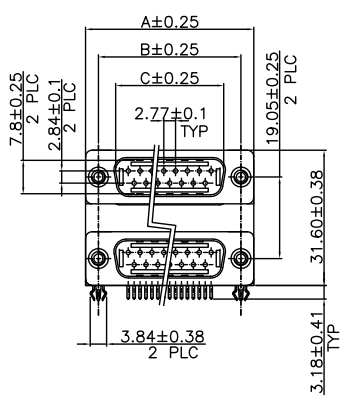
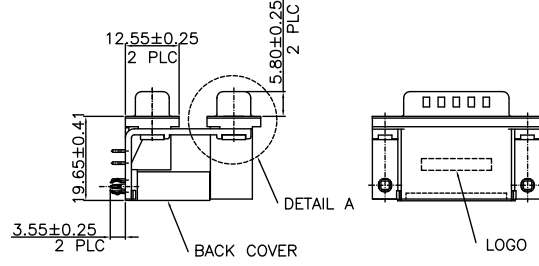
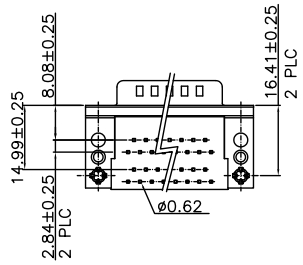


THIS DRAWING IS UNPUBLISHED. RELEASED FOR PUBLICATION AUG. 2008.
 © COPYRIGHT 2009 BY TYCO ELECTRONICS CORPORATION. ALL RIGHTS RESERVED.

LOC	DIST	REVISIONS			
P	LTR	DESCRIPTION	DATE	DWN	APVD
B1		REVISED (ECR-11-007799)	12APR11	JC	WK



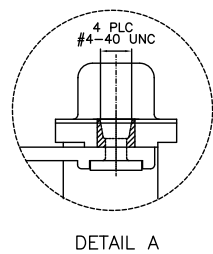
NOTES:
 ROHS 2002/95/EC COMPLIANT
 1. MATERIAL:
 1.1 HOUSING/BACK COVER: THERMOPLASTIC,UL94V-0; COLOR:SEE TABLE.
 1.2 CONTACTS : COPPER ALLOY
 1.3 BOARDLOCK : COPPER ALLOY
 1.3 BRACKET : ZINC ALLOY
 1.4 SHELL : STEEL
 2. FINISH:
 2.1 CONTACT:
 GOLD PLATING(SEE TABLE) ON CONTACT AREA.
 2.54µm[100µ"] MIN. MATTE TIN PLATING ON SOLDER TAIL AREA,
 1.27µm[50µ"] MIN. NICKEL UNDERPLATING OVERALL.
 2.2 BOARDLOCK:
 1.52µm[60µ"] MIN. MATTE TIN PLATING OVERALL.
 1.27µm[50µ"] MIN. NICKEL UNDERPLATED OVERALL.
 2.3 SHELL:
 1.52µm[60µ"] MIN. BRIGHT TIN PLATING OVERALL.
 3. WAVE SOLDER CAPABLE TO 265°C
 PER TE SPEC. 109-202, CONDITION B.
 ▲ OBSOLETE PART NUMBER.
 * CHOOSE PRE-FIX FROM LEFT TABLE AND SUFFIX FROM RIGHT TABLE FOR DESIRED PART NUMBER COMBINATION.



WITHOUT REAR COVER	BLACK	30 u"	11.08	16.92	24.99	30.95	9-9	1734279-7
REMARK	HSG COLOR	GOLD PLATING	D	C	B	A	PINS	PART NO.
			49.86	55.42	63.50	69.34	37-37	3-1734279-X
			33.24	38.96	47.04	53.10	25-25	2-1734279-X
			19.39	25.25	33.30	39.30	15-15	1-1734279-X
			11.08	16.92	24.99	30.95	9-9	1734279-X
	D	C	B	A	PINS			PART NO.

- 3-1734279-2
- 2-1734279-6
- 2-1734279-5
- 2-1734279-4
- 1-1734279-4
- 1-1734279-2
- 1-1734279-1
- 1734279-7
- 1734279-5
- ▲ OBSOLETE P/N

37-37 NOT AVAILABLE	PC99/ACTUAL COLOR	30 u"	X-1734279-6
	PC99/ACTUAL COLOR	10 u"	X-1734279-5
	PC99/ACTUAL COLOR	GOLD FLASH	X-1734279-4
	BLACK	30 u"	X-1734279-3
	BLACK	10 u"	X-1734279-2
	BLACK	GOLD FLASH	X-1734279-1
	HSG COLOR	GOLD PLATING	PART NO.

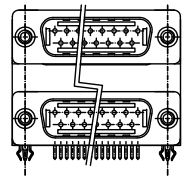


THIS DRAWING IS A CONTROLLED DOCUMENT.

DWN S1 HOU 15APR2005	TE Connectivity D-SUB STACKED PLUG OVER, PLUG, R/A TYPE, THREAD INSERTS
CHK W.J. KE 15APR2005	
APVD W.J. KE 15APR2005	
DIMENSIONS: MM	PRODUCT SPEC 108-57517
TOLERANCES UNLESS OTHERWISE SPECIFIED:	APPLICATION SPEC 501-57590
0 PLC ± -	WEIGHT - GRAMS
1 PLC ± 0.3	A3 00779 ©=1734279
2 PLC ± 0.2	CUSTOMER DRAWING
3 PLC ± -	SCALE - SHEET 1 of 3
4 PLC ± -	REV B1
ANGLES ± 3°	
MATERIAL SEE NOTE	
FINISH SEE NOTE	

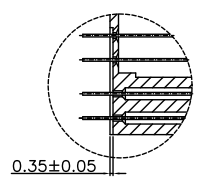
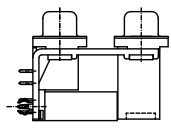
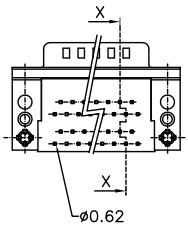
THIS DRAWING IS UNPUBLISHED. RELEASED FOR PUBLICATION AUG. 2008.
 © COPYRIGHT 2009 BY TYCO ELECTRONICS CORPORATION. ALL RIGHTS RESERVED.

LOC	DIST	REVISIONS			
P	LTR	DESCRIPTION	DATE	DWN	APVD
		SEE SHEET 1.			



PART NO.	PINS	A	B	C	D
7-1734279-X	37-37	69.34	63.50	55.42	49.86
6-1734279-X	25-25	53.10	47.04	38.96	33.24
5-1734279-X	15-15	39.30	33.30	25.25	19.39
4-1734279-X	9-9	30.95	24.99	16.92	11.08

X-1734279-6	30 u"	PC99/ACTUAL COLOR	37-37 NOT AVAILABLE
X-1734279-5	10 u"	PC99/ACTUAL COLOR	
X-1734279-4	GOLD FLASH	PC99/ACTUAL COLOR	
X-1734279-3	30 u"	BLACK	
X-1734279-2	10 u"	BLACK	
X-1734279-1	GOLD FLASH	BLACK	
PART NO.	GOLD PLATING	HSG COLOR	



SEC. X-X

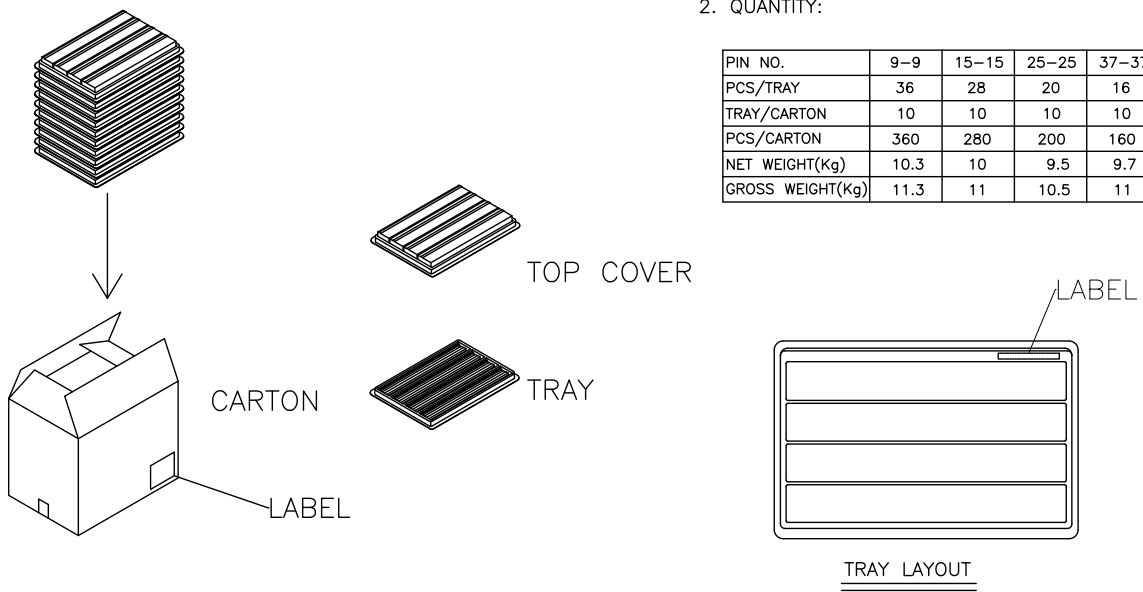
THIS DRAWING IS A CONTROLLED DOCUMENT.		DWN	TE Connectivity	
DIMENSIONS: MM		CHK	NAME	
TOLERANCES UNLESS OTHERWISE SPECIFIED:		APVD	D-SUB STACKED PLUG OVER, PLUG, R/A TYPE, THREAD INSERTS	
0 PLC ± -		PRODUCT SPEC	SIZE	CAGE CODE
1 PLC ± -		APPLICATION SPEC	A3	00779
2 PLC ± -		WEIGHT	DRAWING NO	
3 PLC ± -			C=1734279	
4 PLC ± -			RESTRICTED TO	
ANGLES ± -		CUSTOMER DRAWING	SCALE	SHEET
FINISH				2 OF 3
				REV B1

THIS DRAWING IS UNPUBLISHED. RELEASED FOR PUBLICATION AUG. 2008.
 © COPYRIGHT 2009 BY TYCO ELECTRONICS CORPORATION. ALL RIGHTS RESERVED.

LOC	DIST	REVISIONS			
P	LTR	DESCRIPTION	DATE	DWN	APVD
		SEE SHEET 1.			

NOTE :
 1. DIMENSION :
 TRAY : L=310, W=215, H=30
 CARTON : L=335, W=230, H=280
 2. QUANTITY:

PIN NO.	9-9	15-15	25-25	37-37
PCS/TRAY	36	28	20	16
TRAY/CARTON	10	10	10	10
PCS/CARTON	360	280	200	160
NET WEIGHT(Kg)	10.3	10	9.5	9.7
GROSS WEIGHT(Kg)	11.3	11	10.5	11



THIS DRAWING IS A CONTROLLED DOCUMENT.		DWN	TE Connectivity	
DIMENSIONS: MM		CHK	NAME	
TOLERANCES UNLESS OTHERWISE SPECIFIED:		APVD	D-SUB STACKED PLUG OVER, PLUG, R/A TYPE, THREAD INSERTS	
0 PLC ± -		PRODUCT SPEC	SIZE	
1 PLC ± -		APPLICATION SPEC	CAGE CODE	
2 PLC ± -		WEIGHT	DRAWING NO	
3 PLC ± -			RESTRICTED TO	
4 PLC ± -			A3 00779 C=1734279	
ANGLES ± -		CUSTOMER DRAWING	SCALE	SHEET 3 of 3
MATERIAL FINISH				REV B1