

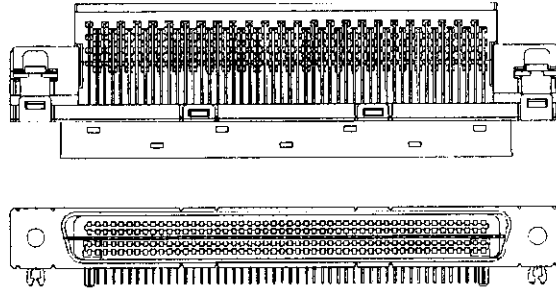


**Personal Systems Products**  
**Computer Industry**

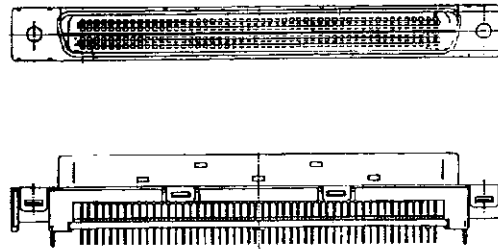
**Docking Connectors**

**.050 [1.27] Thru-Hole  
Connectors (CHAMP)  
(Continued)**

**240 Position Right Angle Plug with Retention Legs**  
**Part No. 4-11253-2**



**240 Position Vertical Plug with Retention Legs**  
**Part No. 179140-3**

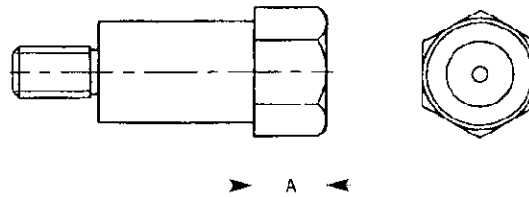


Personal Systems Products  
Docking Connectors

**Hardware - Docking  
Connectors**

**Material and Finish:**  
Brass, nickel plate

**Guide Sockets**



Dimension A (mm)	Internal Chamber	Part Number
2.22	30°	177728-1
3.5	45°	0-11355-1

**Guide Pin**

**Part No. 177734-1**



**Note:**  
BLUE part numbers indicate 2D  
geometry and 3D CAD models  
that are included on CD-ROM.