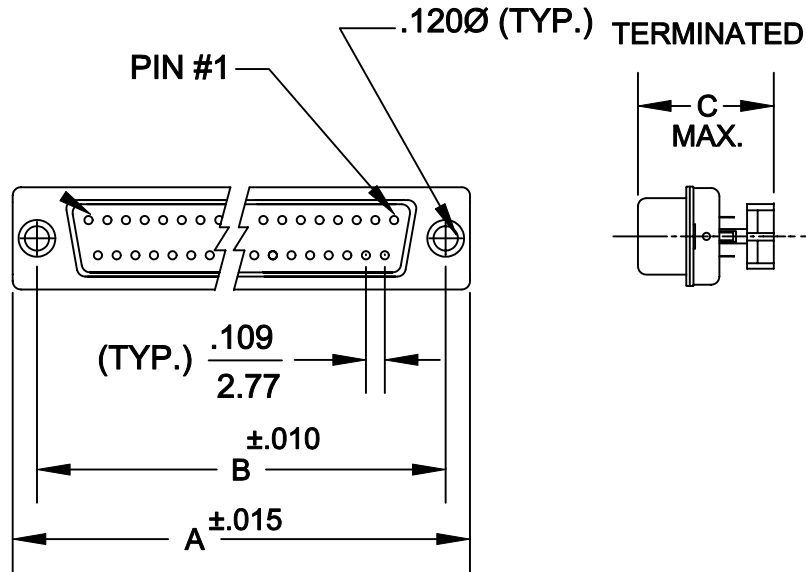
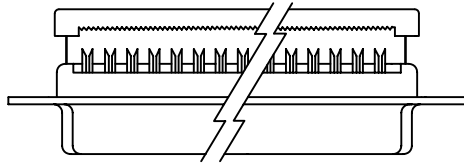


DESCRIPTION: LOW PROFILE FLAT RIBBON CONNECTOR



| | A | B | C NO S/R | C WITH S/R |
|----|----------------|----------------|---------------|---------------|
| 9 | 1.213 30.81 | .984 25.00 | .610 15.49 | .730 18.54 |
| 15 | 1.541 39.14 | 1.312 33.33 | .610 15.49 | .730 18.54 |
| 25 | 2.088 53.04 | 1.852 47.04 | .610 15.49 | .730 18.54 |
| 37 | 2.729 69.32 | 2.500 63.50 | .610 15.49 | .730 18.54 |

184-XXX-X93LXX1

SERIES _____
 POSITIONS _____
 009
 015
 025
 037
 050
 GENDER _____
 1 = MALE
 2 = FEMALE
 TERMINATION _____
 9 = IDC
 SHELL PLATING _____
 3 = NICKEL
 HARDWARE OPTIONS _____
 00 = NO HARDWARE
 01 = .065 4-40 CLINCH NUT BOARD SIDE
 02 = .250 4-40 CLINCH NUT BOARD SIDE
 03 = .250 4-40 CLINCH NUT MATING SIDE
 PLATING OPTIONS _____
 1 = GOLD FLASH

SPECIFICATIONS:


MATERIALS:

SHELL: STEEL, NICKEL PLATED
 INSULATOR: UL 94V-0 RATED PBT
 230 DEGREE PROCESS TEMP.
 CONTACTS: PHOSPHOR BRONZE - GOLD PLATED
 RoHS COMPLIANT

ELECTRICALS:

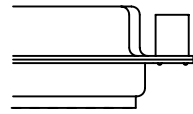
CURRENT RATING: 1 AMP
 CONTACT RESISTANCE: 15 mOHMS MAX
 INSULTOR RESISTANCE: 1000 MOHMS MIN
 VOLTAGE: 500V AC FOR 1 MINUTE
 TEMPERATURE: -50°C TO +100°C

ACCEPTS: 26 & 28 AWG STRANDED .050" CENTER FLAT RIBBON CABLE

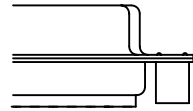
| | | | | |
|--|---|--------------------------------|--------------------------------|-------------------|
|  | THESE DRAWINGS AND SPECIFICATIONS ARE THE PROPERTY OF NorComp AND SHALL NOT BE REPRODUCED, COPIED OR USED AS THE BASIS FOR THE MANUFACTURE OF SALE OF APPARATUS WITHOUT WRITTEN PERMISSION. | | DRAWN: WAYNE ROBBINS | DATE: 11-15-05 |
| | | | CHECKED: | DATE: |
| NorComp | | SCALE: 1:1 | SHEET 1 OF 1 | REV 1 |
| | | DWG NO. 184-XXX-293LXX1 | | |

DESCRIPTION: CLINCH NUT HARDWARE

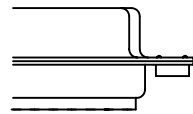
ALL CLINCH-NUTS ARE 4-40 INTERNAL THREADS



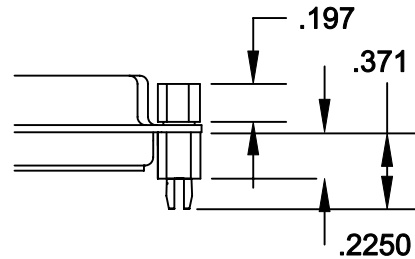
03X..... .250" (MATING SIDE) - CN8



02X250" (BOARD SIDE) - CN2



01X065" (BOARD SIDE) - CN1



91X225" (BOARD SIDE) - .197 MATING SIDE - CN10/SFS0440

NOTE: 4-40 FEMALE SCREW LOCK IS REMOVABLE



THESE DRAWINGS AND SPECIFICATIONS ARE THE PROPERTY OF NorComp AND SHALL NOT BE REPRODUCED, COPIED OR USED AS THE BASIS FOR THE MANUFACTURE OF SALE OF APPARATUS WITHOUT WRITTEN PERMISSION.

| | | | |
|-------------------------|-------------------|--------------------|-----------------|
| DRAWN: WAYNE ROBBINS | | DATE: 11-15-05 | |
| CHECKED: | | DATE: | |
| SCALE: | SHEET 1 | OF 1 | REV 1 |
| DWG NO. | | CLINCH-NUT OPTIONS | |

NorComp

Mouser Electronics

Authorized Distributor

Click to View Pricing, Inventory, Delivery & Lifecycle Information:

NorComp:

[184-009-293L011](#) [184-009-293L001](#) [184-009-293L021](#) [184-009-293L031](#) [184-015-293L001](#) [184-015-293L011](#)
[184-015-293L021](#) [184-015-293L031](#) [184-025-293L001](#) [184-025-293L011](#) [184-025-293L021](#) [184-025-293L031](#) [184-037-293L001](#) [184-037-293L011](#) [184-037-293L021](#) [184-037-293L031](#)