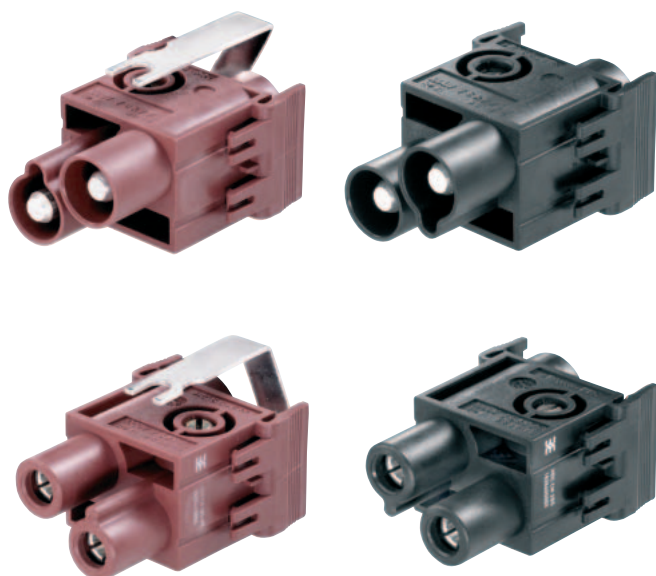


ConCept

The Weidmüller modular system has been expanded:

The high-current module – 82 A and 1000 V



The advantages at a glance:

- high rated current 82 A
- high rated voltage 1000 V
- suitable for at least 100 mating cycles
- simple, proven screw clamp termination
- clip-in hook ensures simple installation and removal of the module in the module frame
- no special tools required
- separate GND contact
- from 1 power contact + GND to 11 power contacts + GND in one HDC – unique in this class

The modules are designed as twin modules and can be installed in the ConCept module frame. Together with the appropriate Weidmüller HBD hoods and housings, they form a reliable plug-in connection for high performance in the IP 65 class.

Take advantage of the flexibility of ConCept, the modular system, and combine components as required: maximum power, optical fibre cables, Profibus-T distributor, etc.

United Kingdom

Weidmüller Ltd.
1 Abbey Wood Road, Kings Hill
West Malling, Kent ME19 4YT
Phone +44 1732-877032
Fax +44 1732-873873
Info@weidmuller.co.uk
<http://www.weidmueller.com>

USA

Weidmüller Inc.
821 Southlake Boulevard
Richmond, Virginia 23236
Phone +1 804-7942877
Fax +1 804-3792593
info@weidmuller.com
<http://www.weidmuller.com>

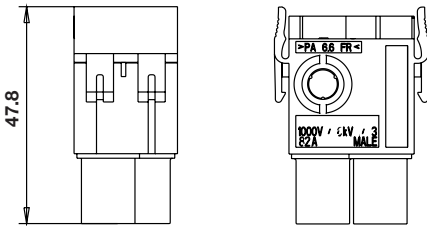
Other countries

Weidmüller Interface GmbH & Co. KG
Postfach 3030
32720 Detmold
Phone +49 5231-14-0
Fax +49 5231-14-2083
info@weidmueller.com
<http://www.weidmueller.com>

ConCept – High-current modules

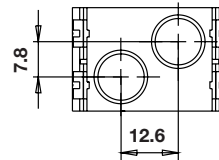
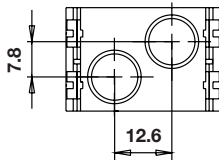
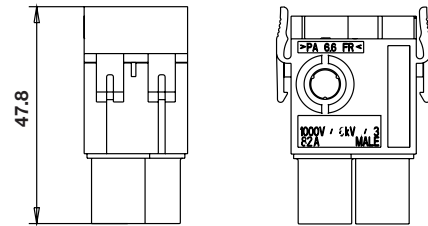
Screw connection CM-1 SS + PE

1-pole + GND 1000 V/82 A



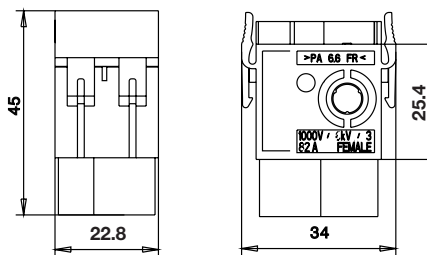
Screw connection CM-2 SS

2-pole 1000 V/82 A



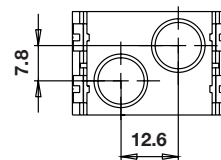
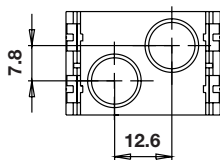
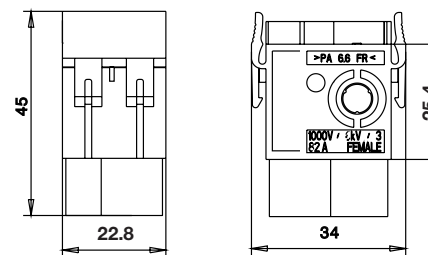
Screw connection CM-1 BS + PE

1-pole + GND 1000 V/82 A



Screw connection CM-2 BS

2-pole 1000 V/82 A



Colour	Version	Type	Qty.	Grey	Cat. No.
Male	HDC-CM	1SS+PE	5	1828390000	
Female	HDC-CM	1BS+PE	5	1828410000	

Colour	Version	Type	Qty.	Grey	Cat. No.
Male	HDC-CM	2SS	5	1828380000	
Female	HDC-CM	2BS	5	1828400000	

Technical data

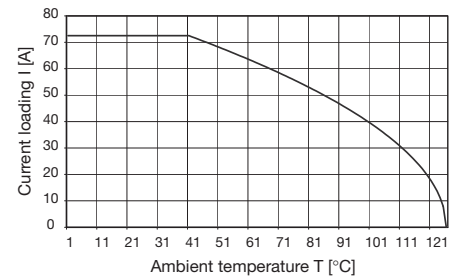
System specifications	1000 V/82 A	1000 V/82 A
Pole number	1/1 GND	2
Description	CM 1 + PE	CM-2
Contact diameter	mm 6	6
Connection method	screw	screw
Contact	turned	turned
Conductor cross-section		
	mm ² 4.0...16.0	4.0...16.0
AWG conductor	12...6	12...6

Electrical specification		
plastic PC		
Colour: grey		
Rated voltage max.	V 1000	1000
Rated current max.	A 82	82
Impulse voltage	KV 6	6
Pollution severity	3	3
Insulation resistance	Ω > 10 ¹²	10 ¹²
Overvoltage category	III	III
Through resistance	mΩ < 5	< 5

Materials data		
• Modules		
Flammability class UL 94		V-0
Plastic material		
- with PE		PA (copper red)
- with 2 power contacts		PA (black; RAL 9005)
• Frames		
Flammability class UL 94		V-0
Plastic material		PC (grey, RAL 7032)
		PA (black, RAL 9005)
• Contacts		
Basic material		Cu-alloy
Plating		Ag Ag

Derating curve

Module CM-2 und CM-1 + PE

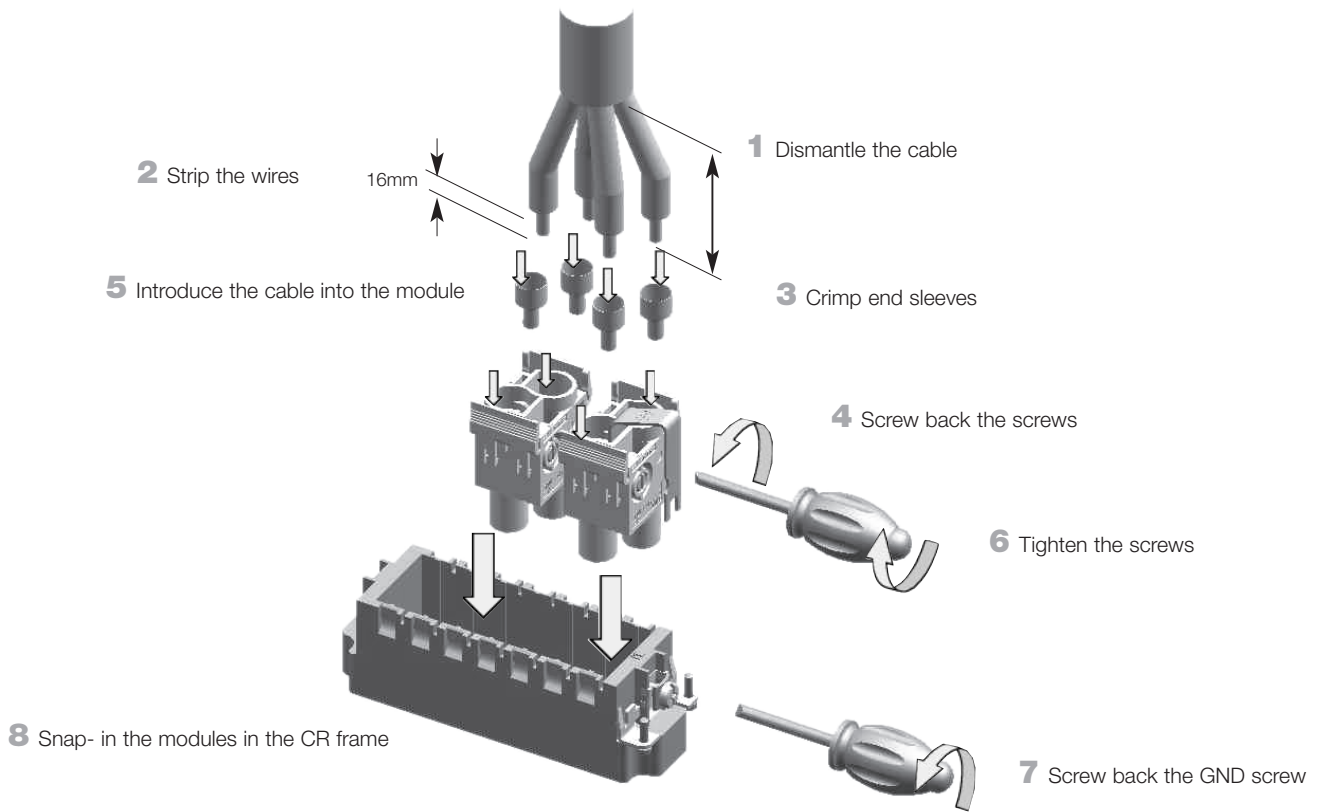


ConCept module CM-2 (2 power contacts) and CM-1 (1 power contact + GND)
Conductor 16 mm²

We recommend our crimping tool PZ16
Order No. 901260000

ConCept – High-current modules

Mounting System HDC CM



Attention: In every CR frame there must be used a GND module!

Use the modules in hoods HBD 40, 64 or HB 32, 48.

