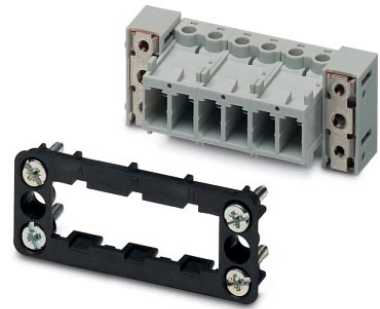



VC-AR4/5M-S22222-SET

Order No.: 1607335

The illustration shows a 6-position version

<http://eshop.phoenixcontact.de/phoenix/treeViewClick.do?UID=1607335>

Contact insert set for mounting side, sleeve frame with PE, 4 fixing screws, 2-pos. contact inserts preassembled, 6 coding profiles, 2 mounting flanges

| Commercial data | |
|--------------------------|--|
| GTIN (EAN) |  4 017918 941062 |
| sales group | D294 |
| Pack | 5 pcs. |
| Customs tariff | 85366990 |
| Catalog page information | Page 454 (PC-2011) |

Product notesWEEE/RoHS-compliant since:
03/02/2006

<http://www.download.phoenixcontact.com>
Please note that the data given here has been taken from the online catalog. For comprehensive information and data, please refer to the user documentation. The General Terms and Conditions of Use apply to Internet downloads.

| Technical data | |
|---------------------------------|-------------------|
| General data | |
| Connection method | Screw connection |
| | Screw connection |
| Tightening torque | 0.5 Nm ... 0.6 Nm |
| Ambient temperature (operation) | -40 °C ... 100 °C |

| | |
|---|---|
| Pollution degree | 3 |
| Surge voltage category | III |
| Number of positions | 10 |
| Insertion/withdrawal cycles | ≥ 100 |
| Design | VC4 |
| Conductor cross section solid min. | 0.2 mm ² |
| Conductor cross section solid max. | 2.5 mm ² |
| Conductor cross section stranded min. | 0.2 mm ² |
| Conductor cross section stranded max. | 1.5 mm ² |
| Conductor cross-section | 0.2 mm ² ... 4 mm ² |
| Connection cross-section AWG | 30 ... 10 |
| Stripping length of the individual wire | 7 mm |

Material data

| | |
|------------------------------------|------------|
| Inflammability class acc. to UL 94 | V0 |
| Contact material | CuZn |
| Contact surface material | Tin-plated |
| Contact carrier material | PA |

Electrical characteristics

| | |
|--------------------------------|-------|
| Rated voltage (III/3) | 400 V |
| Nominal voltage U _N | 400 V |
| Rated surge voltage | 6 kV |
| | 6 kV |
| Rated current | 20 A |

Address

PHOENIX CONTACT Deutschland GmbH
Flachmarktstr. 8
32825 Blomberg, Germany
Phone +49 5235 3 12000
Fax +49 5235 3 41200
<http://www.phoenixcontact.de>



© 2011 Phoenix Contact
Technical modifications reserved;