

Inserts Group Size 6

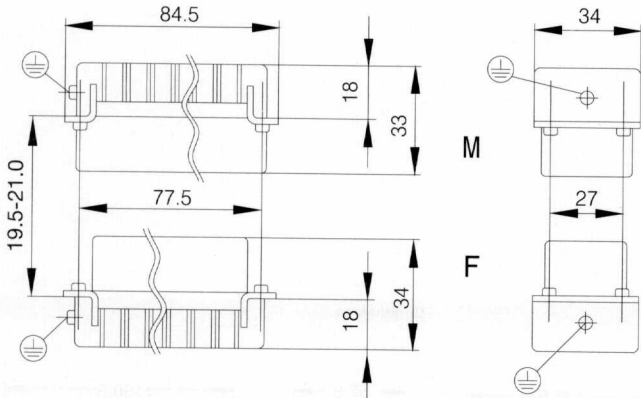
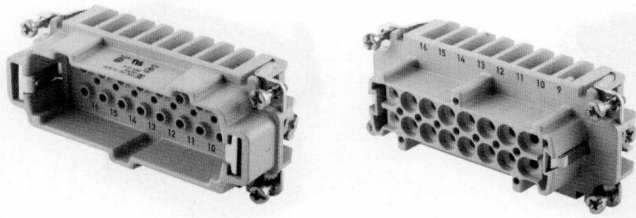
NEW 500 V

Crimp connection HE-16

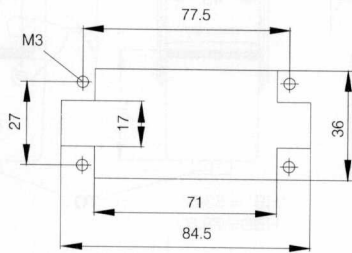
Turned crimp contacts

16-pole

500 V-/max 16 A

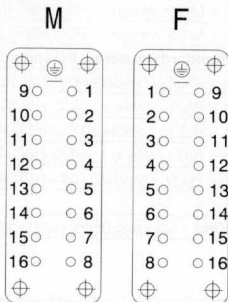


Cut-out for contact inserts used without housings



Contact layout

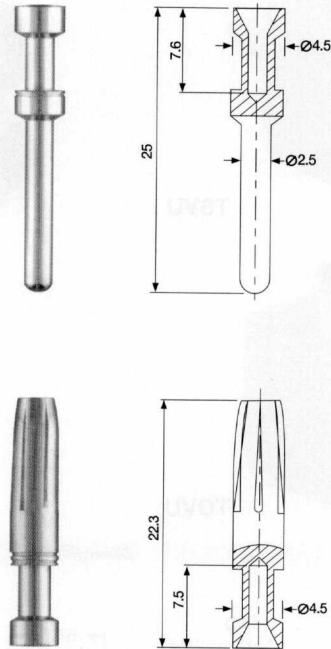
view from cable side



Male insert (M)

Female insert (F)

Male	HDC-HE-16SCM	1207900000	5
Female	HDC-HE-16BCM	1208000000	5



Turned crimp contacts for HE housing inserts and HE modules

Male crimps

Cross-section mm ²	AWG	Plating	Type	Cat. No.	Qty.
0.5	20	Au	HDC-C-HE-SM0.5Au	1651420000	100
	20	Ag	HDC-C-HE-SM0.5Ag	1200500000	100
0.75 - 1.00	18	Au	HDC-C-HE-SM0.75-1.00Au	1651430000	100
	18	Ag	HDC-C-HE-SM0.75-1.00Ag	1200600000	100
1.5	16	Au	HDC-C-HE-SM1.5Au	1651440000	100
	16	Ag	HDC-C-HE-SM1.5Ag	1200700000	100
2.5	14	Au	HDC-C-HE-SM2.5Au	1651450000	100
	14	Ag	HDC-C-HE-SM2.5Ag	1200800000	100
4.0	12	Au	HDC-C-HE-SM4.0Au	1651460000	100
	12	Ag	HDC-C-HE-SM4.0Ag	1200900000	100

Female crimps

Cross-section mm ²	AWG	Plating	Type	Cat. No.	Qty.
0.5	20	Au	HDC-C-HE-BM0.5Au	1651470000	100
	20	Ag	HDC-C-HE-BM0.5Ag	1201100000	100
0.75 - 1.00	18	Au	HDC-C-HE-BM0.75-1.00Au	1651480000	100
	18	Ag	HDC-C-HE-BM0.75-1.00Ag	1201200000	100
1.5	16	Au	HDC-C-HE-BM1.5Au	1651490000	100
	16	Ag	HDC-C-HE-BM1.5Ag	1201300000	100
2.5	14	Au	HDC-C-HE-BM2.5Au	1651500000	100
	14	Ag	HDC-C-HE-BM2.5Ag	1201400000	100
4.0	12	Au	HDC-C-HE-BM4.0Au	1651510000	100
	12	Ag	HDC-C-HE-BM4.0Ag	1201500000	100

For crimp contacts see page 35

For accessories see section "Accessories"

Series HE