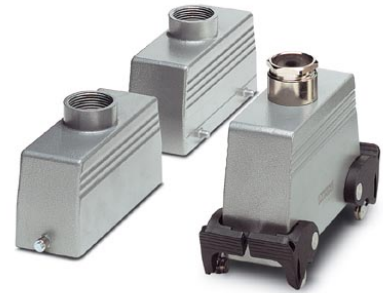


HC-B 24-TMQ-76/O1PG21S


Order No.: 1674422

The illustration shows a sleeve housing in the versions for double locking latch and single locking latch and with double locking latch, with straight cable exit



<http://eshop.phoenixcontact.de/phoenix/treeViewClick.do?UID=1674422>

Sleeve housing, with double locking latch, height: 76 mm, with supports, 1 x Pg21, lateral cable outlet

Commercial data	
GTIN (EAN)	 4 017918 149468
Note	Made-to-order
sales group	D002
Pack	10 pcs.
Customs tariff	85389099

Product notes

WEEE/RoHS-compliant since:
01/18/2006



<http://www.download.phoenixcontact.com>
Please note that the data given here has been taken from the online catalog. For comprehensive information and data, please refer to the user documentation. The General Terms and Conditions of Use apply to Internet downloads.

Technical data

General data	
Note	For contact inserts HC-B24, BB46, D64, DD108, M
Design	B24
Height	76 mm
Width	43 mm
Length	120 mm
Housing type	Sleeve housings

Locking type	With double locking latch
Cable exit	Lateral
Pg screw connection	None
Type of the screw connection	1x Pg21
Degree of protection	IP65
Ambient temperature (operation)	-40 °C ... 125 °C
Housing material	Aluminum, die-cast
Housing surface material	Powder-coated, gray
Material lock	High-grade steel, handle: PA-GF
Material grip body interlock	PA-GF

Certificates / Approvals

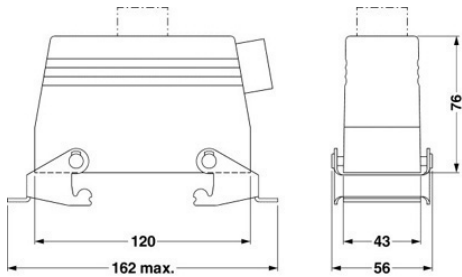


Certification

GOST

Diagrams/Drawings

Dimensioned drawing



Address

PHOENIX CONTACT Inc., USA
586 Fulling Mill Road
Middletown, PA 17057, USA
Phone (800) 888-7388
Fax (717) 944-1625
<http://www.phoenixcon.com>



© 2011 Phoenix Contact
Technical modifications reserved;