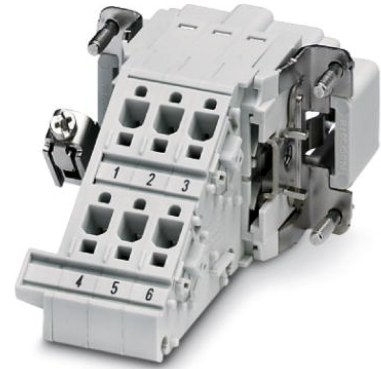


## HC-B 6-A-DT-PER-M

Order No.: 1648380



<http://eshop.phoenixcontact.de/phoenix/treeViewClick.do?UID=1648380>

HEAVYCON terminal adapter male insert, B6 series, 6-pos., left PE connection for the right side of the control cabinet, push-in connection

### Commercial data

EAN	4046356092104
Pack	10 pcs.
Customs tariff	85366990
Weight/Piece	0.07334 KG
Catalog page information	Page 468 (PC-2009)

### Product notes

WEEE/RoHS-compliant since:  
09/05/2005



<http://www.download.phoenixcontact.com>  
Please note that the data given here has been taken from the online catalog. For comprehensive information and data, please refer to the user documentation. The General Terms and Conditions of Use apply to Internet downloads.

### Accessories

Item	Designation	Description
------	-------------	-------------

### Assembly

1775240	HC-KA-FE	Foot element, for mounting on DIN rail NS 32, DIN rail NS 35/7.5 or DIN rail NS 35/15, can be inserted between basic and side element
1660083	HC-VSH	Locking screw barrel, for a firm connection of contact inserts and DIN-rail mountable terminal adapters

**General**

1644326	HC-B-3PE	PE multiplier, for three PE connections, for HC-B (besides HC-B..E..ZZ) / HC-BB / HC-DD / HC-D40 / HC-D64 contact inserts
1604997	HC-B-PES	PE screw, for contact inserts HC-B / HC-BB / HC-DD / HC-D40 / HC-D64
1772722	HC-CB	Coding pin, prevents mismatching of up to six plug connectors with an identical number of positions
1676860	HC-CBU	Keying socket for coding up to 16 plug connectors
1676857	HC-CST	Keying peg for coding up to 16 plug connectors
0810779	ZBF-U:SO/CMS	Zack marker strips off the roll, flat, printed according to customer requirements

**Plug/Adapter**

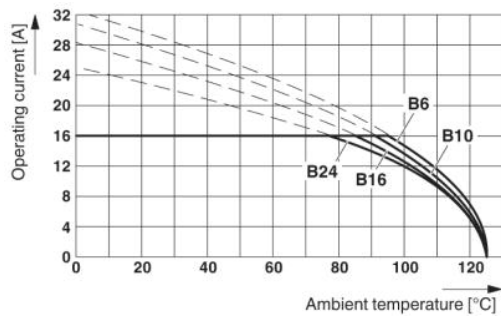
1686478	CP-HC	Keying profile, 4-section, for pushing into the keying grooves
---------	-------	--

**Tools**

1204504	SZF 0-0,4X2,5	Screwdriver, blade: 0.4 x 2.5 x 100 mm, length 180 mm
---------	---------------	---

**Drawings**

Diagram



**Address**

PHOENIX CONTACT GmbH & Co. KG  
Flachsmarktstr. 8  
32825 Blomberg, Germany  
Phone +49 5235 3 00  
Fax +49 5235 3 41200  
<http://www.phoenixcontact.com>



© 2009 Phoenix Contact  
Technical modifications reserved;