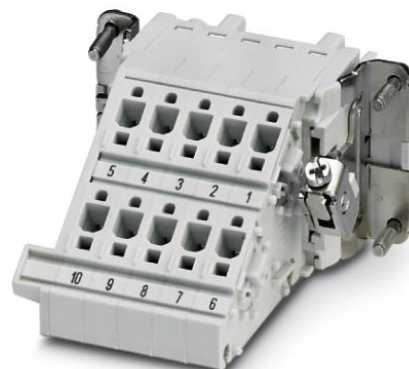


HC-B 10-A-DT-PEL-F

Order No.: 1648393



<http://eshop.phoenixcontact.de/phoenix/treeViewClick.do?UID=1648393>

HEAVYCON terminal adapter female insert, B10 series, 10-pos., right PE connection for the left side of the control cabinet, push-in connection

Commercial data	
EAN	4046356092111
Pack	10 pcs.
Customs tariff	85366990
Weight/Piece	0.09811 KG
Catalog page information	Page 469 (PC-2009)

Product notes

WEEE/RoHS-compliant since:
09/05/2005



<http://www.download.phoenixcontact.com>
Please note that the data given here has been taken from the online catalog. For comprehensive information and data, please refer to the user documentation. The General Terms and Conditions of Use apply to Internet downloads.

Accessories

Item	Designation	Description
Assembly		
1775240	HC-KA-FE	Foot element, for mounting on DIN rail NS 32, DIN rail NS 35/7.5 or DIN rail NS 35/15, can be inserted between basic and side element

1660083	HC-VSH	Locking screw barrel, for a firm connection of contact inserts and DIN-rail mountable terminal adapters
---------	--------	---

General

1644326	HC-B-3PE	PE multiplier, for three PE connections, for HC-B (besides HC-B..E..ZZ) / HC-BB / HC-DD / HC-D40 / HC-D64 contact inserts
1604997	HC-B-PES	PE screw, for contact inserts HC-B / HC-BB / HC-DD / HC-D40 / HC-D64
1772722	HC-CB	Coding pin, prevents mismatching of up to six plug connectors with an identical number of positions
1676860	HC-CBU	Keying socket for coding up to 16 plug connectors
1676857	HC-CST	Keying peg for coding up to 16 plug connectors
0810779	ZBF-U:SO/CMS	Zack marker strips off the roll, flat, printed according to customer requirements

Plug/Adapter

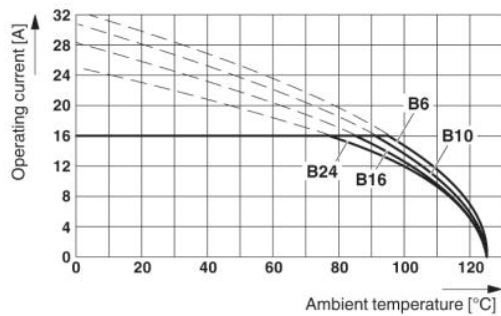
1686478	CP-HC	Keying profile, 4-section, for pushing into the keying grooves
---------	-------	--

Tools

1204504	SZF 0-0,4X2,5	Screwdriver, blade: 0.4 x 2.5 x 100 mm, length 180 mm
---------	---------------	---

Drawings

Diagram



Address

PHOENIX CONTACT GmbH & Co. KG
Flachsmarktstr. 8
32825 Blomberg, Germany
Phone +49 5235 3 00
Fax +49 5235 3 41200
<http://www.phoenixcontact.com>



© 2009 Phoenix Contact
Technical modifications reserved;