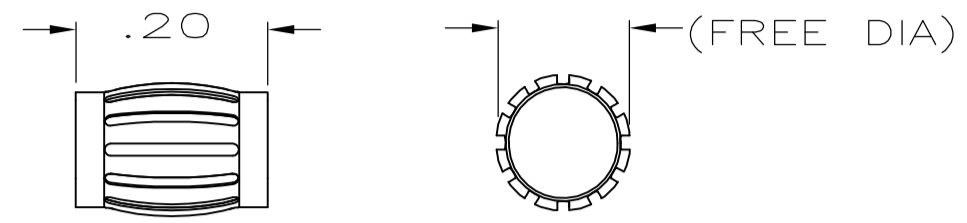


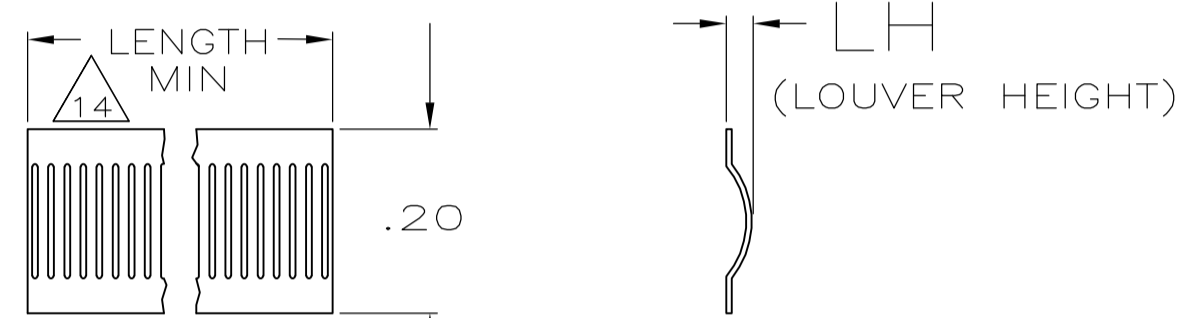
THIS DRAWING IS UNPUBLISHED. RELEASED FOR PUBLICATION
 © COPYRIGHT - By - ALL RIGHTS RESERVED.

LOC	DIST	REVISIONS					
FT	0	P	LTR	DESCRIPTION	DATE	DWN	APVD
		L		REVISED PER ECO-15-012365	17NOV2015	NK	MZ

(FREE DIA)	LH	STYLE	MATING DIA	NUM LOUV	MAT'L (NOTE NO)	PLATING	MAT'L THK	REF	PART NUMBER	
[.09]	[.016]	B	[.080]	6	12	1-2	0.12[.005]	--	5-192045-4	OBSOLETE
[.09]	[.016]	B	[.080]	6	12	UNPL	0.12[.005]	--	5-392045-3	17
[5.98]	[.020]	B	[6.040]	667	12	1-2	0.12[.005]	05091	5-192045-2	OBSOLETE
[5.98]	[.020]	B	[5.980]	667	12	UNPL	0.12[.005]	05085	5-192045-1	OBSOLETE
[5.00]	[.020]	B	[5.040]	557	12	1-2	0.12[.005]	05092	5-192045-0	OBSOLETE
[5.00]	[.020]	B	[4.980]	557	12	UNPL	0.12[.005]	05084	4-192045-9	OBSOLETE
[4.84]	[.020]	B	[4.880]	539	12	1-2	0.12[.005]	05093	4-192045-8	OBSOLETE
[4.68]	[.020]	B	[4.660]	521	12	UNPL	0.12[.005]	05083	4-192045-7	OBSOLETE
[3.38]	[.020]	B	[3.410]	375	12	1-2	0.12[.005]	05089	4-192045-6	OBSOLETE
[3.22]	[.020]	B	[3.000]	335	12	1-2	0.12[.005]	--	4-192045-5	OBSOLETE 17
[3.22]	[.016]	B	[3.000]	335	12	1-2	0.12[.005]	05086	4-192045-4	OBSOLETE
[2.76]	[.016]	B	[2.750]	305	12	1-2	0.12[.005]	05073	4-192045-3	OBSOLETE
[2.07]	[.020]	B	[2.100]	228	12	3-2	0.12[.005]	05090	4-192045-2	OBSOLETE
[1.51]	[.020]	B	[1.500]	166	12	3-2	0.15[.006]	--	4-192045-1	OBSOLETE
		B	[1.375]	153	13	1-2	0.12[.005]	05087	4-192045-0	OBSOLETE
[1.13]	[.018]	B	[1.120]	122	12	UNPL	0.12[.005]	05177	3-192045-9	OBSOLETE
[.97]	[.020]	B	[.950]	105	12	1-2	0.12[.005]	05094	3-192045-8	OBSOLETE
[.97]	[.020]	B	[.950]	105	12	UNPL	0.12[.005]	05101	3-192045-7	OBSOLETE
[.95]	[.016]	B	[.938]	102	12	1-2	0.12[.005]	05074	3-192045-6	OBSOLETE
[.70]	[.016]	B	[.688]	74	12	1-2	0.12[.005]	05072	3-192045-5	OBSOLETE
[.66]	[.020]	B	[.625]	70	12	3-2	0.15[.006]	05024	3-192045-4	OBSOLETE
[.67]	[.018]	B	[.598]	71	13	3-2	0.12[.005]	05178	3-192045-3	OBSOLETE
[.48]	[.020]	B	[.504]	54	12	3-2	0.15[.006]	05123	3-192045-2	OBSOLETE
[.48]	[.020]	B	[.504]	54	12	1-2	0.15[.006]	05021	3-192045-1	17
[.48]	[.020]		[.504]	54	12	UNPL	0.15[.006]	--	3-192045-0	17
								05171	2-192045-9	OBSOLETE
								05170	2-192045-8	OBSOLETE
[.47]	[.016]	B	[.433]	49	12	3-2	0.15[.006]	05140	2-192045-7	OBSOLETE
[.43]	[.020]	B	[.399]	44	12	3-2	0.12[.005]	05020	2-192045-6	17
[.39]	[.016]	B	[.375]	39	12	1-2	0.12[.005]	05076	2-192045-5	OBSOLETE
[.32]	[.020]	B	[.312]	32	12	UNPL	0.12[.005]	05100	2-192045-4	OBSOLETE 17
[.27]	[.020]	B	[.250]	26	12	3-2	0.15[.006]	05017	2-192045-3	OBSOLETE
[.26]	[.016]		[.250]	26		1-2	0.12[.005]	05071	2-192045-2	OBSOLETE 17
								05186	2-192045-1	OBSOLETE
[.18]	[.020]	B	[.164]	16	12	3-2	0.15[.006]	05014	2-192045-0	OBSOLETE 17
[.18]	[.020]	B	[.164]	16	12	UNPL	0.15[.006]	05028	1-192045-9	
[.17]	[.016]		[.156]	14	12	1-2	0.12[.005]	05075	1-192045-8	OBSOLETE 17
								05027	1-192045-7	OBSOLETE
[.15]	[.020]	B	[.140]	12	12	6-7	0.10[.004]	05187	1-192045-6	OBSOLETE
[.15]	[.020]	B	[.140]	12	12	3-2	0.10[.004]	05166	1-192045-5	OBSOLETE
[.15]	[.020]	B	[.140]	12	12	UNPL	0.10[.004]	05165	1-192045-4	17
[.14]	[.020]	B	[.125]	11	12	1-2	0.12[.005]	05096	1-192045-3	OBSOLETE
	[.022]	C	--	15	12	5-2	0.10[.004]	05119	1-192045-2	OBSOLETE
	[.022]	C	--	14	12	3-2	0.15[.006]	05002	1-192045-1	OBSOLETE
	[.022]	C	--	14	12	UNPL	0.15[.006]	05048	1-192045-0	OBSOLETE
	[.018]	C	--	14	12	UNPL	0.15[.006]	--	192045-9	OBSOLETE
	[.029]	C	--	14	12	1-2	0.12[.005]	--	192045-8	17
	[.029]	C	--	14	12	UNPL	0.12[.005]	05185	192045-7	OBSOLETE
	[.022]	C	--	14	12	3-2	0.12[.005]	--	192045-6	OBSOLETE
	[.022]	C	--	14	12	1-2	0.12[.005]	05097	192045-5	OBSOLETE
	[.022]	C	--	14	12	UNPL	0.12[.005]	05055	192045-4	OBSOLETE
	[.018]	C	--	14	12	UNPL	0.12[.005]	--	192045-3	17
	[.027]	C	--	14	12	3-2	0.10[.004]	05164	192045-2	OBSOLETE
	[.027]	C	--	14	12	UNPL	0.10[.004]	05167	192045-1	OBSOLETE



STYLE B
(MALE)



STYLE C
(STRIP)

- 1 FINISH-SILVER PLATE 200uIN THICK MIN.
- 2 FINISH-NICKEL PLATE 40uIN THICK MIN.
- 3 FINISH-GOLD PLATE 10uIN THICK MIN.
- 4 FINISH-GOLD PLATE 50uIN THICK MIN.
- 5 FINISH-GOLD PLATE 20uIN THICK MIN.
- 6 FINISH-GOLD PLATE 200uIN THICK MIN.
- 7 FINISH-COPPER PLATE 10uIN THICK MIN.
- 8
- 9
- 10
- 11 PLATING NOTES ARE TO BE INTERPRETED AS FOLLOWS, 6-8 AS 6 OVER 8.
- 12 MATERIAL-CDA172, BeCu.
- 13 MATERIAL-STAINLESS STEEL.

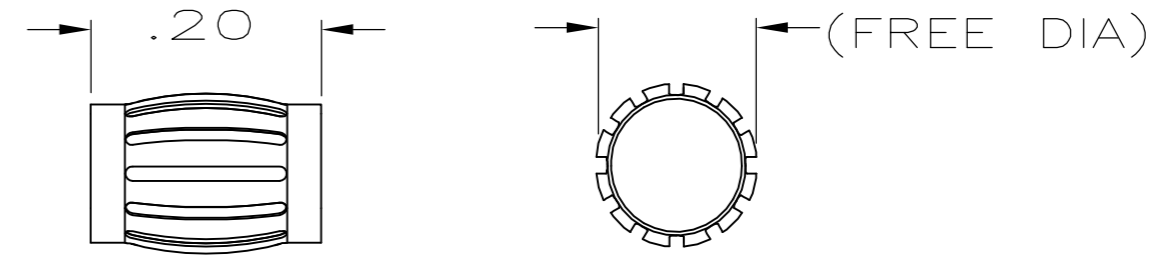
- 14 PRODUCT IS SOLD BY THE FOOT.
- 15 72 INCH STRIP WOUND TO ONE INCH INSIDE DIAMETER.
- 16 PRELIMINARY PART NO.
- 17 OBSOLETE PARTS: OBSOLETE CIS STREAMLINING PER D.RENAUD/D.SINISI

THIS DRAWING IS A CONTROLLED DOCUMENT.		DWN	-	
DIMENSIONS: INCHES		CHK	J.TURNER	08-04-93
TOLERANCES UNLESS OTHERWISE SPECIFIED:		APVD	-	
0 PLC ± -		NAME		
1 PLC ± -		CONTACT BAND, LAV MALE		
2 PLC ± .02		-		
3 PLC ± .010		APPLICATION SPEC		
4 PLC ± -		-		
ANGLES ± -		SIZE	CAGE CODE	DRAWING NO
FINISH		WEIGHT	A2	00779
SEE TABLE		C=192045		RESTRICTED TO
-		CUSTOMER DRAWING		-
-		SCALE	1:1	SHEET 1 of 2
-		REV		L

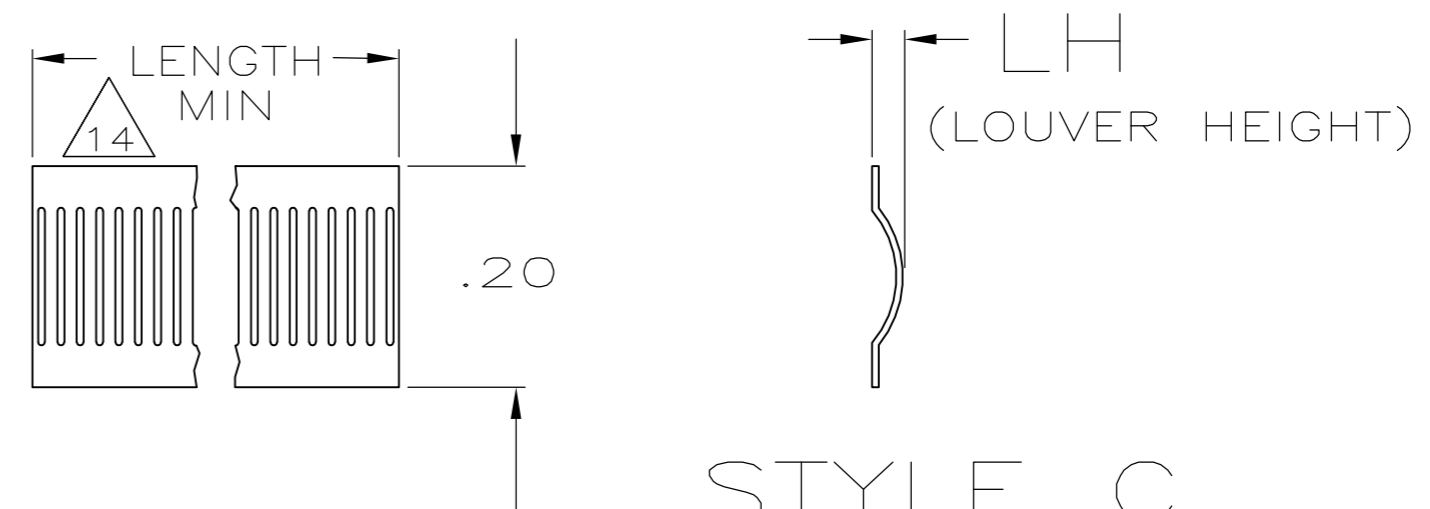
THIS DRAWING IS UNPUBLISHED. RELEASED FOR PUBLICATION
 © COPYRIGHT - By - ALL RIGHTS RESERVED.

LOC	DIST	REVISIONS					
FT	0	P	LTR	DESCRIPTION	DATE	DWN	APVD
		-	-	SEE SHEET 1	-	-	-

(FREE DIA)	LH	STYLE	(MATING DIA)	NUM LOUV	MAT'L (NOTE NO)	PLATING	MAT'L THK	REF	PART NUMBER
--	[.020]	C	--	--	13	UNPL	0.12 [.005]	--	7-192045-4
[4.84]	[.020]	B	--	539	12	UNPL	0.12 [.005]	--	7-192045-3
[3.38]	[.020]	B	--	375	12	UNPL	0.12 [.005]	--	7-192045-2
[3.22]	[.020]	B	--	335	12	UNPL	0.12 [.005]	--	7-192045-1
[3.22]	[.016]	B	--	335	12	UNPL	0.12 [.005]	--	7-192045-0
[2.76]	[.016]	B	--	305	12	UNPL	0.12 [.005]	--	6-192045-9
[2.07]	[.020]	B	--	228	12	UNPL	0.12 [.005]	--	6-192045-8
[1.51]	[.020]	B	--	166	12	UNPL	0.15 [.006]	--	6-192045-7
[1.40]	[.016]	B	--	153	12	UNPL	0.12 [.005]	--	6-192045-6
[.95]	[.016]	B	--	102	12	UNPL	0.12 [.005]	--	6-192045-5
[.70]	[.016]	B	--	74	12	UNPL	0.12 [.005]	--	6-192045-4
[.66]	[.020]	B	--	70	12	UNPL	0.15 [.006]	--	6-192045-3
[.47]	[.016]	B	--	49	12	UNPL	0.15 [.006]	--	6-192045-2
[.43]	[.020]	B	--	44	12	UNPL	0.12 [.005]	--	6-192045-1
[.39]	[.016]	B	--	39	12	UNPL	0.12 [.005]	--	6-192045-0
[.27]	[.020]	B	--	24	12	UNPL	0.15 [.006]	--	5-192045-9
[.26]	[.016]	B	--	24	12	UNPL	0.12 [.005]	--	5-192045-8
[.17]	[.016]	B	--	15	12	UNPL	0.12 [.005]	--	5-192045-7
[.14]	[.020]	B	--	11	12	UNPL	0.12 [.005]	--	5-192045-6
--	[.022]	C	--	12	UNPL	0.10 [.004]	--	5-192045-5	



STYLE B
(MALE)



STYLE C
(STRIP)

16

192045

THIS DRAWING IS A CONTROLLED DOCUMENT.		DWN	-	STE TE Connectivity	
DIMENSIONS: INCHES		CHK	J.TURNER 08-04-93		
TOLERANCES UNLESS OTHERWISE SPECIFIED:		APVD	-	NAME	
0 PLC ± -		PRODUCT SPEC	-	CONTACT BAND, LAV MALE	
1 PLC ± -		APPLICATION SPEC	-	SIZE	CAGE CODE
2 PLC ± .02		WEIGHT	-	A2	00779
3 PLC ± .010		CUSTOMER DRAWING	-	DRAWING NO	C=192045
4 PLC ± -		SCALE	1:1	SHEET	2 of 2
ANGLES ± -		FINISH	SEE TABLE	REV	L
MATERIAL SEE TABLE					

Mouser Electronics

Authorized Distributor

Click to View Pricing, Inventory, Delivery & Lifecycle Information:

[TE Connectivity:](#)

[1-192045-9](#)