

4

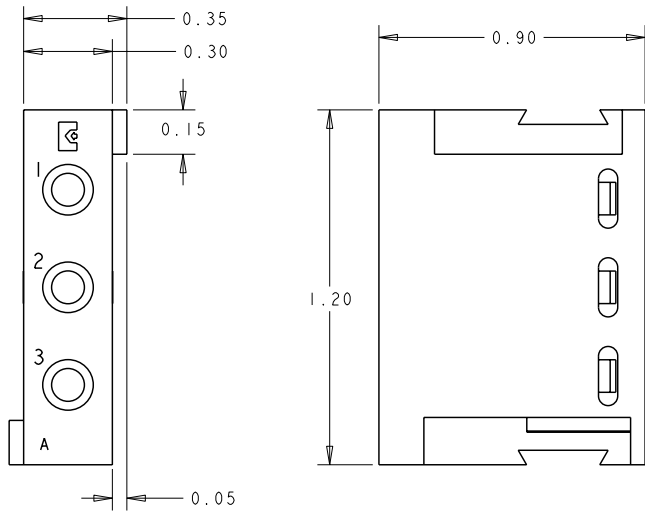
3

2

1

THIS DRAWING IS UNPUBLISHED. RELEASED FOR PUBLICATION 20
 COPYRIGHT 20 BY TYCO ELECTRONICS CORPORATION. ALL RIGHTS RESERVED.

LOC		DIST		REVISIONS				
P	LTR	DESCRIPTION			DATE	DWN	APVD	
	A	NEW RELEASE			25SEP2008	CR	PD	



1. PART NUMBER CHANGES AND OR DESIGN CHANGES AFFECTING ITEM INTERCHANGEABILITY REQUIRE PRIOR TYCO ELECTRONICS APPROVAL AND AUTHORIZATION BY REVISION TO THIS DRAWING.

ITEMS PROVIDED TO THIS SPECIFICATION TO BE PERMANENTLY IDENTIFIED PER THE FOLLOWING IDENTIFIER LABEL

2. TYCO ELECTRONICS P/N YEAR WEEK
 DATE CODE (e.g. 0706)
 XXXXXX-X XXXX

AS SHOWN	1648466-1
DESCRIPTION	PART NO.

<small>THIS DRAWING IS A CONTROLLED DOCUMENT FOR TYCO ELECTRONICS CORPORATION AND IS SUBJECT TO CHANGE. THE CONTROLLING ENGINEERING ORGANIZATION SHOULD BE CONTACTED FOR THE LATEST REVISION.</small>		DWN 25SEP2008 C. ROHLER CHK 25SEP2008 D. ORRIS APVD 25SEP2008 M. PERCHERKE	Tyco Electronics Harrisburg, PA 17105-3608
DIMENSIONS: INCHES 	TOLERANCES UNLESS OTHERWISE SPECIFIED: 0 PLC ±. 1 PLC ±.02 2 PLC ±.01 3 PLC ±. 4 PLC ±. ANGLES ±.	NAME A MODULE SOCKET ASSY HOUSING SNAP-IN STYLE	RESTRICTED TO -
MATERIAL -	FINISH -	WEIGHT - SIZE A3 CAGE CODE 00779 DRAWING NO. C-1648466	CUSTOMER DRAWING SCALE 3:1 SHEET 1 OF 1 REV A

ELCON **DOMINO**

AMP 1470-19 REV 31MAR2000
 Pro/ENGINEER DRAWING