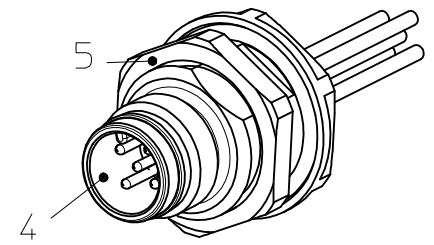
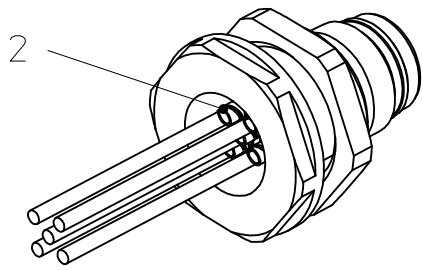
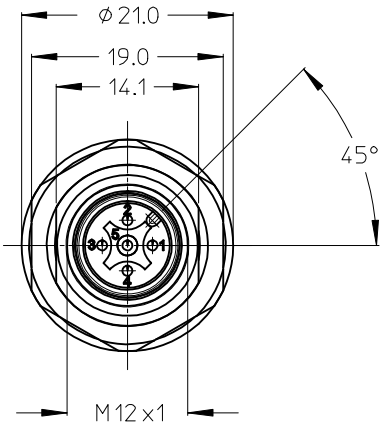
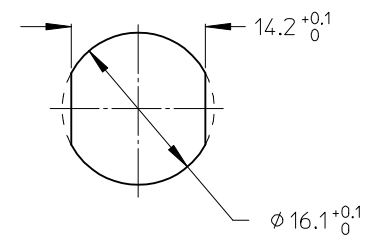


Panel Cutout



ITEM	COMPONENT	MATERIAL	FINISH
1	O-RING 16x1.5	EPDM	BLACK
2	PIN CONTACT	BRASS	CuZn Ni/Au
3	REC. SHELL MALE	BRASS	Ni PLATED
4	Insert	PA	BLACK
5	LOCKNUT	BRASS	Ni PLATED
6	POTTING MATERIAL	EPOXY	NONE

ENTER DESCRIPTION
 EC NO: IPG2013-0601
 DRWN:PMERUNKA 2012/09/27
 CHKD:RSCHIEBER 2012/12/10
 APPR:CBURGER 2012/12/13

QUALITY SYMBOLS
 ▽=0
 ◻=0

GENERAL TOLERANCES (UNLESS SPECIFIED)

	mm	INCH
4 PLACES	± ---	± ---
3 PLACES	± ---	± ---
2 PLACES	± 0.05	± ---
1 PLACE	± 0.10	± ---
0 PLACE	± ---	± ---

ANGULAR ± 1.0°
 DRAFT WHERE APPLICABLE MUST REMAIN WITHIN DIMENSIONS

DIMENSION STYLE
MM ONLY

DRAWN BY: PMERUNKA
 DATE: 2012/06/25

CHECKED BY: RSCHIEBER
 DATE: 2012/12/10

APPROVED BY: CBURGER
 DATE: 2012/09/19

MATERIAL NO.
SEE TABLE

SIZE
A3

SCALE
2:1

DESIGN UNITS
METRIC

THIRD ANGLE PROJECTION



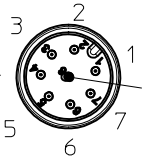
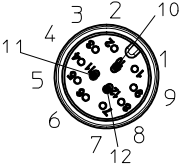
TITLE
**REC U12 XP AC MA M16 BM
 WIR SHD BRA AU**

molex

DOCUMENT NO.
SD-120084-049

SHEET NO.
1 OF 2

THIS DRAWING CONTAINS INFORMATION THAT IS PROPRIETARY TO MOLEX INCORPORATED AND SHOULD NOT BE USED WITHOUT WRITTEN PERMISSION

MATERIAL -NO. ENG-NO.	1200845183 WR4W46E03C3003	1200845185 WR5W46E03C3003	1200845187 WR8W46E02C300	1200845188 WRCW46E01C300
LAYOUT	4 POL 	5 POL 	8 POL 	12 POL 
VOLTAGE RATING	250V AC/DC	60V AC/DC	30V AC/36V DC	30V AC/DC
AMPERE RATING	4A	4A	2A	1.5A
PROTECTION CLASS	CONNECTOR INTERFACE		IP 67 (in mated condition)	
	SHELL TO ENCLOSURE		IP 67 (when properly installed)	
OPERATING TEMP.	-25°C / 90°C			
UL CERTIFICATION	FILE NO. E152210			
CSA CERTIFICATION	FILE NO. LR6837			
WIRE LEAD	0.34mm ² PVC	0.34mm ² PVC	0.25mm ² PVC	0.14mm ² PVC
PIN DIAMETER	1mm	1mm	0.6mm	0.6mm
WIRE COLOR	ACCORDING TO IEC 60947-5-2		ACCORDING TO DIN 47100	

DIN 47100	
PIN #	COLOR
1	WHITE
2	BROWN
3	GREEN
4	YELLOW
5	GREY
6	PINK
7	BLUE
8	RED
9	BLACK
10	PURPLE
11	GREY-PINK
12	RED-BLUE

IEC 60947-5-2	
PIN#	COLOR
1	BROWN
2	WHITE
3	BLUE
4	BLACK
5	GREY

ENTER DESCRIPTION EC NO: IPG2013-0601 DRWN:PMERUNKA 2012/09/27 CHYKD:RSCHIEBER 2012/12/10 APPR:CBURGER 2012/12/13 REV B	QUALITY SYMBOLS ▽=0 ▽=0	GENERAL TOLERANCES (UNLESS SPECIFIED) <table border="1"> <tr> <th></th> <th>mm</th> <th>INCH</th> </tr> <tr> <td>4 PLACES</td> <td>± ---</td> <td>± ---</td> </tr> <tr> <td>3 PLACES</td> <td>± ---</td> <td>± ---</td> </tr> <tr> <td>2 PLACES</td> <td>± 0.05</td> <td>± ---</td> </tr> <tr> <td>1 PLACE</td> <td>± 0.10</td> <td>± ---</td> </tr> <tr> <td>0 PLACE</td> <td>± ---</td> <td>± ---</td> </tr> </table>		mm	INCH	4 PLACES	± ---	± ---	3 PLACES	± ---	± ---	2 PLACES	± 0.05	± ---	1 PLACE	± 0.10	± ---	0 PLACE	± ---	± ---	DIMENSION STYLE MM ONLY DRAWN BY: PMERUNKA DATE: 2012/06/25 CHECKED BY: RSCHIEBER DATE: 2012/12/10 APPROVED BY: CBURGER DATE: 2012/09/19	SCALE: 2:1 DESIGN UNITS: METRIC THIRD ANGLE PROJECTION	TITLE: REC U12 XP AC MA M16 BM WIR SHD BRA AU
		mm	INCH																				
	4 PLACES	± ---	± ---																				
	3 PLACES	± ---	± ---																				
2 PLACES	± 0.05	± ---																					
1 PLACE	± 0.10	± ---																					
0 PLACE	± ---	± ---																					
DRAFT WHERE APPLICABLE MUST REMAIN WITHIN DIMENSIONS		MATERIAL NO. SEE TABLE	DOCUMENT NO. SD-120084-049	SHEET NO. 2 OF 2																			
THIS DRAWING CONTAINS INFORMATION THAT IS PROPRIETARY TO MOLEX INCORPORATED AND SHOULD NOT BE USED WITHOUT WRITTEN PERMISSION																							