

4

3

2

1

THIS DRAWING IS UNPUBLISHED.
RELEASED FOR PUBLICATION SEP .2005.
COPYRIGHT 2005 BY TYCO ELECTRONICS CORPORATION. ALL RIGHTS RESERVED.

LOC	DIST	REVISIONS			
P	LTR	DESCRIPTION	DATE	DWN	APVD
C		ECR-05-011509	21SEP05	JMS	FWK

NOTES:

△ PACK IN ACCORDANCE WITH AMP SPEC 107-3275

△ 100 TRAY PACK IN ACCORDANCE WITH AMP SPEC 107-3275

△ Ag PLATING

4. ELECTRICAL CHARACTERISTICS

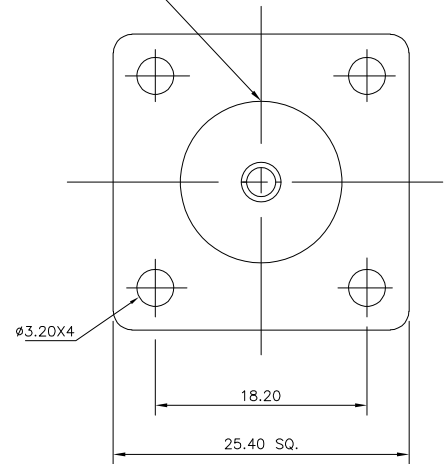
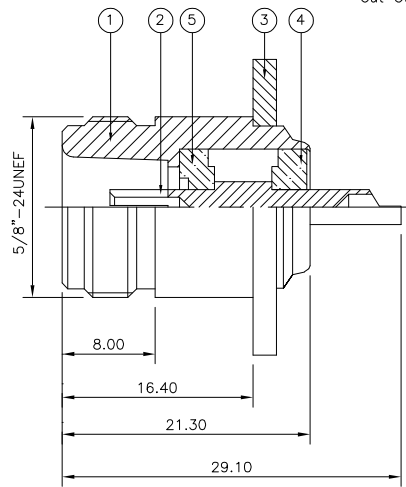
FREQUENCY RANGE: DC - 11 GHz
NOMINAL IMPEDANCE: 50 Ohm
INSULATION RESISTANCE: 5000 MOhm
WORKING VOLTAGE: 1000 Volts RMS at Sea Level
DIELECTRIC WITHSTAND VOLTAGE: 2500 Volts RMS Max
CONTACT RESISTANCE: 1.00 mOhm Max
CENTRE CONTACT: 1.00 mOhm Max
OUTER CONTACT: N/A
VSWR @ xGHz: N/A
INSERTION LOSS xdb: N/A

5. MECHANICAL CHARACTERISTICS

DURABILITY: 500 Cycles Min

6. ENVIRONMENTAL CHARACTERISTICS

OPERATING TEMPERATURE: -65 to +165 DegC



	1	1	PTFE	INSULATION	5
	1	1	PTFE	INSULATION	4
	1	1	BRASS	△ HOUSING	3
	1	1	BRASS	△ CONTACT	2
	1	1	BRASS	△ BODY	1
	6--0	1--0	MATERIAL	DESCRIPTION	ITEM
	△	△			

THIS DRAWING IS A CONTROLLED DOCUMENT.		OWN J.SANDWELL 21SEP05	Tyco Electronics Corporation		
DIMENSIONS: mm		CHK S.PARLOW 21SEP05	Blidford EX39 4HE		
TOLERANCES UNLESS OTHERWISE SPECIFIED:		APVD F.WHEELER-KING 21SEP05	NAME TYPE-N PANEL SOCKET 50 OHM		
0 PLC ±		PRODUCT SPEC 108-3435	SIZE CAGE CODE DRAWING NO RESTRICTED TO		
1 PLC ±		APPLICATION SPEC	A3 00779 C=1337418		
2 PLC ±		WEIGHT	CUSTOMER DRAWING		
3 PLC ±			SCALE NTS SHEET 1 OF 1 REV C		
4 PLC ±					
MATERIAL SEE TABLE		FINISH SEE TABLE			

AMP 1470-19 REV 31MAR2000