

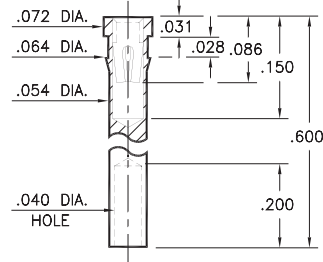
# PIN RECEPTACLES

FOR .015" - .025" DIAMETER PINS

## 1707

1707-0-19-XX-30-XX-10-0

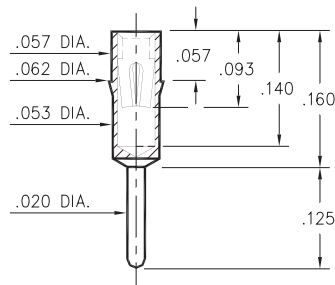
Press-fit in .061 mounting hole  
Wire Crimp Termination. Accepts wire sizes 22 AWG Max. / 24 AWG Min.



## 0240

0240-0-15-XX-30-XX-04-0

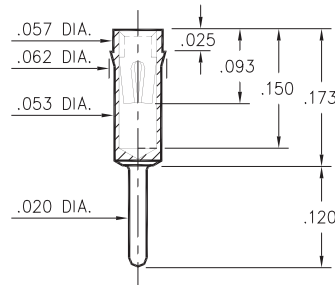
Press-fit in .059 mounting hole



## 0307

0307-0-15-XX-30-XX-04-0

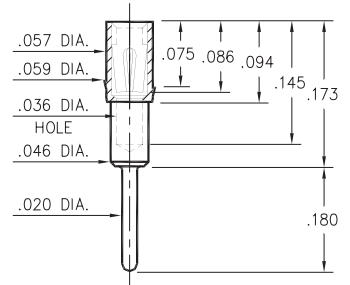
Press-fit in .059 mounting hole



## 1753

1753-0-15-XX-30-XX-04-0

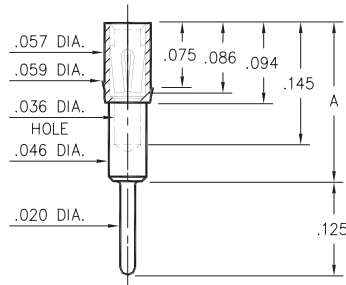
Press-fit in .057 mounting hole



## 1705/1706/1762

17XX-0-15-XX-3X-XX-04-0

Press-fit in .057 mounting hole

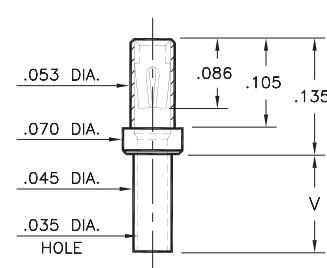


Basic Part Number	Height A
1705-0	.165
1706-0	.218
1762-0	.300

## 0672

0672-X-15-XX-30-XX-10-0

Swage mount in .049 hole

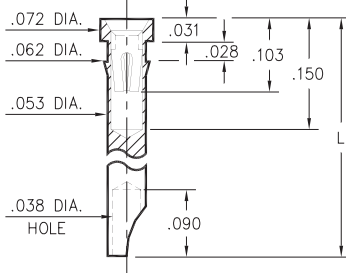


Basic Part Number	Board Thickness	Length V
0672-1	.031	.052
0672-2	.062	.084
0672-3	.094	.115
0672-4	.125	.146

## 1024/1104

1XX4-0-18-XX-30-XX-10-0

Press-fit in .059 mounting hole  
Accepts wire sizes up to .028" dia.

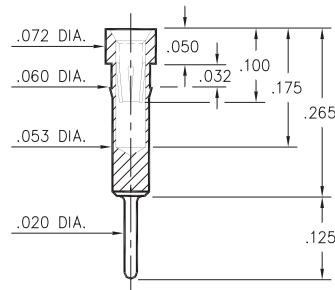


Basic Part Number	Length L
1024-0	.290
1104-0	.450

## 0498

0498-0-15-XX-35-XX-04-0

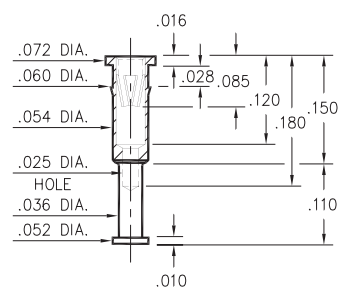
Press-fit in .057 mounting hole



## 8131

8131-0-15-XX-30-XX-10-0

Press-fit in .057 mounting hole



### SPECIFICATIONS:

Shell Material: Brass Alloy 360, 1/2 Hard

Contact Material: Beryllium Copper Alloy 172, HT

Dimensions: Inches

Tolerances On: Lengths: ±.005

Diameters: ±.002

Angles: ± 2°



ORDER CODE: XXXX - X - 1X - XX - XX - XX - XX - 0

BASIC PART #

SPECIFY SHELL FINISH:

- 01 200 μ" TIN/LEAD OVER NICKEL
- ◆ 80 200 μ" TIN OVER NICKEL (RoHS)
- ◆ 15 10 μ" GOLD OVER NICKEL (RoHS)

SPECIFY CONTACT FINISH:

- 02 100 μ" TIN/LEAD OVER NICKEL
- ◆ 84 100 μ" TIN OVER NICKEL (RoHS)
- ◆ 27 30 μ" GOLD OVER NICKEL (RoHS)

SELECT CONTACT:

#30 or #35 CONTACT (DATA ON PAGE 253 & 254)

(For alternate contact choices, see groups B and C on page 248)



# Mouser Electronics

Authorized Distributor

Click to View Pricing, Inventory, Delivery & Lifecycle Information:

## Mill-Max:

[1762-0-15-01-30-02-04-0](#) [1762-0-15-01-30-27-04-0](#) [1753-0-15-01-30-02-04-0](#) [1753-0-15-01-30-27-04-0](#) [1707-0-19-01-30-02-10-0](#) [1707-0-19-01-30-27-10-0](#) [1706-0-15-01-35-02-04-0](#) [1706-0-15-01-35-27-04-0](#) [1705-0-15-01-30-27-04-0](#) [0240-0-15-80-30-84-04-0](#) [0240-0-15-80-30-27-04-0](#) [0240-0-15-01-30-27-04-0](#) [1104-0-18-01-30-02-10-0](#) [1104-0-18-01-30-27-10-0](#) [1024-0-18-01-30-02-10-0](#) [1024-0-18-01-30-27-10-0](#) [0672-4-15-01-30-02-10-0](#) [0672-4-15-01-30-27-10-0](#) [0672-3-15-01-30-02-10-0](#) [0672-3-15-01-30-27-10-0](#) [0672-2-15-01-30-02-10-0](#) [0672-2-15-01-30-27-10-0](#) [0672-1-15-01-30-02-10-0](#) [0672-1-15-01-30-27-10-0](#) [0498-0-15-01-35-02-04-0](#) [0498-0-15-01-35-27-04-0](#) [0307-0-15-01-30-02-04-0](#) [0307-0-15-01-30-27-04-0](#) [0240-0-15-01-30-02-04-0](#) [0240-0-15-15-30-27-04-0](#) [0307-0-15-15-30-27-04-0](#) [0498-0-15-15-35-27-04-0](#) [0672-1-15-15-30-27-10-0](#) [0672-2-15-15-30-27-10-0](#) [0672-3-15-15-30-27-10-0](#) [0672-4-15-15-30-27-10-0](#) [1104-0-18-15-30-27-10-0](#) [1705-0-15-15-30-27-04-0](#) [1706-0-15-15-35-27-04-0](#) [1707-0-19-15-30-27-10-0](#) [1753-0-15-15-30-27-04-0](#) [1762-0-15-15-30-27-04-0](#) [1707-0-19-00-00-00-10-0](#) [1762-0-15-00-00-00-04-0](#) [1753-0-15-00-00-00-04-0](#) [8131-0-15-00-00-00-10-0](#) [0672-2-15-00-00-00-10-0](#) [1706-0-15-00-00-00-04-0](#) [1104-0-18-00-00-00-10-0](#) [0307-0-15-00-00-00-04-0](#) [0672-4-15-00-00-00-10-0](#) [0672-1-15-00-00-00-10-0](#) [0672-3-15-00-00-00-10-0](#) [1705-0-15-00-00-00-04-0](#) [1706-0-15-01-35-14-04-0](#) [1762-0-15-01-30-14-04-0](#) [1707-0-19-01-30-14-10-0](#) [0672-1-15-01-30-14-10-0](#) [1753-0-15-01-30-14-04-0](#) [0307-0-15-01-30-14-04-0](#) [0240-0-15-80-30-14-04-0](#) [0672-1-15-80-30-14-10-0](#) [1705-0-15-80-30-14-04-0](#) [1706-0-15-80-35-14-04-0](#) [1753-0-15-80-30-14-04-0](#) [0240-0-15-01-30-14-04-0](#) [1707-0-19-80-30-14-10-0](#) [0307-0-15-80-30-14-04-0](#) [0672-4-15-80-30-14-10-0](#) [0672-3-15-80-30-14-10-0](#) [0672-2-15-80-30-14-10-0](#) [1024-0-18-80-30-14-10-0](#) [0498-0-15-80-35-14-04-0](#) [0672-3-15-01-30-14-10-0](#) [0672-2-15-01-30-14-10-0](#) [1762-0-15-80-30-14-04-0](#) [1705-0-15-01-30-14-04-0](#) [1104-0-18-01-30-14-10-0](#) [1024-0-18-01-30-14-10-0](#) [1104-0-18-80-30-14-10-0](#) [0498-0-15-01-35-14-04-0](#) [0672-4-15-01-30-14-10-0](#) [0672-2-15-15-30-14-10-0](#) [0672-1-15-15-30-14-10-0](#) [0672-3-15-15-30-14-10-0](#) [0672-4-15-15-30-14-10-0](#)