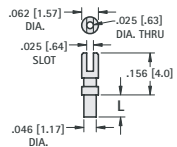


SPLIT-TYPE (FORK) TURRETS

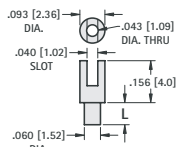
1515



Staking Tool Special Order

| CAT. NO. | L |
|----------|-------------|
| 1515-1 | .051 (1.30) |
| 1515-2 | .082 (2.08) |
| 1515-3 | .113 (2.8) |
| 1515-4 | .145 (3.6) |

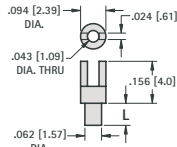
1533



Staking Tool Special Order

| CAT. NO. | L |
|----------|-------------|
| 1533-2 | .084 (2.13) |
| 1533-3 | .115 (2.9) |
| 1533-4 | .147 (3.7) |

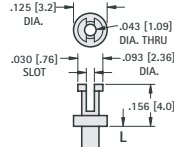
1526



Staking Tool No. TL-3

| CAT. NO. | L |
|----------|-------------|
| 1526-1 | .054 (1.37) |
| 1526-2 | .084 (2.13) |
| 1526-3 | .115 (2.9) |
| 1526-4 | .147 (3.7) |

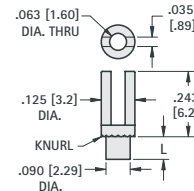
1592



Staking Tool No. TL-2

| CAT. NO. | L |
|----------|-------------|
| 1592-1 | .051 (1.30) |
| 1592-2 | .082 (2.08) |
| 1592-3 | .113 (2.8) |
| 1592-4 | .145 (3.6) |

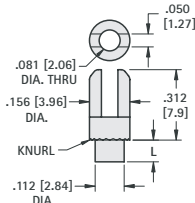
1511



Staking Tool No. TL-3

| CAT. NO. | L |
|----------|------------|
| 1511-2 | .109 (2.8) |
| 1511-3 | .141 (3.5) |
| 1511-4 | .172 (4.4) |

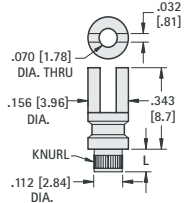
1510



Staking Tool No. TL-9

| CAT. NO. | L |
|----------|------------|
| 1510-2 | .109 (2.8) |
| 1510-3 | .141 (3.5) |
| 1510-4 | .172 (4.4) |

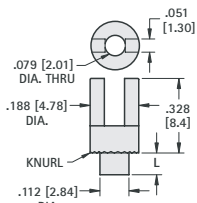
1525



Staking Tool No. TL-9

| CAT. NO. | L |
|----------|------------|
| 1525-2 | .109 (2.8) |
| 1525-3 | .141 (3.5) |
| 1525-4 | .172 (4.4) |

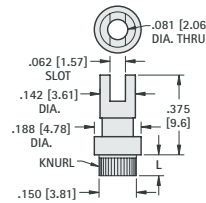
1507



Staking Tool Special Order

| CAT. NO. | L |
|----------|------------|
| 1507-2 | .109 (2.8) |
| 1507-3 | .141 (3.5) |
| 1507-4 | .172 (4.4) |

1557



Staking Tool No. TL-9

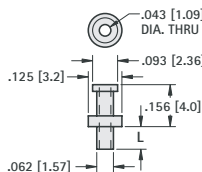
| CAT. NO. | L |
|----------|------------|
| 1557-2 | .109 (2.8) |
| 1557-3 | .141 (3.5) |
| 1557-4 | .172 (4.4) |

SPECIAL TURRET TERMINALS

Custom turret terminals can be machined to your exact specifications. Standard and special terminals can be staked onto special boards. Please email/fax your design to our Engineering Department.

TUBULAR TURRETS

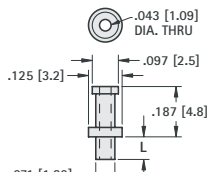
1562



Staking Tool No. TL-2

| CAT. NO. | L |
|----------|-------------|
| 1562-1 | .054 (1.37) |
| 1562-2 | .084 (2.13) |
| 1562-3 | .115 (2.9) |
| 1562-4 | .147 (3.7) |

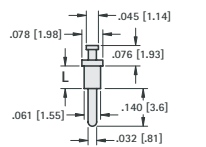
1559



Staking Tool No. TL-2

| CAT. NO. | L |
|----------|-------------|
| 1559-1 | .062 (1.57) |
| 1559-2 | .094 (2.39) |
| 1559-3 | .125 (3.2) |
| 1559-4 | .156 (3.9) |

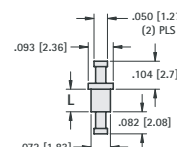
1633



Staking Tool Special Order

| CAT. NO. | L |
|----------|-------------|
| 1633-1 | .051 (1.30) |
| 1633-2 | .082 (2.08) |
| 1633-3 | .113 (2.8) |
| 1633-4 | .145 (3.6) |

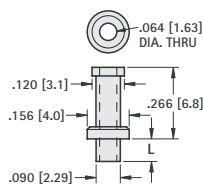
1574



Staking Tool No. TL-4

| CAT. NO. | L |
|----------|-------------|
| 1574-1 | .051 (1.30) |
| 1574-2 | .082 (2.08) |
| 1574-3 | .113 (2.8) |
| 1574-4 | .145 (3.6) |

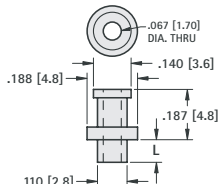
1540



Staking Tool No. TL-5

| CAT. NO. | L |
|----------|------------|
| 1540-2 | .109 (2.8) |
| 1540-3 | .141 (3.5) |
| 1540-4 | .172 (4.4) |

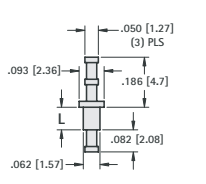
1519



Staking Tool No. TL-8

| CAT. NO. | L |
|----------|-------------|
| 1519-1 | .078 (1.98) |
| 1519-2 | .109 (2.8) |
| 1519-3 | .141 (3.5) |
| 1519-4 | .172 (4.4) |

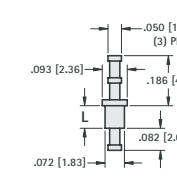
1613



Staking Tool No. TL-4

| CAT. NO. | L |
|----------|-------------|
| 1613-1 | .051 (1.30) |
| 1613-2 | .082 (2.08) |
| 1613-3 | .113 (2.8) |
| 1613-4 | .145 (3.6) |

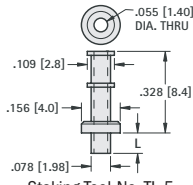
1575



Staking Tool No. TL-4

| CAT. NO. | L |
|----------|-------------|
| 1575-1 | .051 (1.30) |
| 1575-2 | .082 (2.08) |
| 1575-3 | .113 (2.8) |
| 1575-4 | .145 (3.6) |

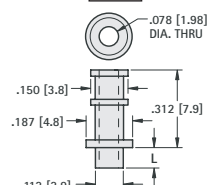
1582



Staking Tool No. TL-5

| CAT. NO. | L |
|----------|-------------|
| 1582-1 | .075 (1.91) |
| 1582-2 | .105 (2.7) |
| 1582-3 | .135 (3.4) |
| 1582-4 | .165 (4.2) |

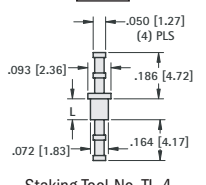
1509



Staking Tool No. TL-8

| CAT. NO. | L |
|----------|-------------|
| 1509-1 | .078 (1.98) |
| 1509-2 | .109 (2.8) |
| 1509-3 | .141 (3.5) |
| 1509-4 | .172 (4.4) |

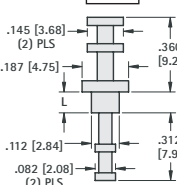
1583



Staking Tool No. TL-4

| CAT. NO. | L |
|----------|-------------|
| 1583-1 | .051 (1.30) |
| 1583-2 | .082 (2.08) |
| 1583-3 | .113 (2.8) |
| 1583-4 | .145 (3.6) |

1545



Staking Tool No. TL-12

| CAT. NO. | L |
|----------|------------|
| 1545-2 | .105 (2.7) |
| 1545-3 | .135 (3.4) |
| 1545-4 | .165 (4.2) |

TURRET TERMINALS