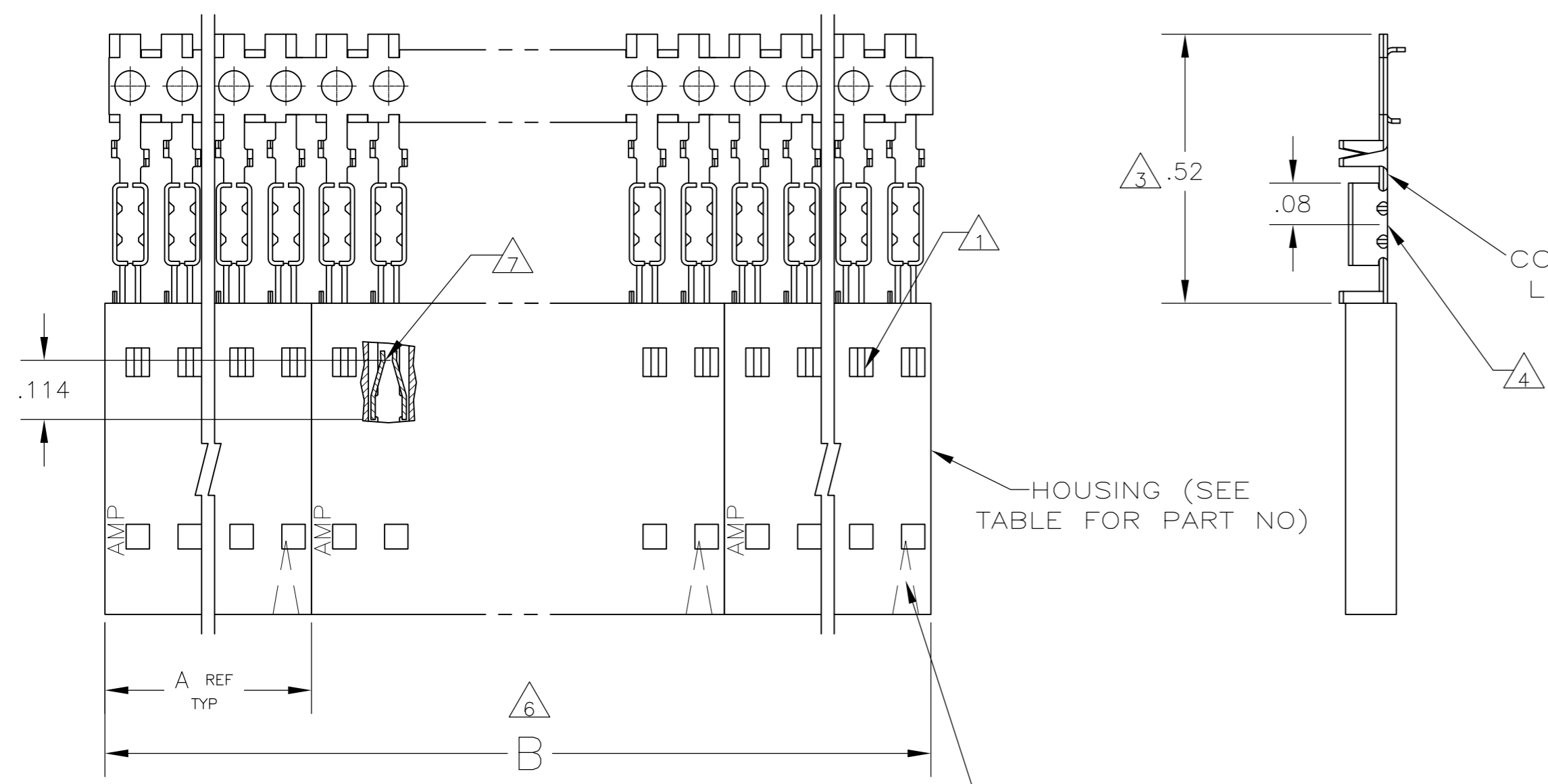


LOC		DIST		REVISIONS			
AD	00	P	LTR	DESCRIPTION	DATE	DWN	APVD
		K2		REVISED PER ECO-11-004587	11MAR11	RK	HMR

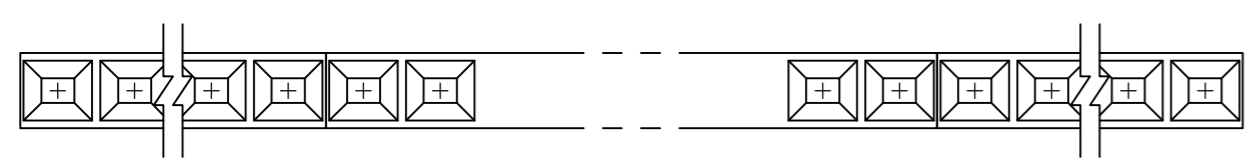


CONTACT IDENTIFICATION LETTER "B" (LOCATED IN THIS AREA)

HOUSING (SEE TABLE FOR PART NO)

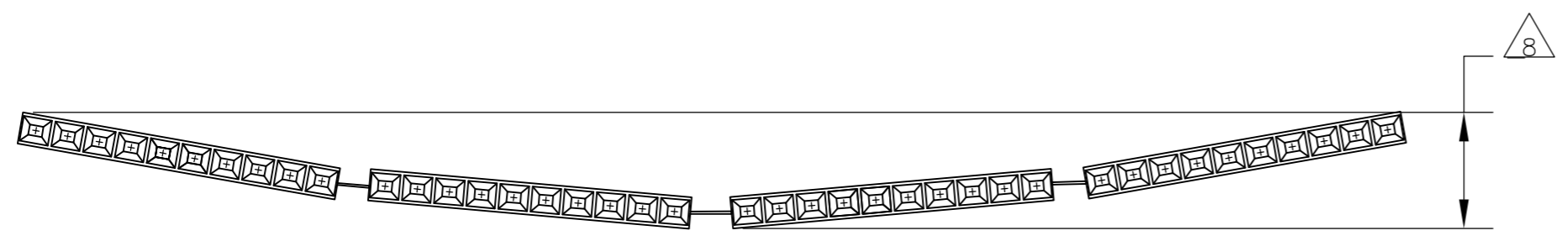
POSITION #1 INDICATOR (FAR SIDE)

- 1 CONTACTS ARE LATCHED INTO THE PRELOAD WINDOWS
- 2 USE WITH #22-#26 AWG WIRE SIZE, .054/.030 INSULATION DIAMETER, .015 MAXIMUM INSULATION THICKNESS
- 3 THE DIMENSION APPLIES WITH THE FORWARD PRELOAD STOP IN CONTACT WITH THE HOUSING SURFACE
- 4 POINT OF MEASUREMENT FOR PLATING THICKNESS
- 5 FOR INDIVIDUAL ASSEMBLIES SEE PART NUMBER 103902
- 6 ASSEMBLIES ARE JOINED BY THE CARRIER STRIP. ORDER QUANTITY REFLECTS TOTAL NUMBER OF INDIVIDUAL ASSEMBLIES REQUIRED. SEE TABLE FOR NUMBER OF ASSEMBLIES PER STRIP.
- 7 POINT OF MEASUREMENT FOR PLATING THICKNESS (INSIDE BEAMS)
- 8 MAXIMUM ALLOWABLE BOW OF ASSEMBLY NOT TO EXCEED .055.
- 9 FINISH: CONTACTS: .000030 GOLD IN THE CONTACT AREA, .000050-.000100 BRIGHT TIN-LEAD ON THE TERMINATION AREA, ALL OVER .000050 NICKEL
- 10 FINISH: CONTACTS: .000030 GOLD IN THE CONTACT AREA, .000050-.000100 MATTE TIN ON THE TERMINATION AREA, ALL OVER .000050 NICKEL
- 11 OBSOLETE PARTS: OBSOLETE CIS STREAMLINING PER D.RENAUD/D.SINISI



11	OBSOLETE	10	2	2.40	1.198	1-103688-1	12	6-103976-1
		10	2	2.20	1.098	1-103688-0	11	6-103976-0
		10	2	2.00	.998	103688-9	10	5-103976-9
		10	2	1.80	.898	103688-8	9	5-103976-8
		10	2	1.60	.798	103688-7	8	5-103976-7
		10	2	1.40	.698	103688-6	7	5-103976-6
		10	4	2.39	.598	103688-5	6	5-103976-5
		10	4	1.99	.498	103688-4	5	5-103976-4
		10	5	1.99	.398	103688-3	4	5-103976-3
		10	8	2.40	.298	103688-2	3	5-103976-2
		10	10	2.00	.198	103688-1	2	5-103976-1
11	OBSOLETE	9	2	2.40	1.198	1-103688-1	12	1-103976-1
		9	2	2.20	1.098	1-103688-0	11	1-103976-0
		9	2	2.00	.998	103688-9	10	103976-9
		9	2	1.80	.898	103688-8	9	103976-8
		9	2	1.60	.798	103688-7	8	103976-7
		9	2	1.40	.698	103688-6	7	103976-6
		9	4	2.39	.598	103688-5	6	103976-5
		9	4	1.99	.498	103688-4	5	103976-4
		9	5	1.99	.398	103688-3	4	103976-3
		9	8	2.40	.298	103688-2	3	103976-2
		9	10	2.00	.198	103688-1	2	103976-1
		PLATING	6	B	A	HOUSING PART NUMBER	NO OF POSN	ASSEMBLY PART NUMBER ON STRIP

11 SUPERSEDED BY 5-103976-6



EXAMPLE: STRIP ASSEMBLY SCALE 2:1

THIS DRAWING IS A CONTROLLED DOCUMENT. DWN L.MAYER 05 NOV 86
 CHK P.C.DEJONG 12-11-86
 APVD P.C.DEJONG 12-11-86

STE TE Connectivity

RCPT ASSY, AMPMODU MTE, SINGLE ROW, .100 C/L, FOR NOS22-NOS26 AWG WIRE SIZE, STRIP FORM

SIZE CAGE CODE DRAWING NO RESTRICTED TO
 A2 00779 C=103976

MATERIAL: HOUSING: FLAME RETARDANT THERMOPLASTIC, COLOR: BLACK CONTACTS: PHOS BRONZE
 DIMENSIONS: INCHES TOLERANCES UNLESS OTHERWISE SPECIFIED:
 0 PLC ± -
 1 PLC ± -
 2 PLC ± .02
 3 PLC ± .005
 4 PLC ± -
 ANGLES ± -
 FINISH SEE TABLE

WEIGHT -
 CUSTOMER DRAWING SCALE 4:1 SHEET 1 of 1 REV K2

Mouser Electronics

Authorized Distributor

Click to View Pricing, Inventory, Delivery & Lifecycle Information:

[TE Connectivity:](#)

[103976-4](#)