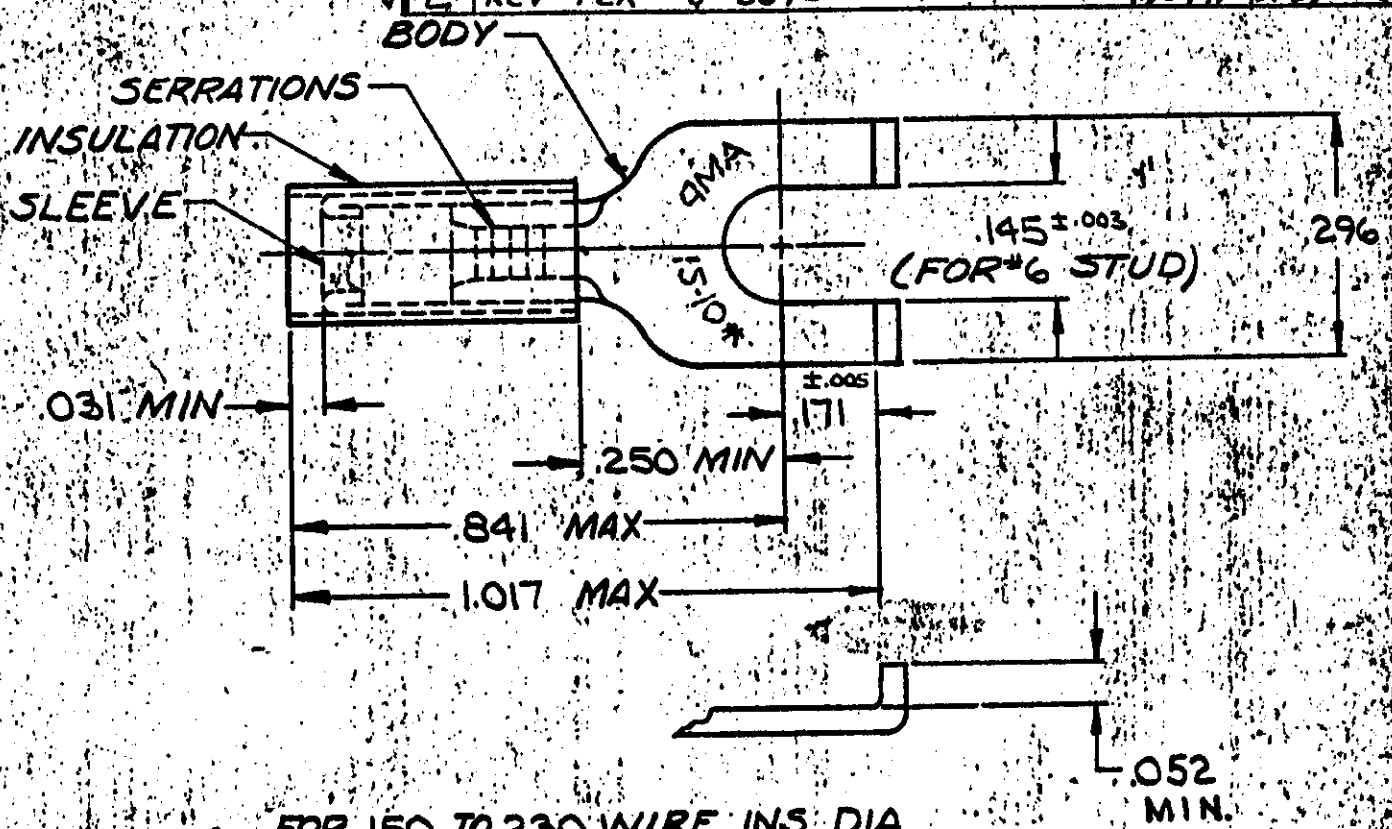


DRAWING MADE IN AMERICAN PROJECTION

LOC 6 PRINT DIST 14

©1957 BY AMP INCORPORATED. ALL RIGHTS RESERVED. AMP PRODUCTS COVERED BY PATENTS AND/OR PATENTS PENDING.

REVISIONS			
LTR	DESCRIPTION	DATE	APPROVED
B	REDRAWN & ADDED TAPE NO'S P-6080	5-8-70	<i>[Signature]</i>
C	REVISED F-636 & P-6925	9-9-74	P.M. Magliaro
D	REV PER G-4732	7/26/88	<i>[Signature]</i>
E	REV PER G-5646	1/21/91	DKS/mk



QTY	DESCRIPTION	PART NO	MATERIAL & FINISH
1	324577 ON TAPE	1-324577-0	SLEEVE: COPPER (QQ-C-576) BODY: COPPER (QQ-C-576) TIN PL (MIL-T-10727)
1	WIRE TERMINAL	324577	INSULATION: NYLON COLOR: YELLOW

UNLESS OTHERWISE SPECIFIED DIMENSIONS ARE IN INCHES TOLERANCES ON DECIMALS ± .008 ANGLES ± 5°	CONTRACT NO.	AMP INCORPORATED HARRISBURG, PENNSYLVANIA		
	DR. <i>W. J. Miller</i> 5-4-70	NAME WIRE TERMINAL P.I.D.G. - FLANGED SPADE WIRE SIZE: 12-10		
	CHK <i>Dr. E. ...</i> 5-8-70			
	APPD <i>L. W. ...</i> 5-11-70	SIZE A	CODE IDENT NO. 00779	NUMBER 324577
	REL <i>H. Young</i> 5-11-70	SCALE NTS	SHEET 1 OF 1	
SEE TABLE	OTHER APPD			

Mouser Electronics

Authorized Distributor

Click to View Pricing, Inventory, Delivery & Lifecycle Information:

[TE Connectivity:](#)

[1-324577-0](#)