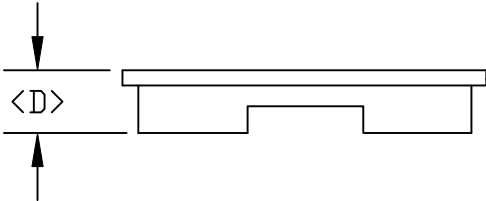
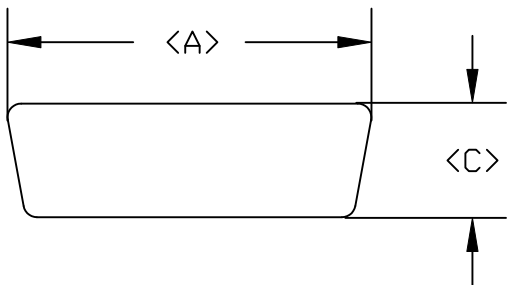


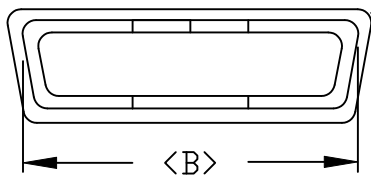
DESCRIPTION: DUST COVER FEMALE

DIMENSIONS

	A	B	C	D
9	.887	.783	.520	.262
	22.53	19.88	13.21	6.65
15	1.222	1.113	.520	.262
	31.03	28.27	13.21	6.65
25	1.752	1.645	.520	.262
	44.51	41.79	13.21	6.65
37	2.420	2.310	.520	.283
	61.47	58.67	13.21	7.19
50	2.154	2.154	.543	.315
	54.70	54.7	13.80	8.00



50 POSITION HAS NO LIP



50 POSITION HAS NO LIP

PART NUMBER

09	160-000-209R000
15	160-000-215R000
25	160-000-225R000
37	160-000-237R000
50	160-000-250L000 (DISCONTINUED)

MATERIAL:  
 PLASTIC: PE  
 RoHS COMPLIANT

	THESE DRAWINGS AND SPECIFICATIONS ARE THE PROPERTY OF NorComp AND SHALL NOT BE REPRODUCED, COPIED OR USED AS THE BASIS FOR THE MANUFACTURE OF SALE OF APPARATUS WITHOUT WRITTEN PERMISSION.		DRAWN: <b>PAM JENKINS</b>	DATE: <b>12-05-05</b>	
	NorComp			CHECKED:	DATE:
SCALE:				SHEET <b>1</b> OF <b>1</b>	REV <b>2</b>
DWG NO. <b>160-000-2YYR000</b>					

# Mouser Electronics

Authorized Distributor

Click to View Pricing, Inventory, Delivery & Lifecycle Information:

[NorComp:](#)

[160-000-225R000](#) [160-000-209R000](#) [160-000-215R000](#) [160-000-237R000](#) [160-000-250R000](#) [160-000-209R002](#)