

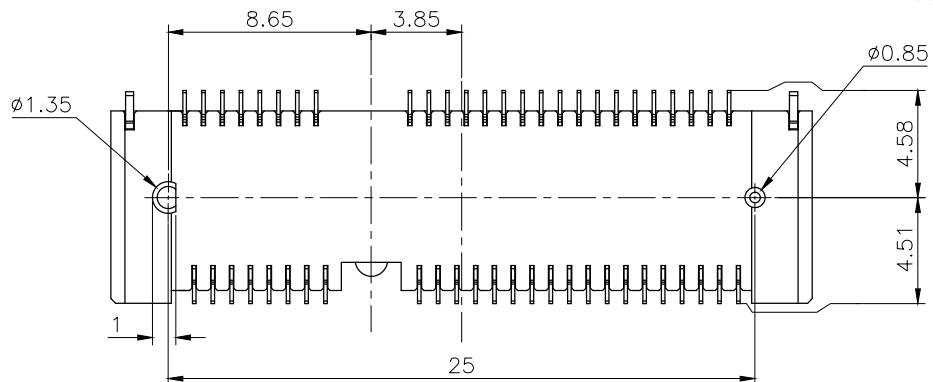
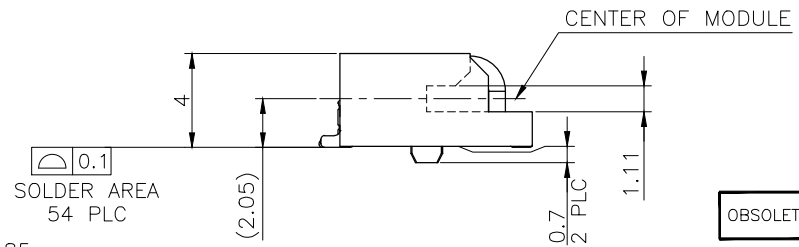
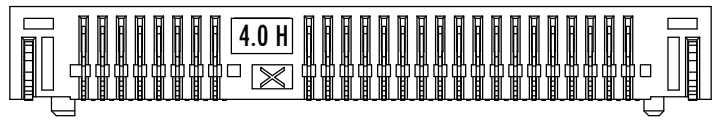
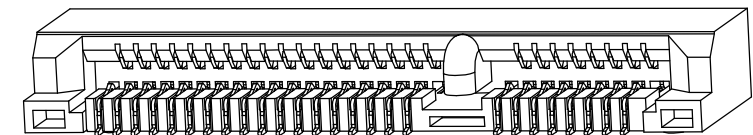
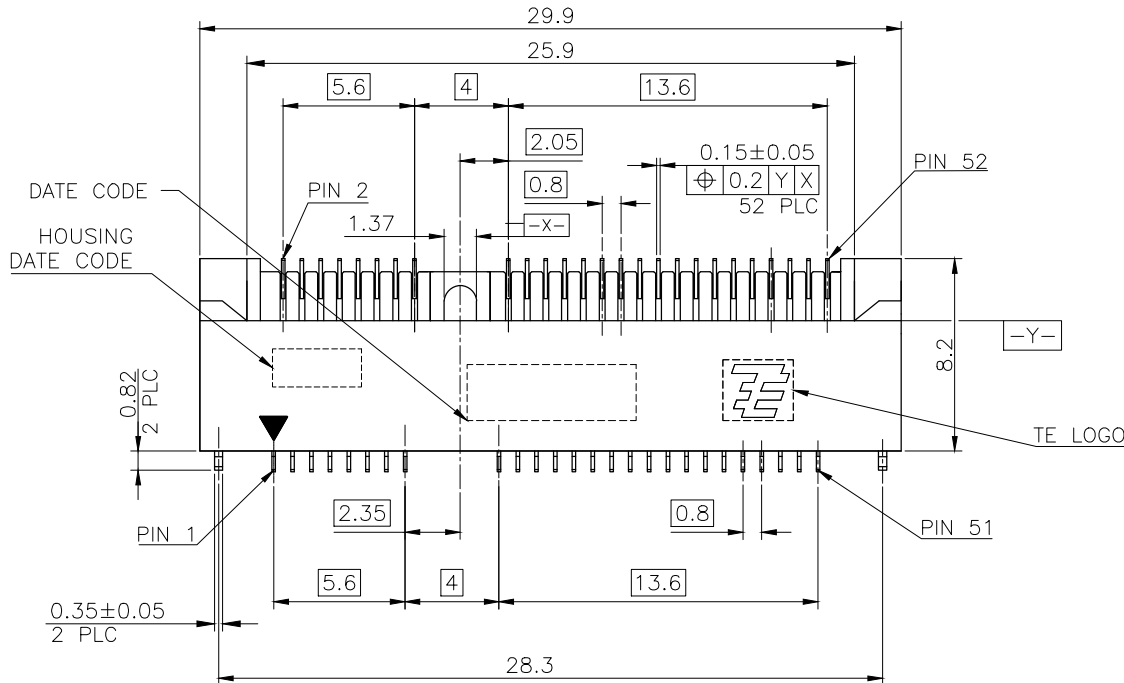
THIS DRAWING IS UNPUBLISHED. RELEASED FOR PUBLICATION
 © COPYRIGHT 2012 BY TE CONNECTIVITY. ALL RIGHTS RESERVED.

| LOC | | DIST | | REVISIONS | | | |
|-----|-----|------------------------|---------|-----------|----|--|--|
| P | LTR | DATE | DWN | APVD | | | |
| F1 | | REvised (ECR14-004907) | 04AUG14 | SW | HL | | |

NOTES:

- MATERIAL:
HOUSING: LCP WITH 30% GF, UL 94V-0, BLACK COLOR.
CONTACTS: PHOSPHOR BRONZE.
PEGS: BRASS.
- FINISH:
CONTACTS: (SEE TABLE) GOLD PLATED ON CONTACT AREA, WITH GOLD FLASH OVER 1.27µm [50µ"] MIN. NICKEL ON ENTIRE CONTACT.

PEGS: 3.048µm [120µ"] MIN. MATTE-TIN OVER 1.27µm [50µ"] MIN. NICKEL.
- REFLOW SOLDER CAPABLE TO 260° PER TEC-109-201, CONDITION B.
- SUBSTANCE RESTRICTIONS FOR LOW HALOGEN (BY WEIGHT):
 - BROMINE (Br) ≤ 900 PPM (0.09%)
 - CHLORINE (Cl) ≤ 900 PPM (0.09%)
 - TOTAL CONCENTRATION OF CHLORINE (Cl) + BROMINE (Br) ≤ 1500 PPM (0.15%)



| OBSELETE | TYPE II | 0.254µm -[10µ"] | 1-1775861-3 |
|----------|--------------|---------------------|-------------|
| | | GOLD FLASH | 1-1775861-2 |
| | TYPE I | 0.0762µm [5µ"] | 1775861-4 |
| | | GOLD FLASH | 1775861-2 |
| OBSELETE | | 0.254µm -[10µ"] | 1775861-1 |
| | PACKING TYPE | MIN. GOLD THICKNESS | PART NUMBER |

| | | | | | |
|---|--|---------------------------|-----------|--|--------------------|
| THIS DRAWING IS A CONTROLLED DOCUMENT. | | DWN A. WU | 25SEP2009 | | |
| DIMENSIONS: MM | | CHK S. CHIEN | 25SEP2009 | | |
| TOLERANCES UNLESS OTHERWISE SPECIFIED: | | APVD W. KODAMA | 25SEP2009 | NAME | |
| 0 PLC ± - 1 PLC ±0.3 2 PLC ±0.2 3 PLC ± - 4 PLC ± - ANGLES ± ° | | PRODUCT SPEC 108-99102 | | 2 IN 1 mSATA & PCI EXPRESS MINI CARD CONNECTOR, 4 MM HEIGHT | |
| MATERIAL SEE NOTE | | FINISH SEE NOTE | | SIZE A2 | CAGE CODE 00779 |
| | | WEIGHT 1.172 GRAMS | | DRAWING NO C=1775861 | RESTRICTED TO - |
| | | CUSTOMER DRAWING | | SCALE - | SHEET 1 of 4 |
| | | | | REV F1 | |

| LOC | DIST | REVISIONS | DATE | DWN | APVD |
|--------------|------|-------------|------|-----|------|
| DW | - | | | | |
| P LTR | | DESCRIPTION | | | |
| SEE SHEET 1. | | | | | |

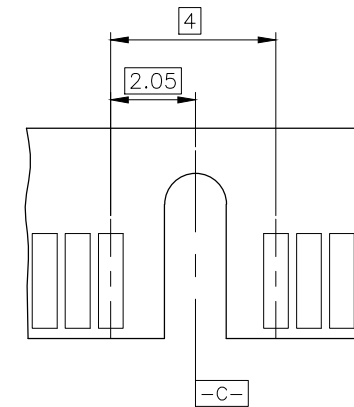
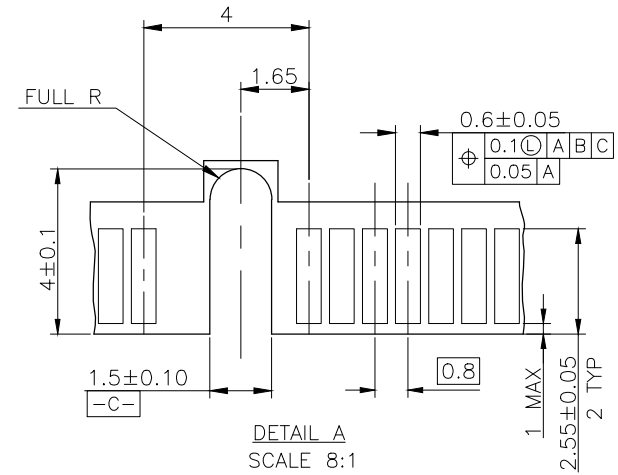
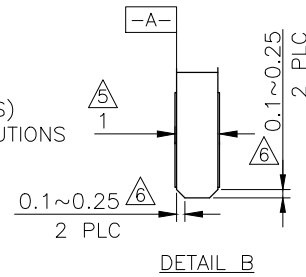
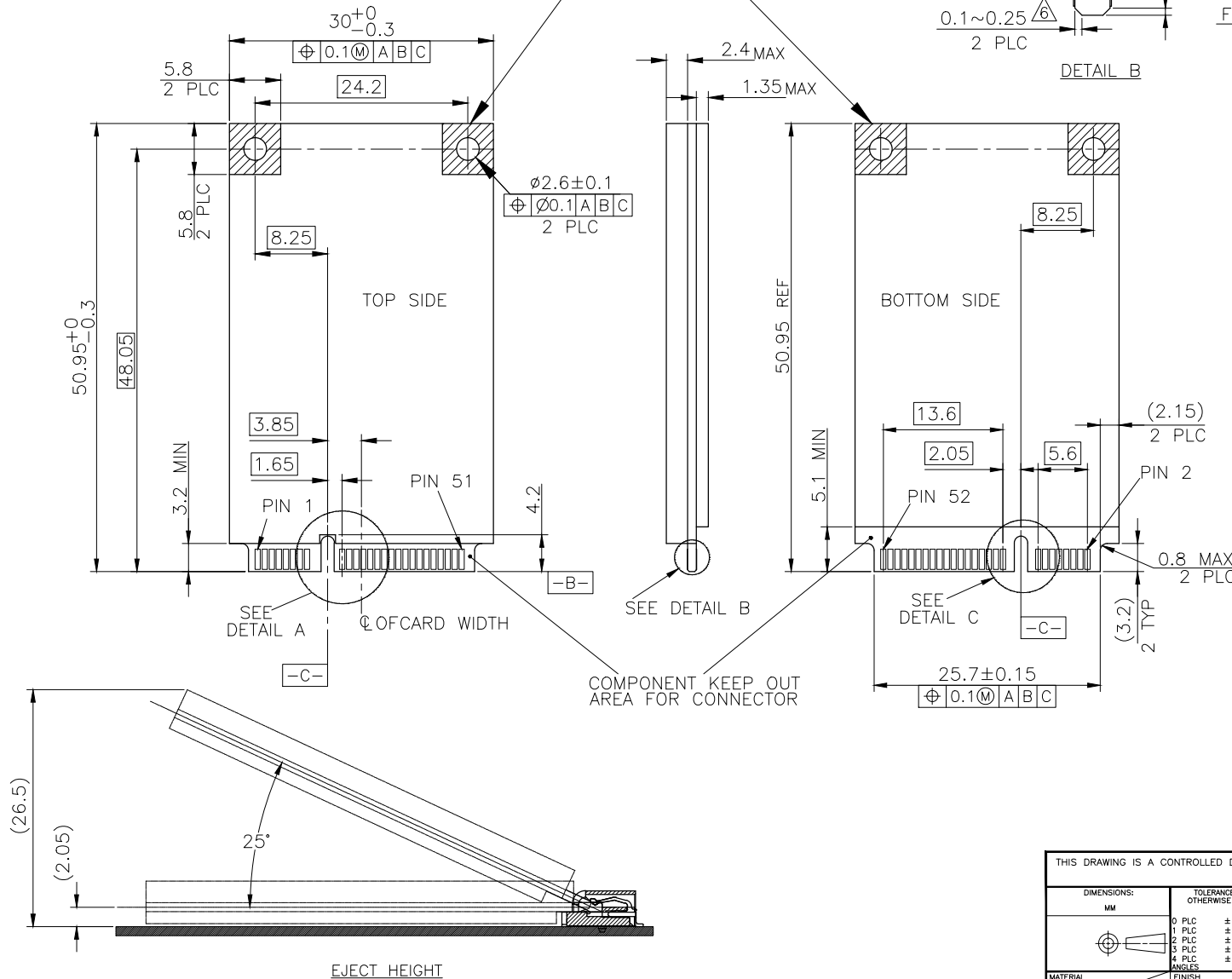
4. PCI EXPRESS MINI CARD, PCB THICKNESS 1 MM.

△. CARD THICKNESS APPLIES ACROSS TABS AND INCLUDES PLATING AND/OR METALIZATION.

△. BEVEL MUST BE FREE OF CUTTING BURRS.

COMPONENT AND ROUTING (ALL LAYERS) KEEP OUT AREA FOR HOLD DOWN SOLUTIONS

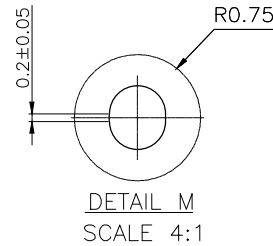
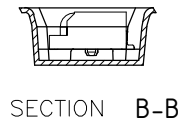
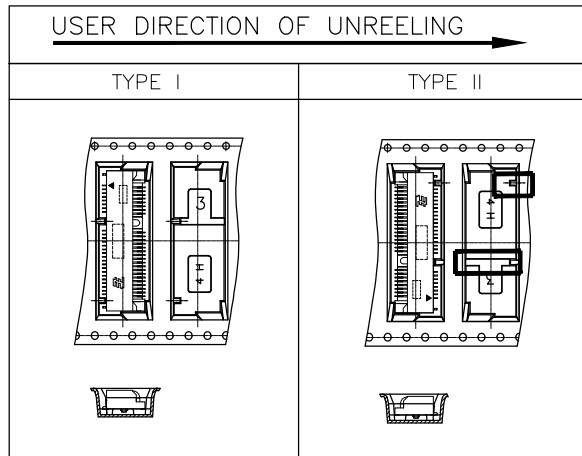
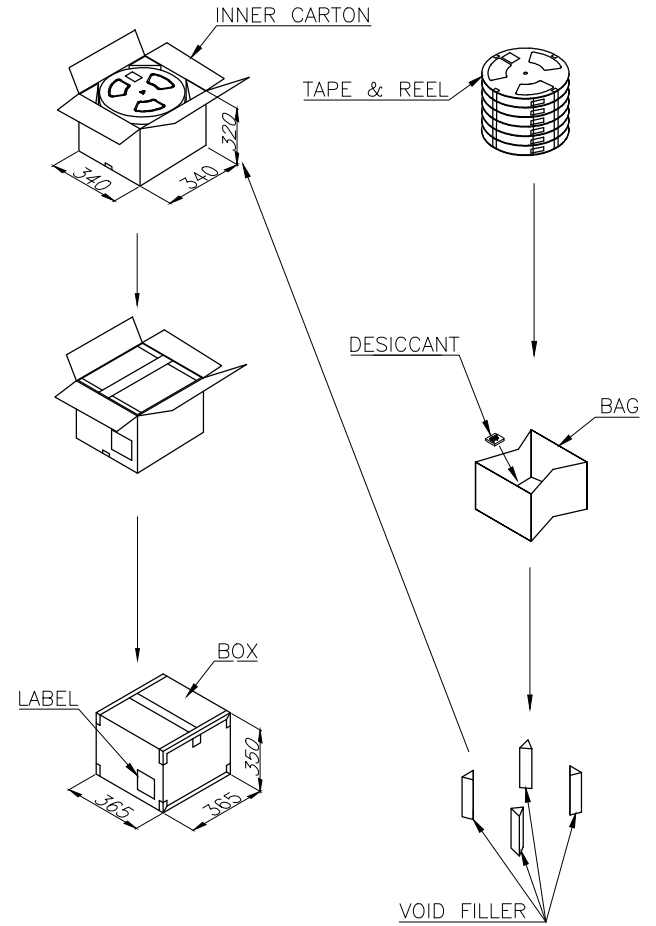
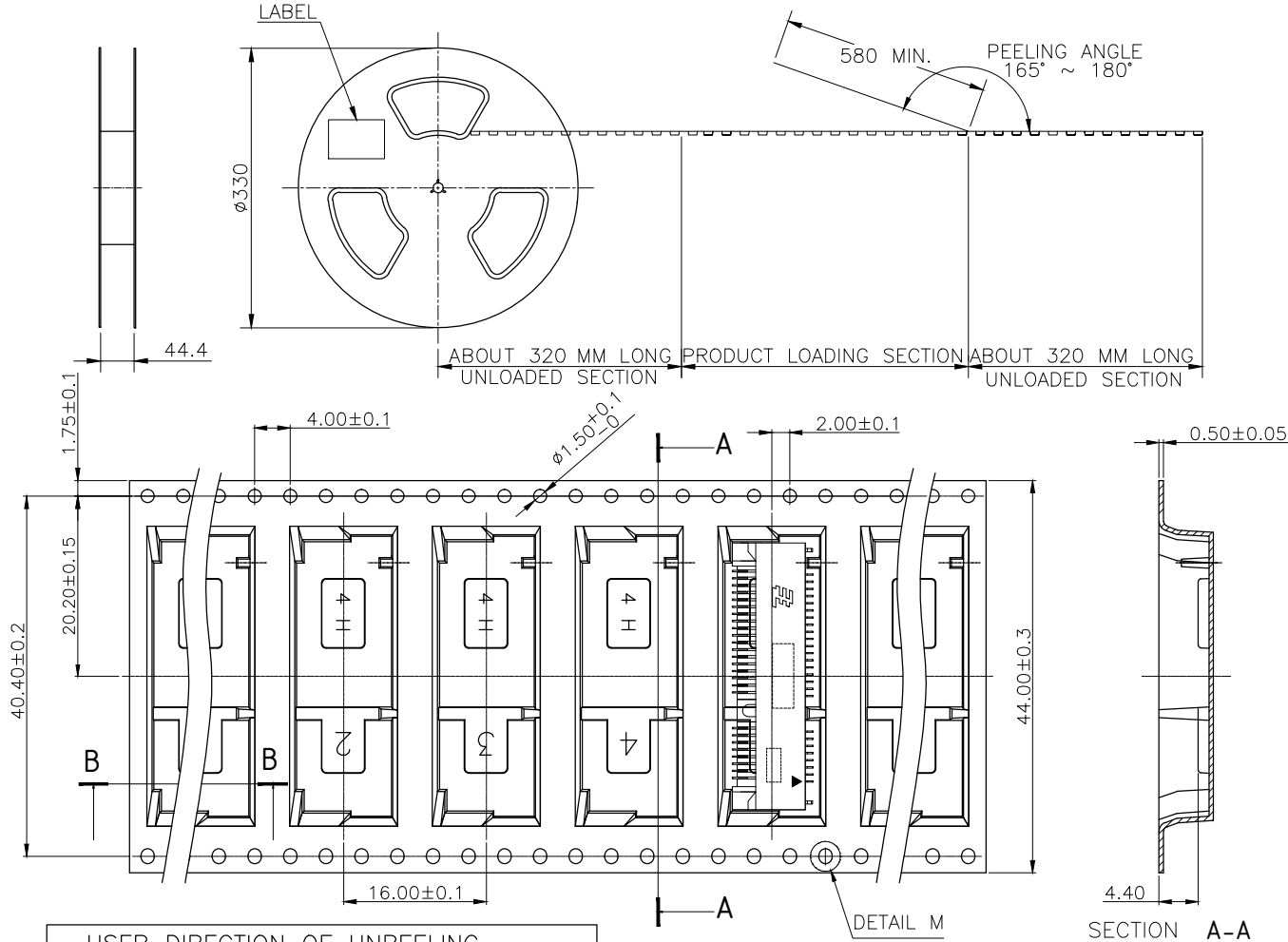
COMPONENT KEEP OUT AREA FOR CONNECTOR



| | | | | | |
|--|--|-------------------|-----------|---|-----------------|
| THIS DRAWING IS A CONTROLLED DOCUMENT. | | DWN A. WU | 25SEP2009 | | TE Connectivity |
| DIMENSIONS: MM | | CHK S. CHIEN | 25SEP2009 | | NAME |
| TOLERANCES UNLESS OTHERWISE SPECIFIED: | | APVD W. KODAMA | 25SEP2009 | PRODUCT SPEC | |
| 0 PLC ± | | APPLICATION SPEC | | 2 IN 1 mSATA & PCI EXPRESS MINI CARD CONNECTOR, 4 MM HEIGHT | |
| 1 PLC ±0.3 | | WEIGHT | | SIZE | CAGE CODE |
| 2 PLC ±0.2 | | CUSTOMER DRAWING | | A2 | 00779 |
| 3 PLC ± | | SCALE | | C= | 1775861 |
| 4 PLC ± | | SHEET | | 3 | of 4 |
| ANGLES ±° | | REV | | F1 | |

THIS DRAWING IS UNPUBLISHED.
 RELEASED FOR PUBLICATION
 © COPYRIGHT 2011 BY TE CONNECTIVITY. ALL RIGHTS RESERVED.

| LOC | DIST | REVISIONS | | | |
|-----|------|-------------|------|-----|------|
| P | LTR | DESCRIPTION | DATE | DWN | APVD |
| DW | - | SEE SHEET 1 | | | |



| | | | | | |
|--|--|------------------|-----|---|-----------|
| THIS DRAWING IS A CONTROLLED DOCUMENT. | | DWN | --- | TE Connectivity | |
| DIMENSIONS: MM | | CHK | --- | NAME | |
| TOLERANCES UNLESS OTHERWISE SPECIFIED: | | APVD | --- | 2 IN 1 mSATA & PCI EXPRESS MINI CARD CONNECTOR, 4.0 MM HEIGHT | |
| 0 PLC \pm | | PRODUCT SPEC | --- | SIZE | CAGE CODE |
| 1 PLC \pm | | APPLICATION SPEC | --- | A2 | 00779 |
| 2 PLC \pm | | WEIGHT | --- | DRAWING NO | C=1775861 |
| 3 PLC \pm | | | | RESTRICTED TO | --- |
| 4 PLC \pm | | | | SCALE | --- |
| ANGLES \pm | | | | SHEET | 4 of 4 |
| FINISH | | | | REV | F1 |

| | | | | |
|----------|----------|-----------|---------|---------|
| 3900 PCS | 650 | 6 | 9.5 | 4.618 |
| QUANTITY | PCS/TAPE | REELS/BOX | G/W(Kg) | N/W(Kg) |